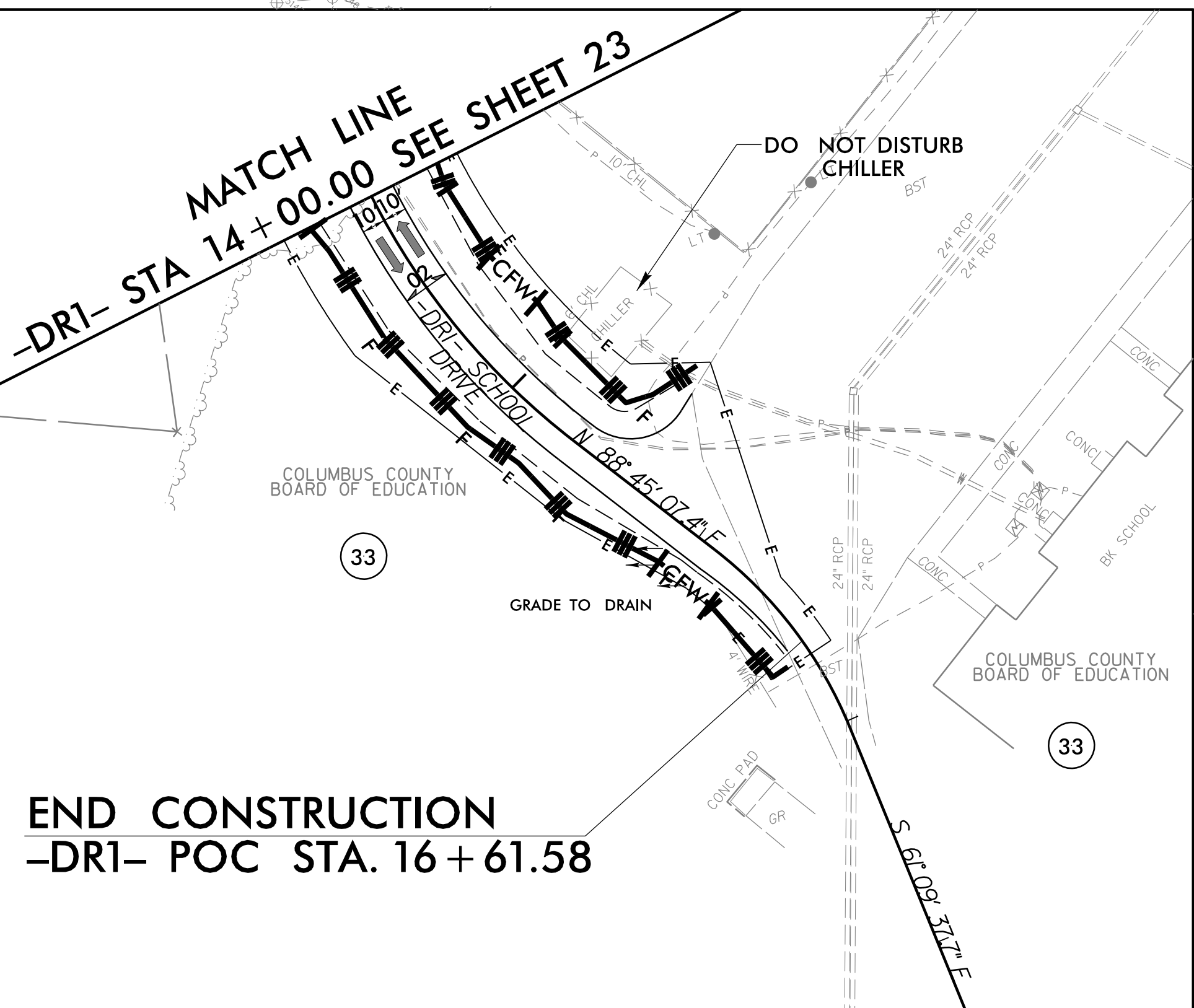
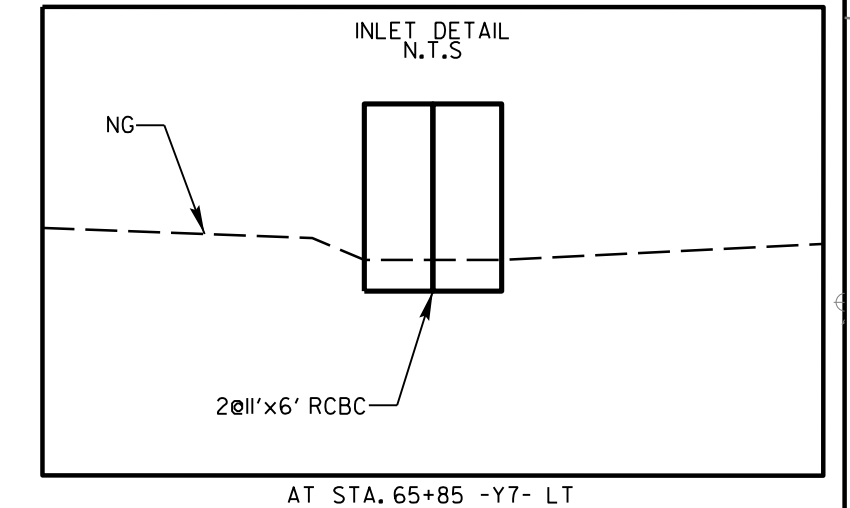
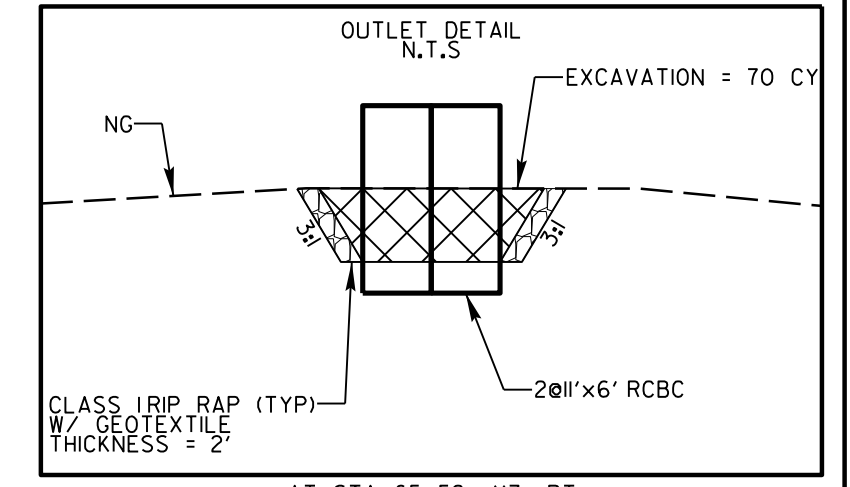
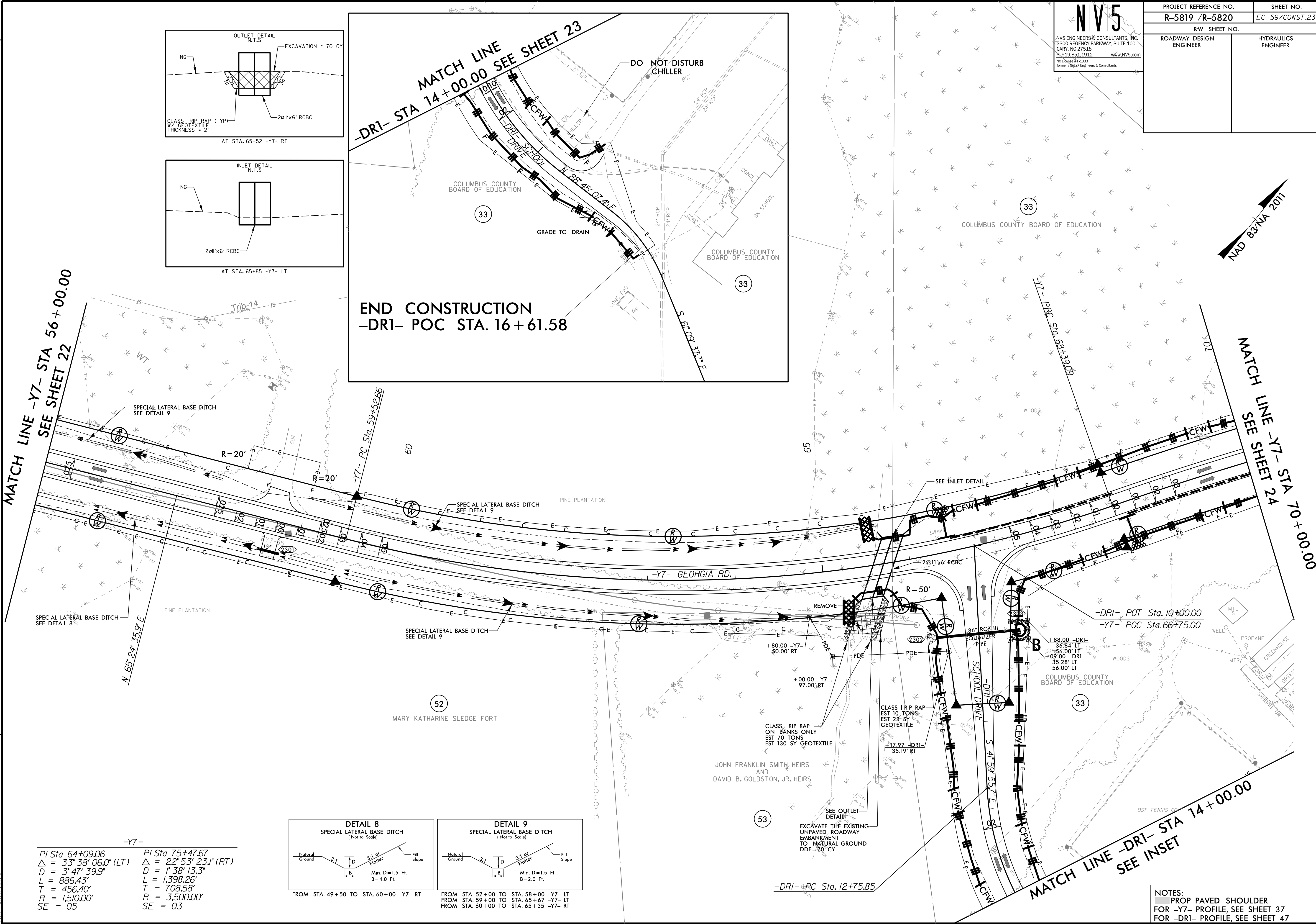


PROJECT REFERENCE NO.	SHEET NO.
R-5819 /R-5820	EC-59/CONST.23
RW SHEET NO.	
ROADWAY DESIGN ENGINEER	HYDRAULICS ENGINEER

REVISIONS
 ROW REVISION - 12/30/2021 - UPDATED PARCEL OWNER NAME ON PARCEL 53. ADD -DRI-

8/17/99

3/14/2022
 R5819_R5820_REU_EC_PSH23_FINAL.dgn
 T:\Projects\19111

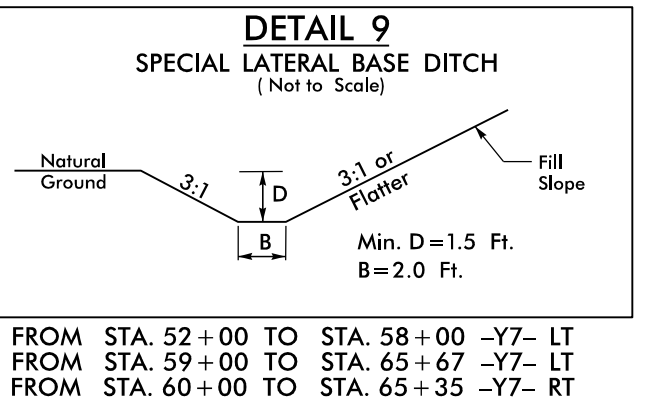
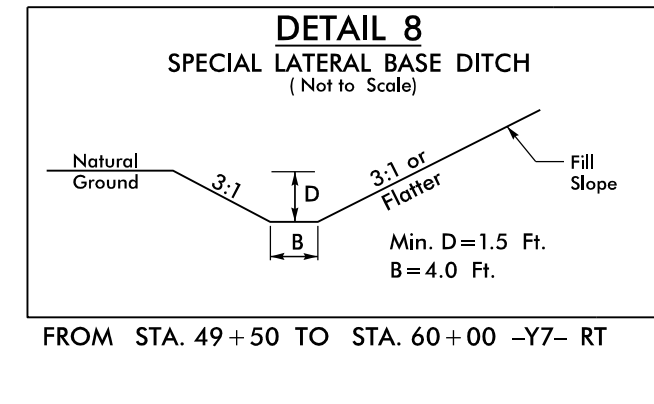


MATCH LINE -Y7- STA 56+00.00
 SEE SHEET 22

MATCH LINE -Y7- STA 70+00.00
 SEE SHEET 2A

END CONSTRUCTION
 -DRI- POC STA. 16+61.58

-Y7-	
PI Sta 64+09.06	PI Sta 75+47.67
$\Delta = 33^{\circ} 38' 06.0''$ (LT)	$\Delta = 22^{\circ} 53' 23.1''$ (RT)
D = 3' 47' 39.9"	D = 1' 38' 13.3"
L = 886.43'	L = 1,398.26'
T = 456.40'	T = 708.58'
R = 1,510.00'	R = 3,500.00'
SE = 05	SE = 03



NOTES:
 PROP PAVED SHOULDER FOR -Y7- PROFILE, SEE SHEET 37
 FOR -DRI- PROFILE, SEE SHEET 47