

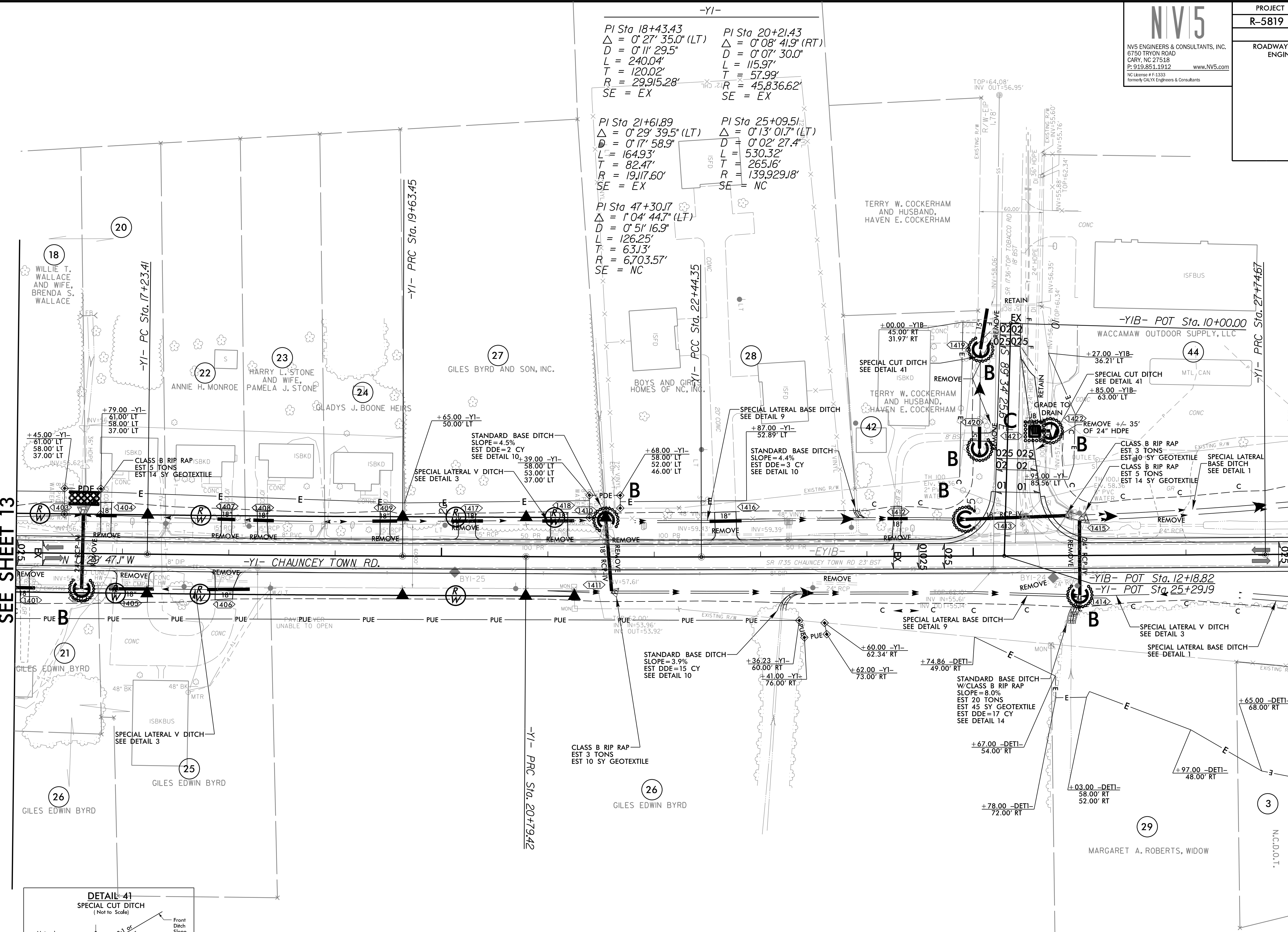
**REVISIONS**

ROW REVISION - 7/26/2021 - COMBINED PARCELS 18 AND 19 INTO 18. MOVED PROPOSED DRIVEWAY TO EXISTING DRIVEWAY LOCATION ON PARCEL 28. ADDED TWO DRIVEWAYS TO PARCEL 27. ADDED 18" DRIVEWAY PIPE TO PARCEL 27. ADDED TWO 18" DRIVEWAY PIPES TO PARCEL 28. ADDED TEMPORARY CONSTRUCTION EASEMENT TO PARCELS 42 AND 44.

3/15/2022  
 R5819\_R5820\_REU\_EC\_PSH14\_FINAL.dgn  
 TSE/ELC/MLT

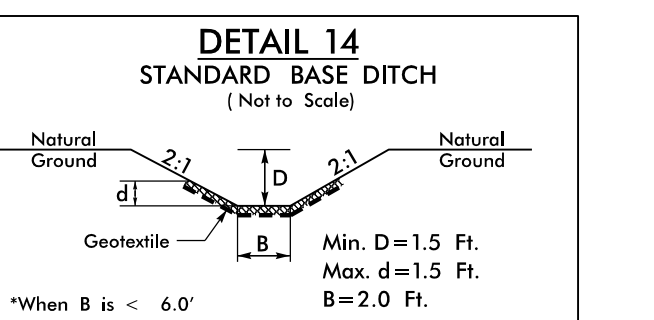
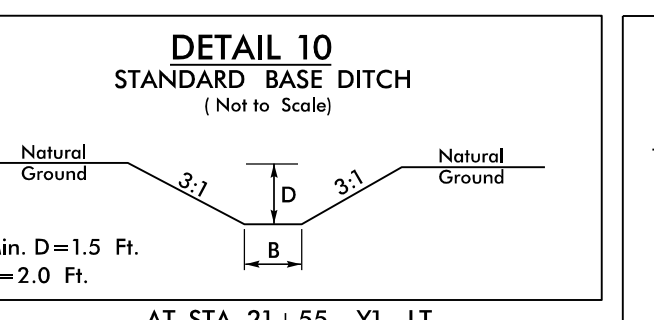
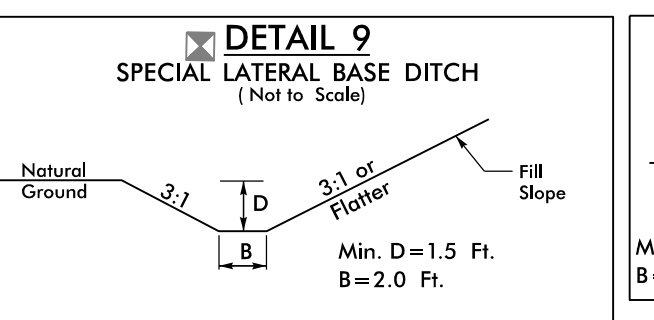
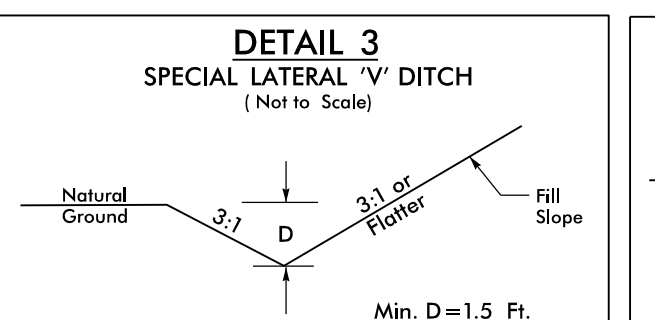
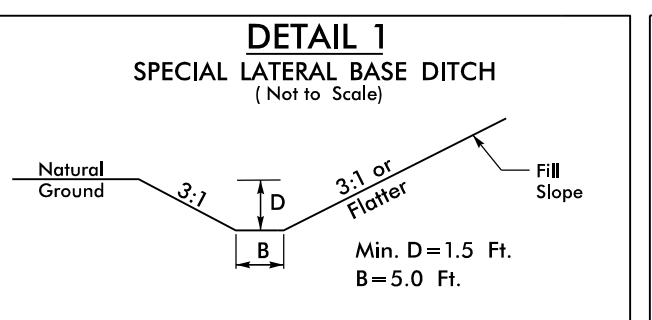
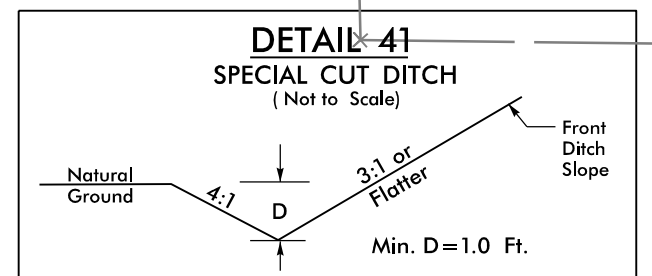
MATCHLINE -Y1- STA. 16 + 00.00  
 SEE SHEET 13

MATCHLINE -Y1- STA. 28 + 00.00  
 SEE SHEET 6



-Y1-

PI Sta 18+43.43 Δ = 0° 27' 35.0" (LT) D = 0' 11' 29.5" L = 240.04' T = 120.02' R = 29,915.28' SE = EX	PI Sta 20+21.43 Δ = 0° 08' 41.9" (RT) D = 0' 07' 30.0" L = 115.97' T = 57.99' R = 45,836.62' SE = EX
PI Sta 21+61.89 Δ = 0° 29' 39.5" (LT) D = 0' 17' 58.9" L = 164.93' T = 82.47' R = 19,117.60' SE = EX	PI Sta 25+09.51 Δ = 0° 13' 01.7" (LT) D = 0' 02' 27.4" L = 530.32' T = 265.16' R = 139,929.18' SE = NC
PI Sta 47+30.17 Δ = 1° 04' 44.7" (LT) D = 0' 51' 16.9" L = 126.25' T = 63.13' R = 6,703.57' SE = NC	



**NOTES:**  
 ALL DRIVEWAY RADII ARE 5' UNLESS OTHERWISE NOTED  
 PROP PAVED SHOULDER  
 FOR -Y1- PROFILE, SEE SHEET 31 & 32