

8/17/99

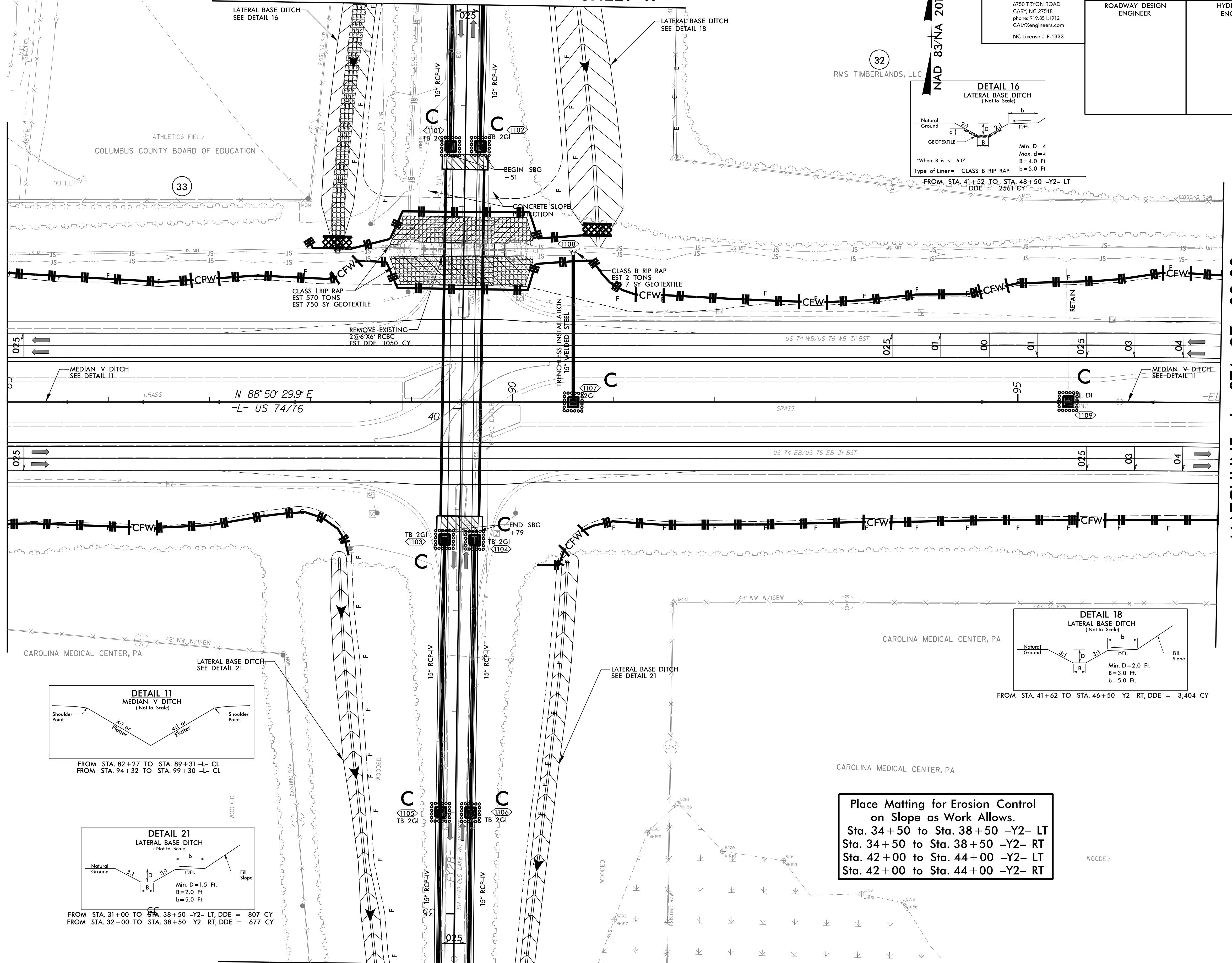
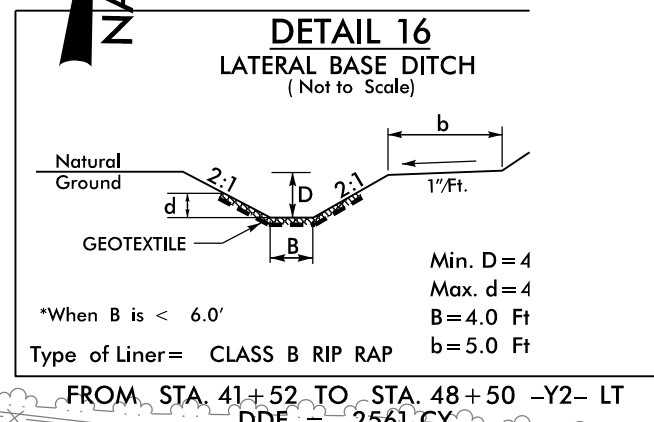
CALYX
ENGINEERS + CONSULTANTS
6750 TRYON ROAD
CARY, NC 27518
PHONE: 919.851.1912
CALYXengineers.com
NC License # F-1333

PROJECT REFERENCE NO. R-5819 /R-5820	SHEET NO. EC-47/CONST.II
R/W SHEET NO.	
ROADWAY DESIGN ENGINEER	HYDRAULICS ENGINEER

UTILIZE FABRIC INSERT INLET PROTECTION DEVICES IN LIEU OF ROCK INLET SEDIMENT TRAPS, TYPE - C AS DIRECTED TO AVOID IMPOUNDMENT OF RUNOFF IN ROADWAY OPEN TO TRAFFIC

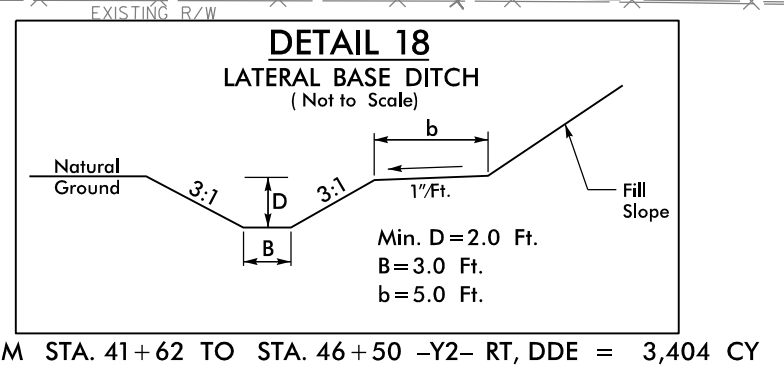
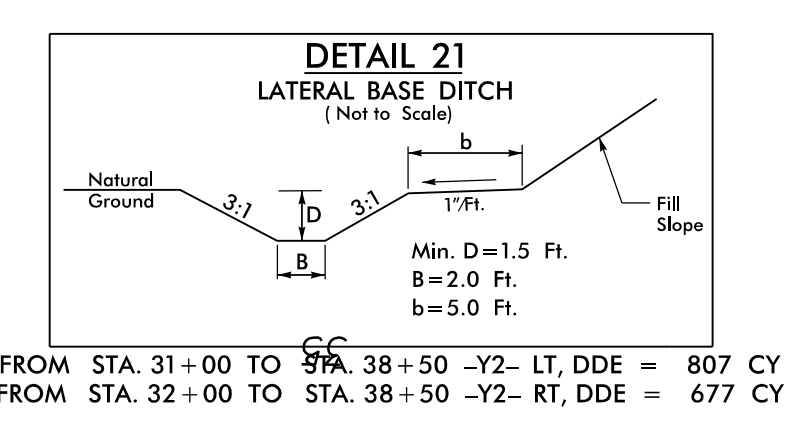
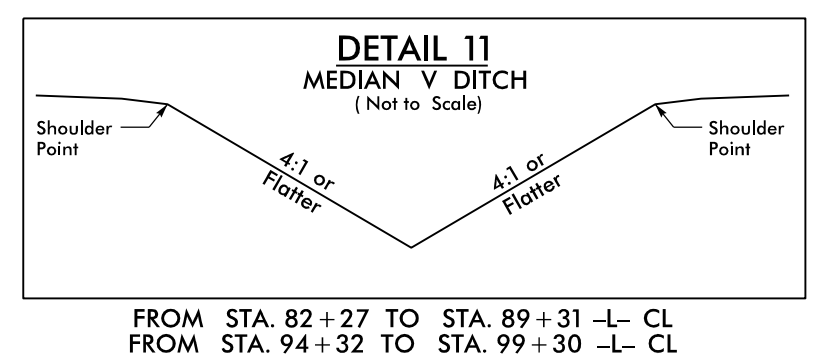
MATCHLINE -Y2- STA. 44 + 00.00 SEE SHEET 17

(32)
RMS TIMBERLANDS, LLC
NAD 83/NA 2011



MATCHLINE -L- STA. 85 + 00.00 SEE SHEET 10

MATCHLINE -L- STA. 97 + 00.00 SEE SHEET 12



Place Matting for Erosion Control on Slope as Work Allows.
Sta. 34+50 to Sta. 38+50 -Y2- LT
Sta. 34+50 to Sta. 38+50 -Y2- RT
Sta. 42+00 to Sta. 44+00 -Y2- LT
Sta. 42+00 to Sta. 44+00 -Y2- RT

NOTES:
 PROP PAVED SHOULDER
 FOR -L- PROFILE, SEE SHEET 30 & 31
 FOR -Y2- PROFILE, SEE SHEET 33

MATCHLINE -Y2- STA. 34 + 50.00 SEE SHEET 16

REVISIONS

3/14/2022
R5819_R5820_REU_EC_PSH11_FINAL.dgn
R5819.dwg