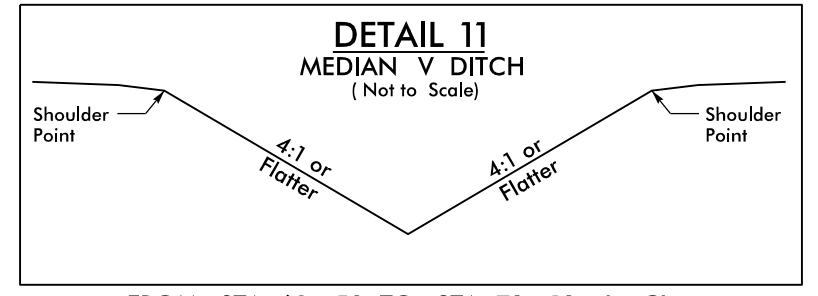


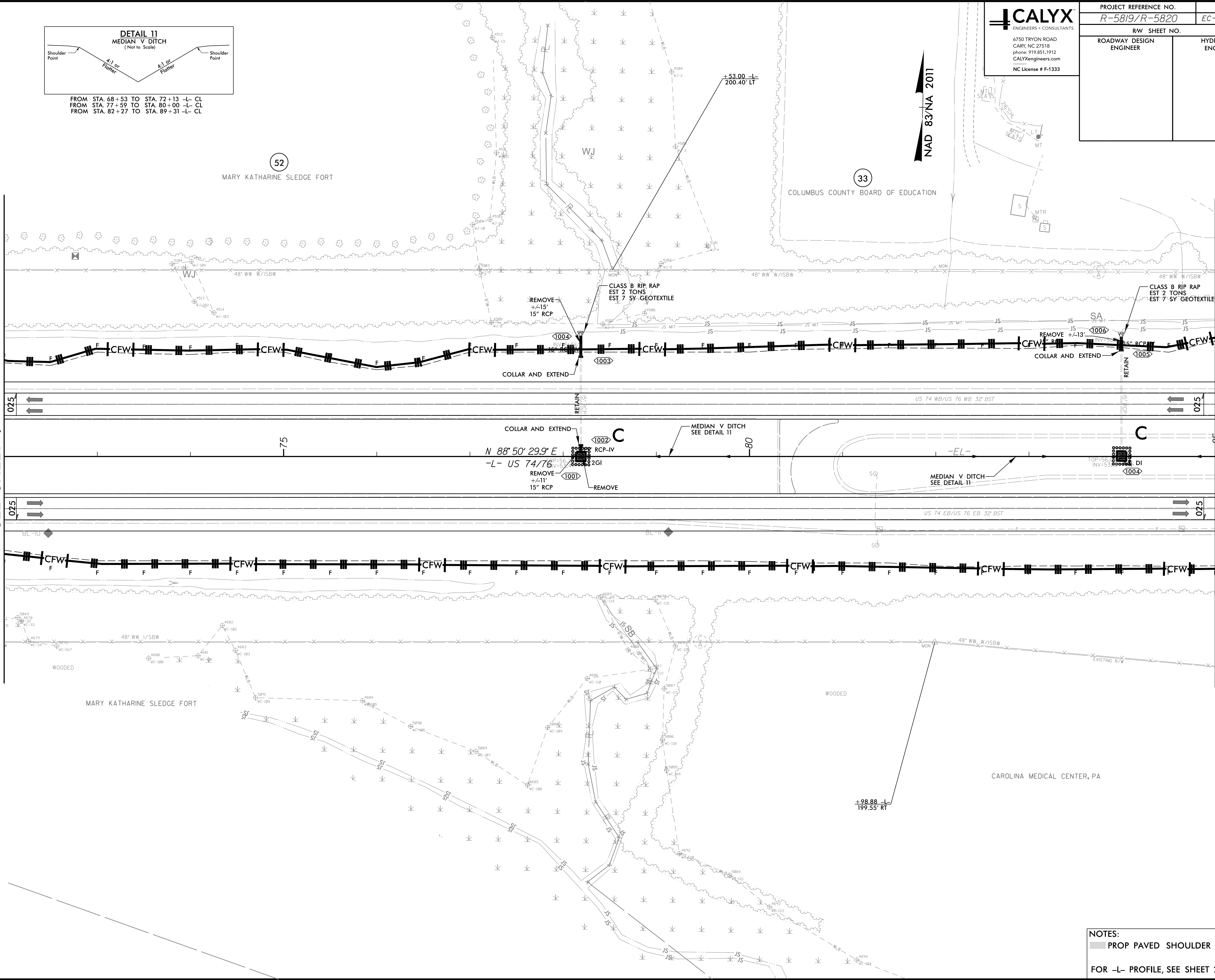
8/17/99

CALYX
ENGINEERS + CONSULTANTS
6750 TRYON ROAD
CARY, NC 27518
PHONE: 919.851.1912
CALYXengineers.com
NC License # F-1333

PROJECT REFERENCE NO. <i>R-5819/R-5820</i>	SHEET NO. <i>EC-46/CONST-10</i>
R/W SHEET NO.	
ROADWAY DESIGN ENGINEER	HYDRAULICS ENGINEER



FROM STA. 68+53 TO STA. 72+13 -L- CL
FROM STA. 77+59 TO STA. 80+00 -L- CL
FROM STA. 82+27 TO STA. 89+31 -L- CL



MATCHLINE -L- STA. 72 + 00.00
SEE SHEET 9

MATCHLINE -L- STA. 85 + 00.00
SEE SHEET 11

REVISIONS

3/14/2022
R5819_R5820_REU_EC_PSH10_FINAL.dgn
US:R5819

NOTES:
 PROP PAVED SHOULDER
 FOR -L- PROFILE, SEE SHEET 22