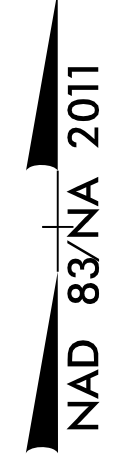
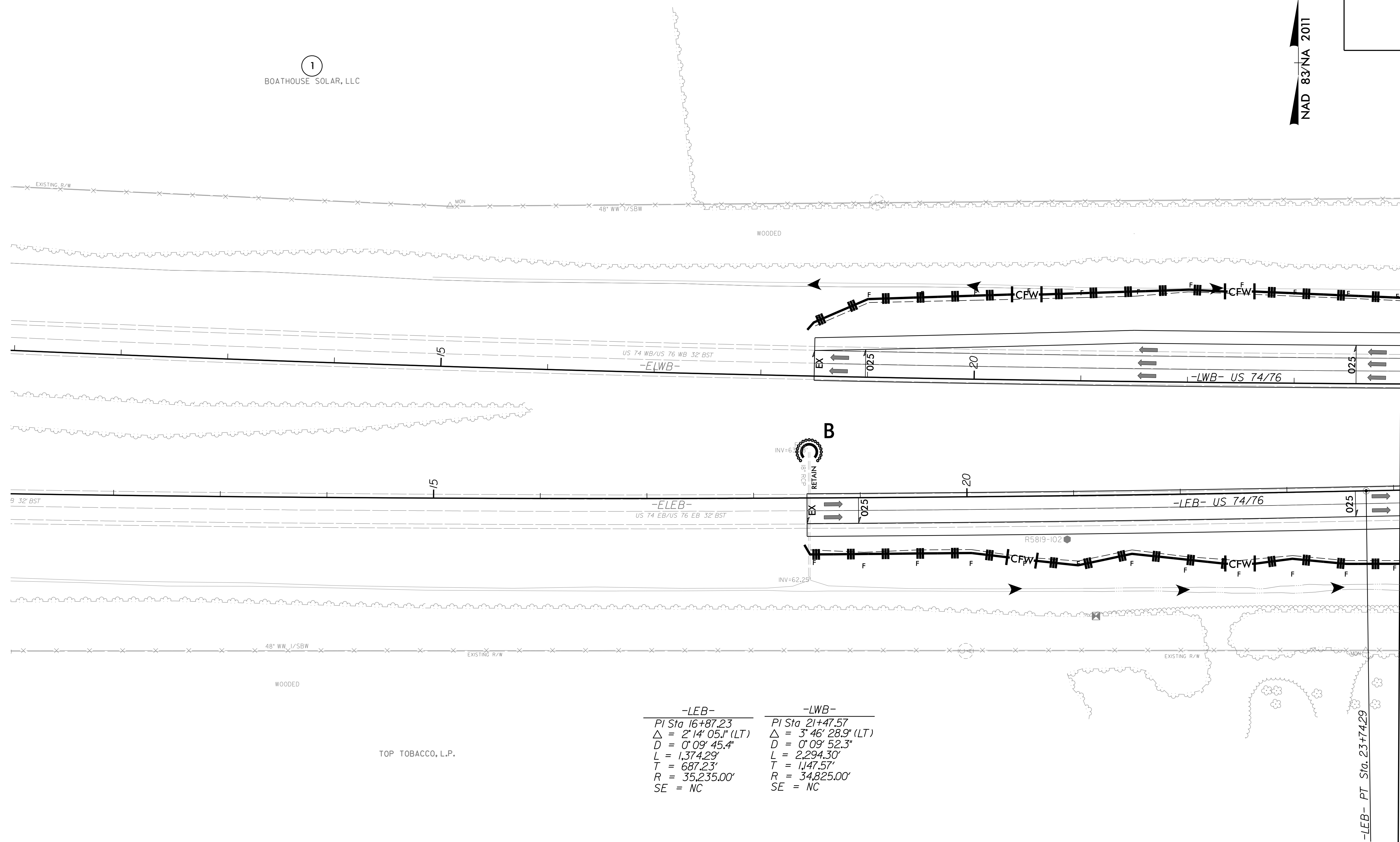


PROJECT REFERENCE NO. <i>R-5819/R-5820</i>	SHEET NO. <i>EC-40/CONST.04</i>
RW SHEET NO.	
ROADWAY DESIGN ENGINEER	HYDRAULICS ENGINEER



8/17/99

1
BOATHOUSE SOLAR, LLC



-LEB-	-LWB-
PI Sta 16+87.23	PI Sta 21+47.57
$\Delta = 2' 14' 05.1''$ (LT)	$\Delta = 3' 46' 28.9''$ (LT)
D = 0' 09' 45.4"	D = 0' 09' 52.3"
L = 1,374.29'	L = 2,294.30'
T = 687.23'	T = 1,147.57'
R = 35,235.00'	R = 34,825.00'
SE = NC	SE = NC

MATCHLINE -LWB- STA. 24 + 00.00
SEE SHEET 5

-LEB- PT Sta. 23+74.29

REVISIONS

3/14/2022
R5819-R5820-REU-EC-FSH4_FINAL.dgn
US:R5819-102

NOTES:
 ■ PROP PAVED SHOULDER
 FOR -LEB- PROFILE, SEE SHEET 18
 FOR -LWB- PROFILE, SEE SHEET 19