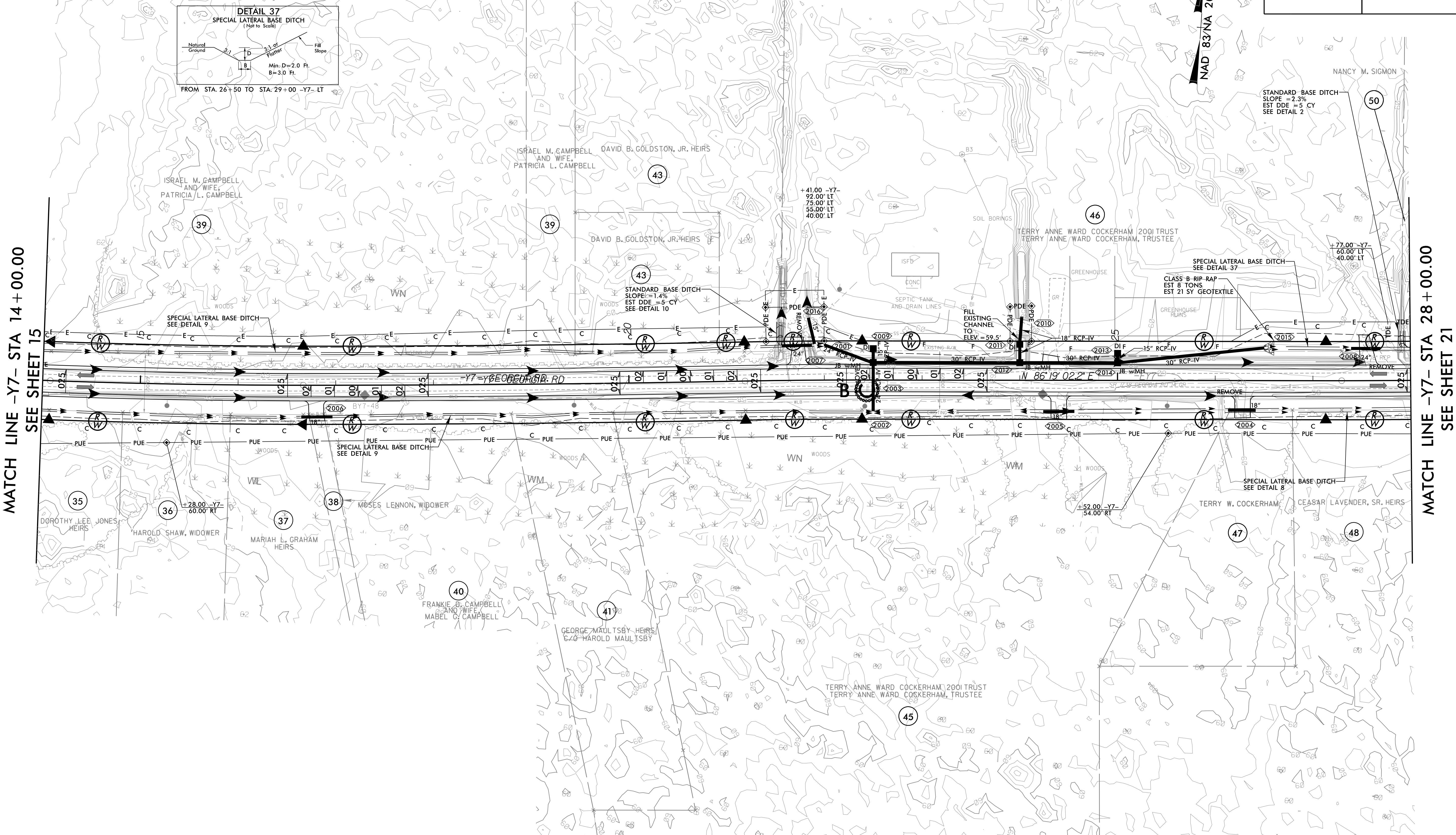
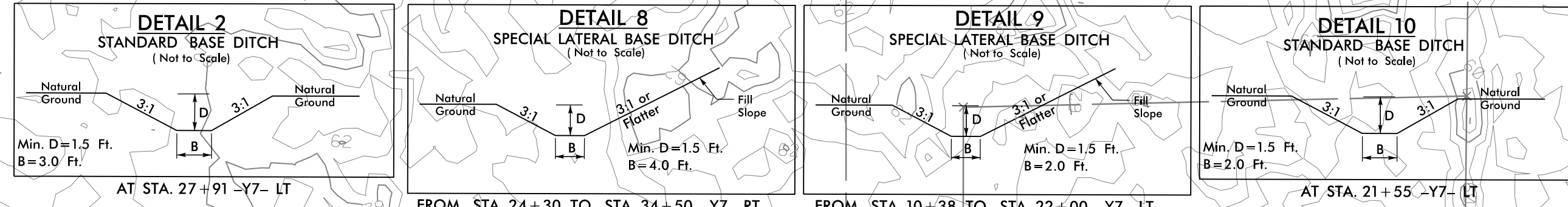


PROJECT REFERENCE NO. R-5819 /R-5820	SHEET NO. EC-34/CONST.20
RW SHEET NO.	
ROADWAY DESIGN ENGINEER	HYDRAULICS ENGINEER

NVS
 NVS ENGINEERS & CONSULTANTS, INC.
 6750 TRYON ROAD
 CARY, NC 27518
 P. 919.851.1912
 www.NVS.com
 No. License # PL333
 Formerly CALYX Engineers & Consultants

**CLEARING AND GRUBBING
 EROSION CONTROL FOR
 CONSTRUCTION SHEET 20**



REVISIONS
 ROW REVISION - 7/26/2021 - COMBINED PARCELS 39 AND 42 INTO 39, COMBINED PARCELS 43 AND 44 INTO 43.
 ROW REVISION - 10/22/2021 - UPDATED PARCEL OWNER NAME ON PARCEL 38, ADDED DRIVEWAY AND 18" DRIVE PIPE ON PARCELS 45 AND 47.

4/8/2022
 T:\Projects\19_R5819_R5820_REU_EC_PSH20.CG.dgn
 JSE:frank

NOTES:
 PROP PAVED SHOULDER
 ALL DRIVEWAY RADII ARE 5' UNLESS OTHERWISE NOTED
 FOR -Y7- PROFILE, SEE SHEET 35 & 36