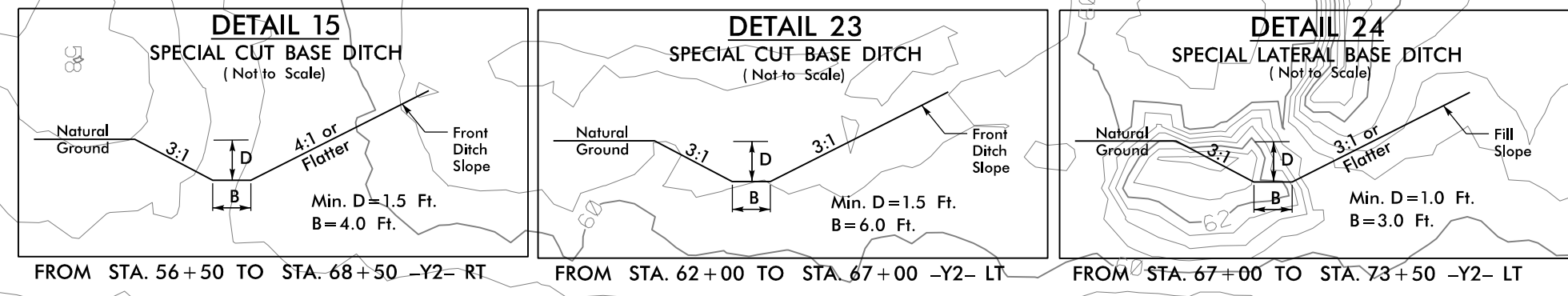


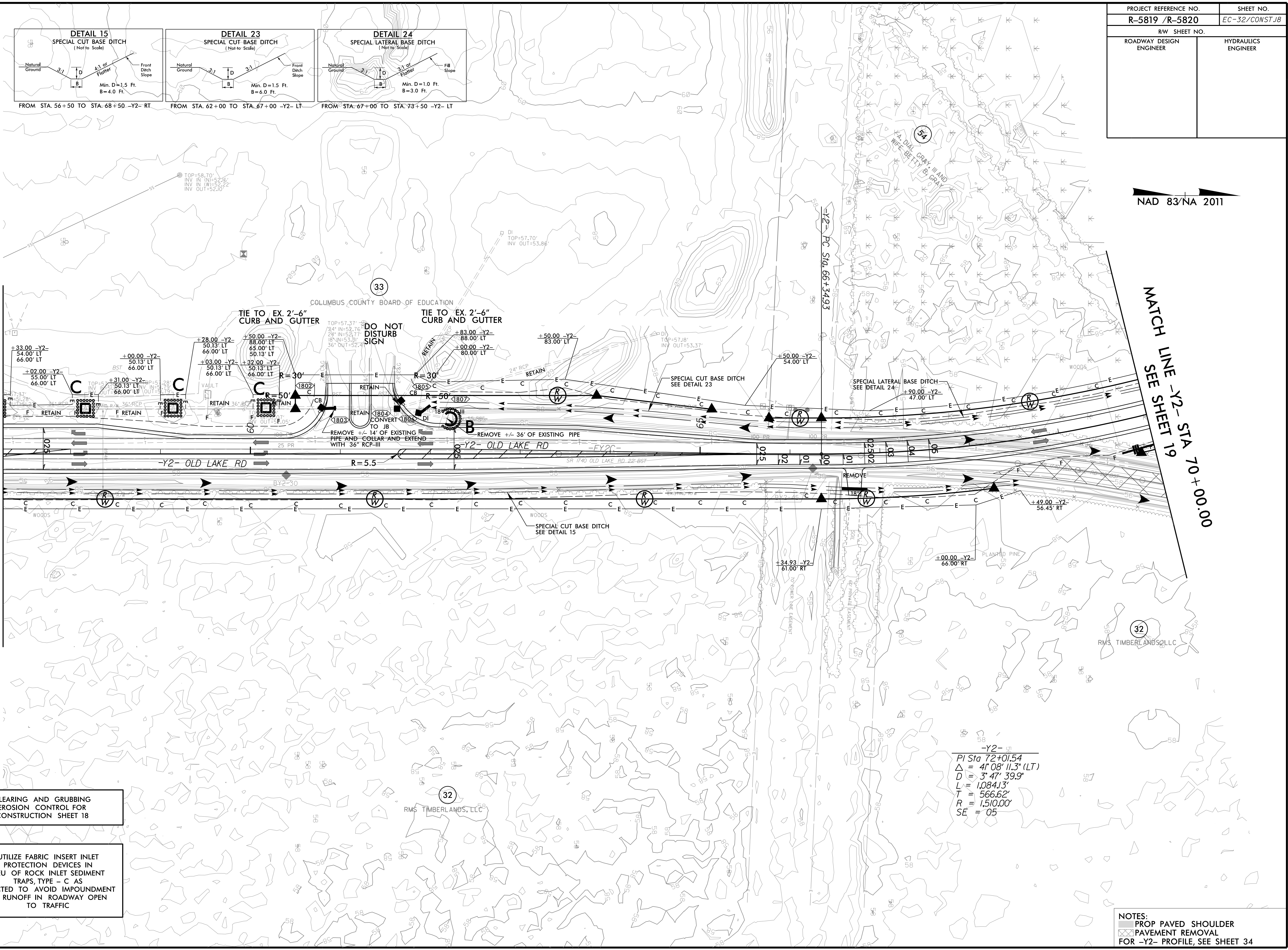
PROJECT REFERENCE NO. R-5819 /R-5820	SHEET NO. EC-32/CONST JB
RW SHEET NO.	
ROADWAY DESIGN ENGINEER	HYDRAULICS ENGINEER



NAD 83/NA 2011

MATCH LINE -Y2- STA 57 +25.00
SEE SHEET 17

MATCH LINE -Y2- STA 70 +00.00
SEE SHEET 19



CLEARING AND GRUBBING
EROSION CONTROL FOR
CONSTRUCTION SHEET 18

UTILIZE FABRIC INSERT INLET
PROTECTION DEVICES IN
LIEU OF ROCK INLET SEDIMENT
TRAPS, TYPE - C AS
DIRECTED TO AVOID IMPONDMENT
OF RUNOFF IN ROADWAY OPEN
TO TRAFFIC

-Y2-
PI Sta 72+01.54
Δ = 41' 08" 11.3' (LT)
D = 3' 47' 39.9"
L = 1,084.13'
T = 566.62'
R = 1,510.00'
SE = '05

NOTES:
PROP PAVED SHOULDER
PAVEMENT REMOVAL
FOR -Y2- PROFILE, SEE SHEET 34

REVISIONS

8/17/99

3/14/2022
R5819_R5820_REU_EC_PSH18.CG.dgn
15:58:11