

CLEARING AND GRUBBING
EROSION CONTROL FOR
CONSTRUCTION SHEET 14

NV5
NV5 ENGINEERS & CONSULTANTS, INC.
6750 TRYON ROAD
CARY, NC 27518
P: 919.851.1912 www.NV5.com
NC License # F-1333
Formerly DALY, Engineers & Consultants

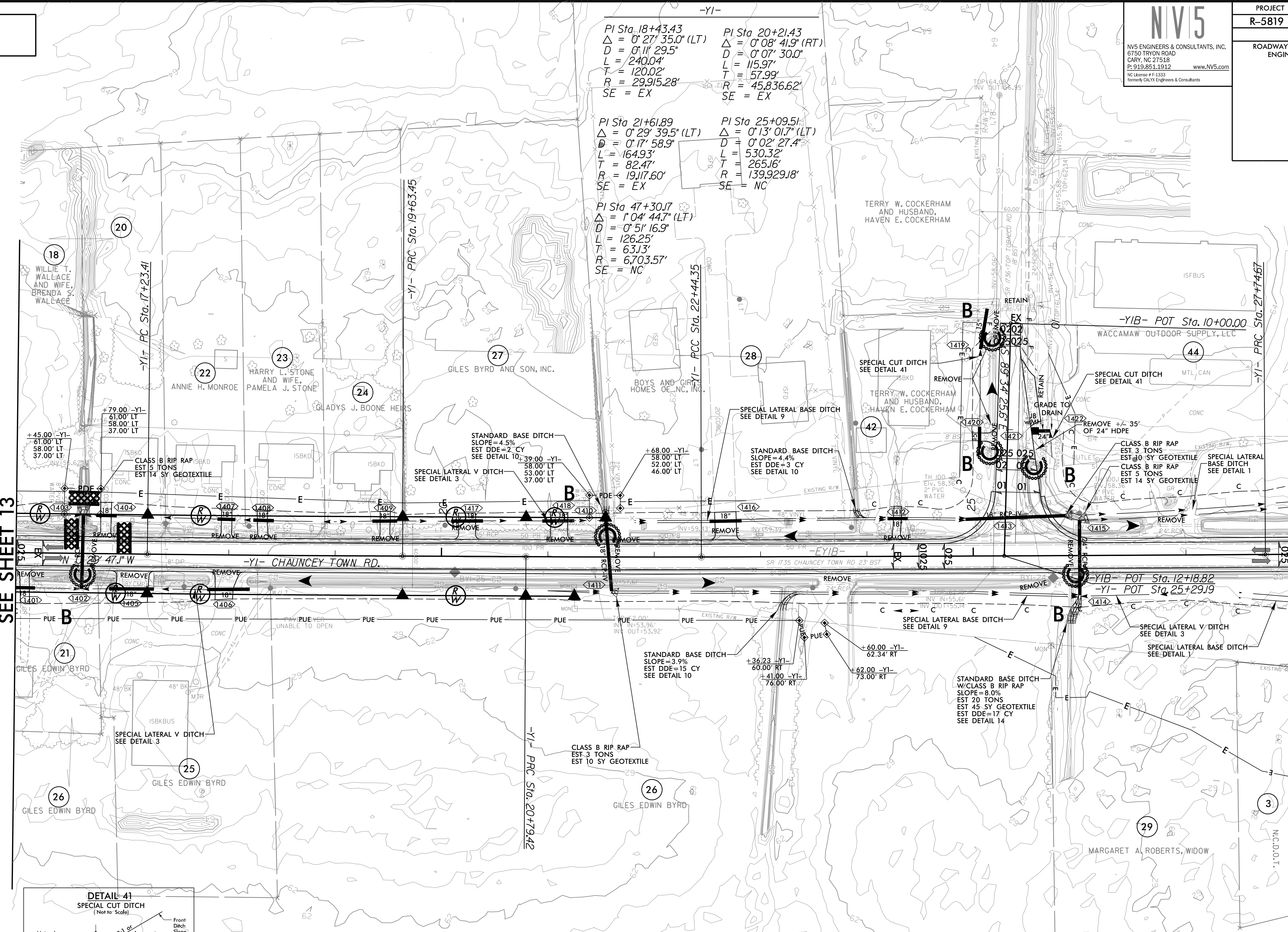
PROJECT REFERENCE NO. R-5819 /R-5820	SHEET NO. EC-28/CONST.14
R/W SHEET NO.	
ROADWAY DESIGN ENGINEER	HYDRAULICS ENGINEER

NAD 83/NA 2011

REVISIONS
ROW REVISION - 7/26/2021 - COMBINED PARCELS 18 AND 19 INTO 18. MOVED PROPOSED DRIVEWAY TO EXISTING DRIVEWAY LOCATION ON PARCEL 28.
ADDED TWO DRIVEWAYS TO PARCEL 27. ADDED 18" DRIVEWAY PIPE TO PARCEL 27. ADDED TWO 18" DRIVEWAY PIPES TO PARCEL 28.
ROW REVISION - 10/22/2021 - ADDED PARCEL 42 AND 44. ADDED TEMPORARY CONSTRUCTION EASEMENT TO PARCELS 42 AND 44.

MATCHLINE -Y1- STA. 16+00.00
SEE SHEET 13

MATCHLINE -Y1- STA. 28+00.00
SEE SHEET 6



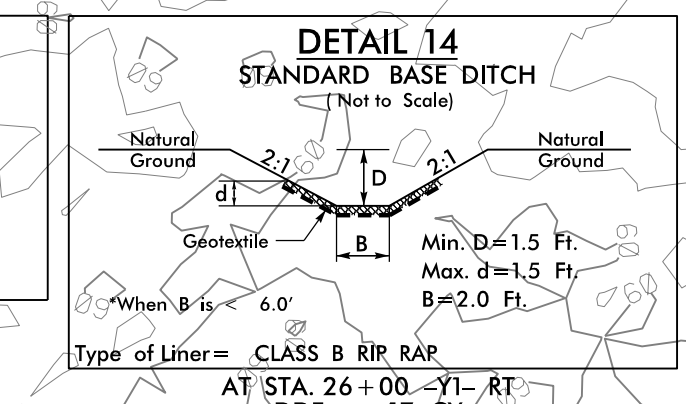
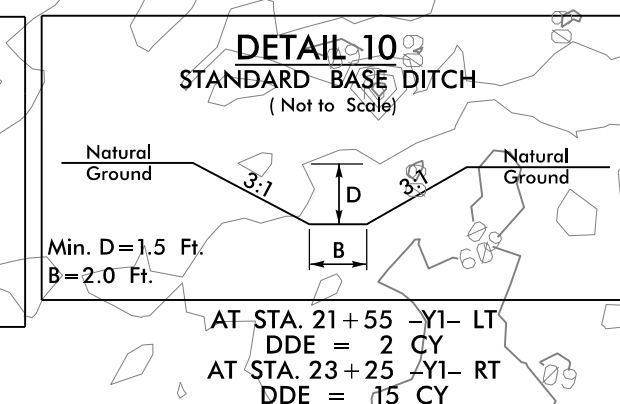
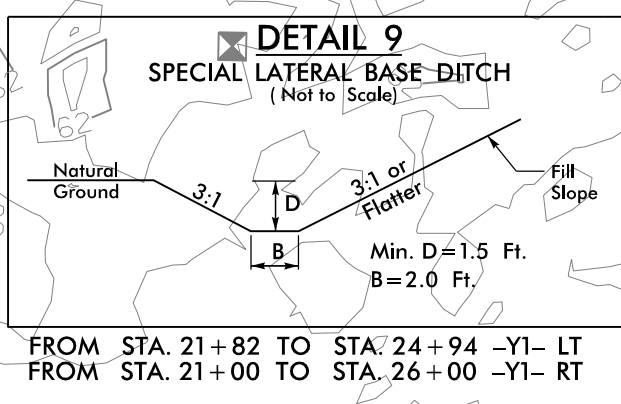
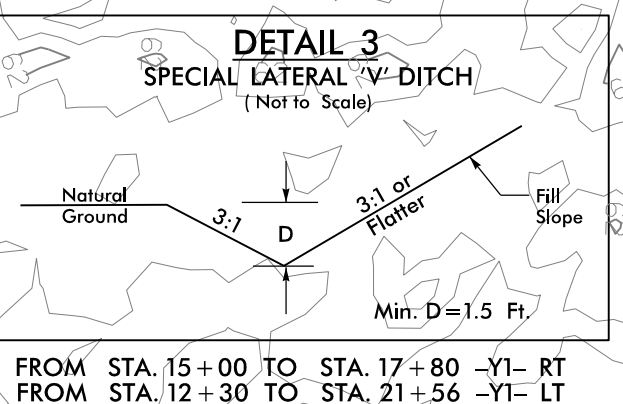
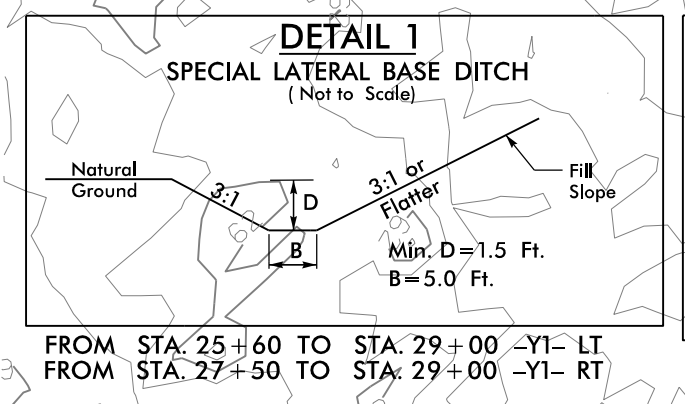
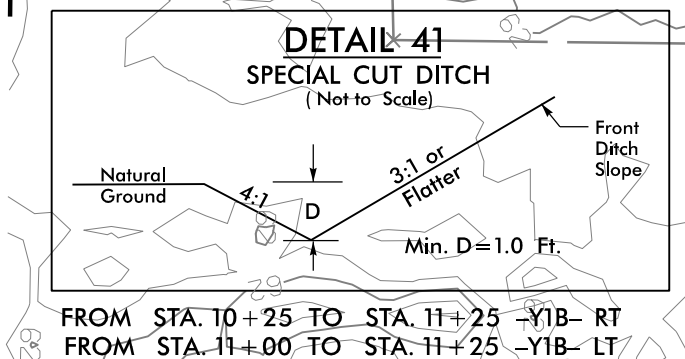
PI Sta. 18+43.43
 $\Delta = 0^\circ 27' 35.0''$ (LT)
 $D = 0' 11' 29.5''$
 $L = 240.04'$
 $T = 120.02'$
 $R = 29,915.28'$
SE = EX

PI Sta. 20+21.43
 $\Delta = 0^\circ 08' 41.9''$ (RT)
 $D = 0' 07' 30.0''$
 $L = 115.97'$
 $T = 57.99'$
 $R = 45,836.62'$
SE = EX

PI Sta. 21+61.89
 $\Delta = 0^\circ 29' 39.5''$ (LT)
 $D = 0' 17' 58.9''$
 $L = 164.93'$
 $T = 82.47'$
 $R = 19,117.60'$
SE = EX

PI Sta. 25+09.51
 $\Delta = 0^\circ 13' 01.7''$ (LT)
 $D = 0' 02' 27.4''$
 $L = 530.32'$
 $T = 265.16'$
 $R = 139,929.18'$
SE = NC

PI Sta. 47+30.17
 $\Delta = 1^\circ 04' 44.7''$ (LT)
 $D = 0' 51' 16.9''$
 $L = 126.25'$
 $T = 63.13'$
 $R = 6,703.57'$
SE = NC



NOTES:
ALL DRIVEWAY RADII ARE 5' UNLESS OTHERWISE NOTED
PROP PAVED SHOULDER
FOR -Y1- PROFILE, SEE SHEET 31 & 32

3/15/2022
R5819-R5820-REU-EC-FSH14-1CG.dgn
JSE/ELC/MLT