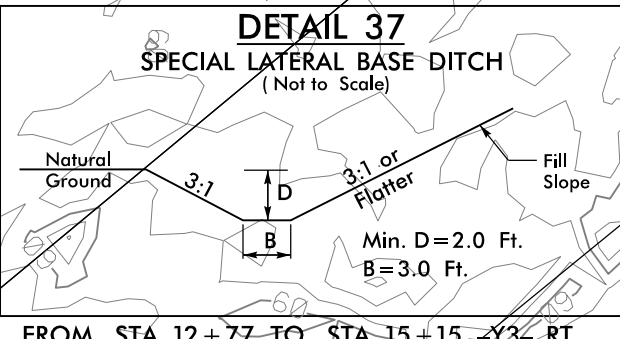
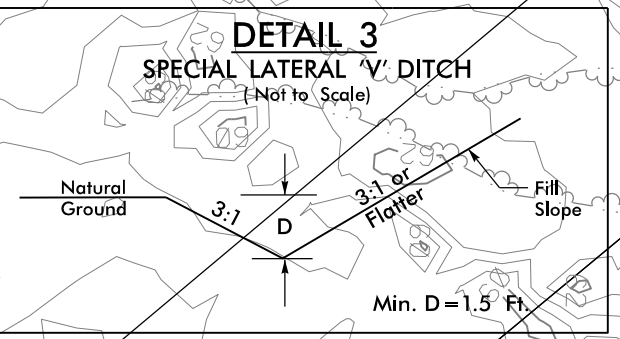
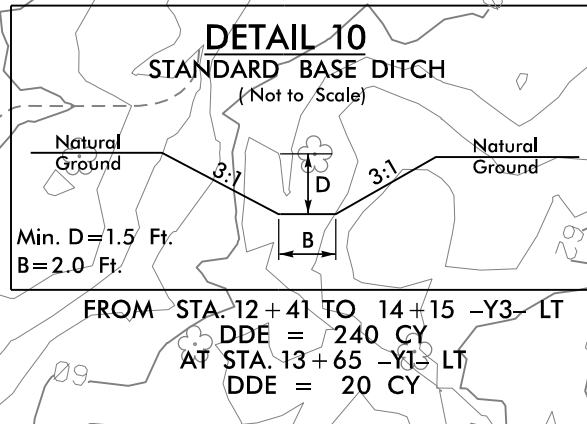


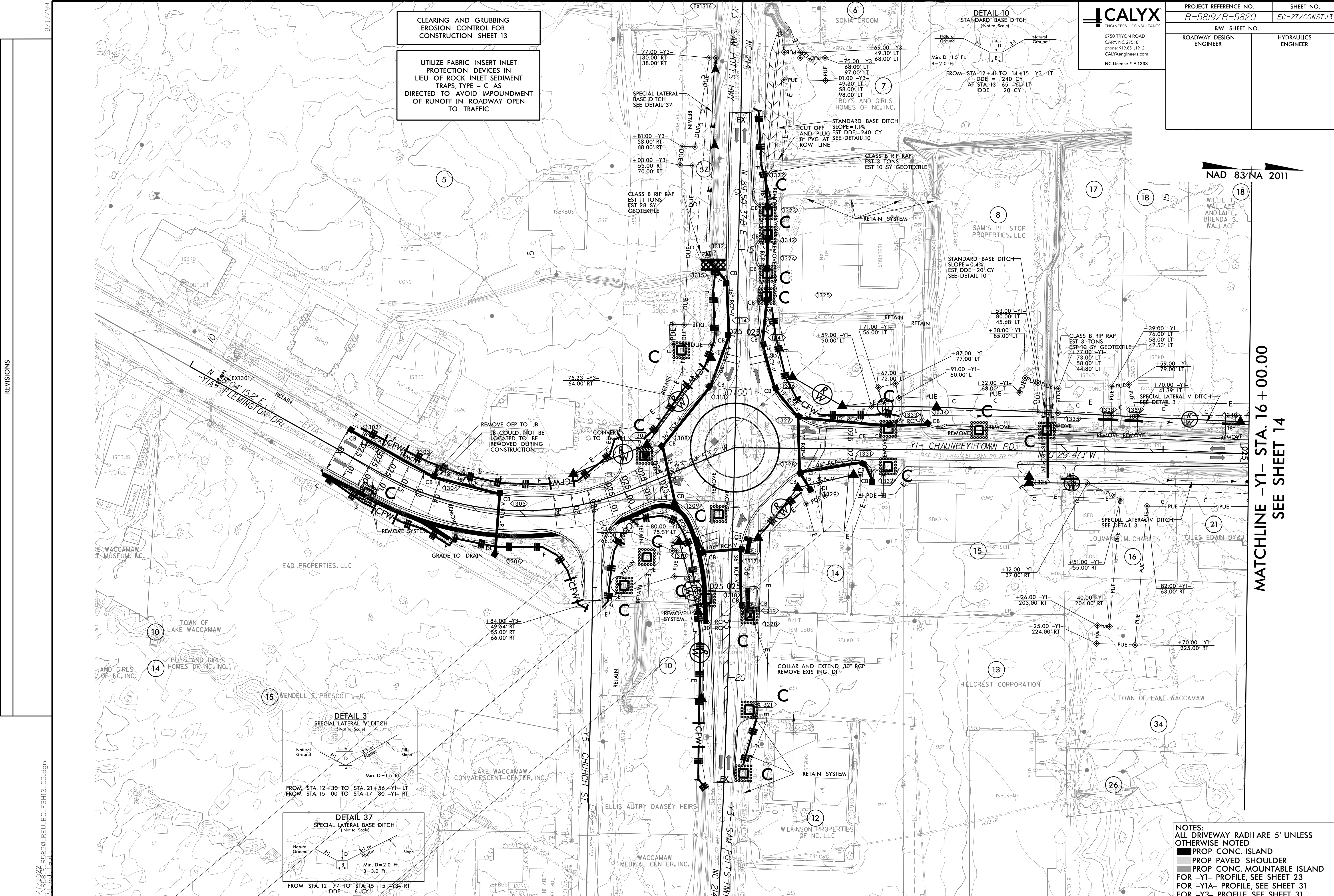
PROJECT REFERENCE NO. R-5819/R-5820	SHEET NO. EC-27/CONST.13
RW SHEET NO.	
ROADWAY DESIGN ENGINEER	HYDRAULICS ENGINEER

CLEARING AND GRUBBING
EROSION CONTROL FOR
CONSTRUCTION SHEET 13

UTILIZE FABRIC INSERT INLET
PROTECTION DEVICES IN
LIEU OF ROCK INLET SEDIMENT
TRAPS, TYPE - C AS
DIRECTED TO AVOID IMPOUNDMENT
OF RUNOFF IN ROADWAY OPEN
TO TRAFFIC



NOTES:
ALL DRIVEWAY RADII ARE 5' UNLESS
OTHERWISE NOTED
■ PROP CONC. ISLAND
■ PROP PAVED SHOULDER
■ PROP CONC. MOUNTABLE ISLAND
FOR -Y1- PROFILE, SEE SHEET 23
FOR -Y1A- PROFILE, SEE SHEET 31
FOR -Y3- PROFILE, SEE SHEET 31



MATCHLINE -Y1- STA. 16 + 00.00
SEE SHEET 14

REVISIONS

8/17/99

4/7/2022
R5819_R5820_REU_EC_PSH13.CG.dgn
13:58:11

NAD 83/NA 2011