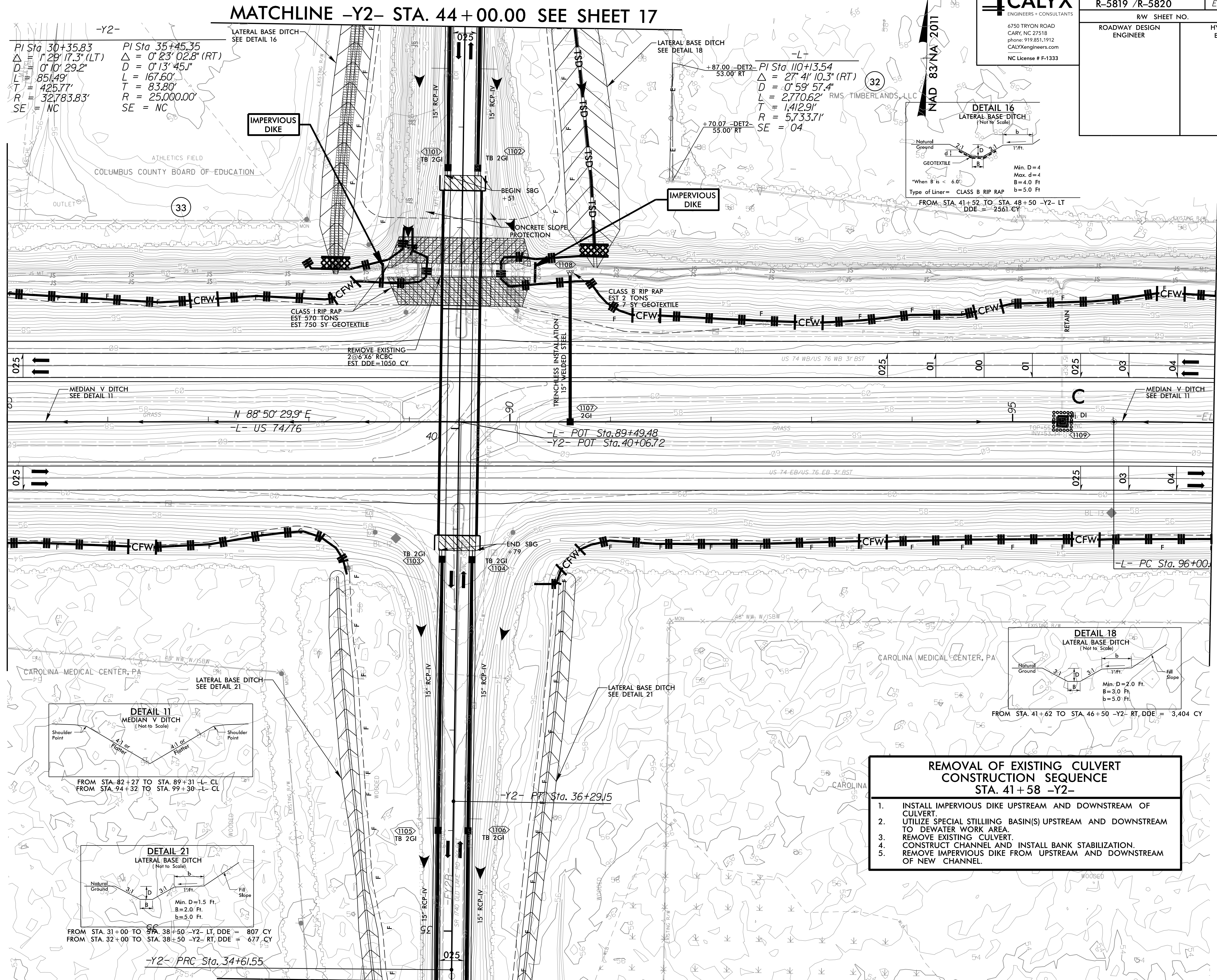


CLEARING AND GRUBBING EROSION CONTROL FOR CONSTRUCTION SHEET 11

UTILIZE FABRIC INSERT INLET PROTECTION DEVICES IN LIEU OF ROCK INLET SEDIMENT TRAPS, TYPE - C AS DIRECTED TO AVOID IMPOUNDMENT OF RUNOFF IN ROADWAY OPEN TO TRAFFIC

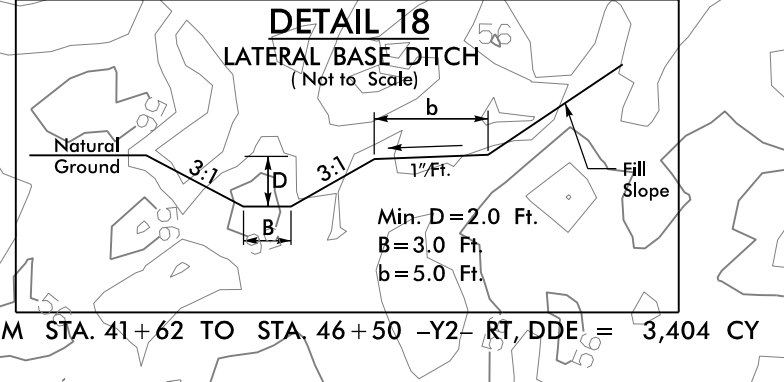
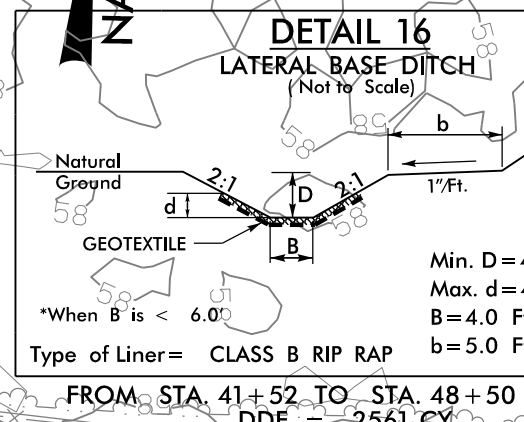


**-Y2-**

|   |  |
|---|--|
| PI Sta 30+35.83<br>Δ = 1' 29" 17.3" (LT)<br>D = 0' 10" 29.2"<br>L = 851.49'<br>T = 425.77'<br>R = 32,783.83'<br>SE = NC | PI Sta 35+45.35<br>Δ = 0' 23" 02.8" (RT)<br>D = 0' 13" 45.1"<br>L = 167.60'<br>T = 83.80'<br>R = 25,000.00'<br>SE = NC |
|---|--|

**-L-**

|   |
|---|
| PI Sta 110+13.54<br>Δ = 27' 4" 10.3" (RT)<br>D = 0' 59" 57.4"<br>L = 2,770.62' RMS, TIMBERLANDS, LLC<br>T = 1,412.91'<br>R = 5,733.71'<br>SE = 04 |
|---|



**REMOVAL OF EXISTING CULVERT CONSTRUCTION SEQUENCE STA. 41+58 -Y2-**

1. INSTALL IMPERVIOUS DIKE UPSTREAM AND DOWNSTREAM OF CULVERT.
2. UTILIZE SPECIAL STILLING BASIN(S) UPSTREAM AND DOWNSTREAM TO DEWATER WORK AREA.
3. REMOVE EXISTING CULVERT.
4. CONSTRUCT CHANNEL AND INSTALL BANK STABILIZATION.
5. REMOVE IMPERVIOUS DIKE FROM UPSTREAM AND DOWNSTREAM OF NEW CHANNEL.

**NOTES:**

■ PROP PAVED SHOULDER

FOR -L- PROFILE, SEE SHEET 30 & 31  
FOR -Y2- PROFILE, SEE SHEET 33

REVISIONS

8/17/99

3/15/2022  
R5819\_R5820\_REU\_EC\_PSH11.CC.dgn  
R5819.dwg