

8/17/99

3/14/2022  
R56819\_R5620\_REU\_EC\_PSH2B-9\_FINAL.dgn  
US:R56819

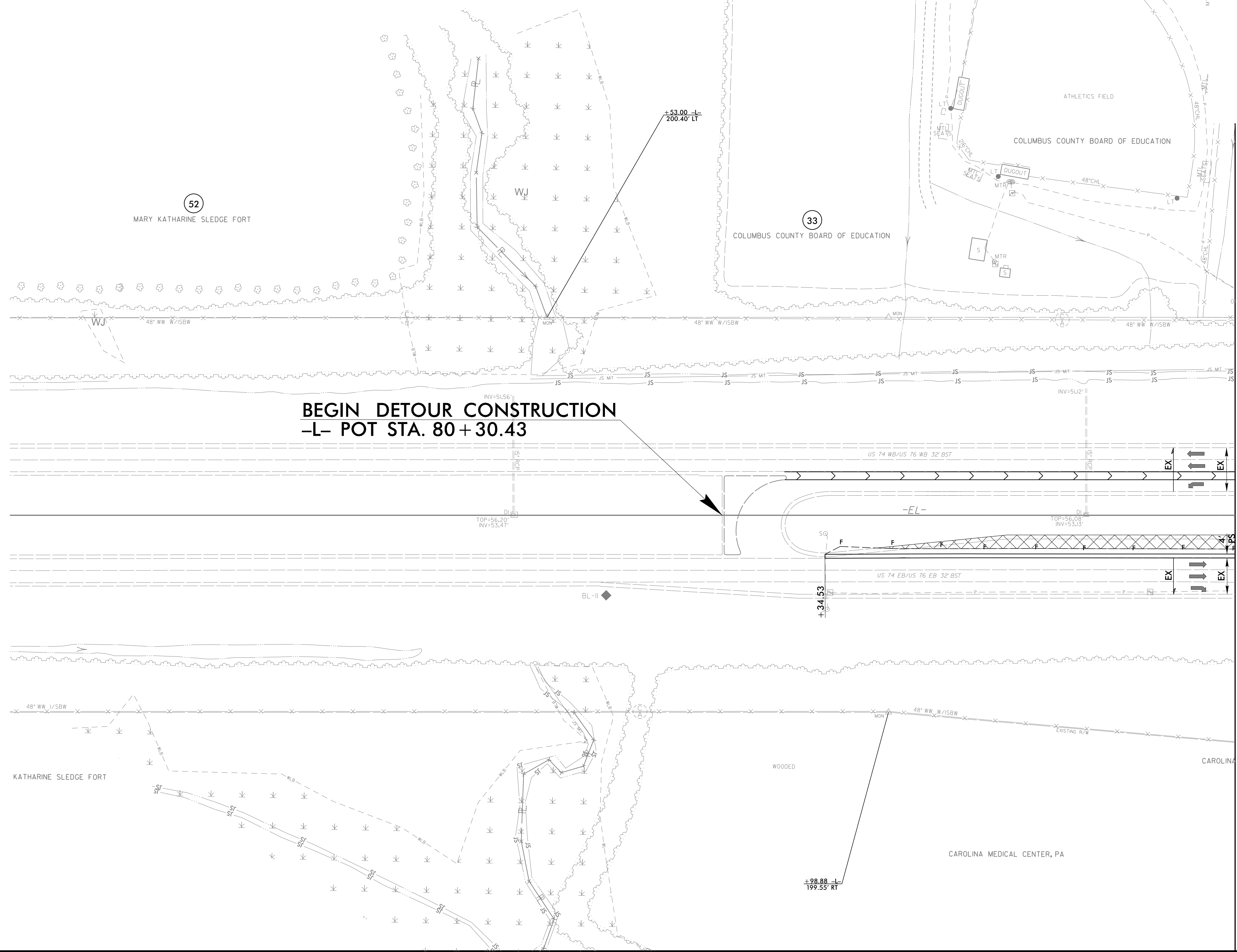
REVISIONS

**-Y2- DETOUR**

**NIV5**

NIV5 ENGINEERS & CONSULTANTS, INC.  
3300 REGENCY PARKWAY, SUITE 100  
CARY, NC 27518  
P: 919.851.1912 www.NIV5.com  
NC License # F-1333  
Formerly CLM Engineers & Consultants

PROJECT REFERENCE NO. <i>R-5819/R-5850</i>	SHEET NO. <i>EC-ITB/CONST-2B-9</i>
RW SHEET NO.	
ROADWAY DESIGN ENGINEER	HYDRAULICS ENGINEER



NAD 83/NA 2011

MATCHLINE -L- STA. 85+50.00  
SEE SHEET 2B-7

- NOTES:
- ▬ PROP PAVED SHOULDER
  - ⊗ PAVEMENT REMOVAL