

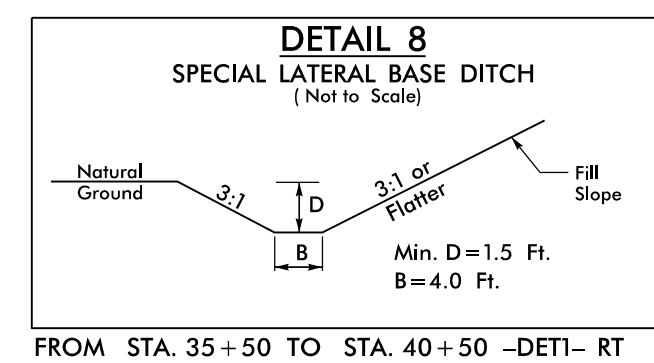
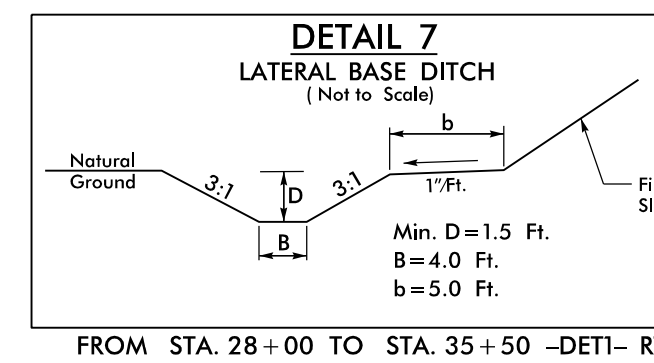
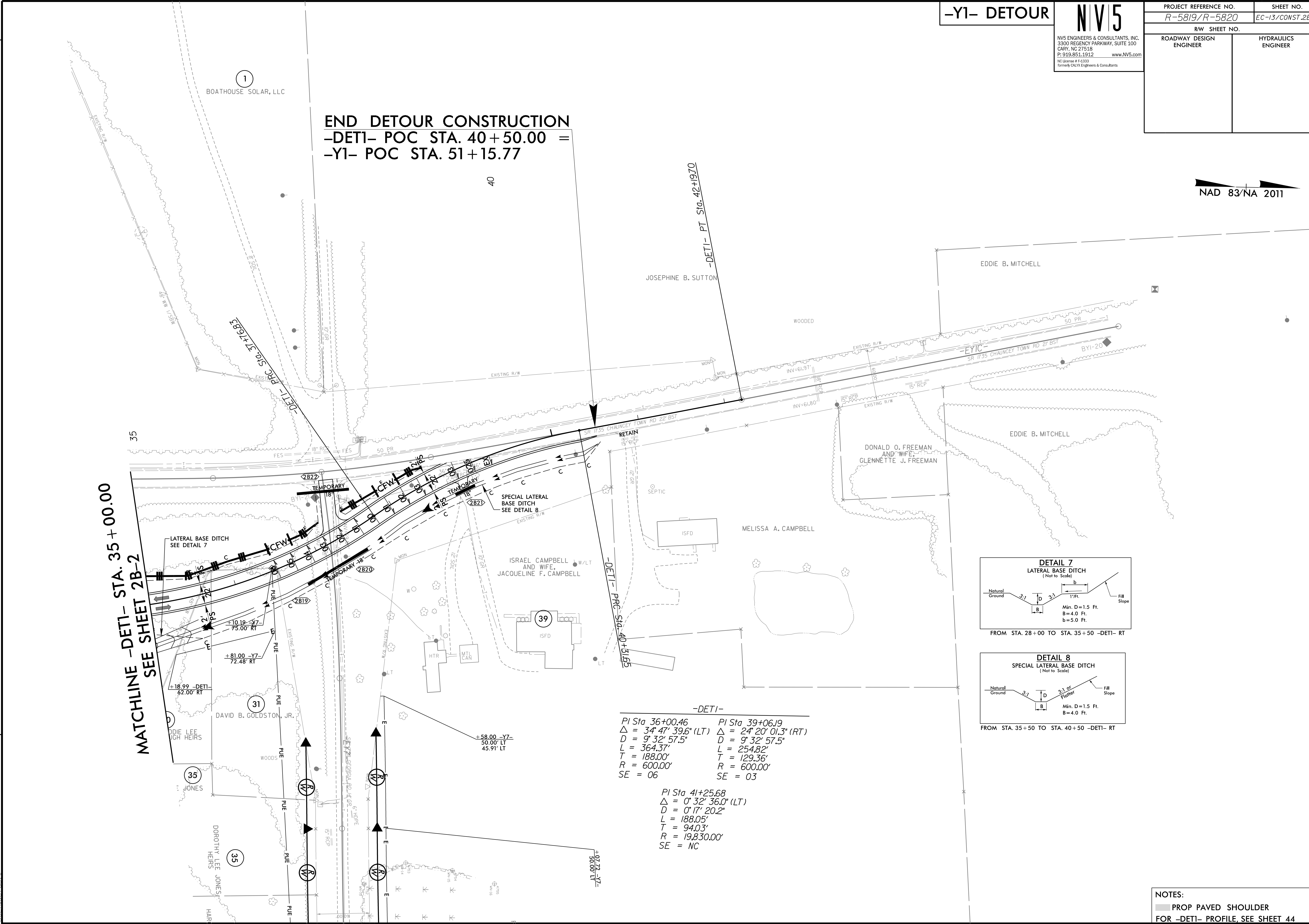
PROJECT REFERENCE NO. R-5819/R-5820	SHEET NO. EC-13/CONST-2B-3
RW SHEET NO.	
ROADWAY DESIGN ENGINEER	HYDRAULICS ENGINEER

END DETOUR CONSTRUCTION
-DETI- POC STA. 40+50.00 =
-Y1- POC STA. 51+15.77

NAD 83/NA 2011

REVISIONS

MATCHLINE -DETI- STA. 35+00.00
SEE SHEET 2B-2



-DETI-
 PI Sta 36+00.46 PI Sta 39+06.19
 $\Delta = 34^{\circ}47'39.6''$ (LT) $\Delta = 24^{\circ}20'01.3''$ (RT)
 $D = 9^{\circ}32'57.5''$ $D = 9^{\circ}32'57.5''$
 $L = 364.37'$ $L = 254.82'$
 $T = 188.00'$ $T = 129.36'$
 $R = 600.00'$ $R = 600.00'$
 $SE = 06$ $SE = 03$

PI Sta 41+25.68
 $\Delta = 0^{\circ}32'36.0''$ (LT)
 $D = 0^{\circ}17'20.2''$
 $L = 188.05'$
 $T = 94.03'$
 $R = 19,830.00'$
 $SE = NC$

NOTES:
 ■ PROP PAVED SHOULDER
 FOR -DETI- PROFILE, SEE SHEET 44

8/17/99

3/14/2022
R5819_R5820_REU_EC_PSH2B-3_FINAL.dgn
JSE/ETC/MLT