

8/17/99

-Y2- DETOUR

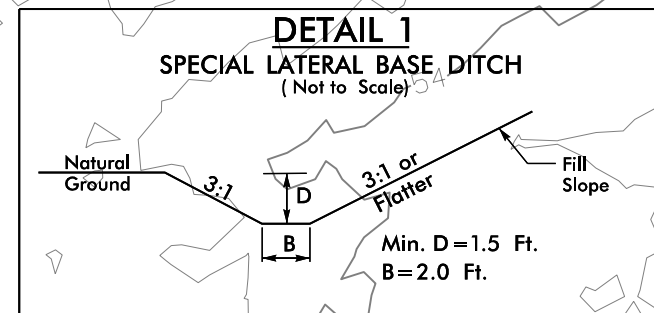
NV5

NV5 ENGINEERS & CONSULTANTS, INC.
3300 REGENCY PARKWAY, SUITE 100
CARY, NC 27518
P: 919.851.1912 www.NV5.com
NC License # F-1333
Formerly CALV Engineers & Consultants

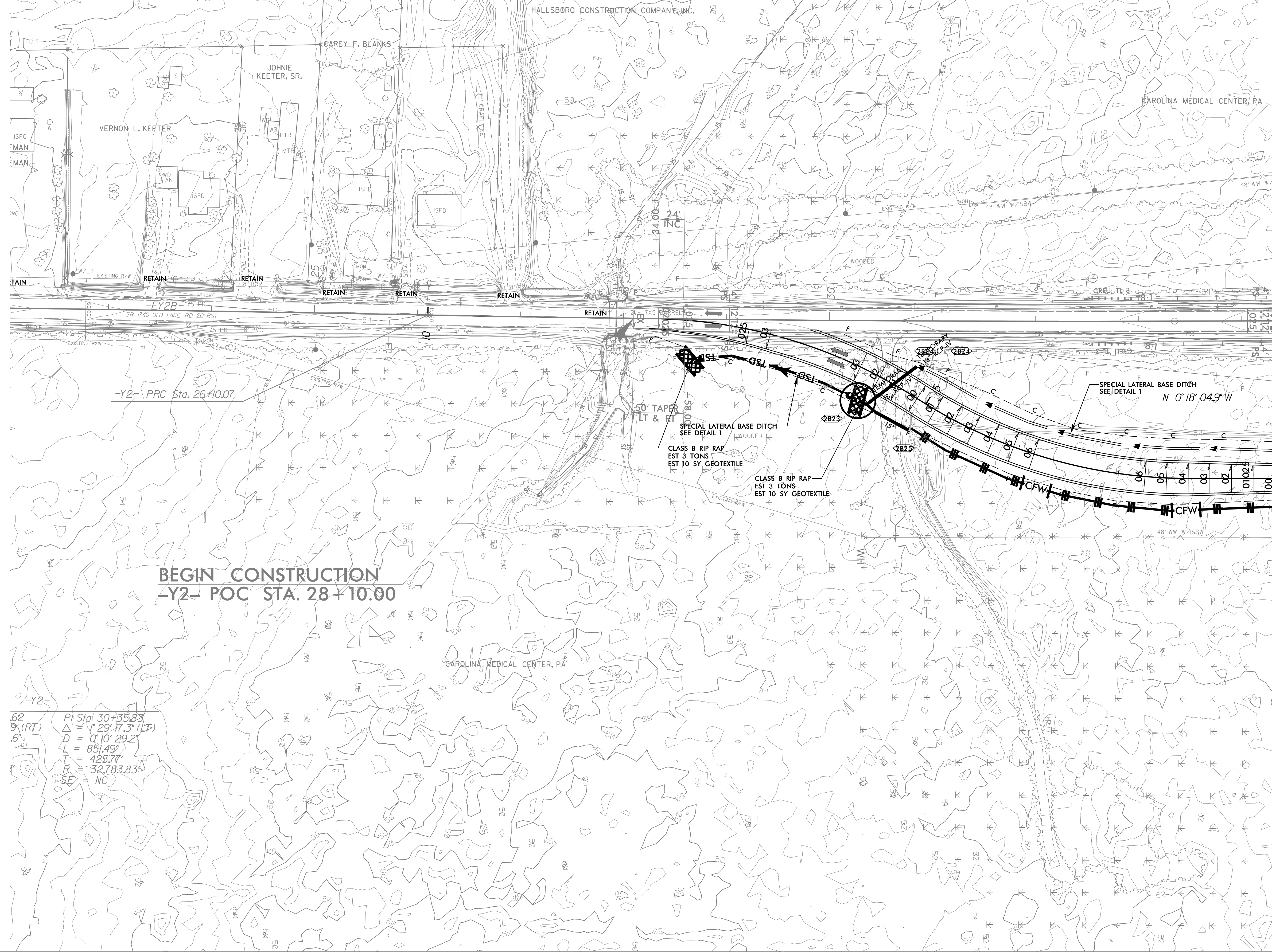
PROJECT REFERENCE NO. <i>R-5819/R-5820</i>	SHEET NO. <i>EC-09/CONST-2B-6</i>
R/W SHEET NO.	
ROADWAY DESIGN ENGINEER	HYDRAULICS ENGINEER

CLEARING AND GRUBBING
EROSION CONTROL FOR
CONSTRUCTION SHEET 2B-6

NAD 83/NA 2011



FROM STA. 12+65 TO STA. 14+61 -DET2- RT
FROM STA. 14+75 TO STA. 22+50 -DET2- LT



BEGIN CONSTRUCTION
-Y2- POC STA. 28+10.00

MATCHLINE -DET2- STA. 18+50.00
SEE SHEET 2B-7

-Y2-
 62
 9' (RT)
 6'
 PI Sta. 30+35.83
 $\Delta = 29^\circ 17.3' (LF)$
 $D = 0^\circ 10' 29.2''$
 $L = 851.49'$
 $T = 425.77'$
 $R = 32,783.83'$
 $SE = NC$

REVISIONS

3/14/2022
R5819-R5820_REU_EC_PSH2B-6_CG.dgn
US:Eric.Lamb

NOTES:
 PROP PAVED SHOULDER
 FOR -DET2- PROFILE, SEE SHEET 45