

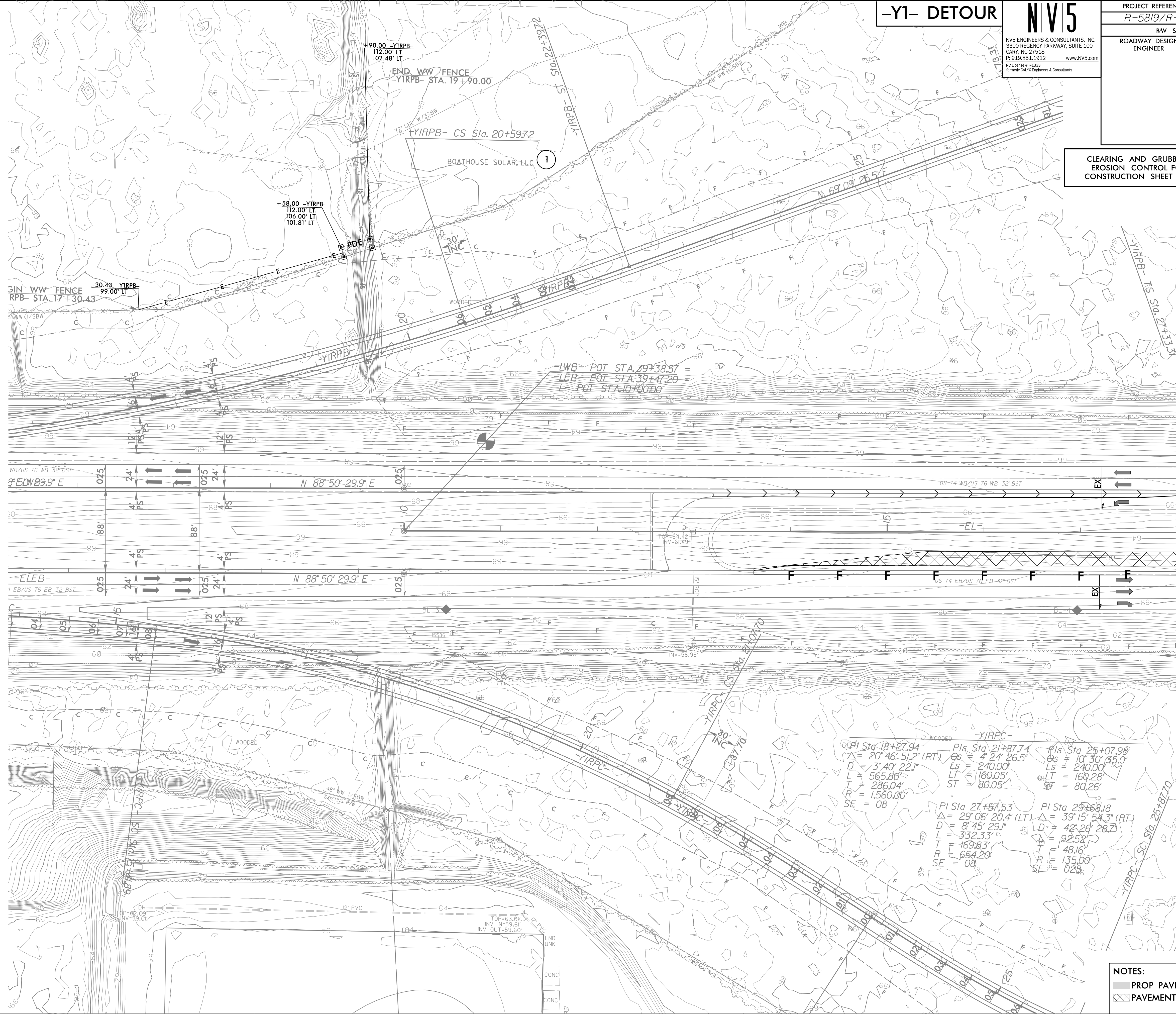
PROJECT REFERENCE NO. R-5819/R-5820	SHEET NO. EC-07/CONST-2B-4
RW SHEET NO.	
ROADWAY DESIGN ENGINEER	HYDRAULICS ENGINEER

NV5 ENGINEERS & CONSULTANTS, INC.
3300 REGENCY PARKWAY, SUITE 100
CARY, NC 27513
P: 919.851.1912 www.NV5.com
NC License # F-1333
Formerly GALN Engineers & Consultants

CLEARING AND GRUBBING
EROSION CONTROL FOR
CONSTRUCTION SHEET 2B-4

NAD 83/NA 2011

REVISIONS



NOTES:
 PROP PAVED SHOULDER
 PAVEMENT REMOVAL