

8/17/99

CLEARING AND GRUBBING
EROSION CONTROL FOR
CONSTRUCTION SHEET 2B-3

-Y1- DETOUR

NV5

NV5 ENGINEERS & CONSULTANTS, INC.
3300 REGENCY PARKWAY, SUITE 100
CARY, NC 27518
P: 919.851.1912 www.NV5.com
NC License # F-1335
Formerly CALV Engineering & Consultants

PROJECT REFERENCE NO. R-5819/R-5820	SHEET NO. EC-06/CONST-2B-3
RW SHEET NO.	
ROADWAY DESIGN ENGINEER	HYDRAULICS ENGINEER

NAD 83/NA 2011

END CONSTRUCTION
-Y1- POC STA. 51+75.00

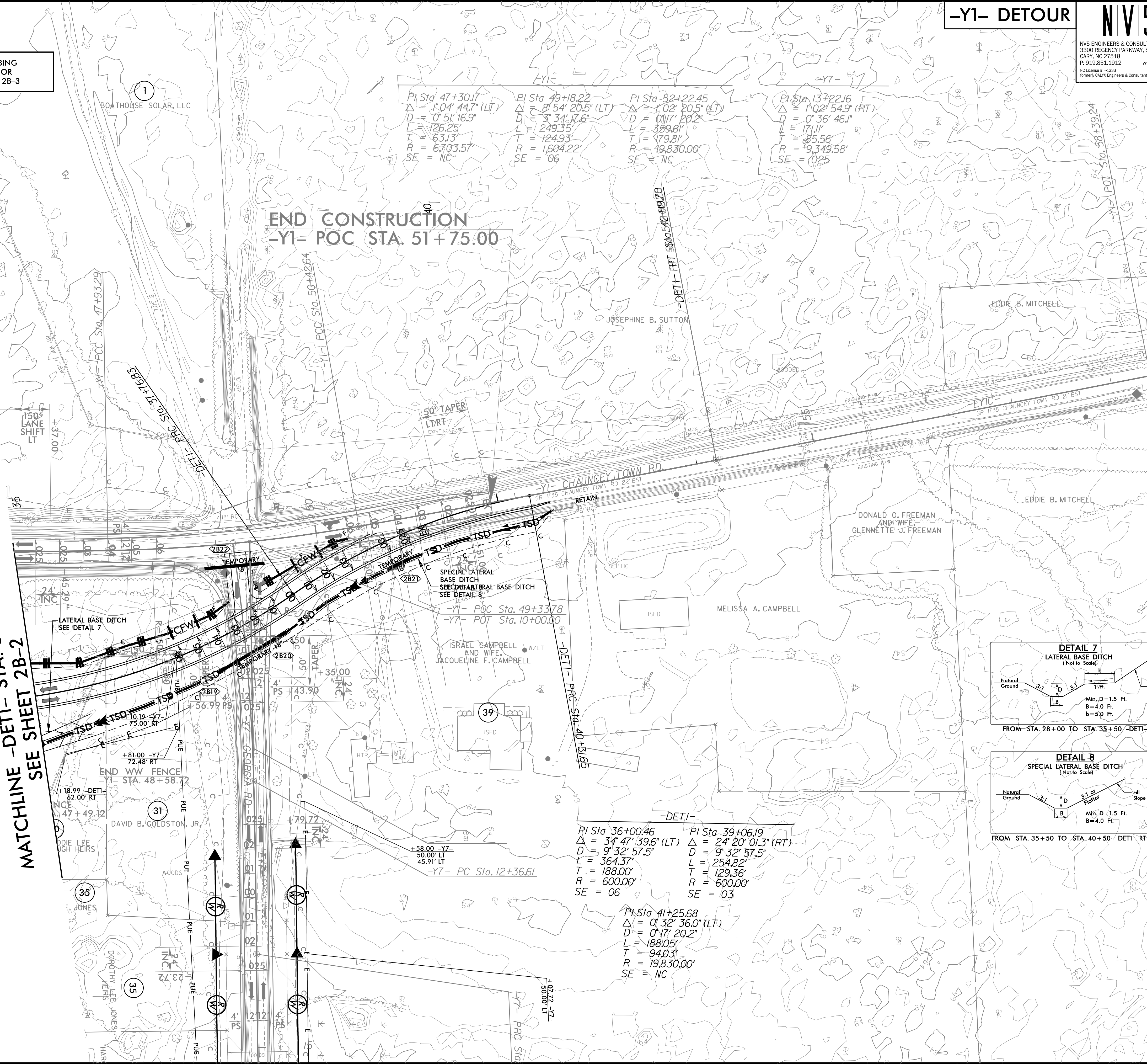
PI Sta 47+30.17
 $\Delta = 1^{\circ}04'44.7"$ (LT)
 $D = 0^{\circ}51'16.9"$
 $L = 126.25'$
 $T = 63.13'$
 $R = 6,703.57'$
 $SE = NC$

PI Sta 49+18.22
 $\Delta = 8^{\circ}54'20.5"$ (LT)
 $D = 3^{\circ}34'17.6"$
 $L = 249.35'$
 $T = 124.93'$
 $R = 1,604.22'$
 $SE = 06$

PI Sta 52+22.45
 $\Delta = 1^{\circ}02'20.5"$ (LT)
 $D = 0^{\circ}17'20.2"$
 $L = 399.81'$
 $T = 179.81'$
 $R = 19,830.00'$
 $SE = NC$

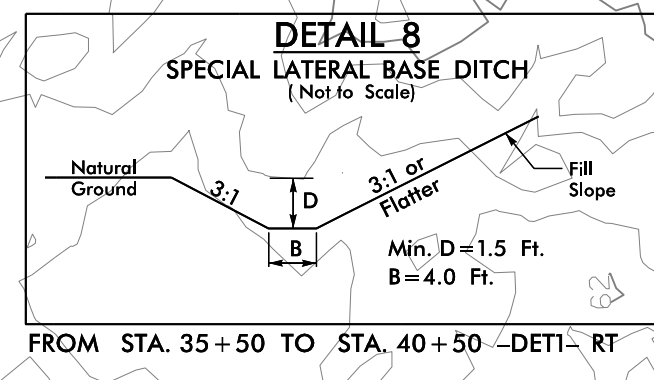
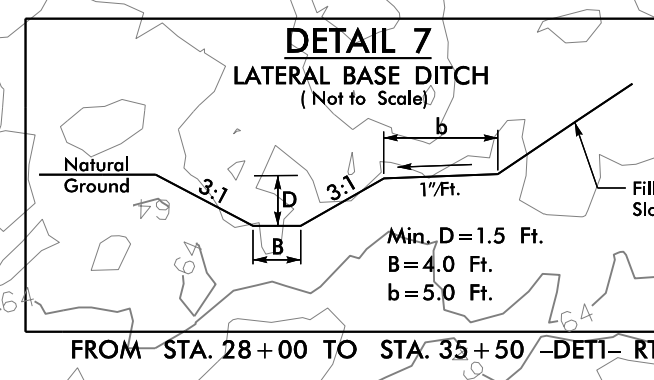
PI Sta 137+22.16
 $\Delta = 1^{\circ}02'54.9"$ (RT)
 $D = 0^{\circ}36'46.1"$
 $L = 171.11'$
 $T = 85.56'$
 $R = 9,349.58'$
 $SE = 025$

MATCHLINE -DETI- STA. 35+00.00
SEE SHEET 2B-2



SPECIAL LATERAL BASE DITCH
SEE DETAIL 7

SPECIAL LATERAL BASE DITCH
SEE DETAIL 8



PI Sta 36+00.46
 $\Delta = 3^{\circ}47'39.6"$ (LT)
 $D = 9^{\circ}32'57.5"$
 $L = 364.37'$
 $T = 188.00'$
 $R = 600.00'$
 $SE = 06$

PI Sta 39+06.19
 $\Delta = 2^{\circ}20'01.3"$ (RT)
 $D = 9^{\circ}32'57.5"$
 $L = 254.82'$
 $T = 129.36'$
 $R = 600.00'$
 $SE = 03$

PI Sta 41+25.68
 $\Delta = 0^{\circ}32'36.0"$ (LT)
 $D = 0^{\circ}17'20.2"$
 $L = 188.05'$
 $T = 94.03'$
 $R = 19,830.00'$
 $SE = NC$

NOTES:
 PROP PAVED SHOULDER
FOR -DETI- PROFILE, SEE SHEET 44

REVISIONS

3/14/2022
R5819_R5820_REU_EC_PSH2B-3_CG.dgn
R5819