

-Y3-		-Y1A-	
PI Sta 11+71.56 Δ = 0° 09' 09.4" (LT) D = 0° 02' 40.1" L = 343.13' T = 171.56' R = 128,825.59'	PI Sta 18+86.84 Δ = 1° 29' 31.3" (RT) D = 0° 16' 02.8" L = 557.87' T = 278.95' R = 21,423.02' SE = NC	PI Sta 22+79.03 Δ = 0° 15' 19.8" (RT) D = 0° 05' 02.2" L = 226.53' T = 113.26' R = 50,800.59' SE = EX	PI Sta 14+19.68 Δ = 51° 29' 08.4" (LT) D = 16° 51' 06.1" L = 305.52' T = 163.94' R = 340.00' SE = 04

-Y3ROUND-		-Y5-	
PI Sta 10+51.46 Δ = 89° 23' 55.6" (RT) D = 110° 11' 03.1" L = 81.4' T = 51.46' R = 52.00'	PI Sta 11+33.81 Δ = 90° 44' 25.1" (RT) D = 110° 11' 03.1" L = 82.35' T = 52.68' R = 52.00'	PI Sta 11+80.49 Δ = 0° 18' 10.9" (RT) D = 0° 05' 02.2" L = 360.97' T = 180.49' R = 68,254.05' SE = EX	
PI Sta 11+97.48 Δ = 66° 20' 28.7" (RT) D = 110° 11' 03.1" L = 60.21' T = 33.99' R = 52.00'	PI Sta 13+03.04 Δ = 113° 31' 10.6" (RT) D = 110° 11' 03.1" L = 103.03' T = 79.34' R = 52.00'		

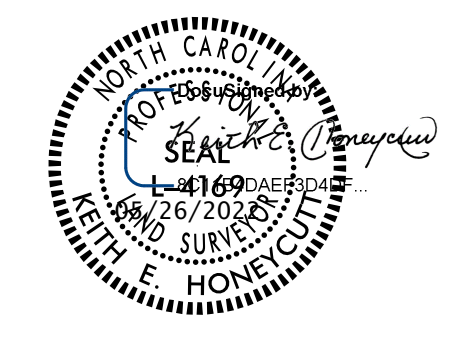
NAD 83/NA 2011

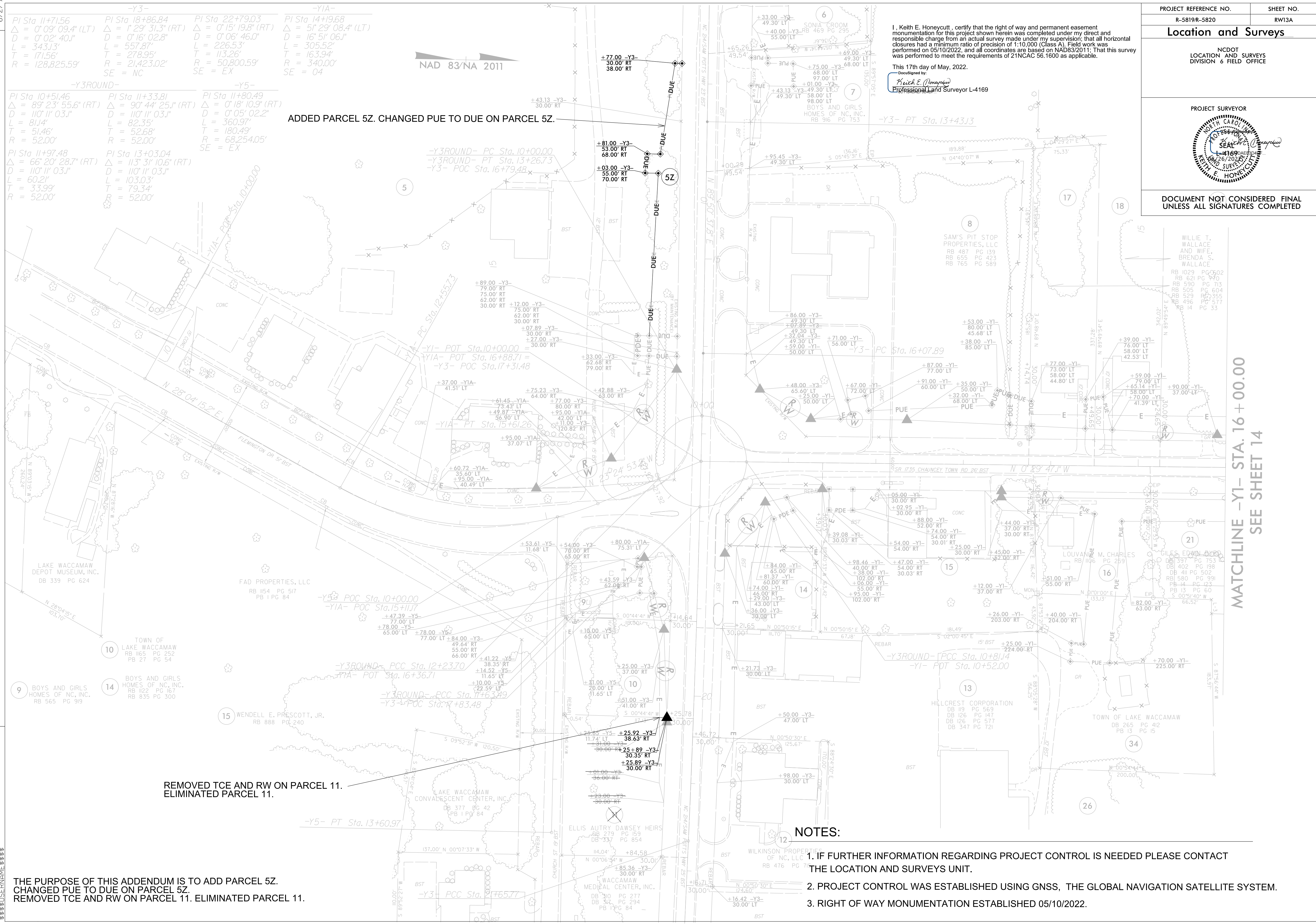
ADDED PARCEL 5Z. CHANGED PUE TO DUE ON PARCEL 5Z.

REMOVED TCE AND RW ON PARCEL 11. ELIMINATED PARCEL 11.

THE PURPOSE OF THIS ADDENDUM IS TO ADD PARCEL 5Z. CHANGED PUE TO DUE ON PARCEL 5Z. REMOVED TCE AND RW ON PARCEL 11. ELIMINATED PARCEL 11.

REVISIONS

PROJECT REFERENCE NO. R-5819R-5820	SHEET NO. RW13A
Location and Surveys	
NC DOT LOCATION AND SURVEYS DIVISION 6 FIELD OFFICE	
PROJECT SURVEYOR 	
DOCUMENT NOT CONSIDERED FINAL UNLESS ALL SIGNATURES COMPLETED	



NOTES:

1. IF FURTHER INFORMATION REGARDING PROJECT CONTROL IS NEEDED PLEASE CONTACT THE LOCATION AND SURVEYS UNIT.
2. PROJECT CONTROL WAS ESTABLISHED USING GNSS, THE GLOBAL NAVIGATION SATELLITE SYSTEM.
3. RIGHT OF WAY MONUMENTATION ESTABLISHED 05/10/2022.