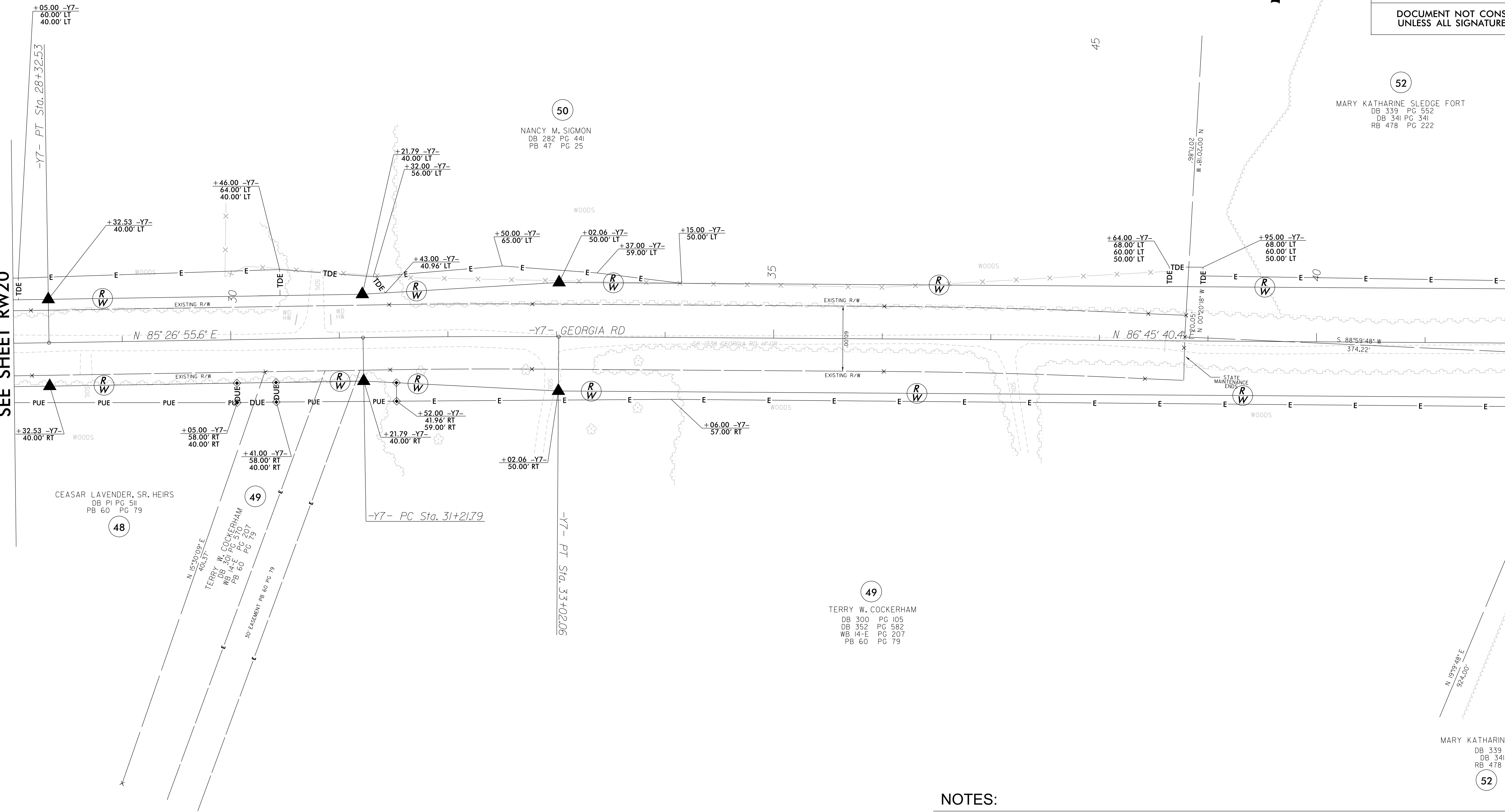


REVISIONS

MATCH LINE -Y7- STA 28+00.00
SEE SHEET RW20

MATCH LINE -Y7- STA 42+00.00
SEE SHEET RW22




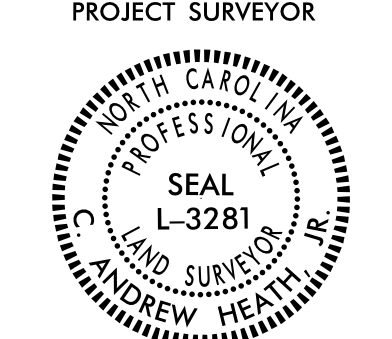
-Y7-

PI Sta 27+72.88	PI Sta 32+11.93
$\Delta = 0^\circ 52' 06.7" (LT)$	$\Delta = 1^\circ 18' 44.8" (RT)$
$D = 0^\circ 43' 40.9"$	$D = 0^\circ 43' 40.9"$
$L = 119.30'$	$L = 180.27'$
$T = 59.65'$	$T = 90.14'$
$R = 7,870.00'$	$R = 7,870.00'$
$SE = NC$	$SE = NC$

I, C. Andrew Heath Jr., certify that the right of way and permanent easement monumentation for this project shown herein was completed under my direct and responsible charge from an actual survey made under my supervision; that all horizontal closures had a minimum ratio of precision of 1:10,000 (Class A). Field work was performed from 02/01/2022 to 03/03/2022, and all coordinates are based on NAD83/2011; That this survey was performed to meet the requirements of 21NCAC 56.1600 as applicable.

This 15th day of March, 2022.

C. Andrew Heath Jr.
Professional Land Surveyor L-3281

PROJECT REFERENCE NO. R-5819R-5820	SHEET NO. RW21
Location and Surveys	
 <small>NIV5 ENGINEERS & CONSULTANTS, INC. 3300 REGENCY PARKWAY, SUITE 100 CARY, NC 27518 P: 919.851.1912 www.NIV5.com</small>	
 <small>PROJECT SURVEYOR NORTH CAROLINA SEAL L-3281 LAND SURVEYOR ANDREW HEATH, JR.</small>	
DOCUMENT NOT CONSIDERED FINAL UNLESS ALL SIGNATURES COMPLETED	

NOTES:

1. IF FURTHER INFORMATION REGARDING PROJECT CONTROL IS NEEDED PLEASE CONTACT THE LOCATION AND SURVEYS UNIT.
2. PROJECT CONTROL WAS ESTABLISHED USING GNSS, THE GLOBAL NAVIGATION SATELLITE SYSTEM.
3. RIGHT OF WAY MONUMENTATION ESTABLISHED FEBRUARY 2022 TO MARCH 2022 .