

Location and Surveys

NVS

NVS ENGINEERS & CONSULTANTS, INC.
3300 REGENCY PARKWAY, SUITE 100
CARY, NC 27518
P: 919.851.1912 www.NVS.com
N: 01062741000
Formerly CAY Engineers & Consultants

PROJECT SURVEYOR



DOCUMENT NOT CONSIDERED FINAL
UNLESS ALL SIGNATURES COMPLETED

I, C. Andrew Heath Jr., certify that the right of way and permanent easement monumentation for this project shown herein was completed under my direct and responsible charge from an actual survey made under my supervision; that all horizontal closures had a minimum ratio of precision of 1:10,000 (Class A). Field work was performed from 02/01/2022 to 03/03/2022, and all coordinates are based on NAD83/2011; That this survey was performed to meet the requirements of 21NCAC 56.1600 as applicable.

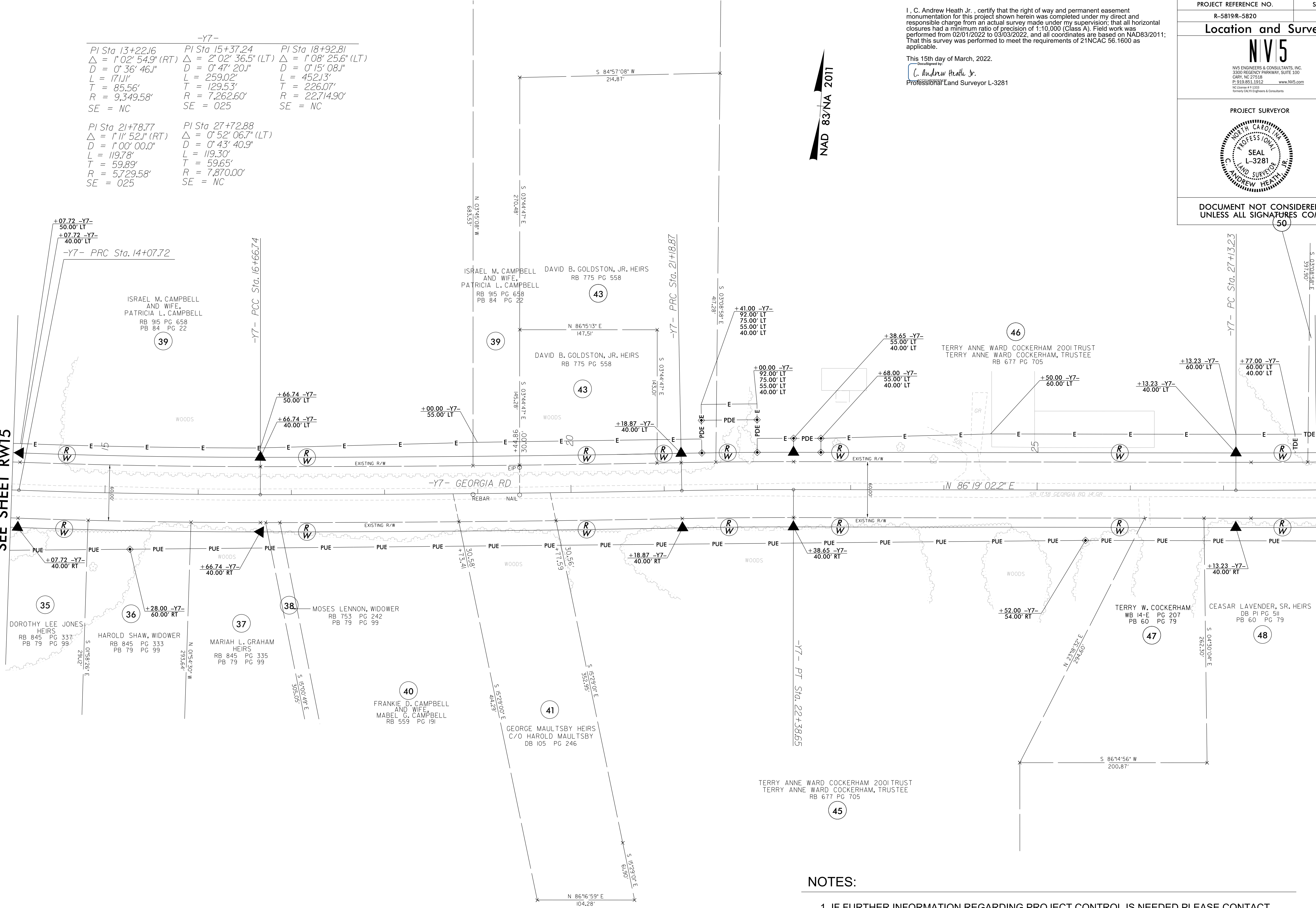
This 15th day of March, 2022.
C. Andrew Heath Jr.
Professional Land Surveyor L-3281

NAD 83/NA 2011

-Y7-		
PI Sta 13+22.16	PI Sta 15+37.24	PI Sta 18+92.81
$\Delta = 1^{\circ} 02' 54.9''$ (RT)	$\Delta = 2^{\circ} 02' 36.5''$ (LT)	$\Delta = 1^{\circ} 08' 25.6''$ (LT)
D = 0' 36' 46.1"	D = 0' 47' 20.1"	D = 0' 15' 08.1"
L = 171.1'	L = 259.02'	L = 452.13'
T = 85.56'	T = 129.53'	T = 226.07'
R = 9,349.58'	R = 7,262.60'	R = 22,714.90'
SE = NC	SE = 025	SE = NC
PI Sta 21+78.77	PI Sta 27+72.88	
$\Delta = 1^{\circ} 11' 52.1''$ (RT)	$\Delta = 0^{\circ} 52' 06.7''$ (LT)	
D = 1' 00' 00.0"	D = 0' 43' 40.9"	
L = 119.78'	L = 119.30'	
T = 59.89'	T = 59.65'	
R = 5,729.58'	R = 7,870.00'	
SE = 025	SE = NC	

MATCH LINE -Y7- STA 14+00.00
SEE SHEET RW15

MATCH LINE -Y7- STA 28+00.00
SEE SHEET RW21



REVISIONS

NOTES:

1. IF FURTHER INFORMATION REGARDING PROJECT CONTROL IS NEEDED PLEASE CONTACT THE LOCATION AND SURVEYS UNIT.
2. PROJECT CONTROL WAS ESTABLISHED USING GNSS, THE GLOBAL NAVIGATION SATELLITE SYSTEM.
3. RIGHT OF WAY MONUMENTATION ESTABLISHED FEBRUARY 2022 TO MARCH 2022 .

15-MAR-2022 14:08
D:\Projects\2021\2021014.87_SURVEY_SHEETS\5819R-5820\1s-rw20.dgn
AT:\NCCAR-GRANS100
scott@stanford