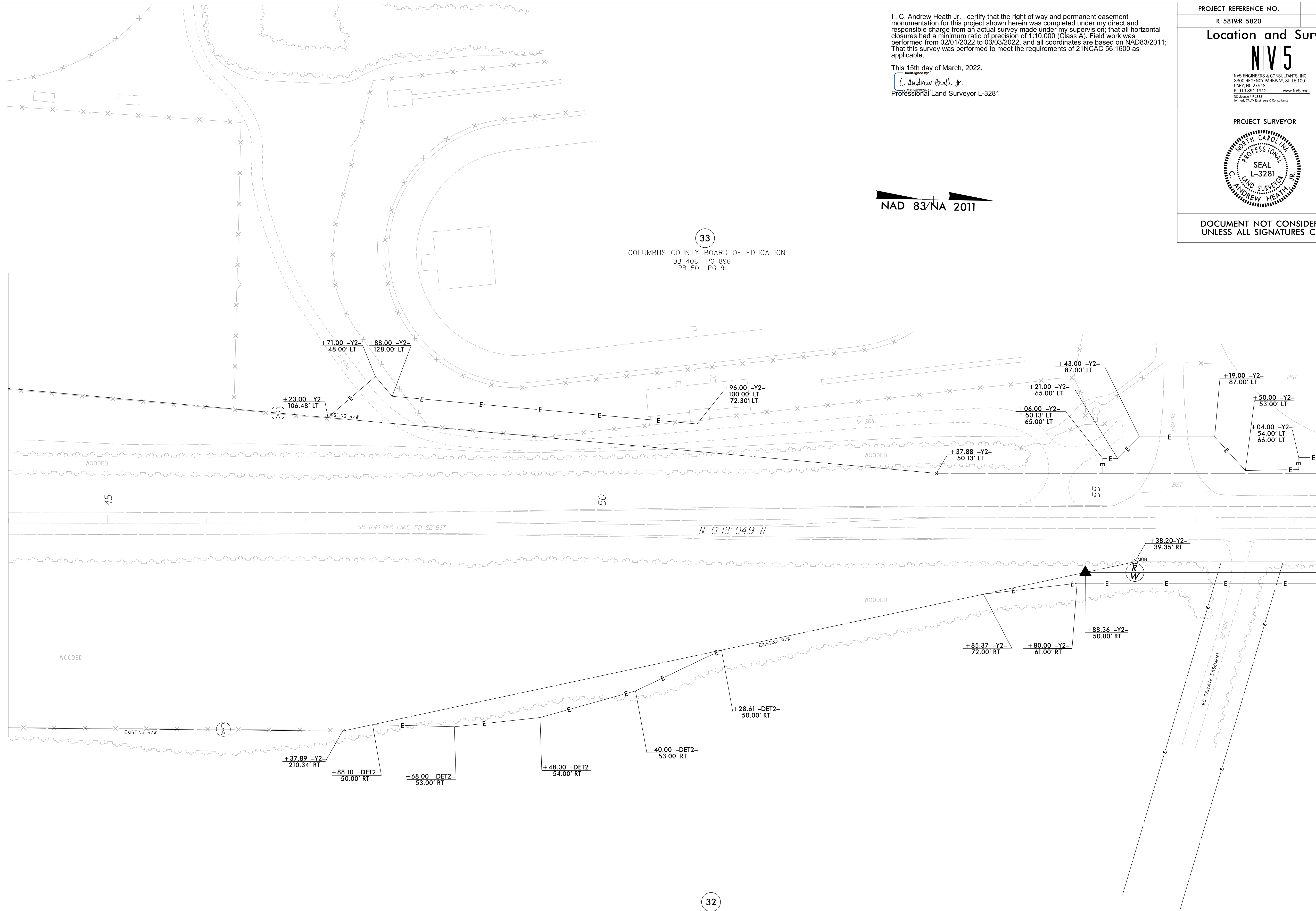


6/2/09

15-MAR-2022 15:35 2021014.B7A.SURV.RW.SHEETS\5819_5820.1.s_rw17.dgn
C:\Users\andrew.heath\AT\NCCAR-CRANSTOV

REVISIONS

MATCHLINE -Y2- STA. 44 + 00.00
SEE SHEET RW11



33
COLUMBUS COUNTY BOARD OF EDUCATION
DB 408 PG 896
PB 50 PG 91

32
RMS TIMBERLANDS, LLC
RB 885 PG 514
PB 72 PG 43

I, C. Andrew Heath Jr., certify that the right of way and permanent easement monumentation for this project shown herein was completed under my direct and responsible charge from an actual survey made under my supervision; that all horizontal closures had a minimum ratio of precision of 1:10,000 (Class A). Field work was performed from 02/01/2022 to 03/03/2022, and all coordinates are based on NAD83/2011; That this survey was performed to meet the requirements of 21NCAC 56.1600 as applicable.

This 15th day of March, 2022.
 Deceased by:
 C. Andrew Heath Jr.
 Professional Land Surveyor L-3281

PROJECT REFERENCE NO. R-5819R-5820	SHEET NO. RW17
Location and Surveys	
NV5	
<small>NV5 ENGINEERS & CONSULTANTS, INC. 3300 REGENCY PARKWAY, SUITE 100 CARY, NC 27518 P: 919.851.1912 www.NV5.com NC License #1333 Formerly CIVIL Engineers & Consultants</small>	
PROJECT SURVEYOR	
DOCUMENT NOT CONSIDERED FINAL UNLESS ALL SIGNATURES COMPLETED	

NAD 83/NA 2011

MATCHLINE -Y2- STA. 57 + 25.00
SEE SHEET RW18

NOTES:

1. IF FURTHER INFORMATION REGARDING PROJECT CONTROL IS NEEDED PLEASE CONTACT THE LOCATION AND SURVEYS UNIT.
2. PROJECT CONTROL WAS ESTABLISHED USING GNSS, THE GLOBAL NAVIGATION SATELLITE SYSTEM.
3. RIGHT OF WAY MONUMENTATION ESTABLISHED FEBRUARY 2022 TO MARCH 2022 .