
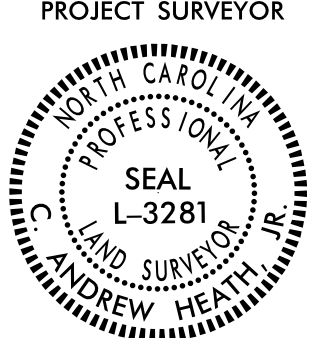


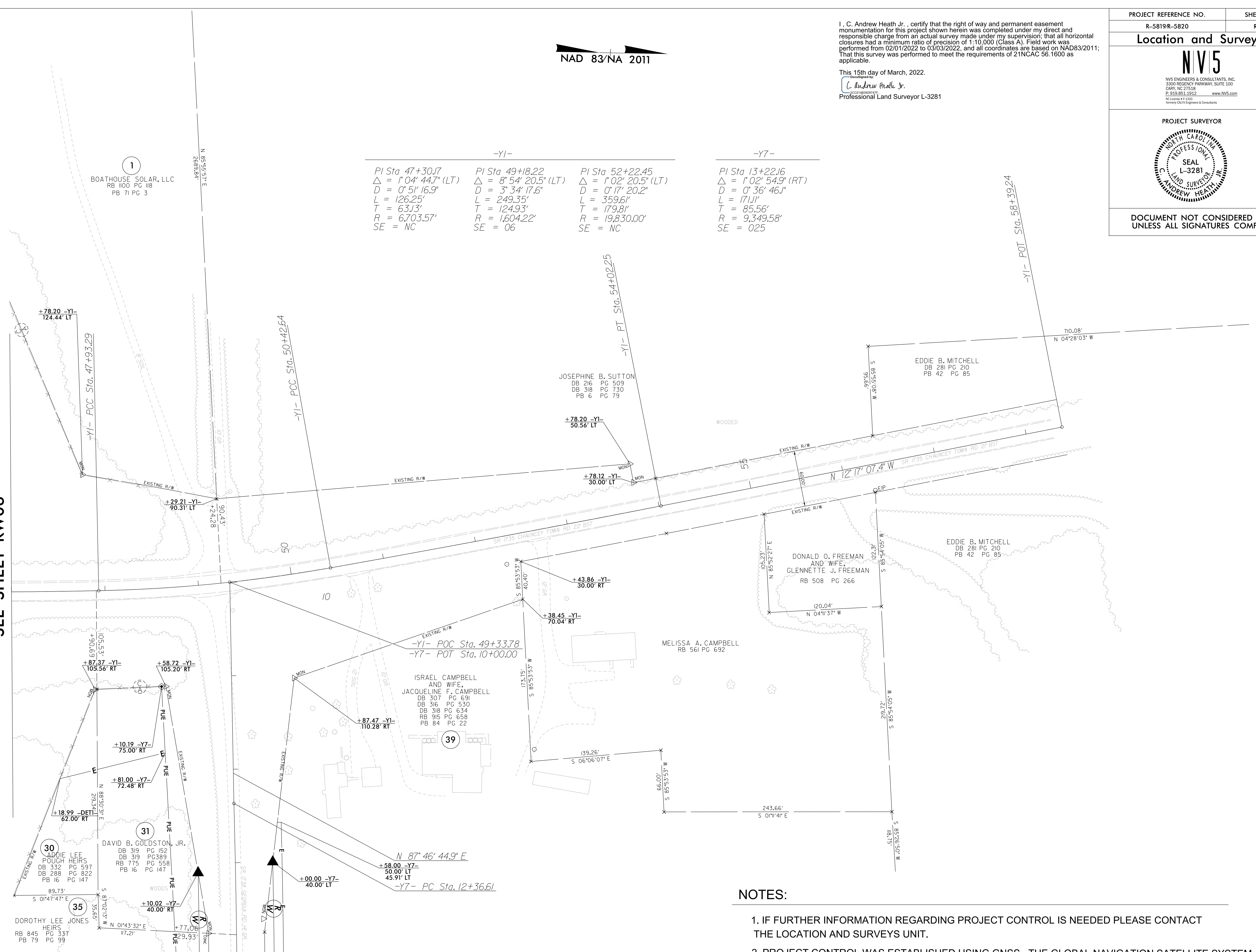
NAD 83/NA 2011

I, C. Andrew Heath Jr., certify that the right of way and permanent easement monumentation for this project shown herein was completed under my direct and responsible charge from an actual survey made under my supervision; that all horizontal closures had a minimum ratio of precision of 1:10,000 (Class A). Field work was performed from 02/01/2022 to 03/03/2022, and all coordinates are based on NAD83/2011; That this survey was performed to meet the requirements of 21NCAC 56.1600 as applicable.
This 15th day of March, 2022.
C. Andrew Heath Jr.
Professional Land Surveyor L-3281

PROJECT REFERENCE NO.	SHEET NO.
R-5819R-5820	RW15
Location and Surveys	
 NV5 ENGINEERS & CONSULTANTS, INC. 3300 REGENCY PARKWAY, SUITE 100 CARY, NC 27518 P: 919.851.1912 www.nv5.com <small>NC License # F-5333 Formerly CALS Engineers & Consultants</small>	
PROJECT SURVEYOR	
	
DOCUMENT NOT CONSIDERED FINAL UNLESS ALL SIGNATURES COMPLETED	

MATCHLINE -Y1- STA. 47 + 00.00
SEE SHEET RW06

MATCH LINE -Y7- STA 14 + 00.00
SEE SHEET RW20



-Y1-			-Y7-		
PI Sta 47+30.17	PI Sta 49+18.22	PI Sta 52+22.45	PI Sta 13+22.16		
$\Delta = 1^{\circ}04'44.7''$ (LT)	$\Delta = 8^{\circ}54'20.5''$ (LT)	$\Delta = 1^{\circ}02'20.5''$ (LT)	$\Delta = 1^{\circ}02'54.9''$ (RT)		
D = 0'51'16.9"	D = 3'34'17.6"	D = 0'17'20.2"	D = 0'36'46.1"		
L = 126.25'	L = 249.35'	L = 359.61'	L = 171.11'		
T = 63.13'	T = 124.93'	T = 179.81'	T = 85.56'		
R = 6,703.57'	R = 1,604.22'	R = 19,830.00'	R = 9,349.58'		
SE = NC	SE = 06	SE = NC	SE = 025		

NOTES:

1. IF FURTHER INFORMATION REGARDING PROJECT CONTROL IS NEEDED PLEASE CONTACT THE LOCATION AND SURVEYS UNIT.
2. PROJECT CONTROL WAS ESTABLISHED USING GNSS, THE GLOBAL NAVIGATION SATELLITE SYSTEM.
3. RIGHT OF WAY MONUMENTATION ESTABLISHED FEBRUARY 2022 TO MARCH 2022 .