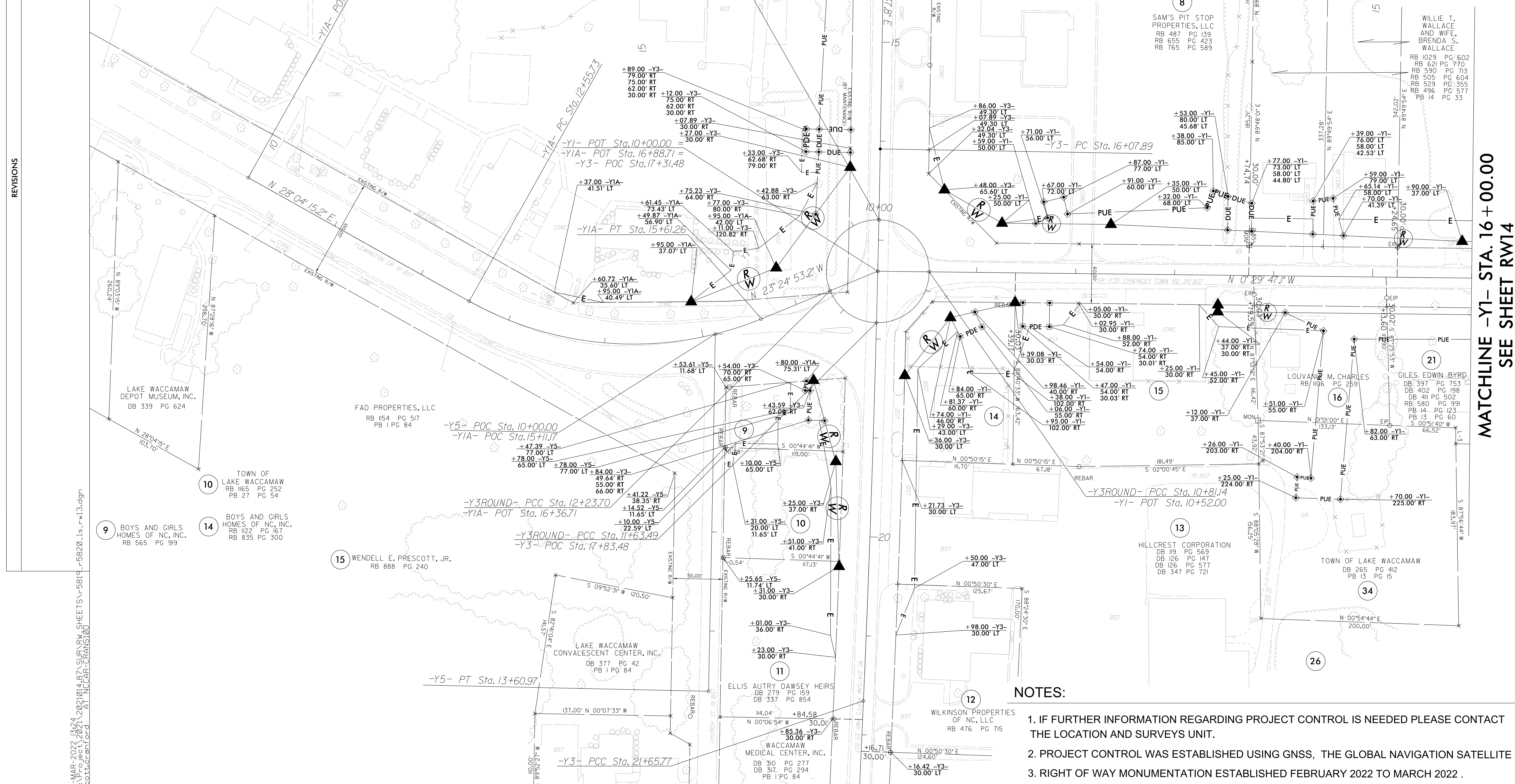


-Y3-		-Y1A-	
PI Sta 11+71.56 Δ = 0° 09' 09.4" (LT) D = 0' 02' 40.1" L = 343.13' T = 171.56' R = 128,825.59'	PI Sta 18+86.84 Δ = 1° 29' 31.3" (RT) D = 0' 16' 02.8" L = 557.87' T = 278.95' R = 21,423.02' SE = NC	PI Sta 22+79.03 Δ = 0° 15' 19.8" (RT) D = 0' 06' 46.0" L = 226.53' T = 113.26' R = 50,800.59' SE = EX	PI Sta 14+19.68 Δ = 51° 29' 08.4" (LT) D = 15' 51' 06.1" L = 305.52' T = 163.94' R = 340.00' SE = 04
-Y3ROUND-		-Y5-	
PI Sta 10+51.46 Δ = 89° 23' 55.6" (RT) D = 110' 11' 03.1" L = 81.14' T = 51.46' R = 52.00'	PI Sta 11+33.81 Δ = 90° 44' 25.1" (RT) D = 110' 11' 03.1" L = 82.35' T = 52.68' R = 52.00'	PI Sta 11+80.49 Δ = 0° 18' 10.9" (RT) D = 0° 05' 02.2" L = 360.97' T = 180.49' R = 68,254.05' SE = EX	
PI Sta 11+97.48 Δ = 66° 20' 28.7" (RT) D = 110' 11' 03.1" L = 60.21' T = 33.99' R = 52.00'	PI Sta 13+03.04 Δ = 113° 31' 10.6" (RT) D = 110' 11' 03.1" L = 103.03' T = 79.34' R = 52.00'		

NAD 83/NA 2011

5



I, C. Andrew Heath Jr., certify that the right of way and permanent easement monumentation for this project shown herein was completed under my direct and responsible charge from an actual survey made under my supervision, that all horizontal closures had a minimum ratio of precision of 1:10,000 (Class A). Field work was performed from 02/01/2022 to 03/03/2022, and all coordinates are based on NAD83/2011. That this survey was performed to meet the requirements of 21NCA 56.1600 as applicable.

This 15th day of March, 2022.

C. Andrew Heath Jr.
Professional Land Surveyor L-3281

PROJECT REFERENCE NO. R-5819R-5820	SHEET NO. RW13
Location and Surveys	
NIV5	
<small>NIV5 ENGINEERS & CONSULTANTS, INC. 3300 REGENCY PARKWAY, SUITE 100 CARY, NC 27518 P: 919.851.1912 www.NIV5.com</small>	
PROJECT SURVEYOR	
DOCUMENT NOT CONSIDERED FINAL UNLESS ALL SIGNATURES COMPLETED	

MATCHLINE -Y1- STA. 16 + 00.00
SEE SHEET RW14

NOTES:

1. IF FURTHER INFORMATION REGARDING PROJECT CONTROL IS NEEDED PLEASE CONTACT THE LOCATION AND SURVEYS UNIT.
2. PROJECT CONTROL WAS ESTABLISHED USING GNSS, THE GLOBAL NAVIGATION SATELLITE SYSTEM.
3. RIGHT OF WAY MONUMENTATION ESTABLISHED FEBRUARY 2022 TO MARCH 2022.