
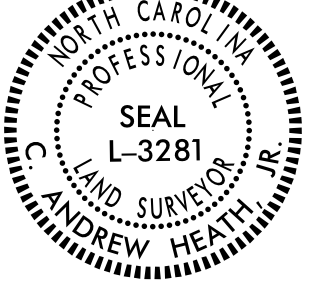
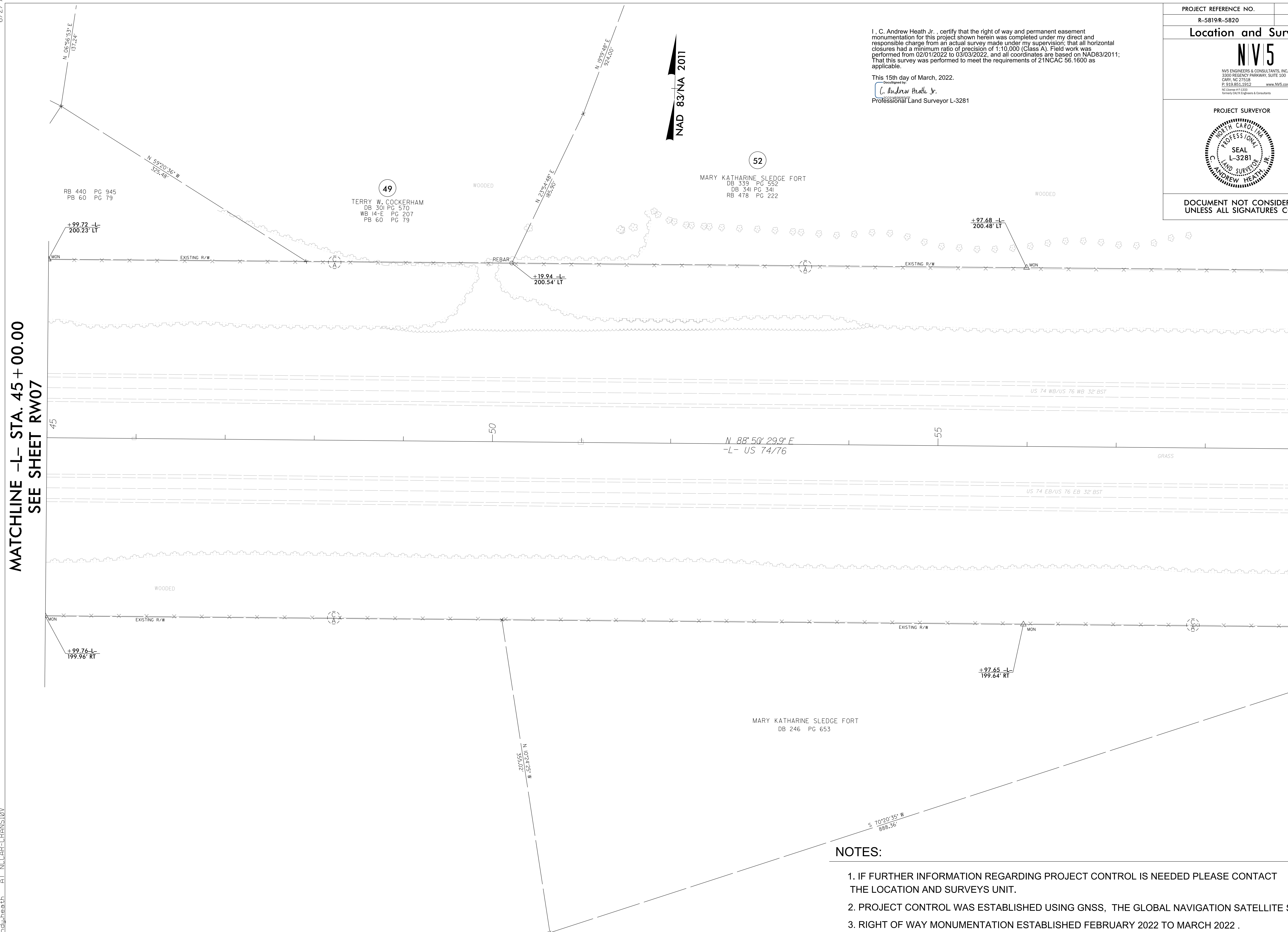


6/2/09

PROJECT REFERENCE NO.	SHEET NO.
R-5819R-5820	RW08
Location and Surveys	
 <small>NV5 ENGINEERS & CONSULTANTS, INC. 3300 REGENCY PARKWAY, SUITE 100 CARR, NC 27519 P: 919.851.1912 www.nv5.com No. License #1333 Services: CIVIL Engineers & Consultants</small>	
PROJECT SURVEYOR	
	
DOCUMENT NOT CONSIDERED FINAL UNLESS ALL SIGNATURES COMPLETED	

I, C. Andrew Heath Jr., certify that the right of way and permanent easement monumentation for this project shown herein was completed under my direct and responsible charge from an actual survey made under my supervision; that all horizontal closures had a minimum ratio of precision of 1:10,000 (Class A). Field work was performed from 02/01/2022 to 03/03/2022, and all coordinates are based on NAD83/2011; That this survey was performed to meet the requirements of 21NCAC 56.1600 as applicable.

This 15th day of March, 2022.
 C. Andrew Heath Jr.
 Professional Land Surveyor L-3281



MATCHLINE -L- STA. 45 + 00.00
SEE SHEET RW07

MATCHLINE -L- STA. 59 + 00.00
SEE SHEET RW09

- NOTES:**
1. IF FURTHER INFORMATION REGARDING PROJECT CONTROL IS NEEDED PLEASE CONTACT THE LOCATION AND SURVEYS UNIT.
 2. PROJECT CONTROL WAS ESTABLISHED USING GNSS, THE GLOBAL NAVIGATION SATELLITE SYSTEM.
 3. RIGHT OF WAY MONUMENTATION ESTABLISHED FEBRUARY 2022 TO MARCH 2022 .

15-MAR-2022 15:35 2021014.B7 SURV.RW_SHEETS-V-5819_+5820_1.s_rw08.dgn
 C:\Users\andyheath\OneDrive\Desktop\AT_NCCAR-CRANSTOV