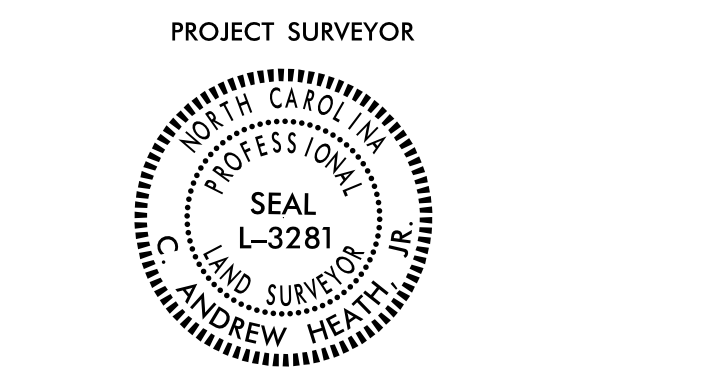


Location and Surveys



DOCUMENT NOT CONSIDERED FINAL UNLESS ALL SIGNATURES COMPLETED

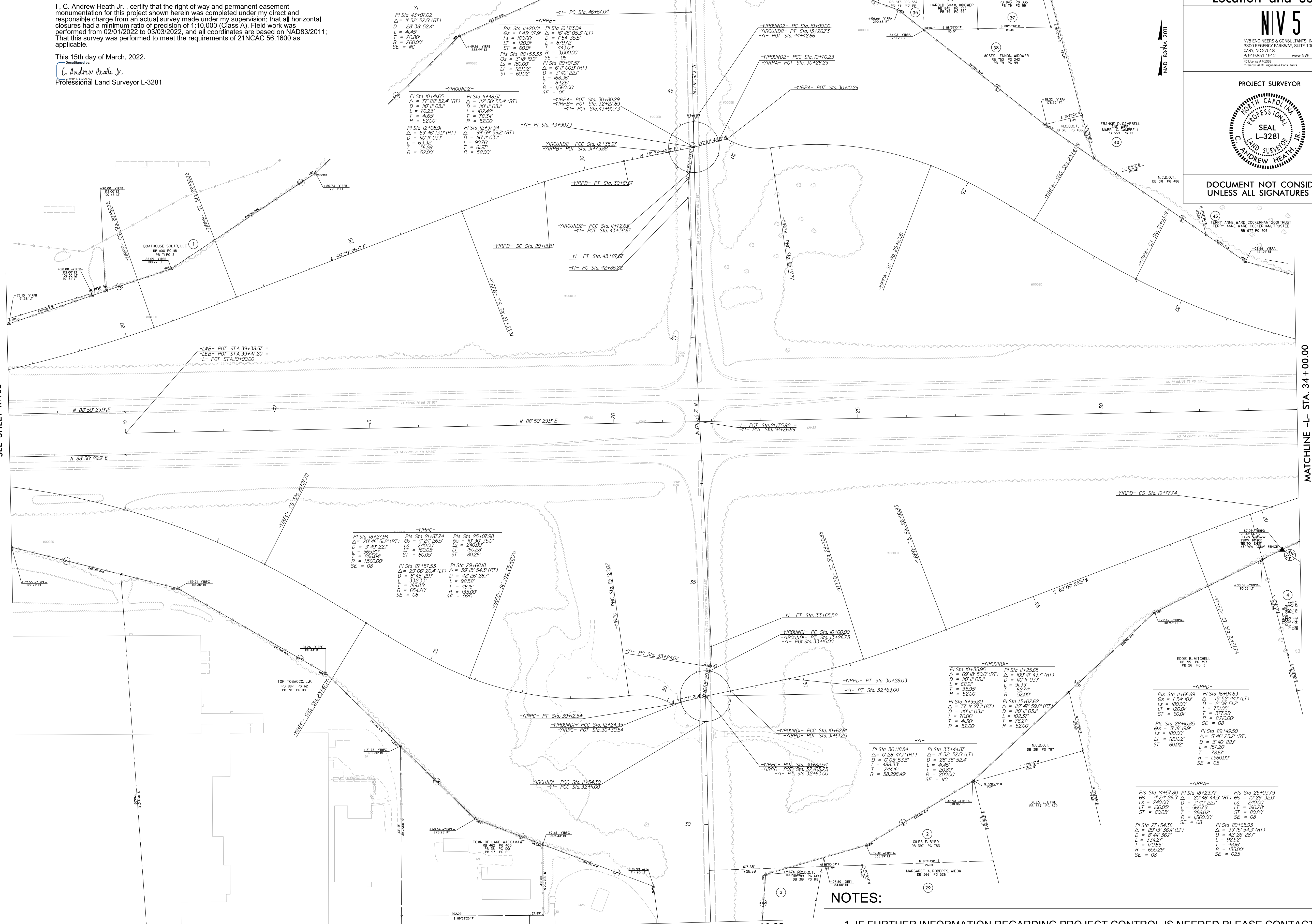
I, C. Andrew Heath Jr., certify that the right of way and permanent easement monumentation for this project shown herein was completed under my direct and responsible charge from an actual survey made under my supervision; that all horizontal closures had a minimum ratio of precision of 1:10,000 (Class A). Field work was performed from 02/01/2022 to 03/03/2022, and all coordinates are based on NAD83/2011; That this survey was performed to meet the requirements of 21NCAC 56.1600 as applicable.

This 15th day of March, 2022. C. Andrew Heath Jr. Professional Land Surveyor L-3281

MATCHLINE -LWB- STA. 37 + 00.00 SEE SHEET RW05

MATCHLINE -YI- STA. 47 + 00.00 SEE SHEET RW15

MATCHLINE -L- STA. 34 + 00.00 SEE SHEET RW07



-YI- PI Sta 43+07.02 Δ = 1°52' 32.5" (RT) D = 28° 58' 52.4" L = 41.45' T = 20.80' R = 200.00' SE = NC

-YIRPB- PI Sta 11+20.01 Δ = 1°43' 07.5" (LT) D = 16° 48' 35.5" (LT) L = 180.00' T = 89.75' R = 600.00' SE = 05

-YIRROUND- PC Sta 10+00.00 Δ = 1°52' 32.5" (RT) D = 28° 58' 52.4" L = 41.45' T = 20.80' R = 200.00' SE = NC

-YIRPB- PI Sta 11+48.57 Δ = 1°52' 32.5" (RT) D = 28° 58' 52.4" L = 41.45' T = 20.80' R = 200.00' SE = NC

-YIRPB- PI Sta 30+80.29 Δ = 1°52' 32.5" (RT) D = 28° 58' 52.4" L = 41.45' T = 20.80' R = 200.00' SE = NC

-YIRPB- PI Sta 30+28.29 Δ = 1°52' 32.5" (RT) D = 28° 58' 52.4" L = 41.45' T = 20.80' R = 200.00' SE = NC

-YIRPB- PI Sta 30+80.29 Δ = 1°52' 32.5" (RT) D = 28° 58' 52.4" L = 41.45' T = 20.80' R = 200.00' SE = NC

-YIRPB- PI Sta 31+75.88 Δ = 1°52' 32.5" (RT) D = 28° 58' 52.4" L = 41.45' T = 20.80' R = 200.00' SE = NC

-YIRPB- PI Sta 30+80.29 Δ = 1°52' 32.5" (RT) D = 28° 58' 52.4" L = 41.45' T = 20.80' R = 200.00' SE = NC

-YIRPB- PI Sta 30+80.29 Δ = 1°52' 32.5" (RT) D = 28° 58' 52.4" L = 41.45' T = 20.80' R = 200.00' SE = NC

-YIRPB- PI Sta 30+80.29 Δ = 1°52' 32.5" (RT) D = 28° 58' 52.4" L = 41.45' T = 20.80' R = 200.00' SE = NC

-YIRPB- PI Sta 30+80.29 Δ = 1°52' 32.5" (RT) D = 28° 58' 52.4" L = 41.45' T = 20.80' R = 200.00' SE = NC

-YIRPC- PI Sta 18+27.94 Δ = 2°07' 46" (RT) D = 3°40' 22.5" L = 565.87' T = 286.00' R = 1260.00' SE = 08

-YIRPC- PI Sta 21+87.74 Δ = 4°24' 26.5" (RT) D = 7°11' 57.1" (RT) L = 240.00' T = 120.00' R = 600.00' SE = 08

-YIRPC- PI Sta 25+07.98 Δ = 1°07' 30.35" (RT) D = 1°52' 32.5" (RT) L = 107.00' T = 53.50' R = 300.00' SE = 05

-YIRPC- PI Sta 27+57.53 Δ = 2°07' 46" (RT) D = 3°40' 22.5" L = 565.87' T = 286.00' R = 1260.00' SE = 08

-YIRPC- PI Sta 29+19.51 Δ = 2°07' 46" (RT) D = 3°40' 22.5" L = 565.87' T = 286.00' R = 1260.00' SE = 08

-YIRPC- PI Sta 29+69.8 Δ = 2°07' 46" (RT) D = 3°40' 22.5" L = 565.87' T = 286.00' R = 1260.00' SE = 08

-YIRPC- PI Sta 30+12.54 Δ = 2°07' 46" (RT) D = 3°40' 22.5" L = 565.87' T = 286.00' R = 1260.00' SE = 08

-YIRPC- PI Sta 30+12.54 Δ = 2°07' 46" (RT) D = 3°40' 22.5" L = 565.87' T = 286.00' R = 1260.00' SE = 08

-YIRPC- PI Sta 30+12.54 Δ = 2°07' 46" (RT) D = 3°40' 22.5" L = 565.87' T = 286.00' R = 1260.00' SE = 08

-YIRPC- PI Sta 30+12.54 Δ = 2°07' 46" (RT) D = 3°40' 22.5" L = 565.87' T = 286.00' R = 1260.00' SE = 08

-YIRPC- PI Sta 30+12.54 Δ = 2°07' 46" (RT) D = 3°40' 22.5" L = 565.87' T = 286.00' R = 1260.00' SE = 08

-YIRPC- PI Sta 30+12.54 Δ = 2°07' 46" (RT) D = 3°40' 22.5" L = 565.87' T = 286.00' R = 1260.00' SE = 08

-YIRPC- PI Sta 30+12.54 Δ = 2°07' 46" (RT) D = 3°40' 22.5" L = 565.87' T = 286.00' R = 1260.00' SE = 08

-YIRPC- PI Sta 30+12.54 Δ = 2°07' 46" (RT) D = 3°40' 22.5" L = 565.87' T = 286.00' R = 1260.00' SE = 08

-YIRPC- PI Sta 30+12.54 Δ = 2°07' 46" (RT) D = 3°40' 22.5" L = 565.87' T = 286.00' R = 1260.00' SE = 08

NOTES:

- 1. IF FURTHER INFORMATION REGARDING PROJECT CONTROL IS NEEDED PLEASE CONTACT THE LOCATION AND SURVEYS UNIT.
2. PROJECT CONTROL WAS ESTABLISHED USING GNSS, THE GLOBAL NAVIGATION SATELLITE SYSTEM.
3. RIGHT OF WAY MONUMENTATION ESTABLISHED FEBRUARY 2022 TO MARCH 2022.