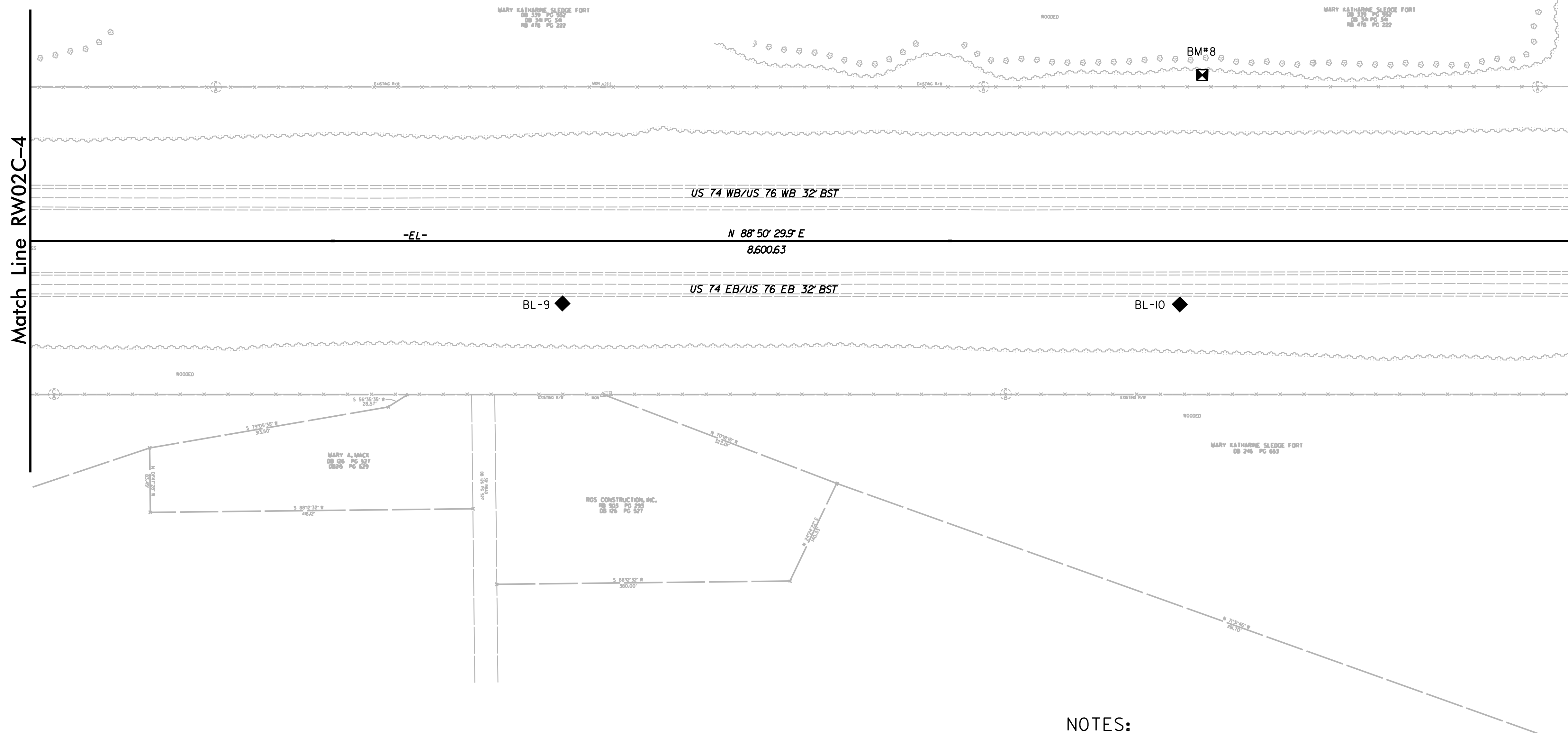
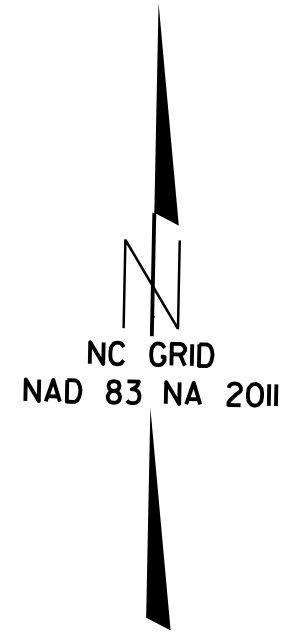


6/2/09

# SURVEY CONTROL SHEET

## W/ EXISTING CENTERLINE ALIGNMENTS PRIOR TO CONSTRUCTION

|                       |           |
|-----------------------|-----------|
| PROJECT REFERENCE NO. | SHEET NO. |
| R-5819R-5820          | RW02C-5   |
| Location and Surveys  |           |
| NCDOT                 |           |



REVISIONS

27-NOV-2018 10:45  
 Z:\control\sheet\5819-r-5820\go pack\work\5819-r-5820\_1s-rw02c-5.dgn  
 willson AT LSD6-299086

### NOTES:

1. PROJECT CONTROL WAS ESTABLISHED USING GNSS, THE GLOBAL NAVIGATION SATELLITE SYSTEM.
2. THE SURVEY CONTROL DATA FOR THIS PROJECT HAS BEEN COMPILED FROM VARIOUS SOURCES. IF FURTHER INFORMATION REGARDING PROJECT CONTROL IS NEEDED, PLEASE CONTACT THE LOCATION AND SURVEYS UNIT.