

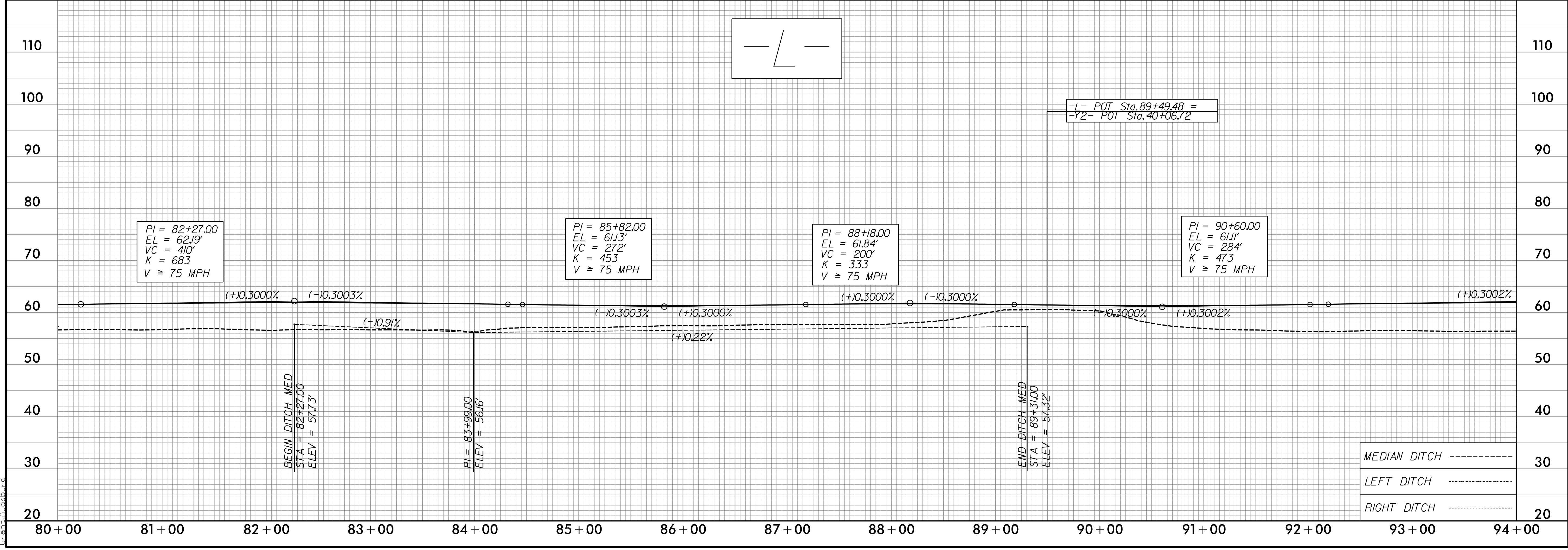
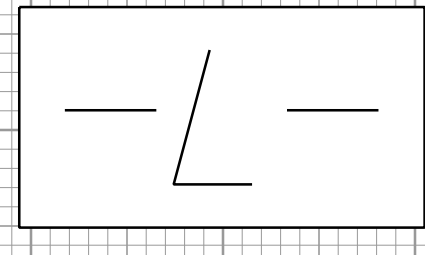
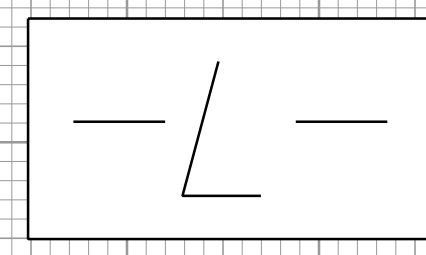
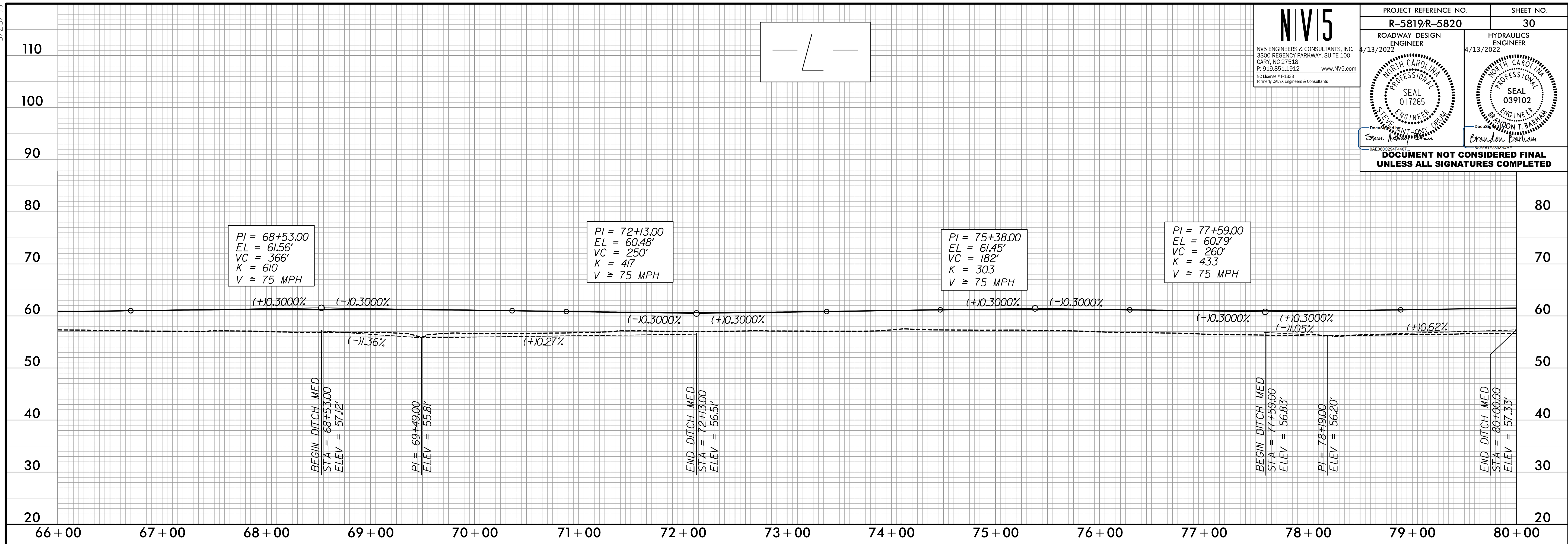
5/28/22

NV5

NV5 ENGINEERS & CONSULTANTS, INC.
3300 REGENCY PARKWAY, SUITE 100
CARY, NC 27518
P: 919.851.1912 www.nv5.com
NC License # E13333
Formerly CALIX Engineers & Consultants

PROJECT REFERENCE NO. R-5819/R-5820	SHEET NO. 30
ROADWAY DESIGN ENGINEER 4/13/2022	HYDRAULICS ENGINEER 4/13/2022
DocuSign Steven Anthony Dorman	DocuSign Brandon T. Barham

**DOCUMENT NOT CONSIDERED FINAL
UNLESS ALL SIGNATURES COMPLETED**



MEDIAN DITCH	-----	30
LEFT DITCH	-----	30
RIGHT DITCH	-----	20

P:\14\2022\Projects\5819\5820\RDY_PFI_30.dgn