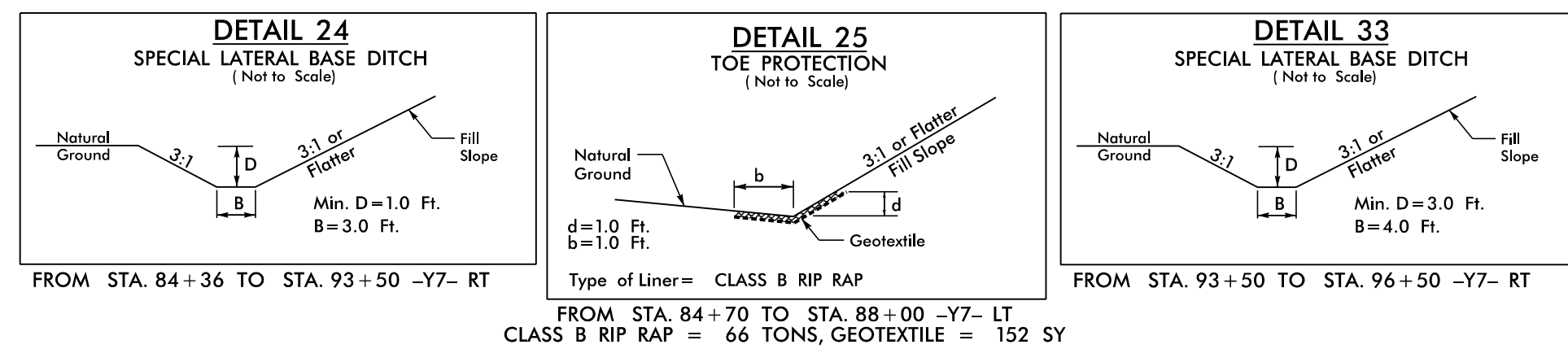
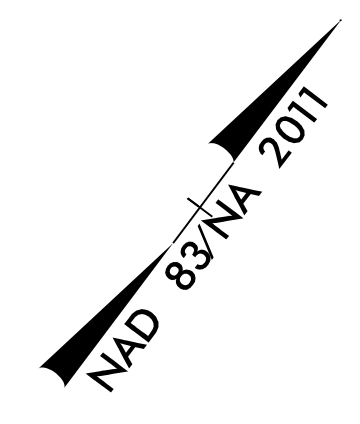


8/17/22

NV5

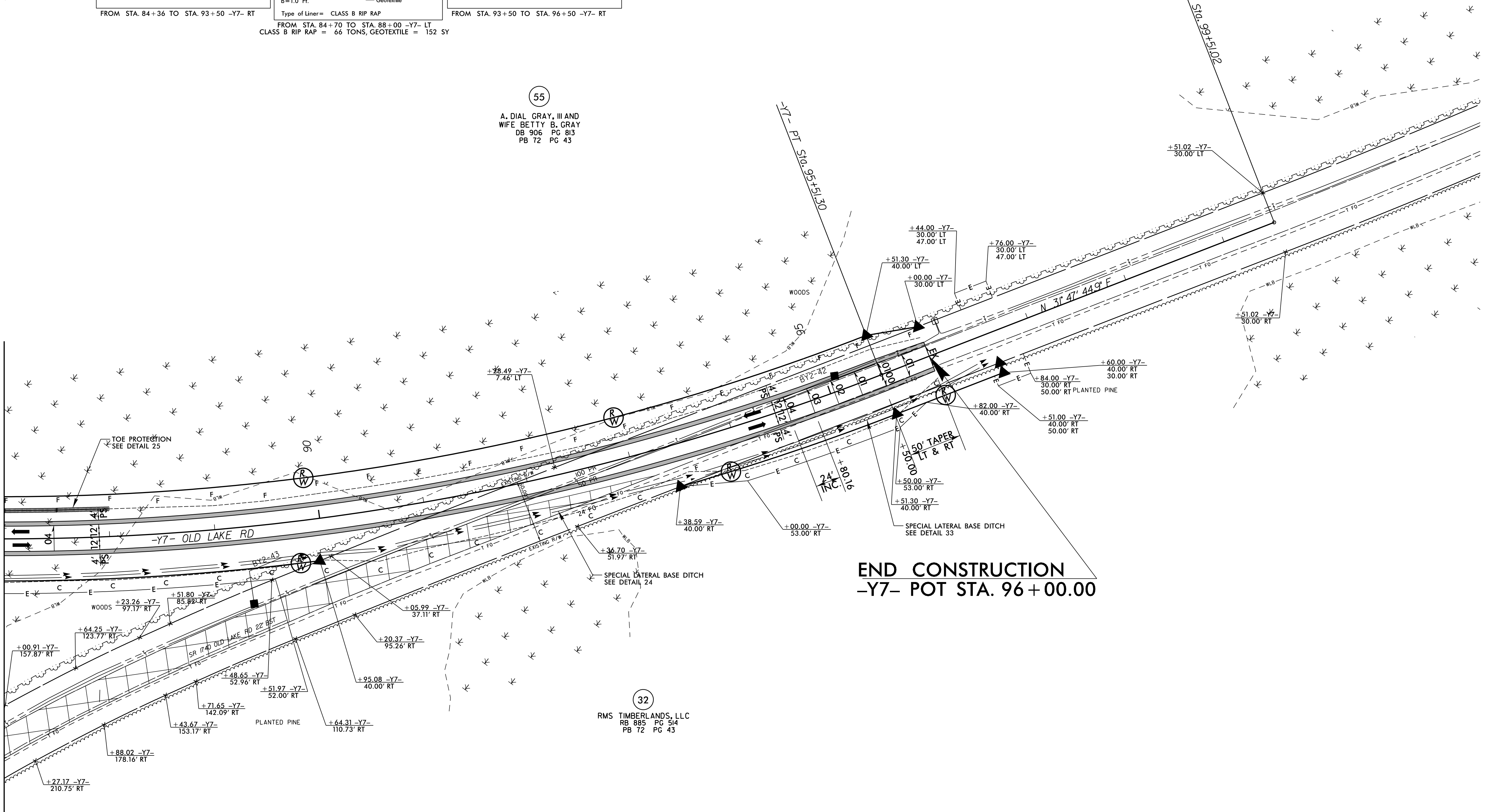
PROJECT REFERENCE NO. R-5819 / R-5820		SHEET NO. 25
RW SHEET NO.		
ROADWAY DESIGN ENGINEER 4/13/2022	HYDRAULICS ENGINEER 4/13/2022	
<p>DOCUMENT NOT CONSIDERED FINAL UNLESS ALL SIGNATURES COMPLETED</p>		

-Y7-
 PI Sta 90+98.48
 $\Delta = 22' 52" 08.1" (LT)$
 $D = 2' 29' 28.0"$
 $L = 918.02'$
 $T = 465.20'$
 $R = 2,300.00'$
 $SE = 04$



55
 A. DIAL GRAY, III AND
 WIFE BETTY B. GRAY
 DB 906 PG 813
 PB 72 PG 43

MATCH LINE -Y7- STA 87+00.00
 SEE SHEET 19



END CONSTRUCTION
 -Y7- POT STA. 96+00.00

32
 RMS TIMBERLANDS, LLC
 RB 885 PG 514
 PB 72 PG 43

NOTES:
 PROP PAVED SHOULDER
 PAVEMENT REMOVAL
 FOR -Y7- PROFILE, SEE SHEET 38

4/16/2022
 R:\Projects\N\5819_R5820_RDY_PSH25.dgn
 E:\Users\m...
 8/17/22