

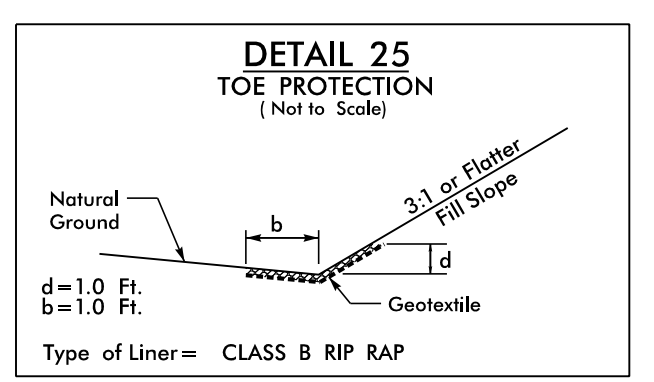
NV5
 NV5 ENGINEERS & CONSULTANTS, INC.
 3300 REGENCY PARKWAY, SUITE 100
 CARY, NC 27518
 P: 919.851.1912 www.NV5.com
 NC License # F-1333
 formerly CALYX Engineers & Consultants

PROJECT REFERENCE NO. R-5819 /R-5820	SHEET NO. 24
RW SHEET NO. ROADWAY DESIGN ENGINEER 4/13/2022	HYDRAULICS ENGINEER 4/13/2022

SEAL 017265
 STEVE HATHORN
 CIVIL ENGINEER

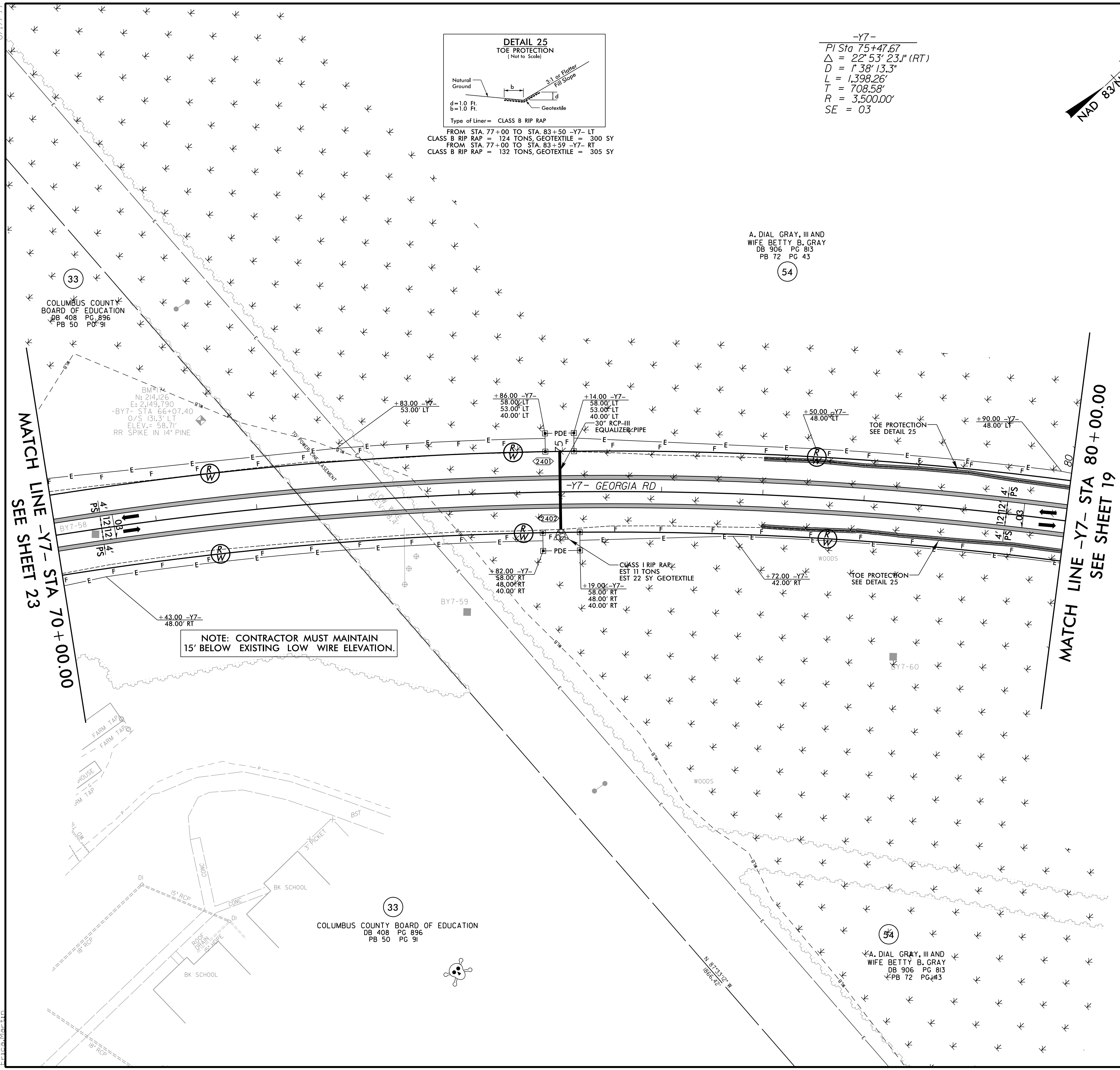
SEAL 039102
 BRANDON T. BARRAM
 CIVIL ENGINEER

**DOCUMENT NOT CONSIDERED FINAL
 UNLESS ALL SIGNATURES COMPLETED**



FROM STA. 77+00 TO STA. 83+50 -Y7- LT
 CLASS B RIP RAP = 124 TONS, GEOTEXTILE = 300 SY
 FROM STA. 77+00 TO STA. 83+59 -Y7- RT
 CLASS B RIP RAP = 132 TONS, GEOTEXTILE = 305 SY

-Y7-
 PI Sta 75+47.67
 $\Delta = 22^{\circ}53'23.1''$ (RT)
 $D = 1'38'13.3''$
 $L = 1,398.26'$
 $R = 708.58'$
 $SE = 03$



NOTE: CONTRACTOR MUST MAINTAIN
 15' BELOW EXISTING LOW WIRE ELEVATION.

4/16/2022
 R:\Projects\N\5819_R5820_RDY_PSH24.dgn
 E:\CADD\N\5819_R5820_RDY_PSH24.dgn

NOTES:
 ■ PROP PAVED SHOULDER
 FOR -Y7- PROFILE, SEE SHEET 37