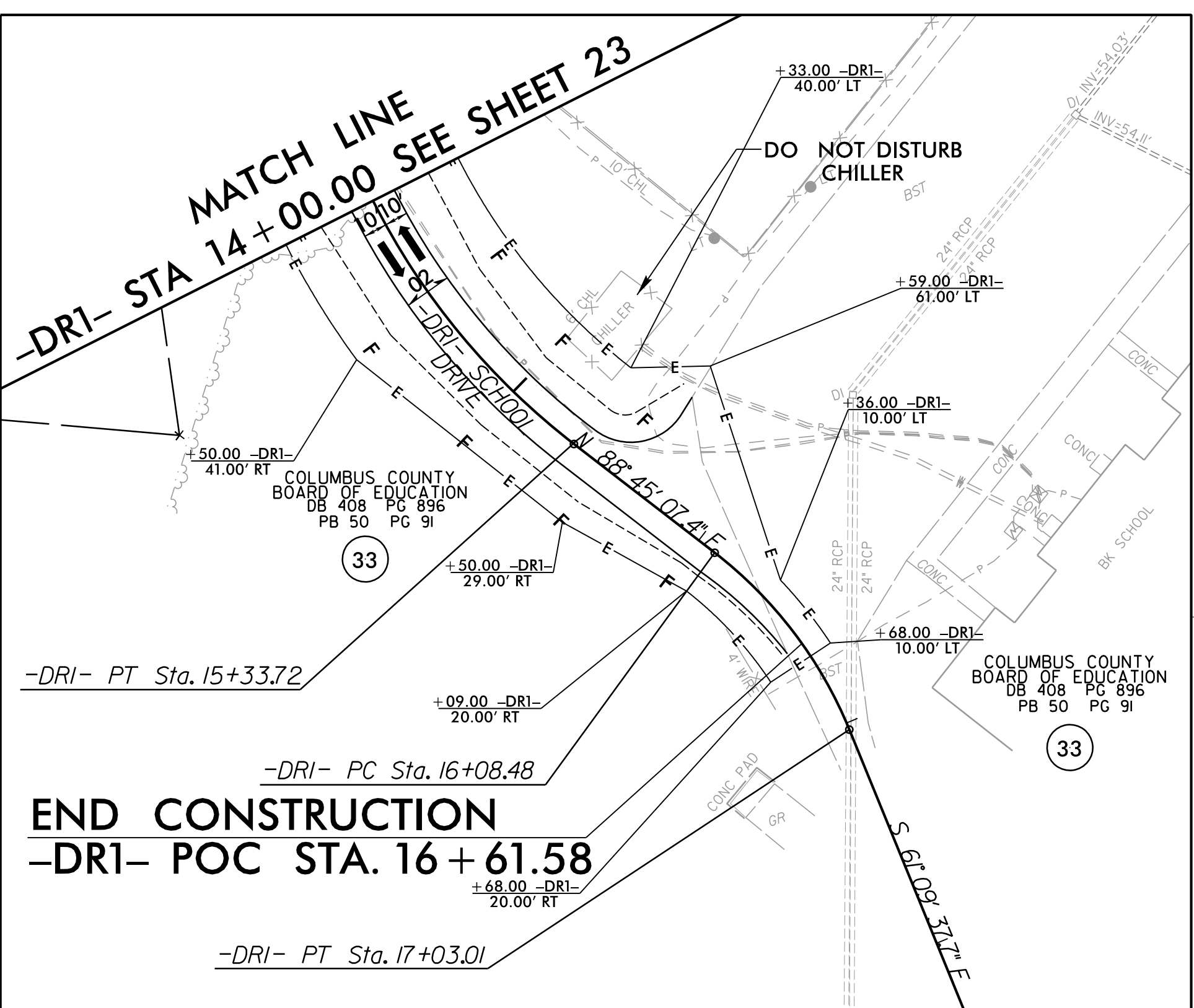
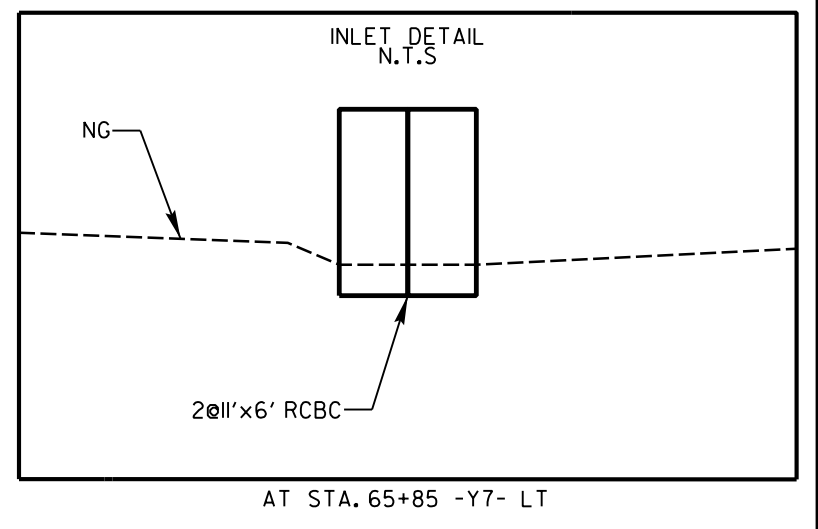
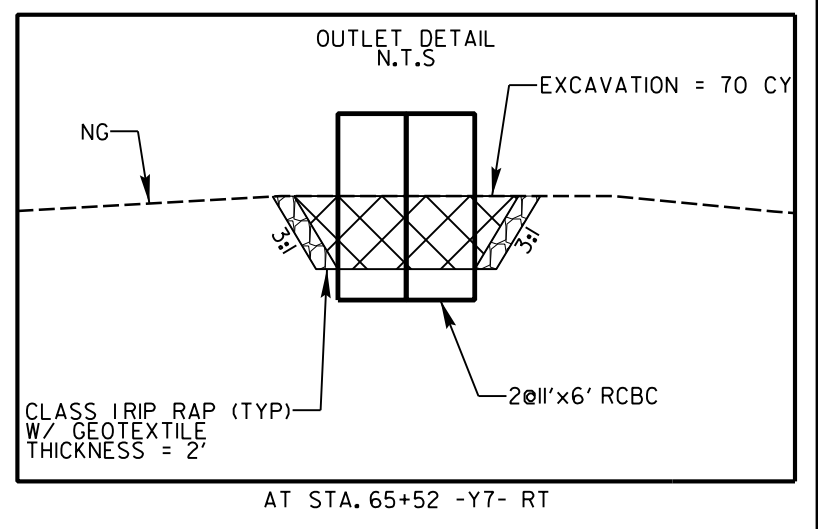
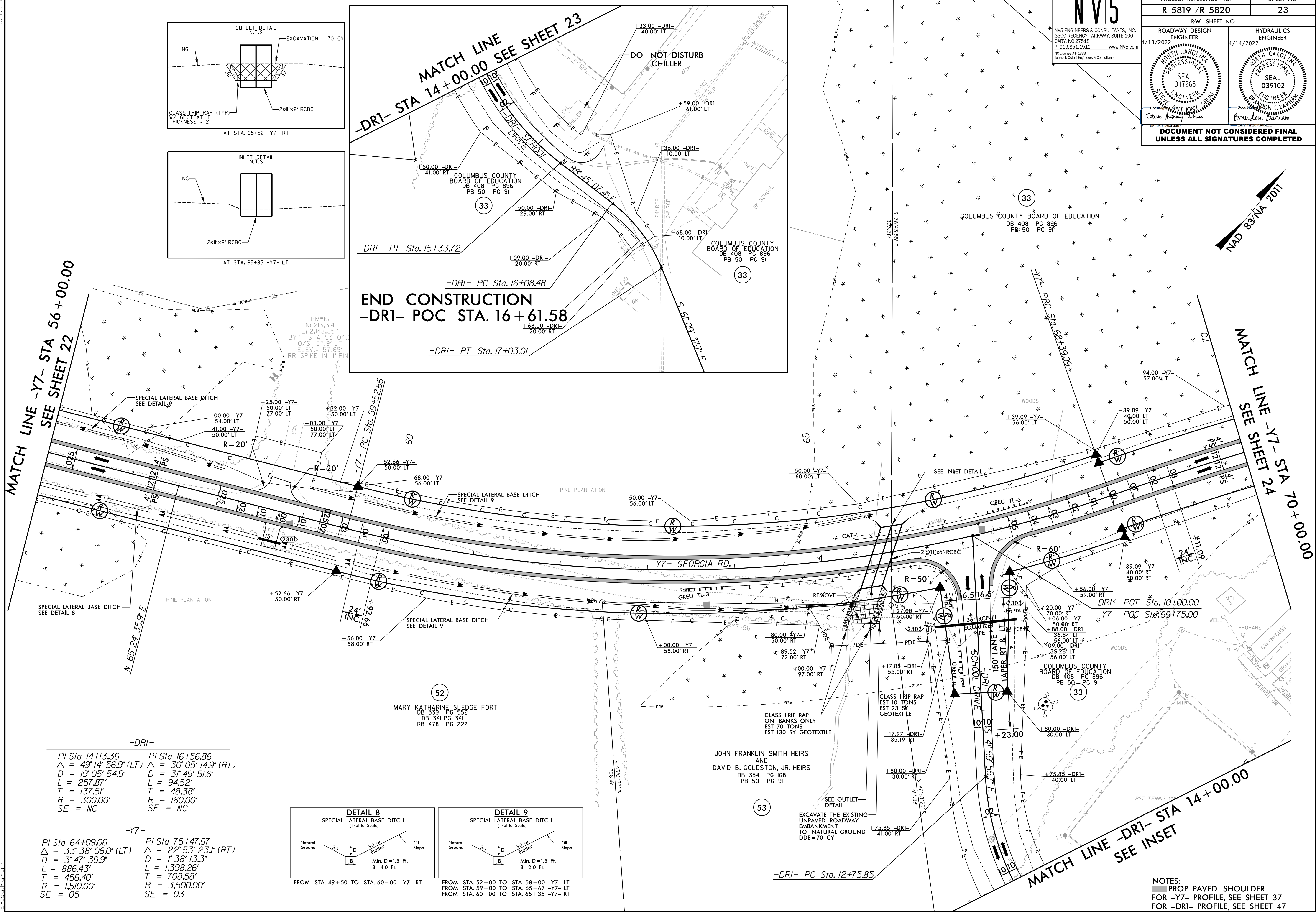


8/17/99

# NV5

PROJECT REFERENCE NO. <b>R-5819 / R-5820</b>		SHEET NO. <b>23</b>
RW SHEET NO.		
ROADWAY DESIGN ENGINEER 4/13/2022	HYDRAULICS ENGINEER 4/14/2022	
DOCUMENT NOT CONSIDERED FINAL UNLESS ALL SIGNATURES COMPLETED		



**END CONSTRUCTION**  
-DRI- POC STA. 16+61.58

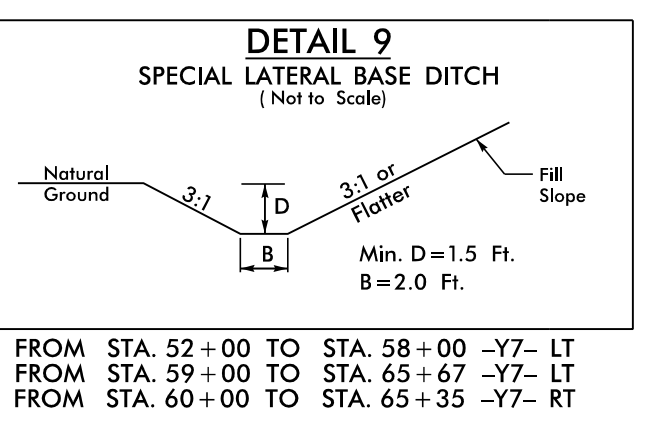
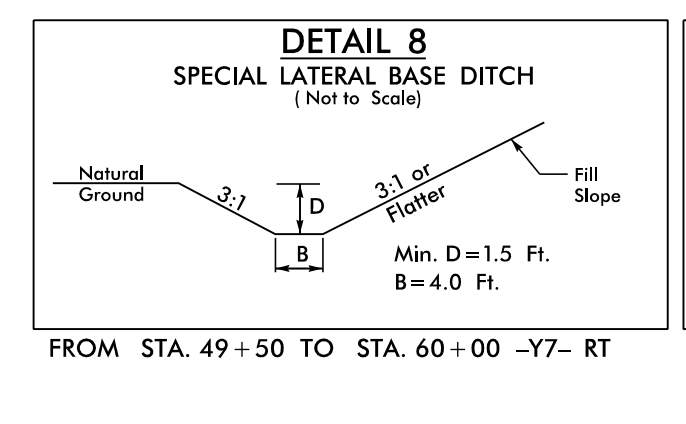
MATCH LINE -Y7- STA 56+00.00  
SEE SHEET 22

MATCH LINE -Y7- STA 70+00.00  
SEE SHEET 24

-DRI-	
PI Sta 14+13.36	PI Sta 16+56.86
$\Delta = 49^{\circ} 14' 56.9''$ (LT)	$\Delta = 30^{\circ} 05' 14.9''$ (RT)
D = 19' 05' 54.9"	D = 31' 49' 51.6"
L = 257.87'	L = 94.52'
T = 137.51'	T = 48.38'
R = 300.00'	R = 180.00'
SE = NC	SE = NC

-Y7-	
PI Sta 64+09.06	PI Sta 75+47.67
$\Delta = 33^{\circ} 38' 06.0''$ (LT)	$\Delta = 22^{\circ} 53' 23.1''$ (RT)
D = 3' 47' 39.9"	D = 1' 38' 13.3"
L = 886.43'	L = 1,398.26'
T = 456.40'	T = 708.58'
R = 1,510.00'	R = 3,500.00'
SE = 05	SE = 03



NOTES:  
 ■ PROP PAVED SHOULDER  
 ■ FOR -Y7- PROFILE, SEE SHEET 37  
 ■ FOR -DRI- PROFILE, SEE SHEET 47

4/13/2022  
 R:\Projects\2022\Projects\5819\_R5820\RDY\_PSH23.dgn  
 E:\Users\mfranklin