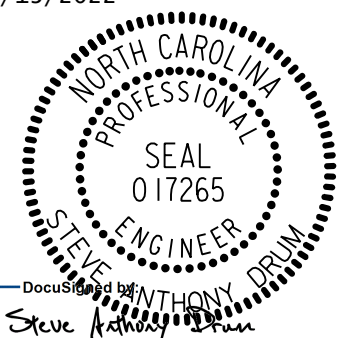

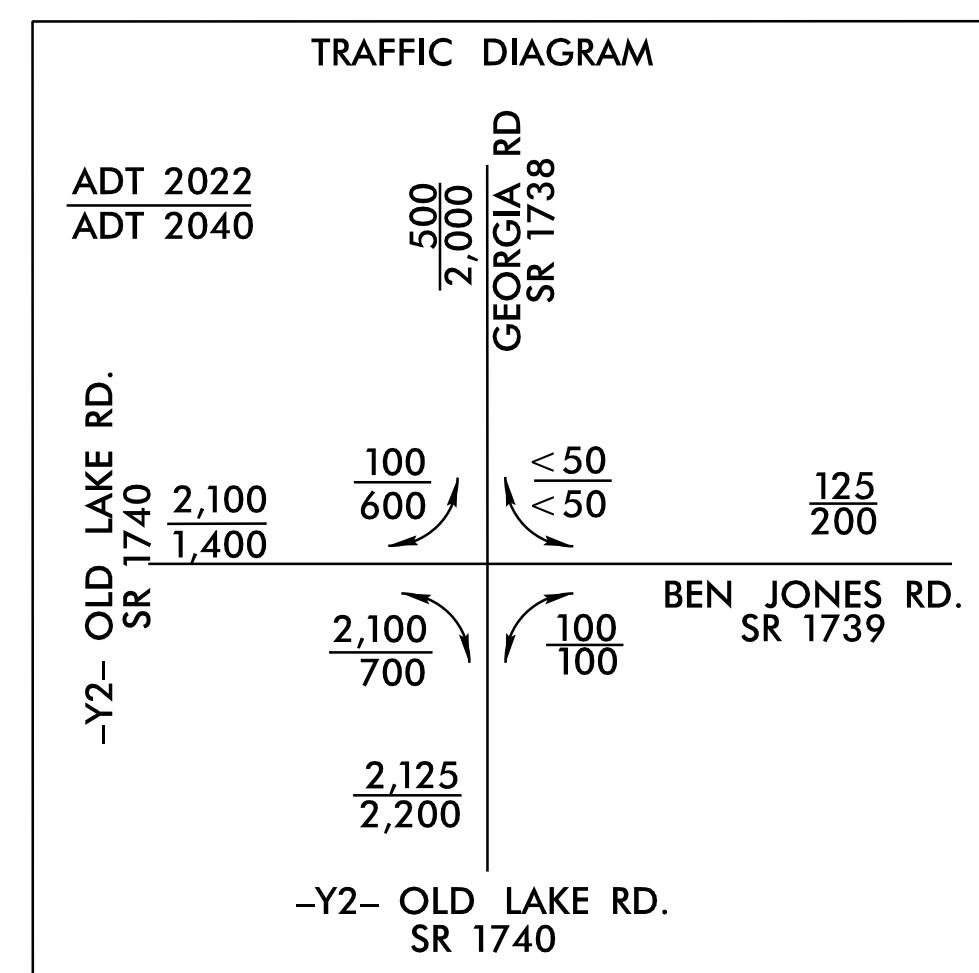


8/17/19

NV5

NV5 ENGINEERS & CONSULTANTS, INC.
3300 REGENCY PARKWAY, SUITE 100
CARY, NC 27518
P: 919.851.1912 www.NV5.com
NC License # 013352
Formerly CALXX Engineers & Consultants

PROJECT REFERENCE NO. R-5819 /R-5820		SHEET NO. 19	
RW SHEET NO.			
ROADWAY DESIGN ENGINEER 4/13/2022		HYDRAULICS ENGINEER 4/13/2022	
			
DOCUMENT NOT CONSIDERED FINAL UNLESS ALL SIGNATURES COMPLETED			



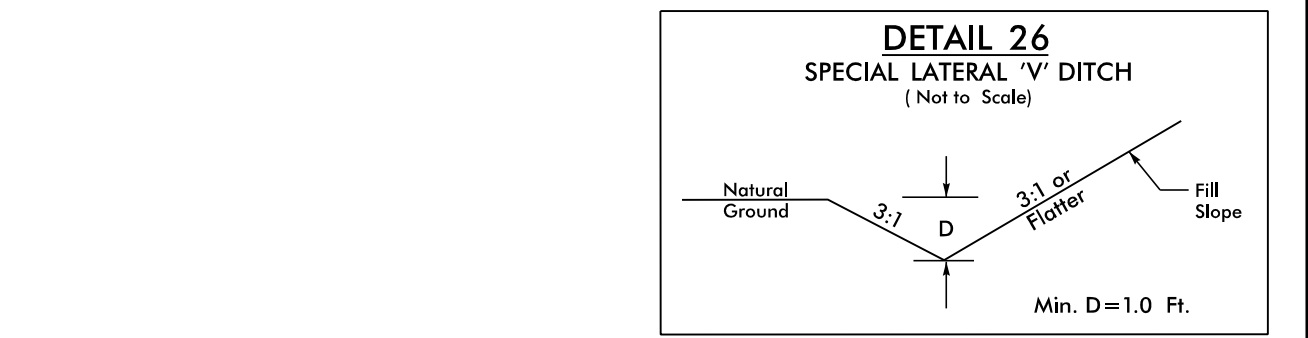
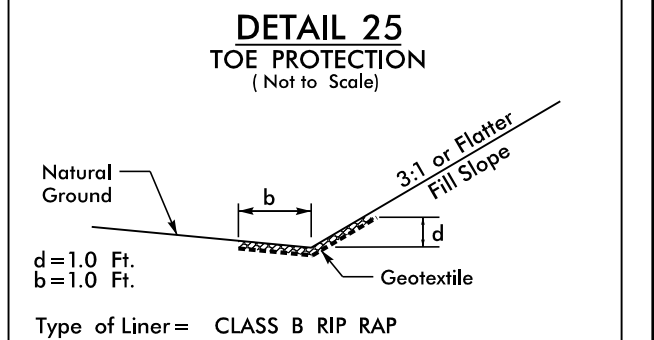
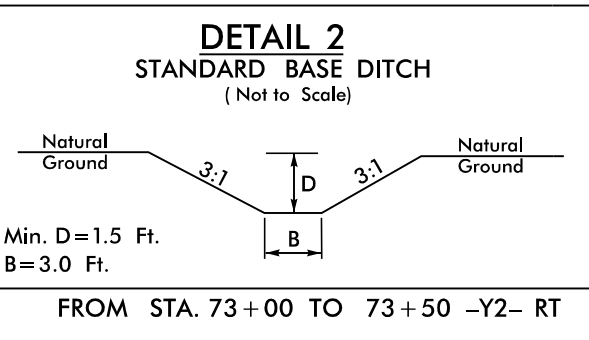
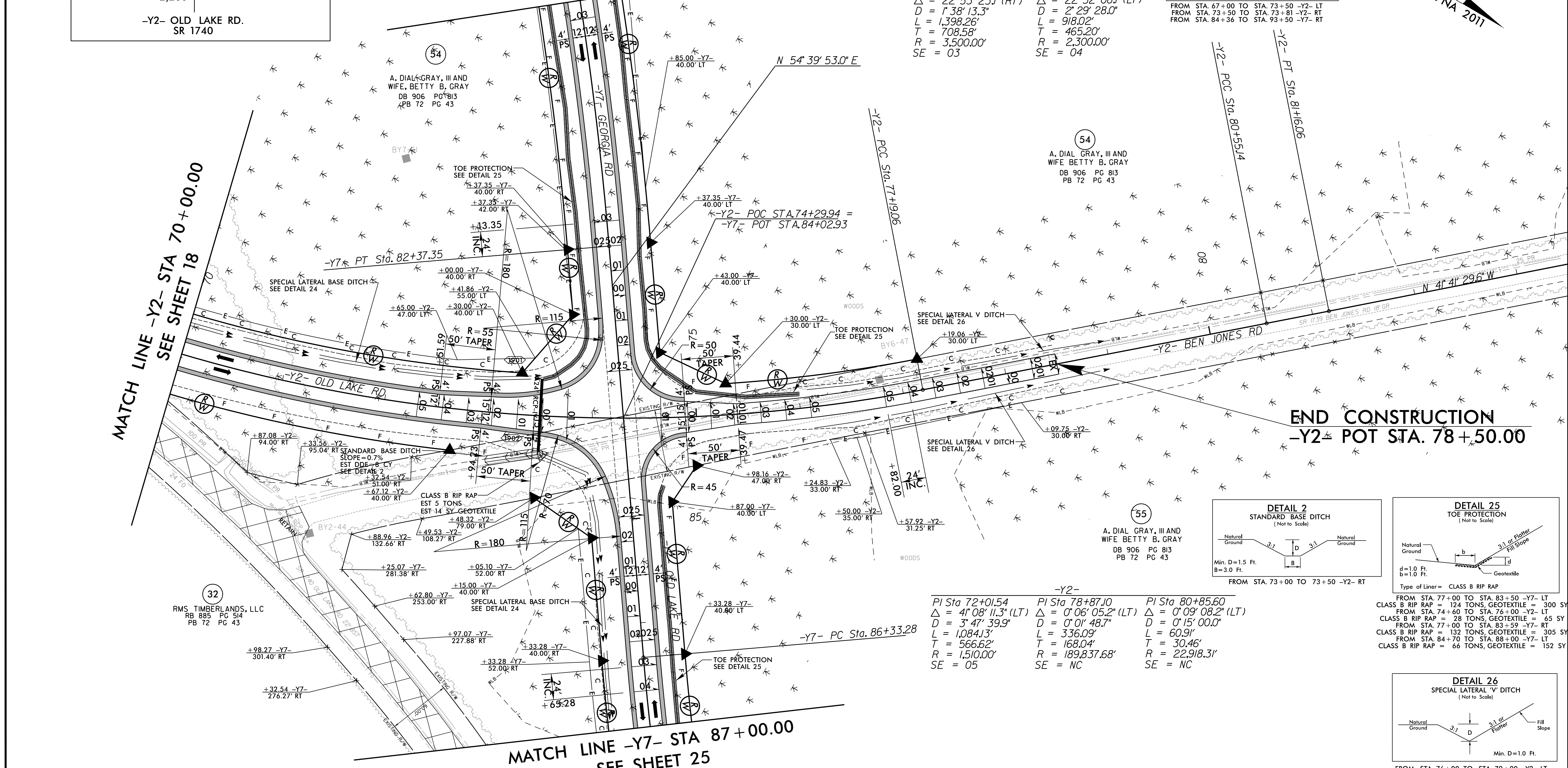
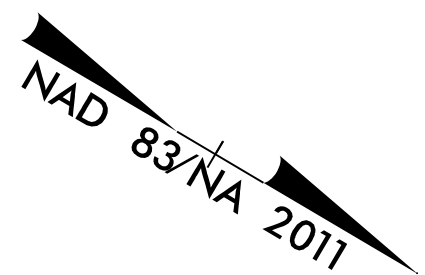
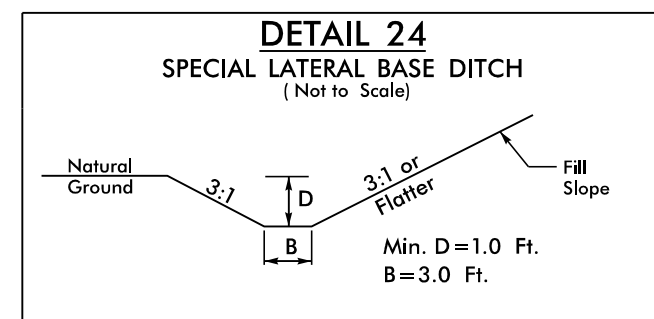
MATCH LINE -Y7- STA 80+00.00
SEE SHEET 24

MATCH LINE -Y2- STA 70+00.00
SEE SHEET 18

MATCH LINE -Y7- STA 87+00.00
SEE SHEET 25

-Y7-

PI Sta 75+47.67 $\Delta = 22^\circ 53' 23.1''$ (RT) D = 1,388.13.3' L = 1,398.26' T = 708.58' R = 3,500.00' SE = 03	PI Sta 90+98.48 $\Delta = 22^\circ 52' 08.1''$ (LT) D = 2,297.28.0' L = 918.02' T = 465.20' R = 2,300.00' SE = 04
---	---



-Y2-

PI Sta 72+01.54 $\Delta = 41^\circ 08' 11.3''$ (LT) D = 3,477.39.9' L = 1,084.13' T = 566.62' R = 1,510.00' SE = 05	PI Sta 78+87.10 $\Delta = 0^\circ 06' 05.2''$ (LT) D = 0' 01' 48.7" L = 336.09' T = 168.04' R = 189,837.68' SE = NC	PI Sta 80+85.60 $\Delta = 0^\circ 09' 08.2''$ (LT) D = 0' 15' 00.0" L = 60.91' T = 30.46' R = 22,918.31' SE = NC
---	---	--

NOTES:

- PROP PAVED SHOULDER
- PAVEMENT REMOVAL
- FOR -Y2- PROFILE, SEE SHEET 34 & 35
- FOR -Y7- PROFILE, SEE SHEET 38

4/6/2022
5:19:20 PM
C:\Users\N\OneDrive\Projects\N5819_R5820_RDY_PSH19.dgn
E:\Projects\N5819_R5820_RDY_PSH19.dgn