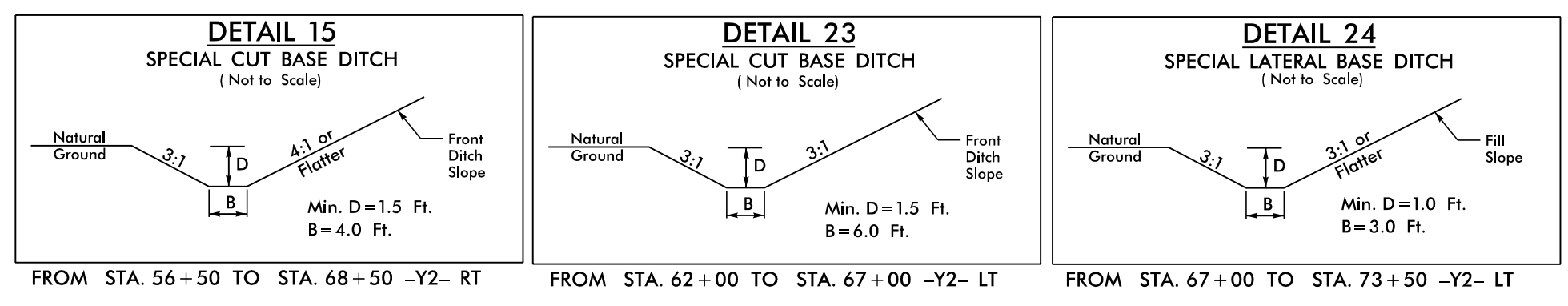
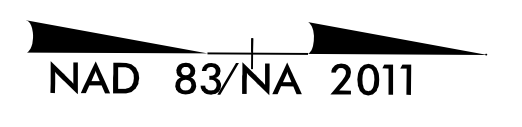


8.17/199



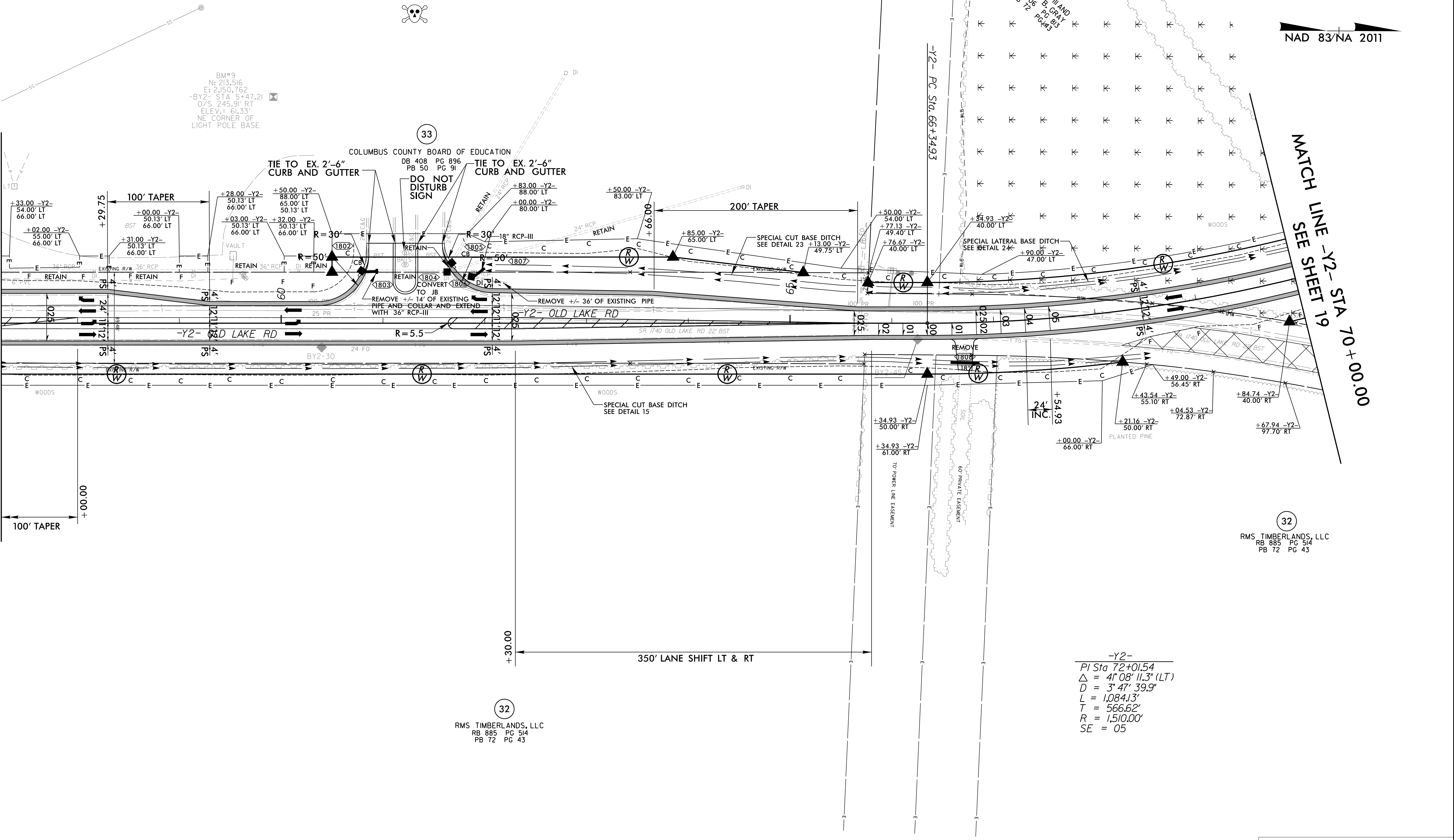
NV5
 NV5 ENGINEERS & CONSULTANTS, INC.
 3300 REGENCY PARKWAY, SUITE 100
 CARY, NC 27518
 P: 919.851.1312 www.NV5.com
 NC License # F-1333
 Formerly CALYX Engineers & Consultants

PROJECT REFERENCE NO. R-5819 / R-5820	SHEET NO. 18
RW SHEET NO.	
ROADWAY DESIGN ENGINEER 4/13/2022	HYDRAULICS ENGINEER 4/13/2022
 Steve R. Thompson PROFESSIONAL ENGINEER SEAL 017265 STATE OF NORTH CAROLINA	 Brandon T. Barham PROFESSIONAL ENGINEER SEAL 039102 STATE OF NORTH CAROLINA
DOCUMENT NOT CONSIDERED FINAL UNLESS ALL SIGNATURES COMPLETED	



MATCH LINE -Y2- STA 57 + 25.00
SEE SHEET 17

MATCH LINE -Y2- STA 70 + 00.00
SEE SHEET 19



(32)
 RMS TIMBERLANDS, LLC
 RB 885 PG 514
 PB 72 PG 43

-Y2-
 PI Sta 72+01.54
 $\Delta = 41^{\circ} 08' 11.3''$ (LT)
 $D = 3^{\circ} 47' 39.9''$
 $L = 1,084.13'$
 $T = 566.62'$
 $R = 1,510.00'$
 $SE = 05$

NOTES:

 FOR -Y2- PROFILE, SEE SHEET 34

4/14/2022
 R:\Projects\Proj\N5819_R5820_RDY_PSH18.dgn
 E:\c\m\m