

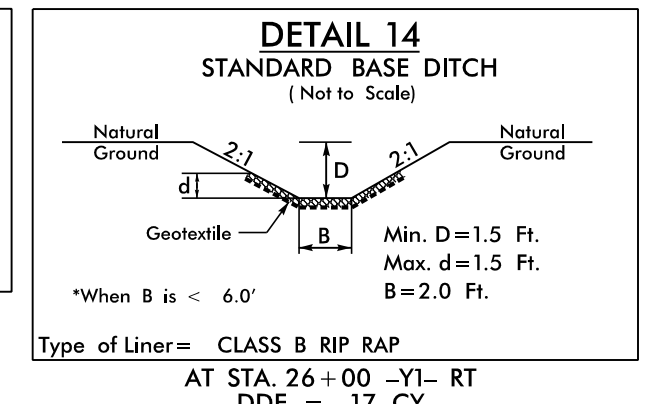
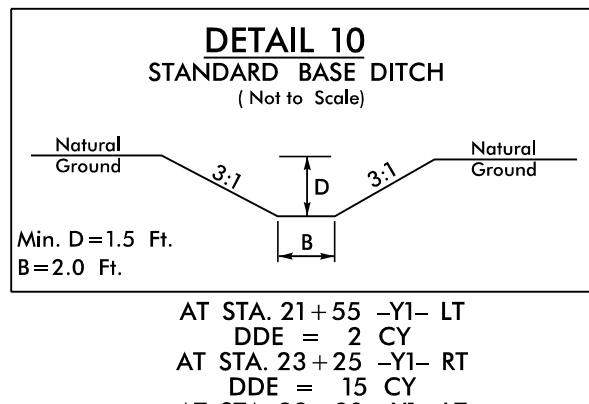
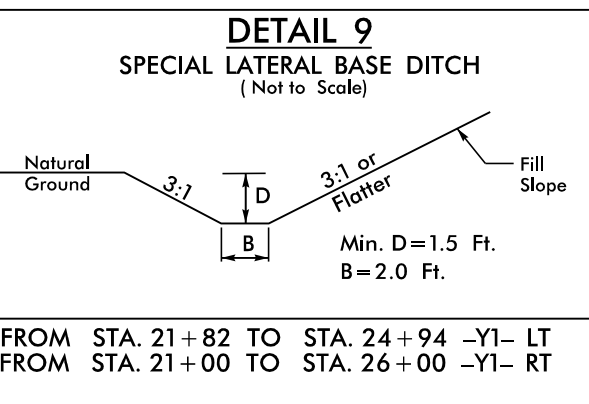
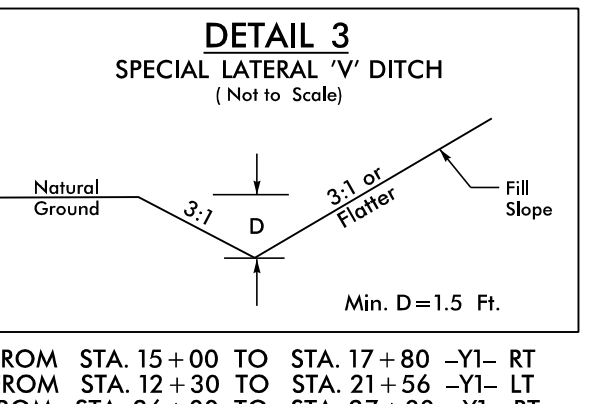
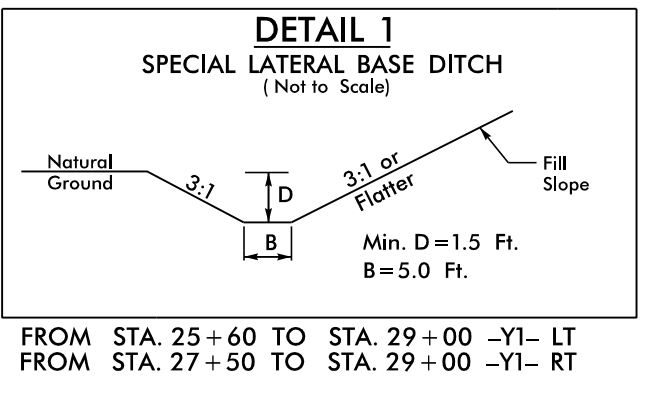
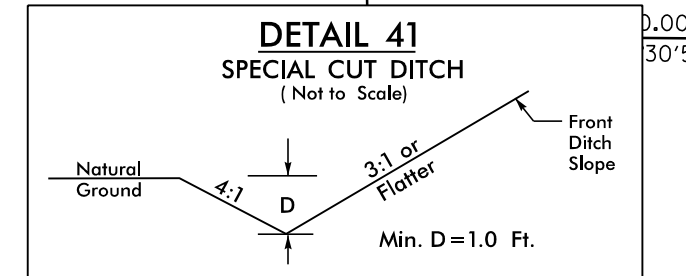
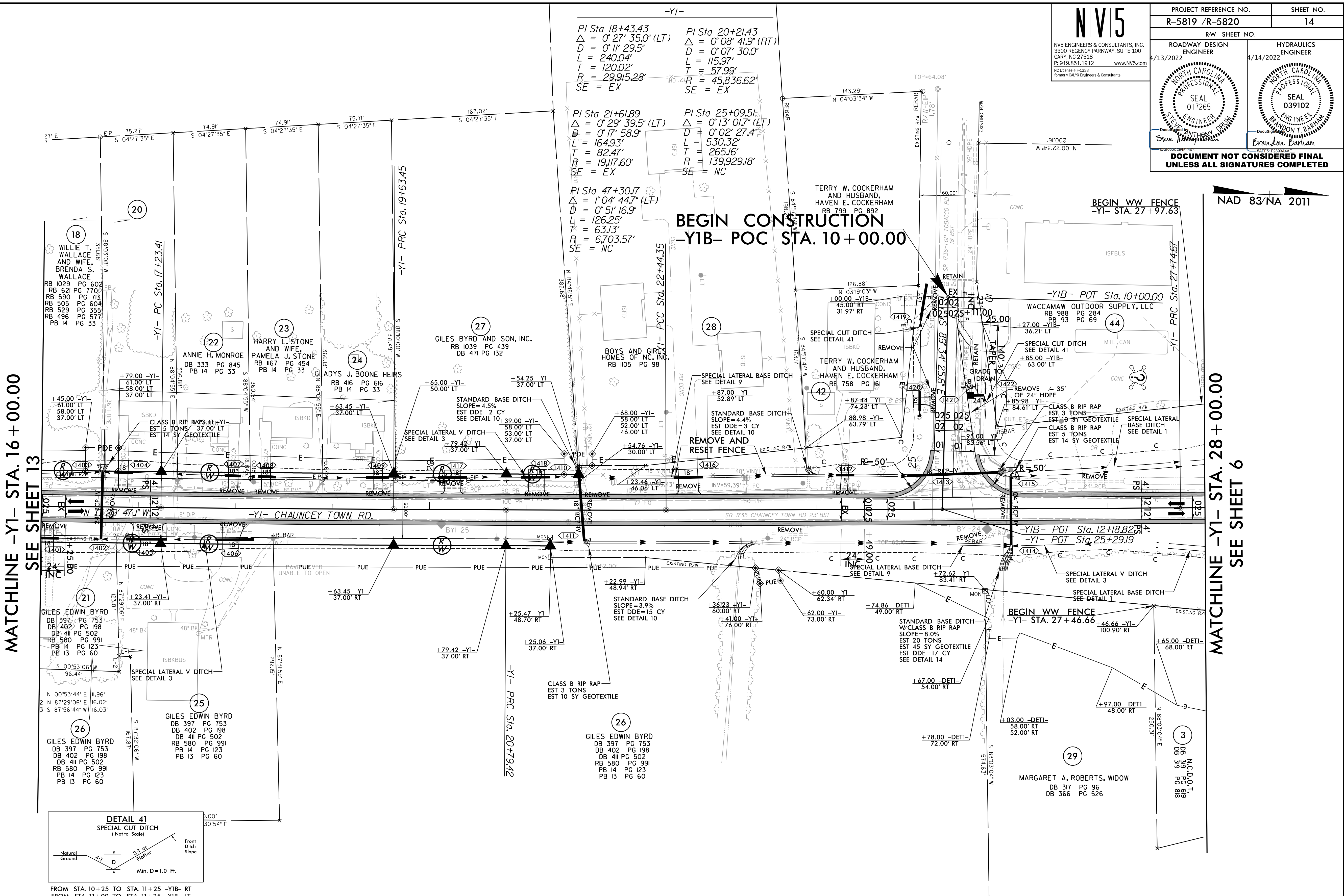
8.17.7.99

NV5
 NV5 ENGINEERS & CONSULTANTS, INC.
 3300 REGENCY PARKWAY, SUITE 100
 CARY, NC 27518
 P: 919.851.1912 www.NV5.com
 NC License # F1333
 Formerly CALYX Engineers & Consultants

PROJECT REFERENCE NO. R-5819 / R-5820	SHEET NO. 14
RW SHEET NO.	
ROADWAY DESIGN ENGINEER 4/13/2022	HYDRAULICS ENGINEER 4/14/2022

Seal: **STEVE R. HATHORN**, PROFESSIONAL ENGINEER, SEAL 017265
 Seal: **BRANDON T. BARRAM**, PROFESSIONAL ENGINEER, SEAL 039102

DOCUMENT NOT CONSIDERED FINAL UNLESS ALL SIGNATURES COMPLETED



NOTES:
 ALL DRIVEWAY RADII ARE 5' UNLESS OTHERWISE NOTED
 PROP PAVED SHOULDER
 FOR -Y1- PROFILE, SEE SHEET 31 & 32
 FOR -Y1B- PROFILE, SEE SHEET 47

4/13/2022
 R:\Projects\N5819_R5820_RDY_PSH14.dgn
 E:\Projects\N5819_R5820_RDY_PSH14.dgn