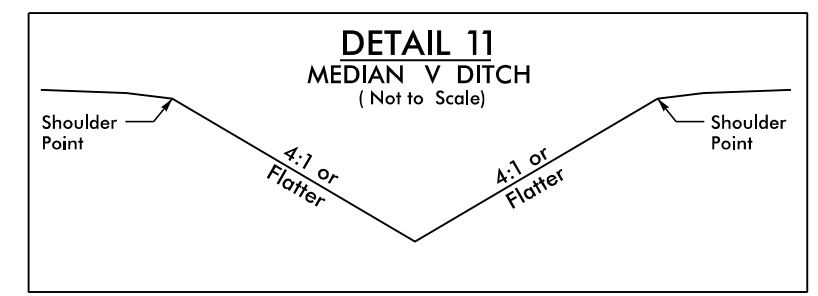


8/17/99

NV5

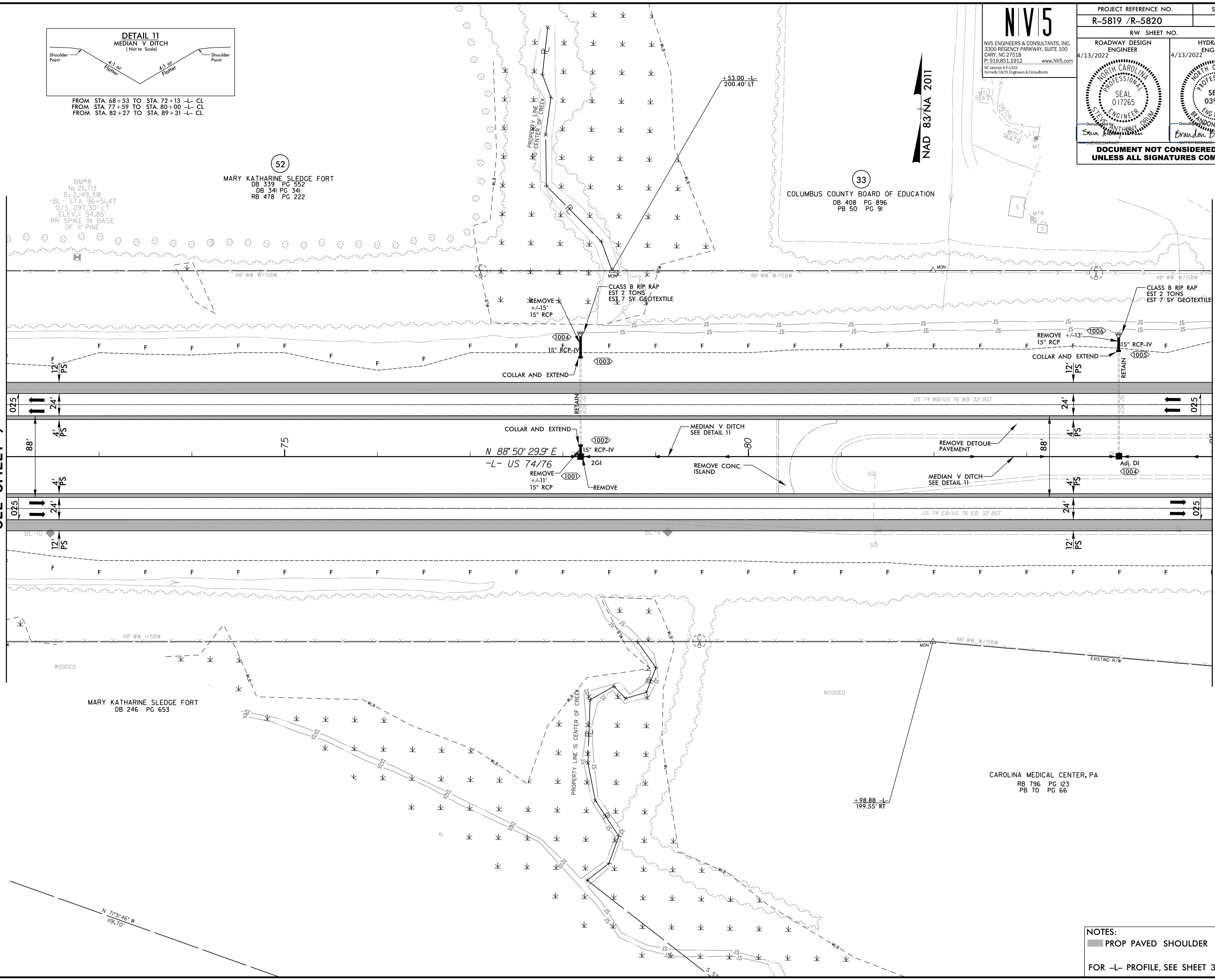
PROJECT REFERENCE NO. R-5819 / R-5820		SHEET NO. 10	
RW SHEET NO.		HYDRAULICS ENGINEER	
ROADWAY DESIGN ENGINEER 4/13/2022		HYDRAULICS ENGINEER 4/13/2022	
DOCUMENT NOT CONSIDERED FINAL UNLESS ALL SIGNATURES COMPLETED			



FROM STA. 68+53 TO STA. 72+13 -L- CL
 FROM STA. 77+59 TO STA. 80+00 -L- CL
 FROM STA. 82+27 TO STA. 89+31 -L- CL

MATCHLINE -L- STA. 72 + 00.00
SEE SHEET 9

MATCHLINE -L- STA. 85 + 00.00
SEE SHEET 11



NOTES:
 PROP PAVED SHOULDER
 FOR -L- PROFILE, SEE SHEET 30

2/15/2022
 R:\Projects\NVR5819_R5820_RDY_PSH10.dgn
 C:\Users\bradham\OneDrive\Documents