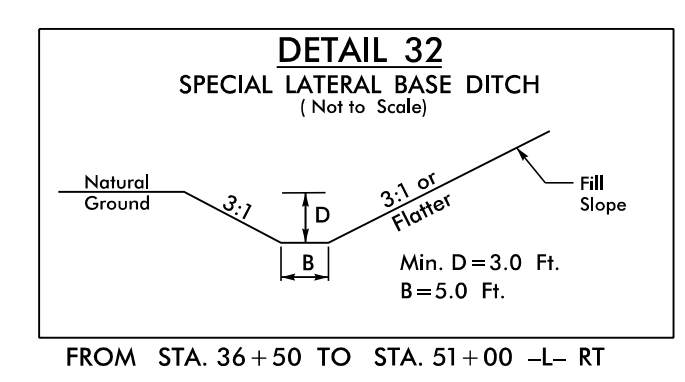


8.17.17.99

NV15

PROJECT REFERENCE NO. R-5819 /R-5820		SHEET NO. 8
RW SHEET NO.		
ROADWAY DESIGN ENGINEER 4/13/2022	HYDRAULICS ENGINEER 4/13/2022	
<p><b>DOCUMENT NOT CONSIDERED FINAL UNLESS ALL SIGNATURES COMPLETED</b></p>		

NAD 83/NA 2011



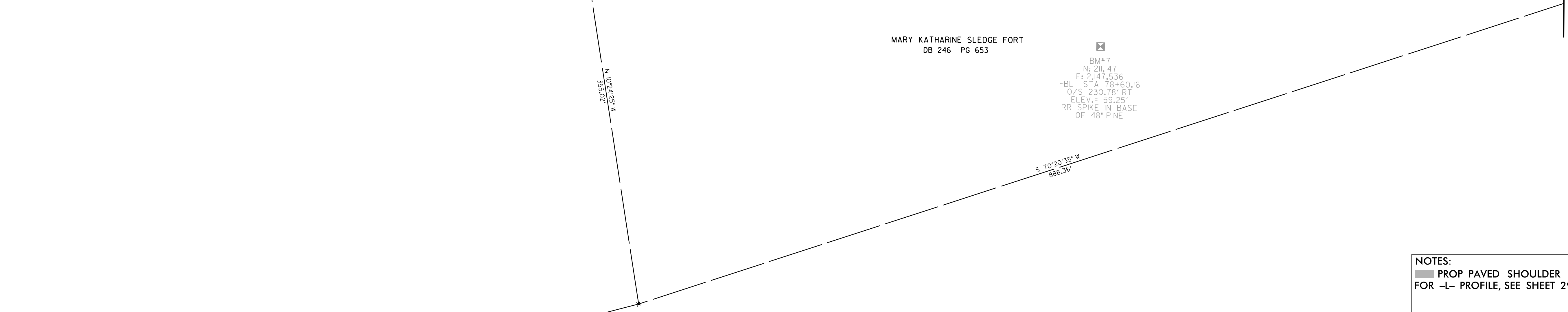
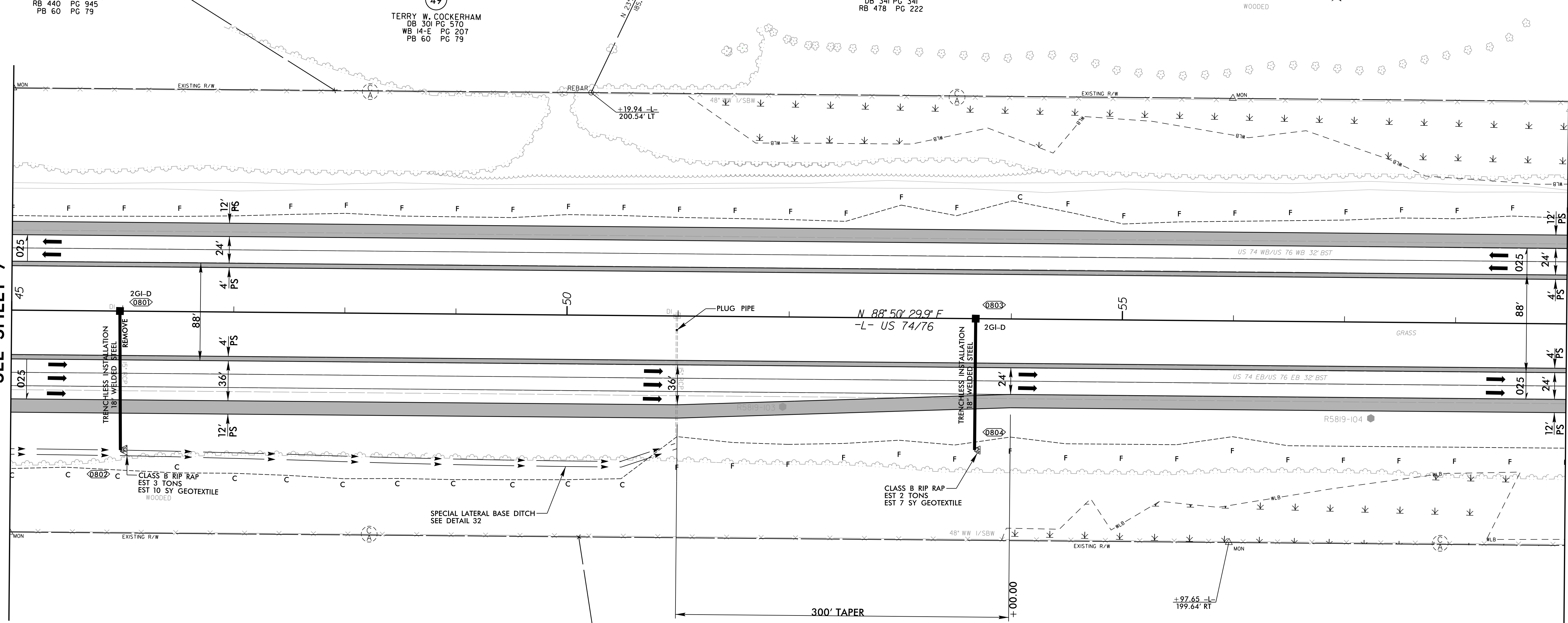
WILES BYRD AND SON, INC.  
RB 440 PG 945  
PB 60 PG 79

49  
TERRY W. COCKERHAM  
DB 301 PG 570  
WB 14-E PG 207  
PB 60 PG 79

52  
MARY KATHARINE SLEDGE FORT  
DB 339 PG 552  
DB 341 PG 341  
RB 478 PG 222

MATCHLINE -L- STA. 45 + 00.00  
SEE SHEET 7

MATCHLINE -L- STA. 59 + 00.00  
SEE SHEET 9



NOTES:  
■ PROP PAVED SHOULDER  
FOR -L- PROFILE, SEE SHEET 29

4/14/2022  
R:\Projects\Roadway\Projects\N5819\_R5820\_RDY\_PS\8.dgn  
E:\Projects\Roadway\Projects\N5819\_R5820\_RDY\_PS\8.dgn