

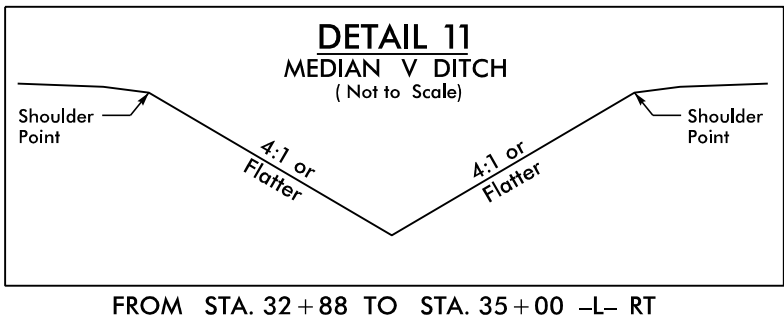
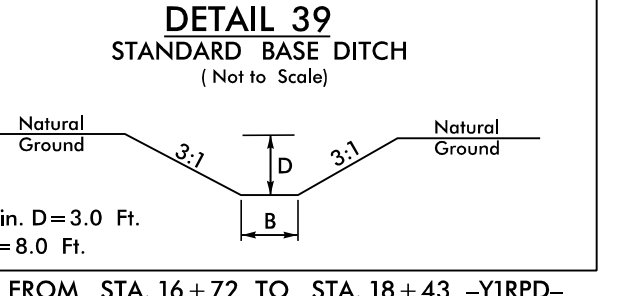
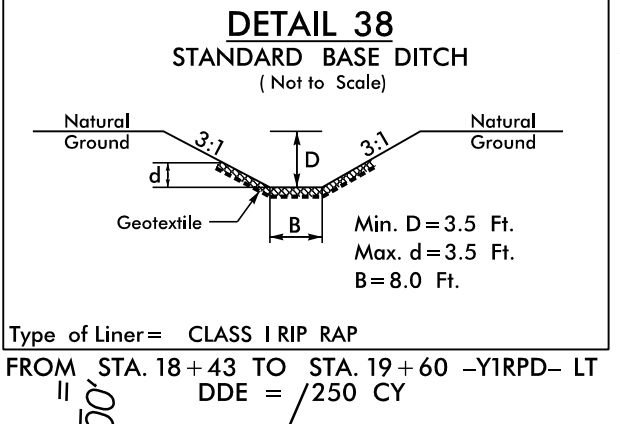
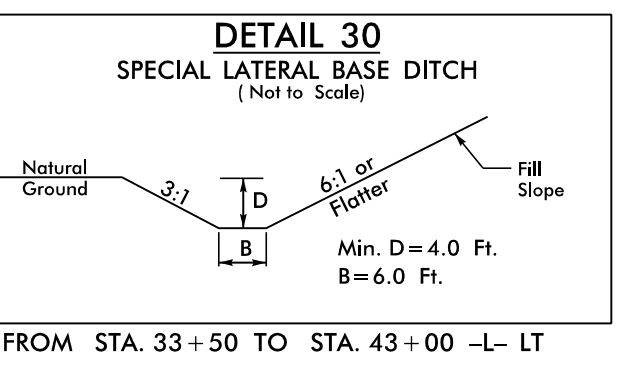
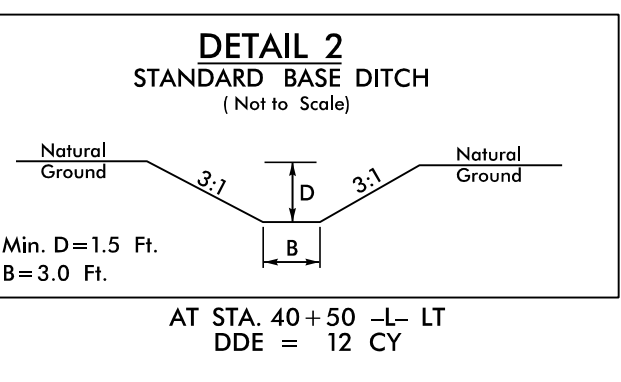
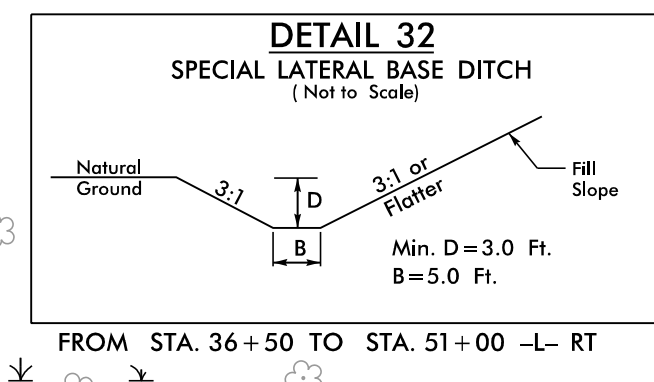
8/17/2022

R:\Projects\2022\19\5819\_R5820\_RDY\_PS47.dgn

|  |                                  |
|--|----------------------------------|
| PROJECT REFERENCE NO.<br><b>R-5819 /R-5820</b>                           | SHEET NO.<br><b>7</b>            |
| RW SHEET NO.   |                                  |
| ROADWAY DESIGN ENGINEER<br>4/13/2022                                     | HYDRAULICS ENGINEER<br>4/13/2022 |
|  |                                  |
| <b>DOCUMENT NOT CONSIDERED FINAL<br/>UNLESS ALL SIGNATURES COMPLETED</b> |                                  |

# NV5

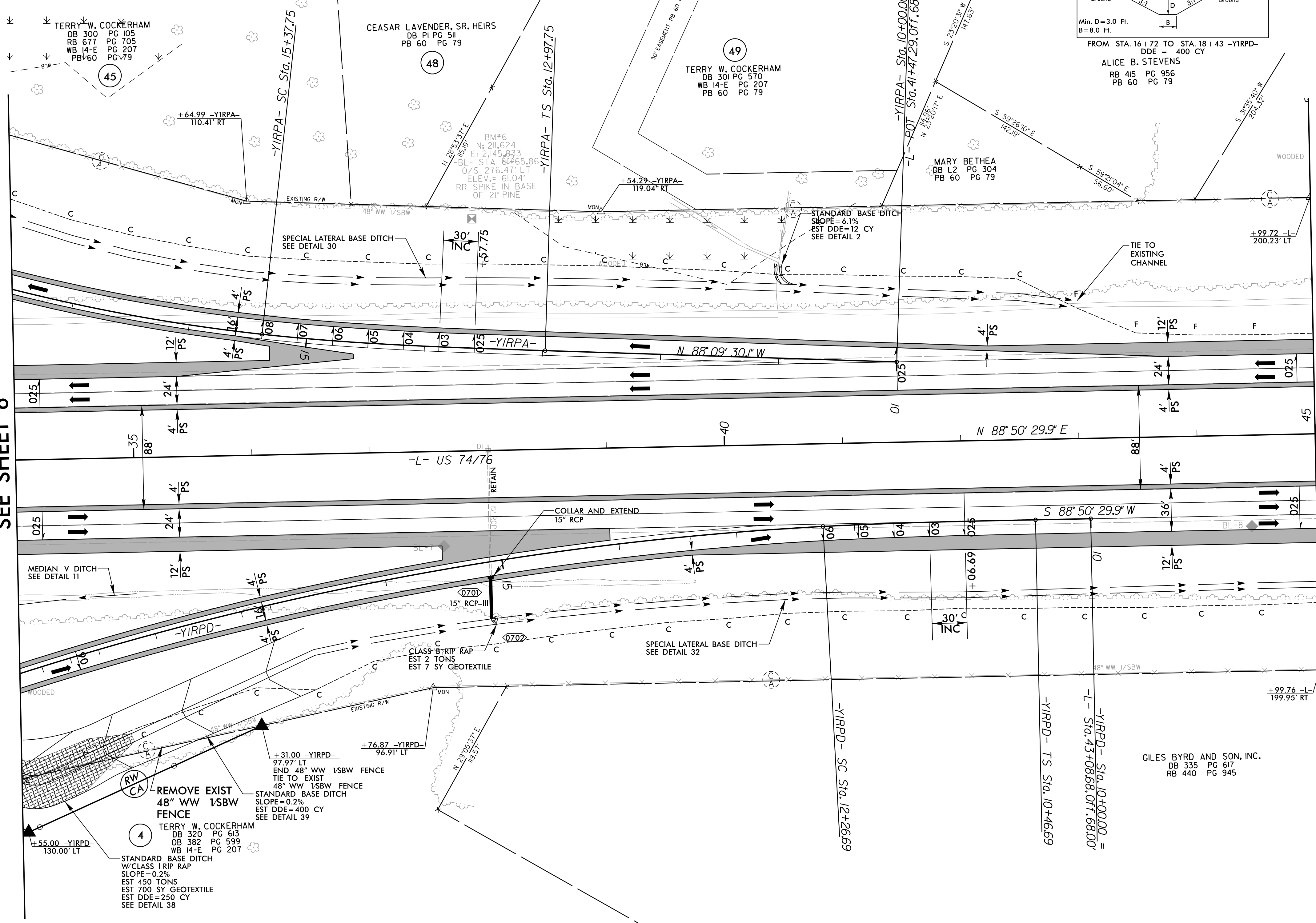
NVS ENGINEERS & CONSULTANTS, INC.  
3300 REGENCY PARKWAY, SUITE 100  
CARY, NC 27518  
P: 919.851.1912  
www.nv5.com



**-YIRPA-**  
 PIs Sta 14+57.80 PI Sta 18+23.77  
 $\Delta s = 4' 24' 26.5''$   $\Delta = 20' 46' 44.5''$  (RT)  
 $Ls = 240.00'$   $D = 3' 40' 22.1''$   
 $LT = 160.05'$   $L = 565.75'$   
 $ST = 80.05'$   $T = 286.02'$   
 $R = 1,560.00'$   
 $SE = 08$

MATCHLINE -L- STA. 34 + 00.00  
SEE SHEET 6

MATCHLINE -L- STA. 45 + 00.00  
SEE SHEET 8



**-YIRPD-**  
 PIs Sta 11+66.69 PI Sta 16+04.63  
 $\Delta s = 1' 54' 10.1''$   $\Delta = 15' 52' 44.1''$  (LT)  
 $Ls = 180.00'$   $D = 2' 06' 51.2''$   
 $LT = 120.01'$   $L = 751.05'$   
 $ST = 60.01'$   $T = 377.95'$   
 $R = 2,710.00'$   
 $SE = 08$

**NOTES:**  
 ■ PROP PAVED SHOULDER  
 FOR -L- PROFILE, SEE SHEET 28 & 29  
 FOR -YIRPA- PROFILE, SEE SHEET 39  
 FOR -YIRPD- PROFILE, SEE SHEET 42

NAD 83/NA 2011