

8/17/2022

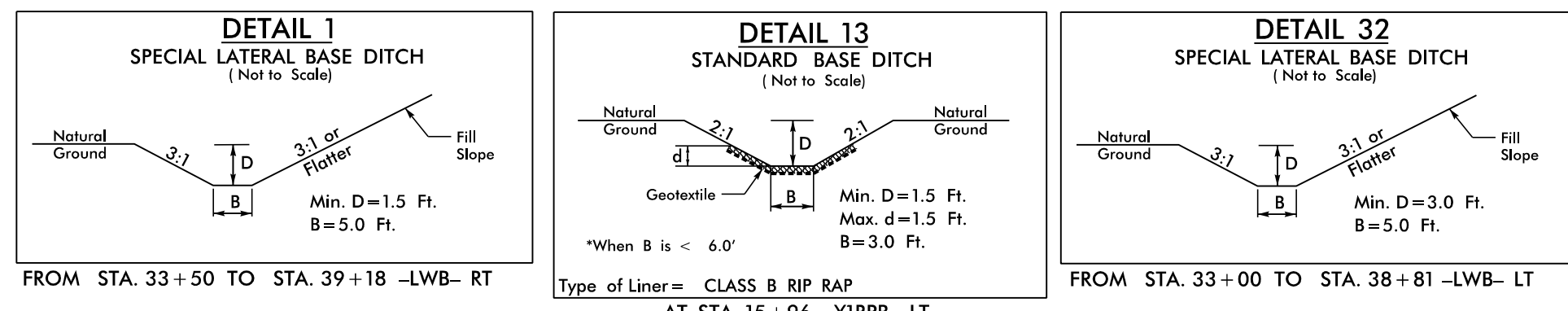
**NV5**  
 NV5 ENGINEERS & CONSULTANTS, INC.  
 3300 REGENCY PARKWAY, SUITE 100  
 CARY, NC 27518  
 P: 919.851.1912 www.nv5.com  
 NC License # 43332  
 Formerly CALXX Engineers & Consultants

PROJECT REFERENCE NO. **R-5819 /R-5820** SHEET NO. **5**

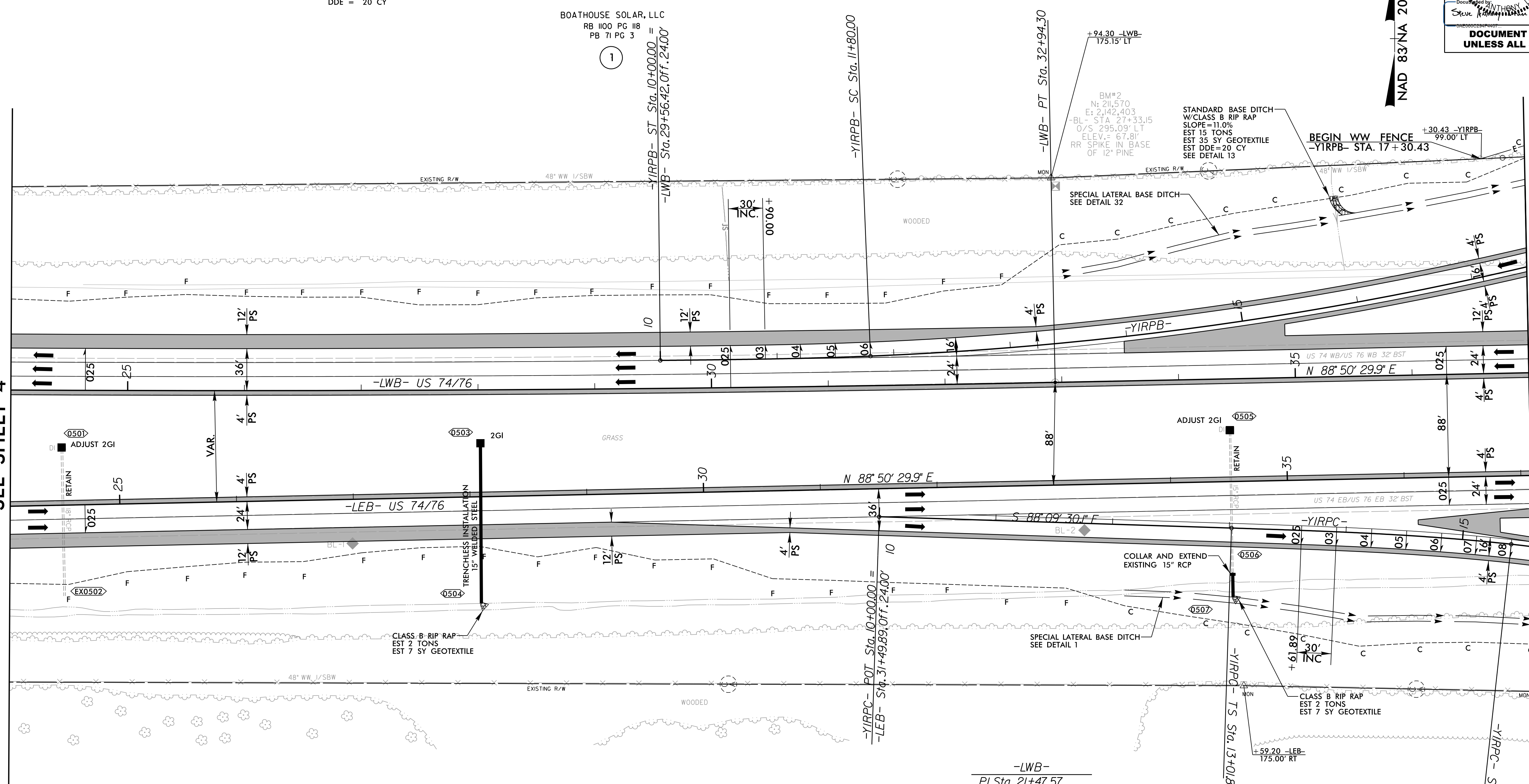
RW SHEET NO. ROADWAY DESIGN ENGINEER 4/13/2022 HYDRAULICS ENGINEER 4/13/2022

SEAL 017265  
 SEAL 039102

**DOCUMENT NOT CONSIDERED FINAL UNLESS ALL SIGNATURES COMPLETED**



MATCHLINE -LWB- STA. 24 + 00.00  
SEE SHEET 4



BOATHOUSE SOLAR, LLC  
 RB 1100 PG 118  
 PB 71 PG 3

TOP TOBACCO, L.P.  
 RB 987 PG 62  
 PB 71 PG 3

**-LWB-**

PI Sta 21+47.57  
 $\Delta = 3^\circ 46' 28.9" (LT)$   
 $D = 0^\circ 09' 52.3"$   
 $L = 2,294.30'$   
 $T = 1,147.57'$   
 $R = 34,825.00'$   
 $SE = NC$

**-YIRPB-**

PIs Sta 11+20.01 PI Sta 16+23.04  
 $\Theta_s = 1^\circ 43' 07.9" \Delta = 16^\circ 48' 05.3" (LT)$   
 $L_s = 180.00'$   $D = 1^\circ 54' 35.5"$   
 $LT = 120.01'$   $L = 879.72'$   
 $ST = 60.01'$   $T = 443.04'$   
 $R = 3,000.00'$   
 $SE = 06$

**-YIRPC-**

PIs Sta 14+61.94 PI Sta 18+27.94  
 $\Theta_s = 4^\circ 24' 26.5" \Delta = 20^\circ 46' 51.2" (RT)$   
 $L_s = 240.00'$   $D = 3^\circ 40' 22.1"$   
 $LT = 160.05'$   $L = 565.80'$   
 $ST = 80.05'$   $T = 286.04'$   
 $R = 1,560.00'$   
 $SE = 08$

**TRAFFIC DIAGRAM**  
 -YI- CHAUNCEY TOWN RD.  
 SR 1735

ADT 2022	-YI-	1,300	
ADT 2040	-YI-	2,900	
	-L- US 74/ US 76	500 / 1,800	300 / 1,000
	-L- US 74/ US 76	14,400 / 18,000	13,700 / 16,200
	-YI-	3,000 / 3,700	900 / 900
	-YI- CHAUNCEY TOWN RD. SR 1735		

**NOTES:**

- PROP PAVED SHOULDER
- FOR -LEB- PROFILE, SEE SHEET 26
- FOR -LWB- PROFILE, SEE SHEET 27
- FOR -YIRPB- PROFILE, SEE SHEET 40
- FOR -YIRPC- PROFILE, SEE SHEET 41

MATCHLINE -LWB- STA. 37 + 00.00  
SEE SHEET 6

8/17/2022  
 R:\Projects\2022\Projects\N5819\_R5820\_RDY\_PS\5.dgn  
 C:\Users\jbarham