
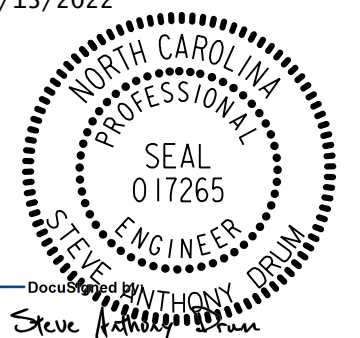
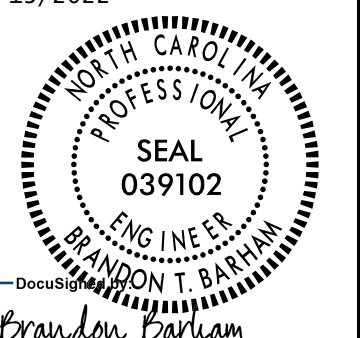
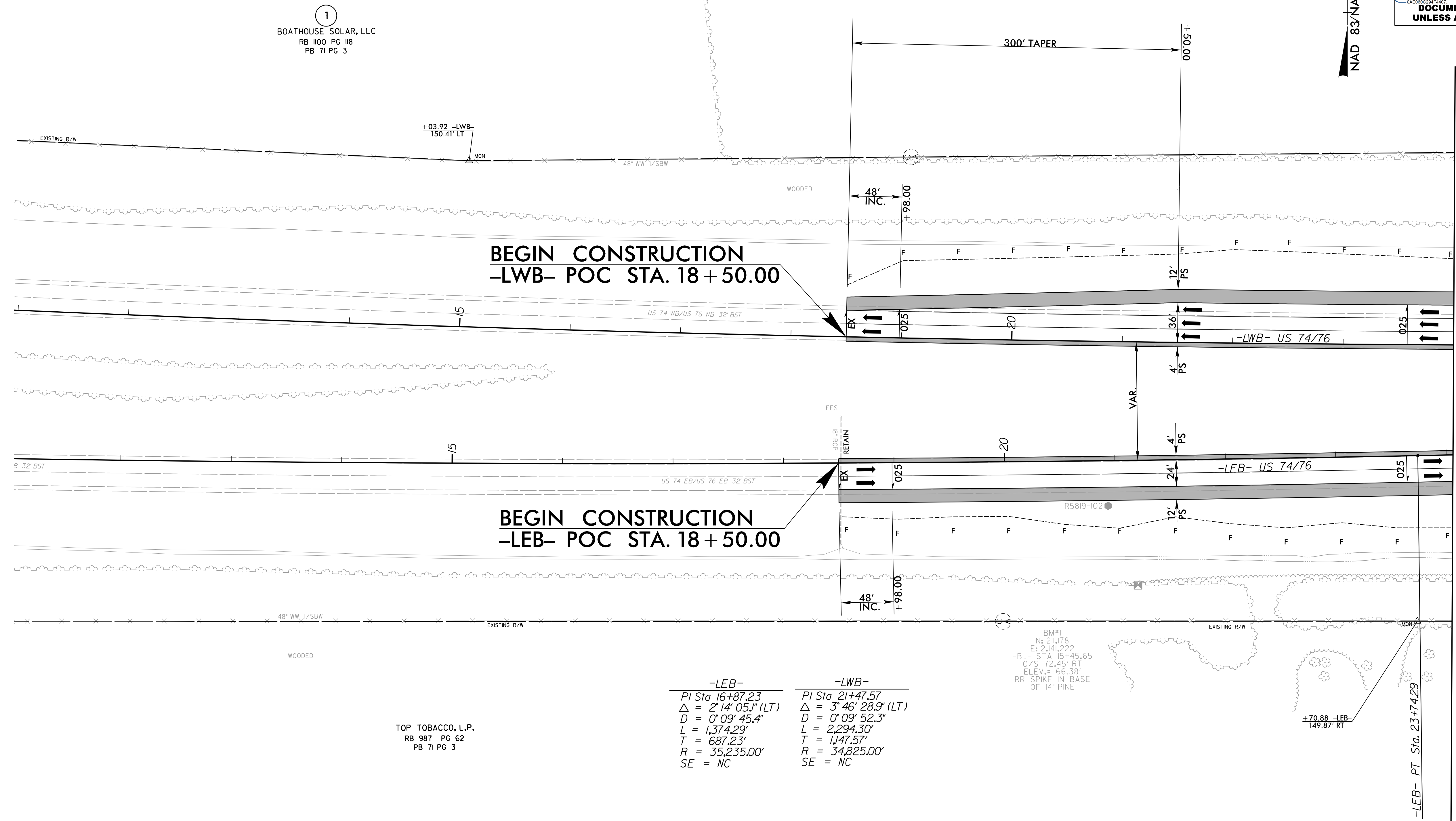


8/17/19



NV5
 NV5 ENGINEERS & CONSULTANTS, INC.
 3300 REGENCY PARKWAY, SUITE 100
 CARY, NC 27518
 P: 919.851.1912 www.NV5.com
 NCI License # F-3333
 Formerly CALIX Engineers & Consultants

PROJECT REFERENCE NO. R-5819 /R-5820	SHEET NO. 4
RW SHEET NO.	HYDRAULICS SHEET NO.
ROADWAY DESIGN ENGINEER 4/13/2022	HYDRAULICS ENGINEER 4/13/2022
 SEAL 017265 STEVE ANTHONY CIVIL ENGINEER NORTH CAROLINA	 SEAL 039102 BRANDON T. BARHAM CIVIL ENGINEER NORTH CAROLINA
DOCUMENT NOT CONSIDERED FINAL UNLESS ALL SIGNATURES COMPLETED	



1
 BOATHOUSE SOLAR, LLC
 RB 1100 PG 118
 PB 71 PG 3

TOP TOBACCO, L.P.
 RB 987 PG 62
 PB 71 PG 3

-LEB-	-LWB-
PI Sta 16+87.23	PI Sta 21+47.57
$\Delta = 2^{\circ} 14' 05.1''$ (LT)	$\Delta = 3^{\circ} 46' 28.9''$ (LT)
D = 0' 09' 45.4"	D = 0' 09' 52.3"
L = 1,374.29'	L = 2,294.30'
T = 687.23'	T = 1,147.57'
R = 35,235.00'	R = 34,825.00'
SE = NC	SE = NC

BM#1
 N: 211,178
 E: 2,141,222
 -BL- STA 15+45.65
 O/S T2.45' RT
 ELEV. = 66.38'
 RR SPIKE IN BASE
 OF 14" PINE

NOTES:
 ■ PROP PAVED SHOULDER
 FOR -LEB- PROFILE, SEE SHEET 26
 FOR -LWB- PROFILE, SEE SHEET 27

R:\Projects\2022\Projects\N\5819\5819_R5820_RDY_PSH4.dgn
 8/17/2022
 Steve Anthony