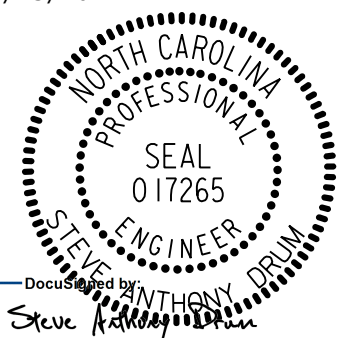
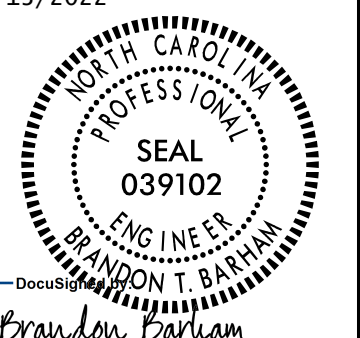


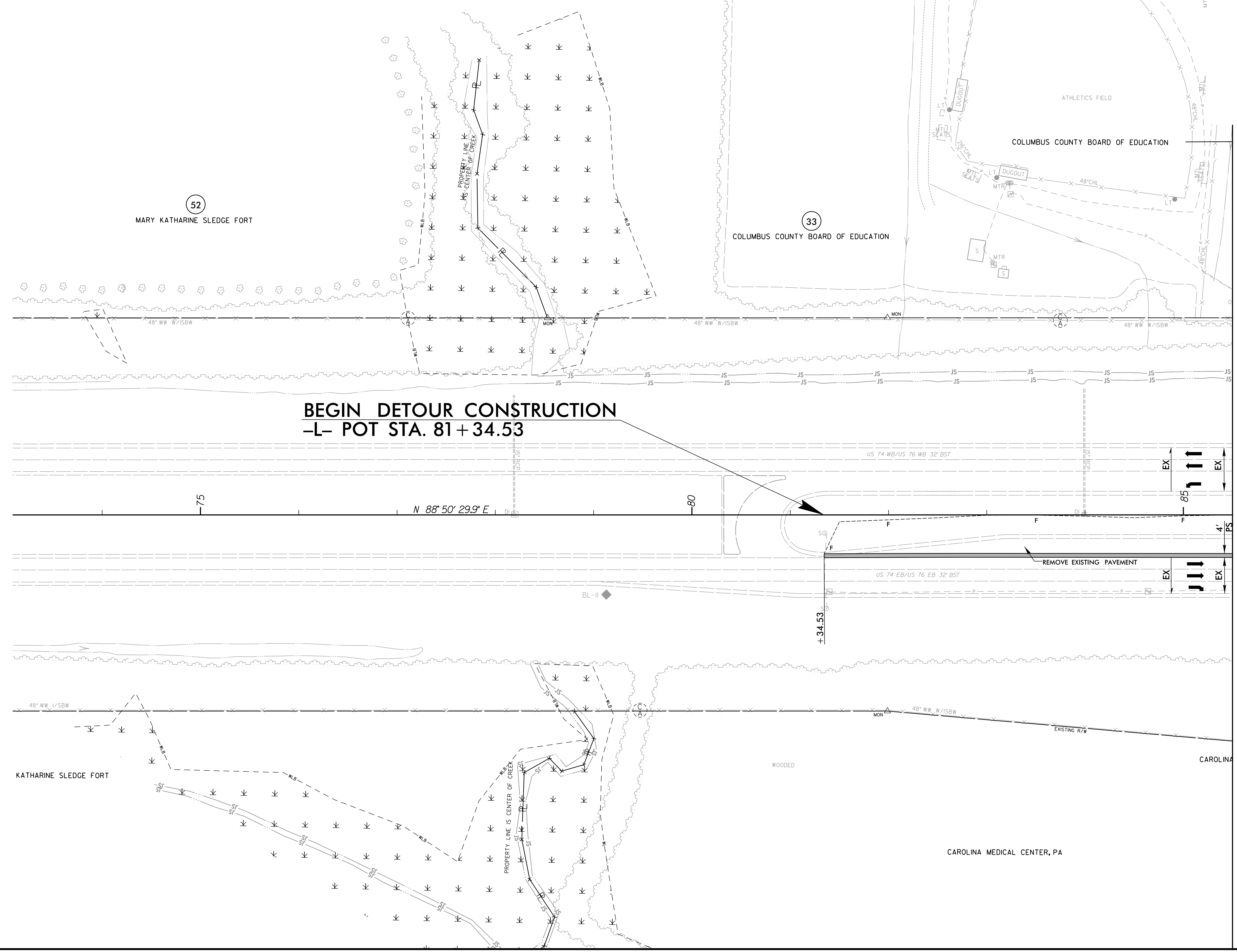
8/17/99

-Y2- DETOUR

NV5

NV5 ENGINEERS & CONSULTANTS, INC.
3300 REGENCY PARKWAY, SUITE 100
CARY, NC 27518
P: 919.851.1912
www.NV5.com
NC License # F-1333
Formerly CALYX Engineers & Consultants

PROJECT REFERENCE NO. <i>R-5819/R-5820</i>	SHEET NO. <i>2B-9</i>
RW SHEET NO.	
ROADWAY DESIGN ENGINEER 4/13/2022	HYDRAULICS ENGINEER 4/13/2022
	
Steve Riddick	Brandon T. Barham
DOCUMENT NOT CONSIDERED FINAL UNLESS ALL SIGNATURES COMPLETED	



NAD 83/NA 2011

MATCHLINE -L- STA. 85 + 50.00
SEE SHEET 2B-7

- NOTES:
-  PROP PAVED SHOULDER
 -  PAVEMENT REMOVAL

3/10/2022
R:\Projects\N\Pro\N5819_R5820_RDY_PSH2B-9.dgn
E:\Cadd\MapInfo