

8.17.17.99

-Y2- DETOUR

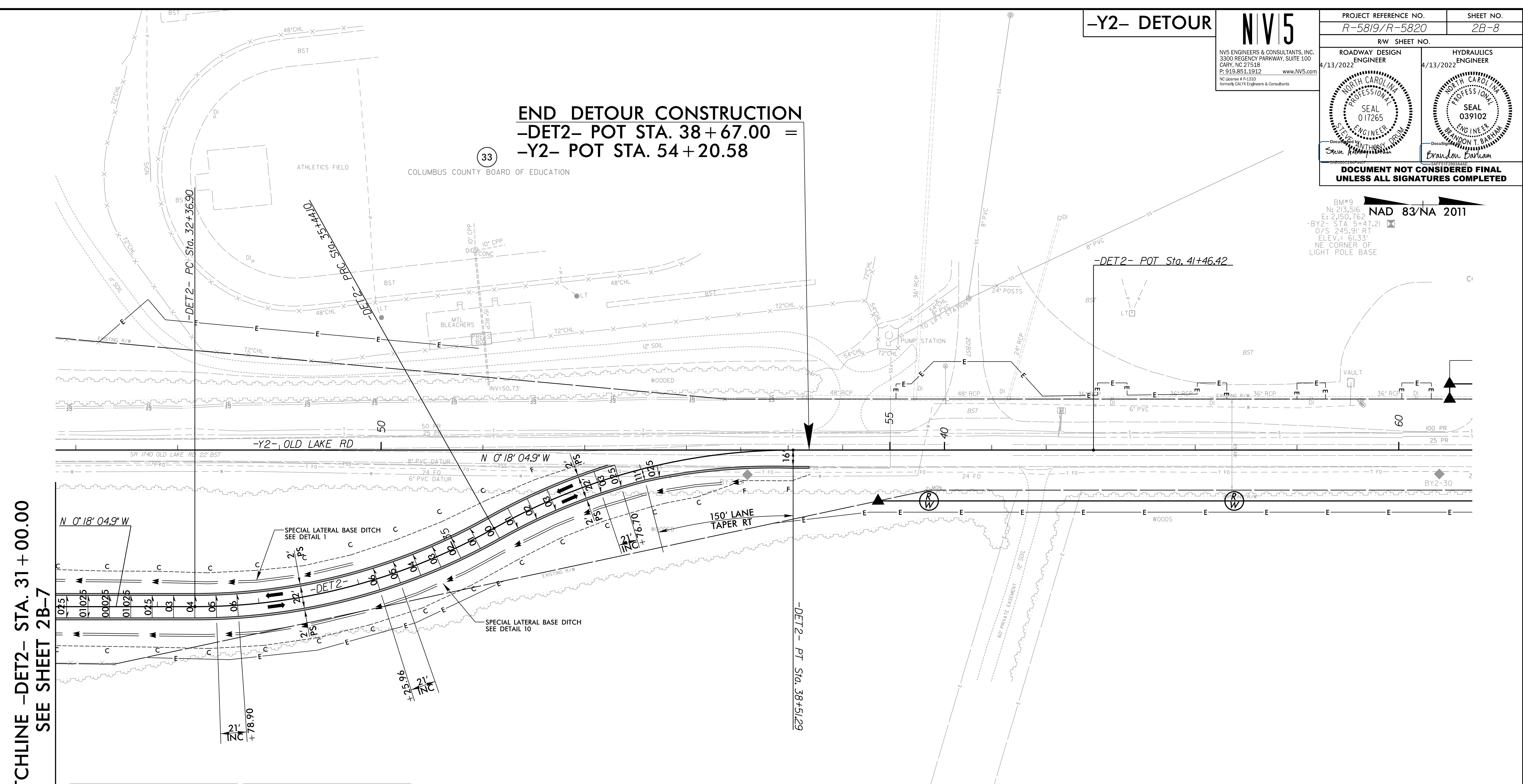
NIV5

PROJECT REFERENCE NO. R-5819/R-5820	SHEET NO. 2B-8
RW SHEET NO.	
ROADWAY DESIGN ENGINEER 4/13/2022	HYDRAULICS ENGINEER 4/13/2022
Steve R. Matthews	Brandon T. Barham
<b>DOCUMENT NOT CONSIDERED FINAL UNLESS ALL SIGNATURES COMPLETED</b>	

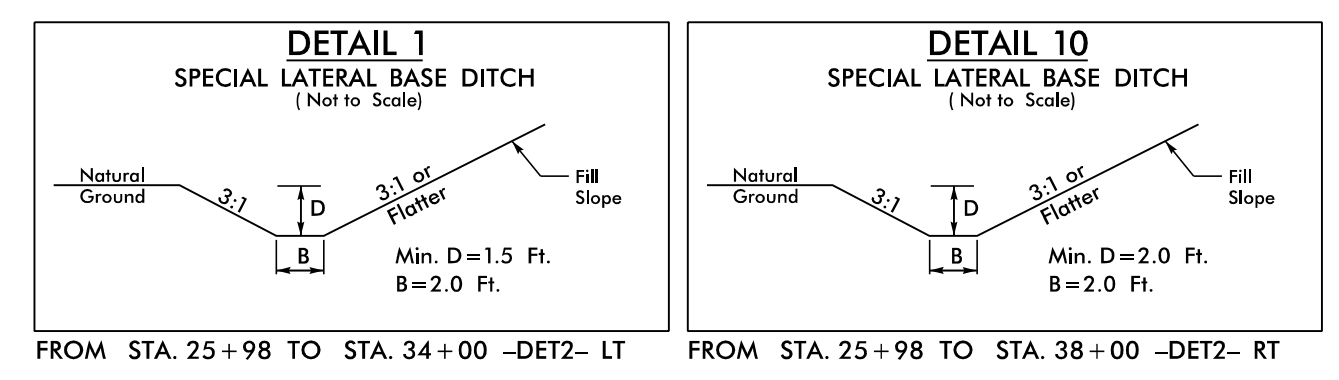
BM#9  
N: 213.516  
E: 2150.762  
-BY2- STA. 5+47.21  
O/S 245.91' RT  
ELEV. = 61.33'  
NE CORNER OF  
LIGHT POLE BASE

**NAD 83/NA 2011**

**END DETOUR CONSTRUCTION**  
**-DET2- POT STA. 38+67.00 =**  
**-Y2- POT STA. 54+20.58**



**MATCHLINE -DET2- STA. 31+00.00  
SEE SHEET 2B-7**



**-DET2-**

PI Sta. 33+93.95	PI Sta. 37+01.14
$\Delta = 29^\circ 20' 05.3"$ (LT)	$\Delta = 29^\circ 20' 05.3"$ (RT)
D = 9' 32" 57.5"	D = 9' 32" 57.5"
L = 307.19'	L = 307.19'
T = 157.04'	T = 157.04'
R = 600.00'	R = 600.00'
SE = 06	SE = 03

32  
RMS TIMBERLANDS, LLC

**NOTES:**  
 PROP PAVED SHOULDER  
 FOR -DET2- PROFILE, SEE SHEET 45

3/10/2022  
R:\Projects\2022\20220413\20220413\_195819\_195820\_RDY\_PS42B-8.dgn  
E:\Cadd\Match