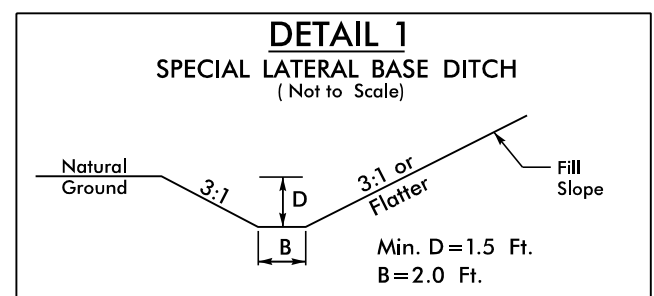


8/17/2022

R:\Projects\2022\19\195819_195820_RDY_PSH2B-6.dgn
E:\Users\macth...



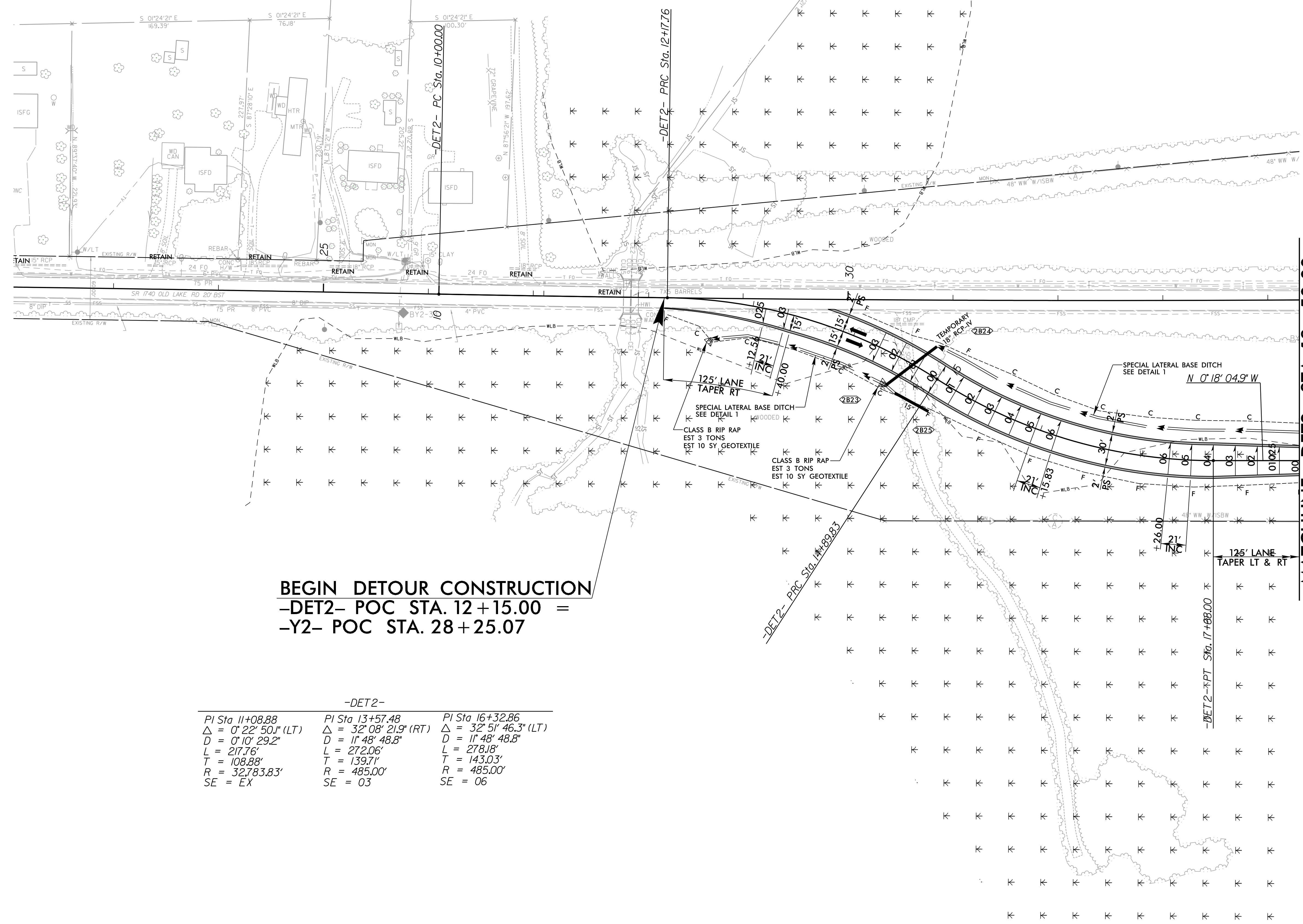
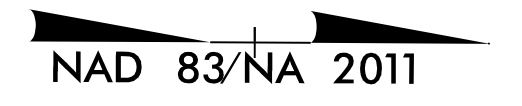
FROM STA. 12+65 TO STA. 14+61 -DET2- RT
 FROM STA. 14+75 TO STA. 22+50 -DET2- LT

-Y2- DETOUR

NV5

NV5 ENGINEERS & CONSULTANTS, INC.
 3300 REGENCY PARKWAY, SUITE 100
 CARY, NC 27518
 P: 919.851.1912 www.NV5.com
 NC License # E13337
 Formerly CALYX Engineers & Consultants

PROJECT REFERENCE NO. R-5819/R-5820	SHEET NO. 2B-6
RW SHEET NO.	HYDRAULICS SHEET NO.
ROADWAY DESIGN ENGINEER 4/13/2022	HYDRAULICS ENGINEER 4/13/2022
DOCUMENT NOT CONSIDERED FINAL UNLESS ALL SIGNATURES COMPLETED	



BEGIN DETOUR CONSTRUCTION
 -DET2- POC STA. 12+15.00 =
 -Y2- POC STA. 28+25.07

-DET2-		
PI Sta 11+08.88	PI Sta 13+57.48	PI Sta 16+32.86
$\Delta = 0^\circ 22' 50.1''$ (LT)	$\Delta = 32^\circ 08' 21.9''$ (RT)	$\Delta = 32^\circ 51' 46.3''$ (LT)
D = 0' 10' 29.2"	D = 1' 48' 48.8"	D = 1' 48' 48.8"
L = 217.76'	L = 272.06'	L = 278.18'
T = 108.88'	T = 139.71'	T = 143.03'
R = 32,783.83'	R = 485.00'	R = 485.00'
SE = EX	SE = 03	SE = 06

MATCHLINE -DET2- STA. 18+50.00
SEE SHEET 2B-7

NOTES:
 PROP PAVED SHOULDER
 FOR -DET2- PROFILE, SEE SHEET 45