

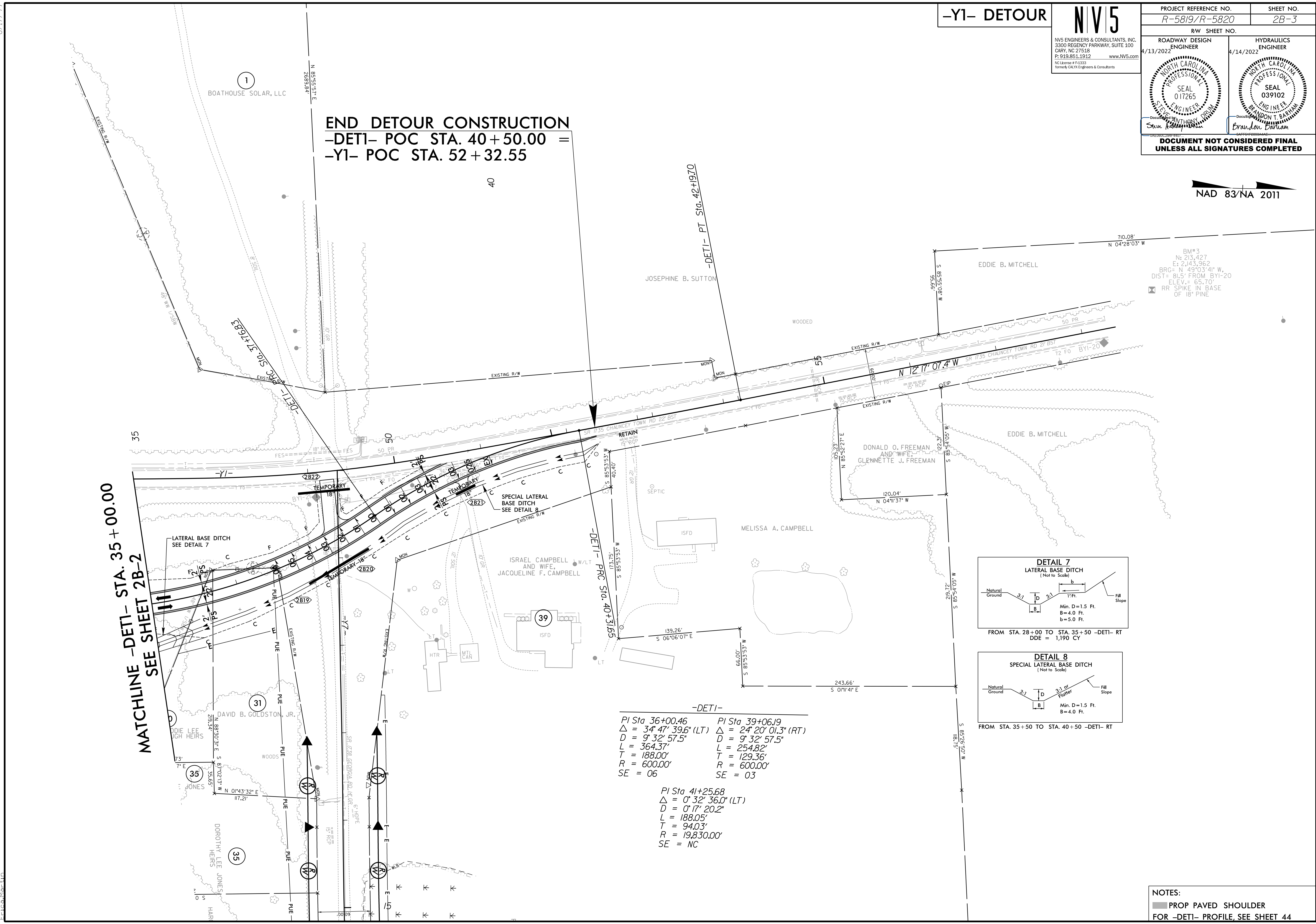
8.17/199
4/13/2022
R:\Projects\N5819_1\5819_1\RDY_PSH2B-3.dgn
E:\Projects\N5819_1\5819_1\RDY_PSH2B-3.dgn

-Y1- DETOUR

NV5

PROJECT REFERENCE NO. R-5819/R-5820	SHEET NO. 2B-3
RW SHEET NO.	
ROADWAY DESIGN ENGINEER 4/13/2022	HYDRAULICS ENGINEER 4/14/2022
<p>DOCUMENT NOT CONSIDERED FINAL UNLESS ALL SIGNATURES COMPLETED</p>	

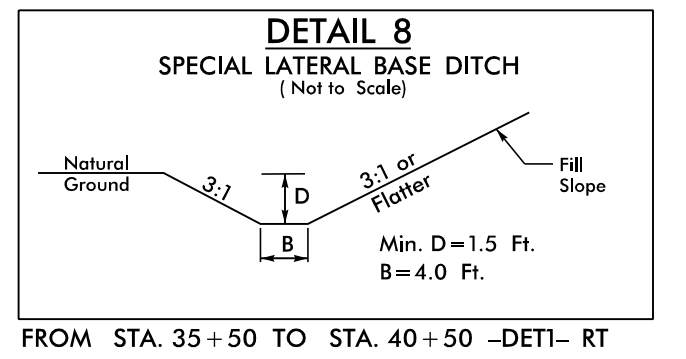
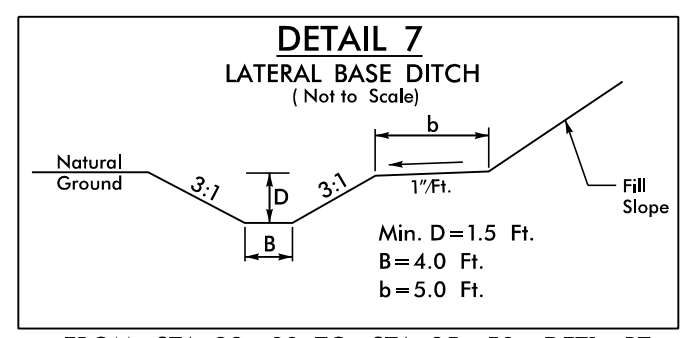
NAD 83/NA 2011



END DETOUR CONSTRUCTION
-DETI- POC STA. 40+50.00 =
-Y1- POC STA. 52+32.55

MATCHLINE -DETI- STA. 35+00.00
SEE SHEET 2B-2

BM#3
 N: 213.427
 E: 2143.362
 BRG= N 49°03'41" W
 DIST= 81.5' FROM BYI-20
 ELEV.= 65.70'
 RR SPIKE IN BASE
 OF 18" PINE



-DETI-

PI Sta 36+00.46	PI Sta 39+06.19
$\Delta = 34^{\circ}47'39.6"$ (LT)	$\Delta = 24^{\circ}20'01.3"$ (RT)
D = 9'32'57.5"	D = 9'32'57.5"
L = 364.37'	L = 254.82'
T = 188.00'	T = 129.36'
R = 600.00'	R = 600.00'
SE = 06	SE = 03

PI Sta 41+25.68
$\Delta = 0^{\circ}32'36.0"$ (LT)
D = 0'17'20.2"
L = 188.05'
T = 94.03'
R = 19,830.00'
SE = NC

NOTES:
PROP PAVED SHOULDER
FOR -DETI- PROFILE, SEE SHEET 44