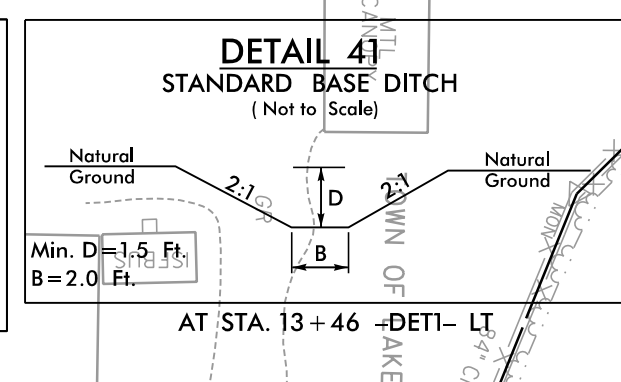
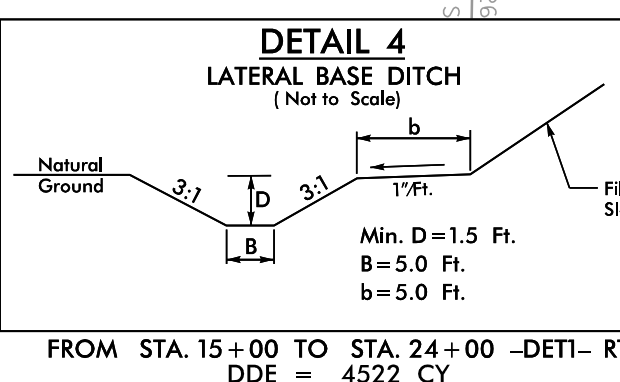
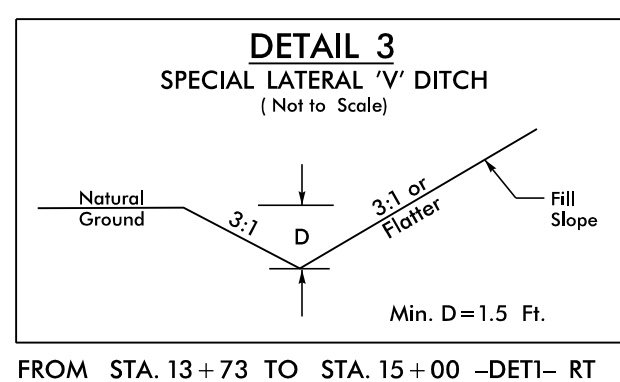
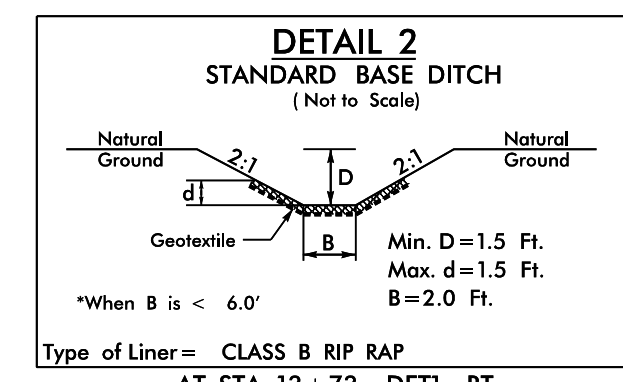
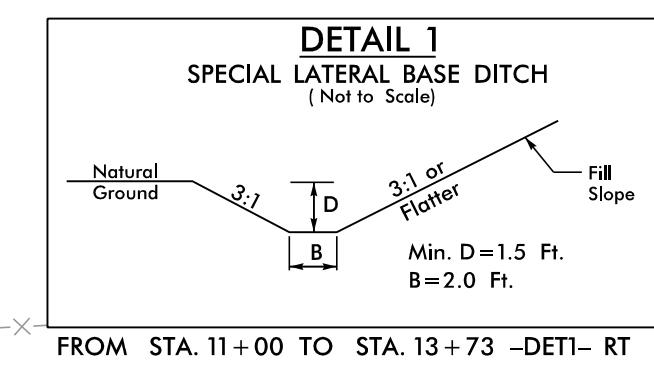


8.17.2022

R:\Projects\19\_R5819\_R5820\_RDY\_PS42B-1.dgn  
E:\Projects\19\_R5819\_R5820\_RDY\_PS42B-1.dgn



-Y1- DETOUR

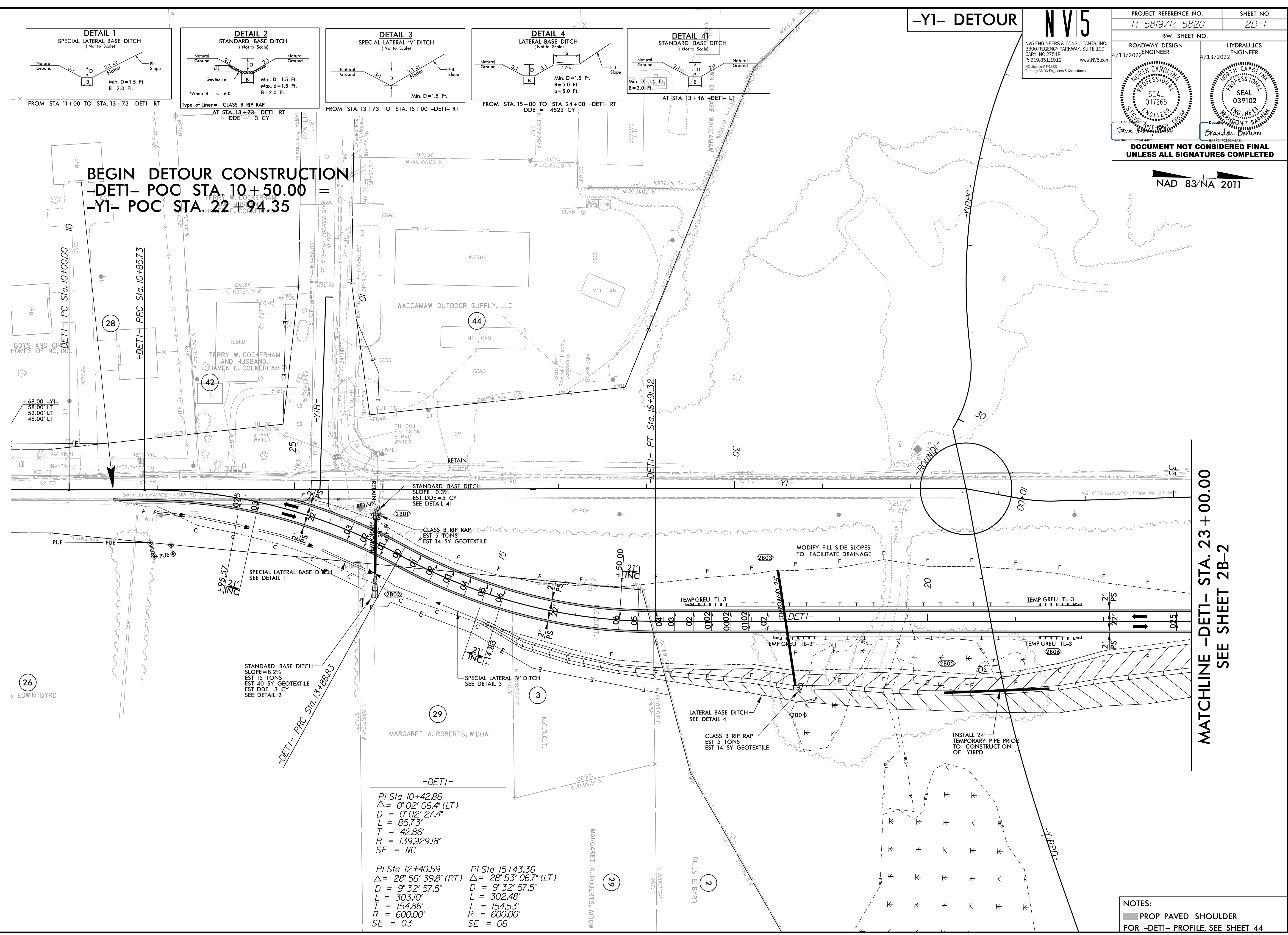
NV5

NV5 ENGINEERS & CONSULTANTS, INC.  
3300 REGENCY PARKWAY, SUITE 100  
CARY, NC 27518  
P: 919.851.1912  
www.NV5.com  
NC License # F-1333  
Formerly C&LX Engineers & Consultants

|  |                                  |
|--|----------------------------------|
| PROJECT REFERENCE NO.<br>R-5819/R-5820                                   | SHEET NO.<br>2B-1                |
| RW SHEET NO.   |                                  |
| ROADWAY DESIGN<br>4/13/2022 ENGINEER                                     | HYDRAULICS<br>4/13/2022 ENGINEER |
|  |                                  |
| <b>DOCUMENT NOT CONSIDERED FINAL<br/>UNLESS ALL SIGNATURES COMPLETED</b> |                                  |

NAD 83/NA 2011

**BEGIN DETOUR CONSTRUCTION**  
-DETI- POC STA. 10+50.00  
-Y1- POC STA. 22+94.35



**MATCHLINE -DETI- STA. 23+00.00  
SEE SHEET 2B-2**

-DETI-

|  |  |  |
|--|--|--|
| PI Sta 10+42.86<br>$\Delta = 0^{\circ} 02' 06.4" (LT)$<br>$D = 0^{\circ} 02' 27.4"$<br>$L = 85.73'$<br>$T = 42.86'$<br>$R = 139.92918'$<br>$SE = NC$ | PI Sta 12+40.59<br>$\Delta = 28^{\circ} 56' 39.8" (RT)$<br>$D = 9^{\circ} 32' 57.5"$<br>$L = 303.10'$<br>$T = 154.86'$<br>$R = 600.00'$<br>$SE = 03$ | PI Sta 15+43.36<br>$\Delta = 28^{\circ} 53' 06.7" (LT)$<br>$D = 9^{\circ} 32' 57.5"$<br>$L = 302.48'$<br>$T = 154.53'$<br>$R = 600.00'$<br>$SE = 06$ |
|--|--|--|

NOTES:  
 PROP PAVED SHOULDER  
 FOR -DETI- PROFILE, SEE SHEET 44