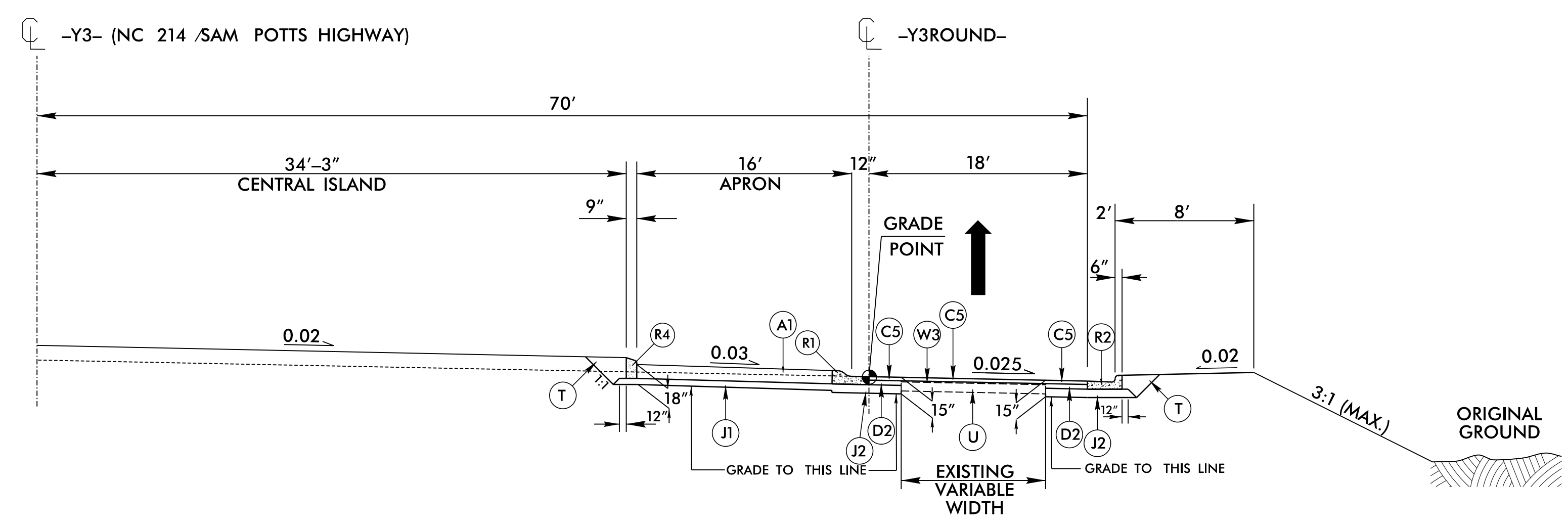
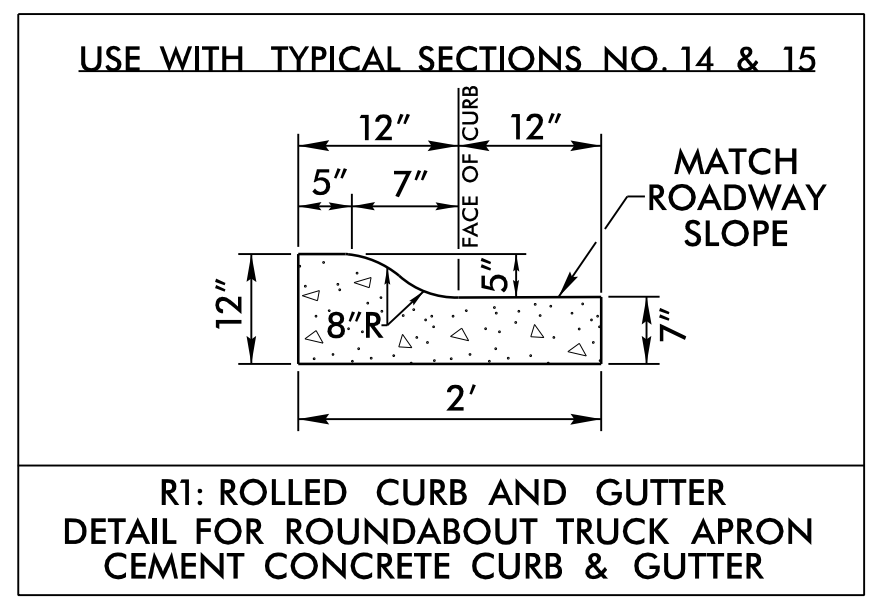


5/14/2022

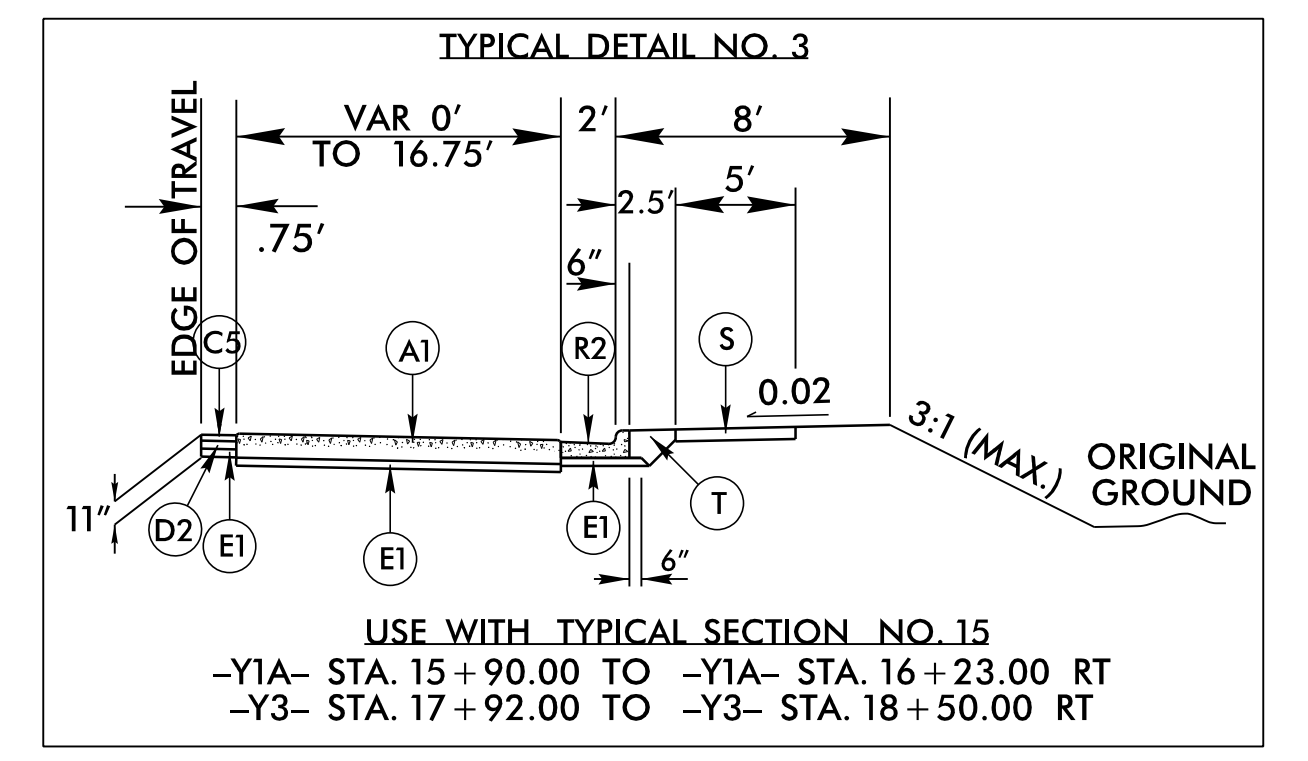
PAVEMENT SCHEDULE	
FINAL PAVEMENT DESIGN - MAY 21, 2022	
A1	12" JOINTED CON.
C1	1.5" S9.5C
C2	3" S9.5C
C3	VAR. S9.5C
C4	2.5" S9.5B
C5	3" S9.5B
C6	VAR. S9.5B
D1	2.5" I19.0C
D2	4" I19.0C
D3	VAR. I19.0C
E1	4" B25.0C
E2	5" B25.0C
E3	5.5" B25.0C
E4	VAR. B25.0C
J1	6" ABC
J2	8" ABC
K	12" CLASS IV STAB.
N	GEOTEXTILE
P	PRIME COAT
R1	2' ROLLED CURB
R2	2'-6" C & G
R3	5" MON. ISLAND
R4	9" X 18" CURB
R6	SHLD BERM GUTTER
S	SIDEWALK
T	EARTH MATERIAL
U	EXIST. PAVEMENT
V	RUMBLE STRIPS
W1	WEDGING
W2	WEDGING
W3	WEDGING
W4	WEDGING
Z1	INCIDENTAL MILLING
Z2	1.5" MILL.



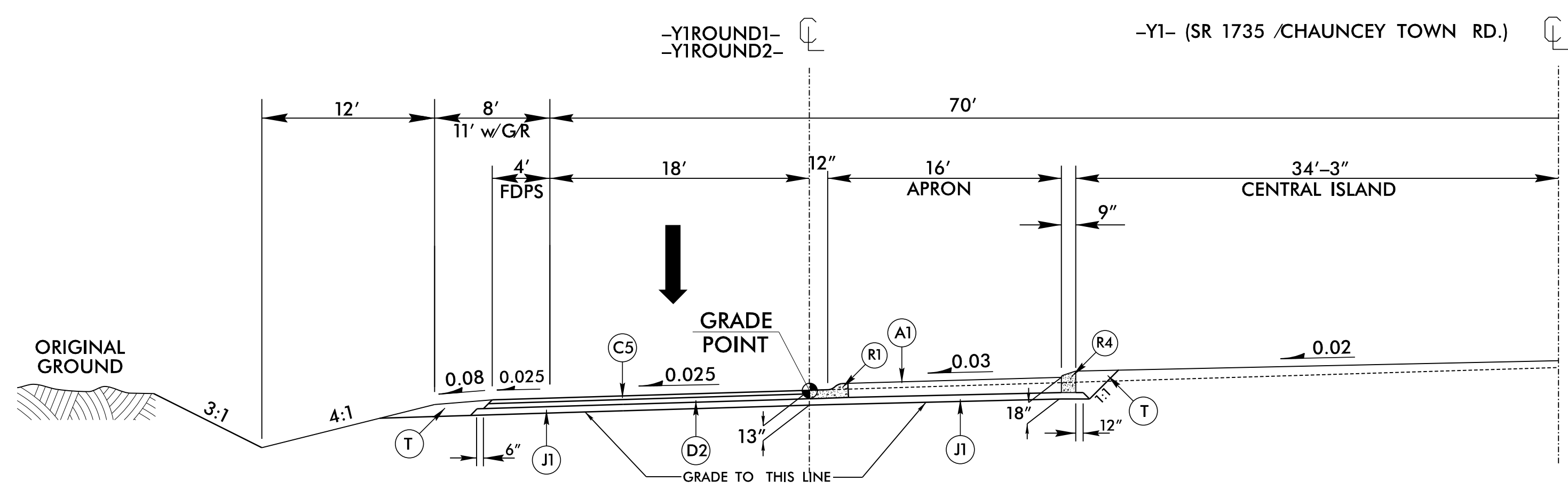
TYPICAL SECTION NO.14



R1: ROLLED CURB AND GUTTER
DETAIL FOR ROUNDABOUT TRUCK APRON
CEMENT CONCRETE CURB & GUTTER



USE WITH TYPICAL SECTION NO. 15
-Y1A- STA. 15+90.00 TO -Y1A- STA. 16+23.00 RT
-Y3- STA. 17+92.00 TO -Y3- STA. 18+50.00 RT



TYPICAL SECTION NO.15

USE TYPICAL SECTION NO. 14
-Y3ROUND- STA. 10+00.00 TO -Y3ROUND- STA. 13+26.72

NOTES:
MILL AS NEEDED
SEE PLANS FOR TAPERS

USE TYPICAL SECTION NO. 15
-Y1ROUND1- STA. 10+00.00 TO -Y1ROUND1- STA. 13+26.73
-Y1ROUND2- STA. 10+00.00 TO -Y1ROUND2- STA. 13+26.73

NOTES:
SEE PLANS FOR TAPERS

<p>NV5 ENGINEERS & CONSULTANTS, INC. 3300 REGENCY PARKWAY, SUITE 100 CARY, NC 27518 P: 919.851.1912 www.NV5.com Formerly CAVE Engineers & Consultants</p>	PROJECT REFERENCE NO. <i>R-5819/R-5820</i>	SHEET NO. <i>2A-6</i>
	RW SHEET NO.	
ROADWAY DESIGN ENGINEER 4/29/2022	PAVEMENT DESIGN ENGINEER 5/3/2022	
<p>DOCUMENT NOT CONSIDERED FINAL UNLESS ALL SIGNATURES COMPLETED</p>		

R:\R04_4/29/2022_R5819_R5820_RDY_TYP.dgn