

5/14/2022

PAVEMENT SCHEDULE

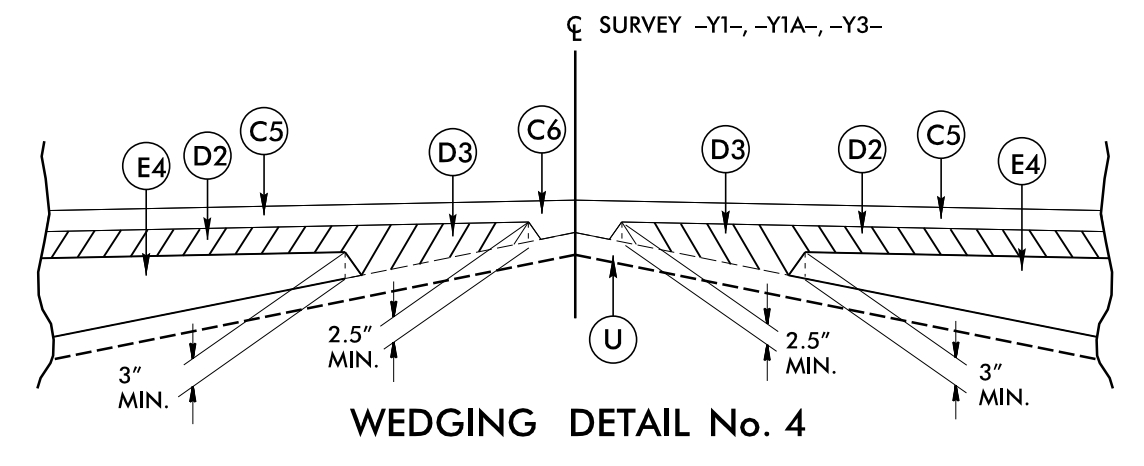
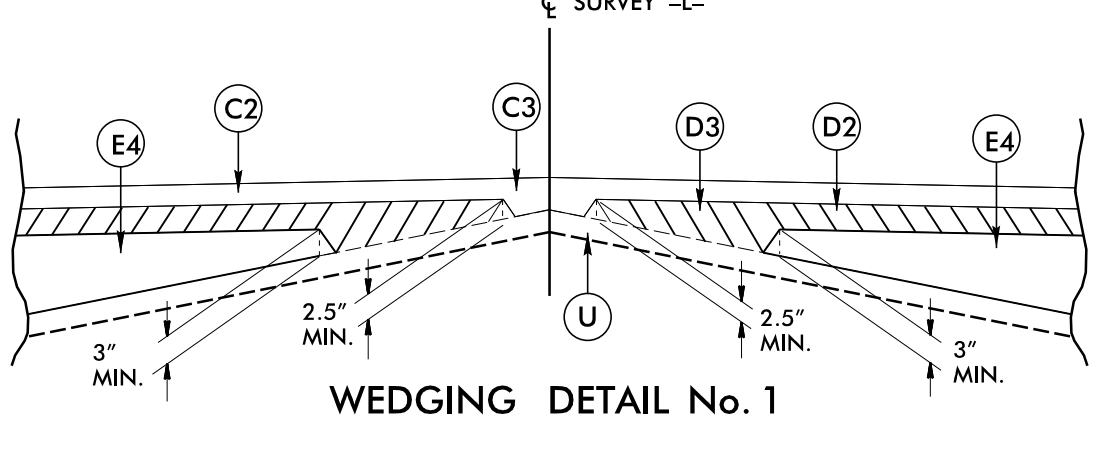
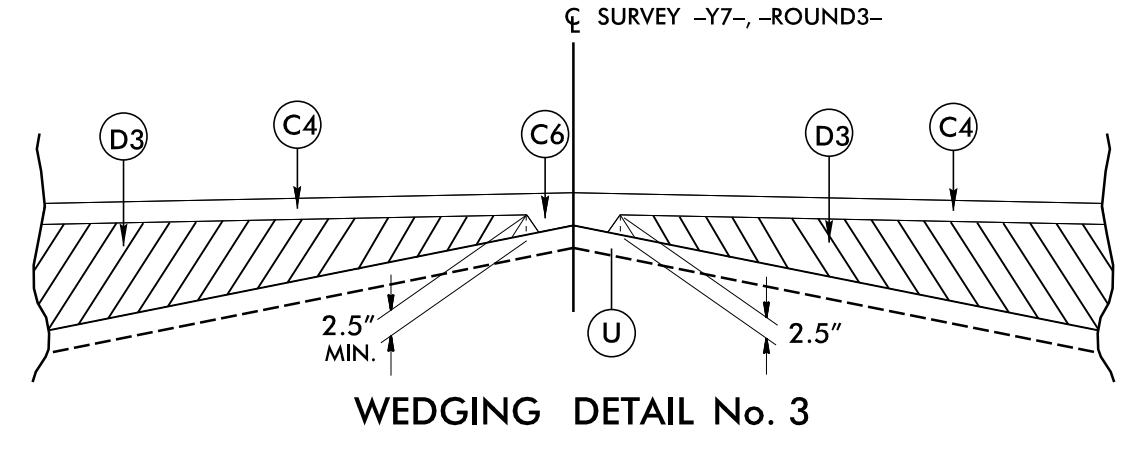
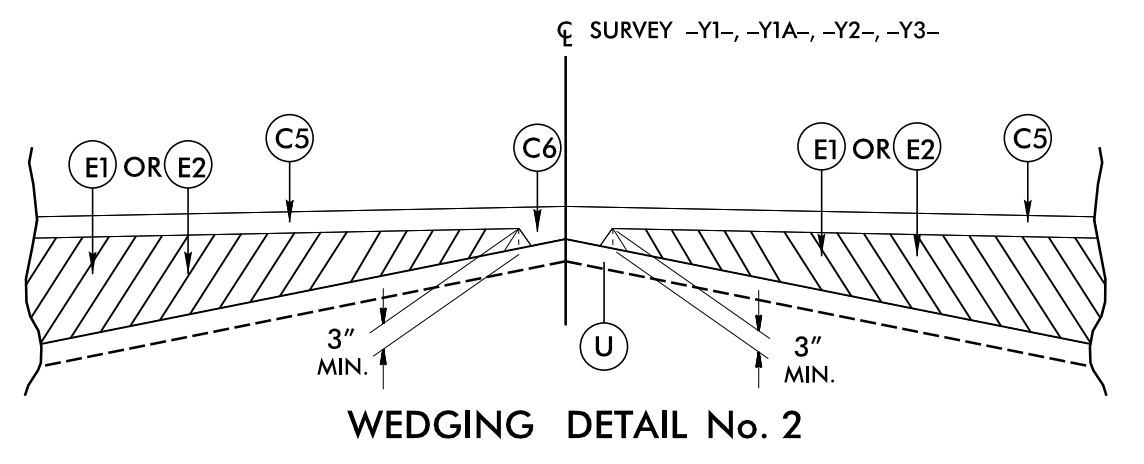
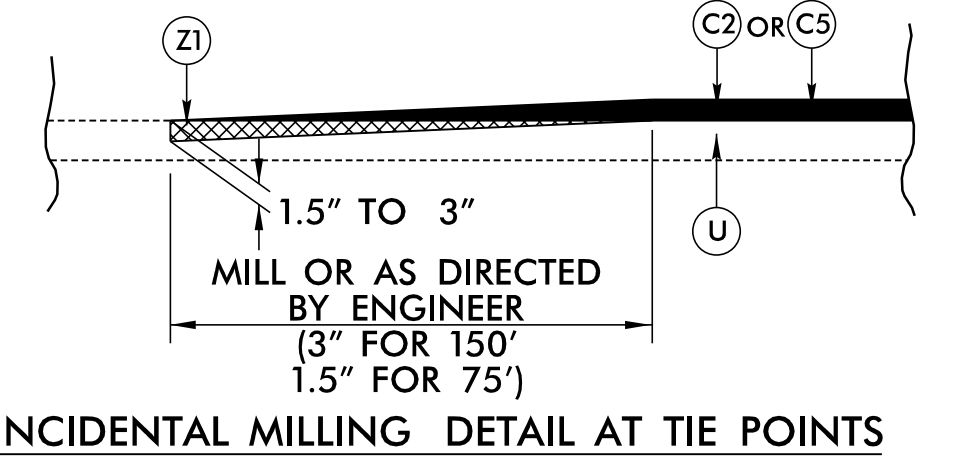
(FINAL PAVEMENT DESIGN - MAY 21, 2021)

A1	12" JOINTED PORTLAND CEMENT CONCRETE PAVEMENT, WITH 4x4 W5.5xW5.5 WIRE MESH OR 6x6 W8.5xW8.5 WIRE MESH	E2	PROP. APPROX. 5" ASPHALT CONCRETE BASE COURSE, TYPE B25.0C, AT AN AVERAGE RATE OF 570 LBS. PER SQ. YD.	R6	SHOULDER BERM GUTTER.
C1	PROP. APPROX. 1 1/2" ASPHALT CONCRETE SURFACE COURSE, TYPE S9.5C, AT AN AVERAGE RATE OF 168 LBS. PER SQ. YD.	E3	PROP. APPROX. 5.5" ASPHALT CONCRETE BASE COURSE, TYPE B25.0C, AT AN AVERAGE RATE OF 627 LBS. PER SQ. YD.	S	4" CONCRETE SIDEWALK.
C2	PROP. APPROX. 3" ASPHALT CONCRETE SURFACE COURSE, TYPE S9.5C, AT AN AVERAGE RATE OF 168 LBS. PER SQ. YD. IN EACH OF TWO LAYERS.	E4	PROP. VAR. DEPTH ASPHALT CONCRETE BASE COURSE, TYPE B25.0C, AT AN AVERAGE RATE OF 114 LBS. PER SQ. YD. PER 1" DEPTH. TO BE PLACED IN LAYERS NOT LESS THAN 3" IN DEPTH OR GREATER THAN 5 1/2" IN DEPTH.	T	EARTH MATERIAL.
C3	PROP. VAR. DEPTH ASPHALT CONCRETE SURFACE COURSE, TYPE S9.5C, AT AN AVERAGE RATE OF 112 LBS. PER SQ. YD. PER 1" DEPTH. TO BE PLACED IN LAYERS NOT TO EXCEED 2" IN DEPTH.	J1	PROP. 6" AGGREGATE BASE COURSE.	U	EXISTING PAVEMENT.
C4	PROP. APPROX. 2.5" ASPHALT CONCRETE SURFACE COURSE, TYPE S9.5B, AT AN AVERAGE RATE OF 137.5 LBS. PER SQ. YD. IN EACH OF TWO LAYERS.	J2	PROP. 8" AGGREGATE BASE COURSE.	V	RUMBLE STRIPS
C5	PROP. APPROX. 3" ASPHALT CONCRETE SURFACE COURSE, TYPE S9.5B, AT AN AVERAGE RATE OF 165 LBS. PER SQ. YD. IN EACH OF TWO LAYERS.	K	12" CLASS IV SUBGRADE STABILIZATION	W1	VARIABLE DEPTH ASPHALT PAVEMENT(SEE WEDGING DETAIL).
C6	PROP. VAR. DEPTH ASPHALT CONCRETE SURFACE COURSE, TYPE S9.5B, AT AN AVERAGE RATE OF 110 LBS. PER SQ. YD. PER 1" DEPTH. TO BE PLACED IN LAYERS NOT TO EXCEED 1 1/2" IN DEPTH.	N	GEOTEXTILE FOR SOIL STABILIZATION	W2	VARIABLE DEPTH ASPHALT PAVEMENT(SEE WEDGING DETAIL).
D1	PROP. APPROX. 2.5" ASPHALT CONCRETE INTERMEDIATE COURSE, TYPE I19.0C, AT AN AVERAGE RATE OF 285 LBS. PER SQ. YD.	P	PRIME COAT AT THE RATE OF .35 GAL. PER SQ. YD.	W3	VARIABLE DEPTH ASPHALT PAVEMENT(SEE WEDGING DETAIL).
D2	PROP. APPROX. 4" ASPHALT CONCRETE INTERMEDIATE COURSE, TYPE I19.0C, AT AN AVERAGE RATE OF 456 LBS. PER SQ. YD.	R1	2' ROLLED CURB AND GUTTER (SEE ROLLED CURB DETAIL)	W4	VARIABLE DEPTH ASPHALT PAVEMENT(SEE WEDGING DETAIL).
D3	PROP. VAR. DEPTH ASPHALT CONCRETE INTERMEDIATE COURSE, TYPE I19.0C, AT AN AVERAGE RATE OF 114 LBS. PER SQ. YD. PER 1" DEPTH, TO BE PLACED IN LAYERS NOT LESS THAN 2 1/2" IN DEPTH OR GREATER THAN 4" IN DEPTH.	R2	2'-6" CONCRETE CURB AND GUTTER.	Z1	INCIDENTAL MILLING
E1	PROP. APPROX. 4" ASPHALT CONCRETE BASE COURSE, TYPE B25.0C, AT AN AVERAGE RATE OF 456 LBS. PER SQ. YD.	R3	5" MONOLITHIC CONCRETE ISLAND (KEYED IN).	Z2	1.5" DEPTH MILLING.
		R4	9" X 18" CONCRETE CURB.		

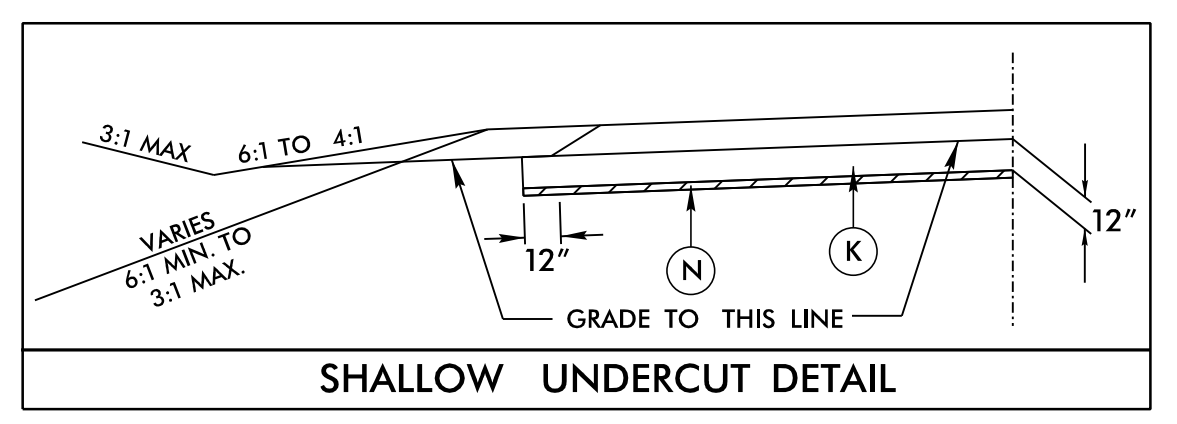
NV5
 NV5 ENGINEERS & CONSULTANTS, INC.
 3300 REGENCY PARKWAY, SUITE 100
 CARY, NC 27518
 P: 919.851.1912 www.nv5.com
NC License # F41333 formerly CALV Engineers & Consultants

PROJECT REFERENCE NO. R-5819/R-5820	SHEET NO. 2A-1
RW SHEET NO.	
ROADWAY DESIGN ENGINEER 4/29/2022	PAVEMENT DESIGN ENGINEER 5/3/2022

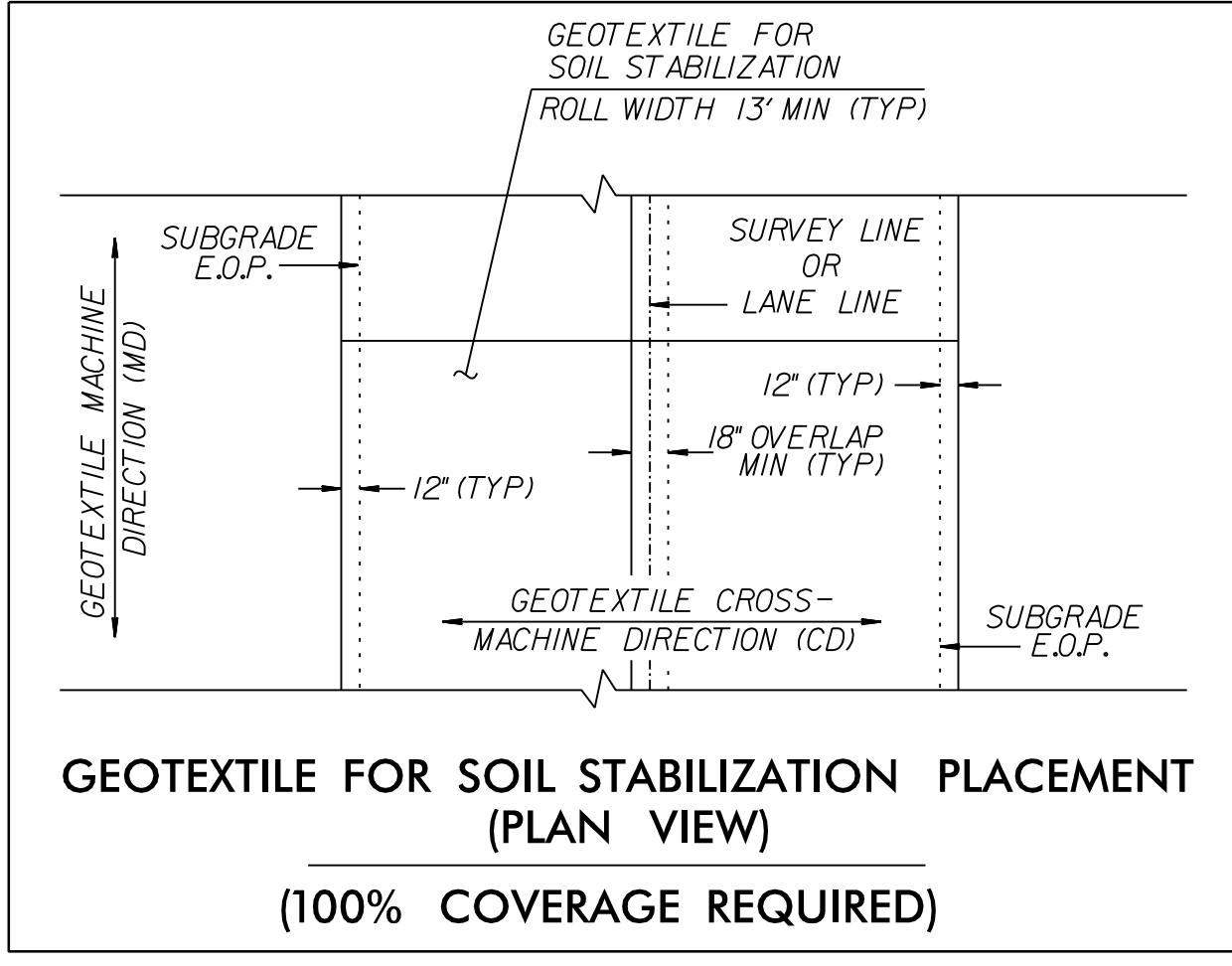
DOCUMENT NOT CONSIDERED FINAL UNLESS ALL SIGNATURES COMPLETED



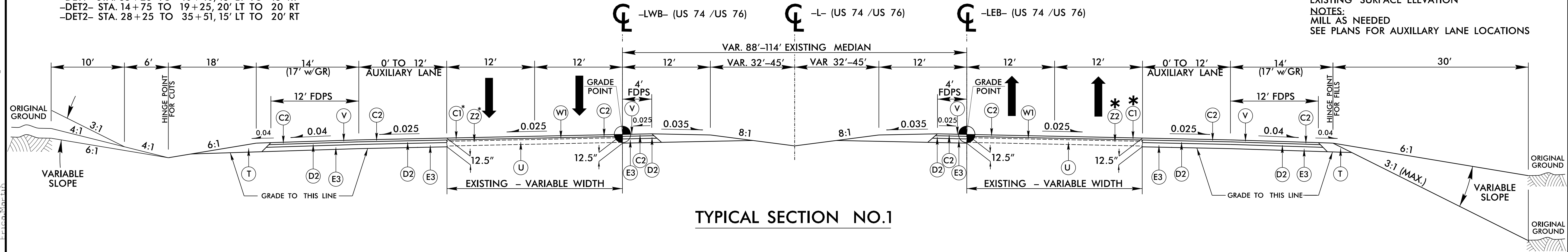
NOTE: PAVEMENT EDGE SLOPES ARE 1:1 UNLESS SHOWN OTHERWISE.



- SHALLOW UNDERCUT STATIONS**
- LWB- STA. 31+75 TO 39+38, 50' LT TO 150' RT
 - L- STA. 16+75 TO 20+25, 37' LT TO 82' LT & 37' RT TO 82' RT
 - L- STA. 23+75 TO 26+25, 37' LT TO 82' LT & 37' RT TO 82' RT
 - L- STA. 46+75 TO 50+25, 37' LT TO 82' LT & 37' RT TO 82' RT
 - L- STA. 50+75 TO 54+25, 37' LT TO 82' LT & 37' RT TO 82' RT
 - L- STA. 86+75 TO 89+25, 37' LT TO 82' LT & 37' RT TO 82' RT
 - L- STA. 100+75 TO 104+25, 37' LT TO 82' LT & 37' RT TO 82' RT
 - Y1- STA. 13+75 TO 26+75, 10' LT TO 21' LT & 10' RT TO 16' RT
 - Y1- STA. 49+75 TO 51+75, 10' LT TO 17' LT & 10' RT TO 17' RT
 - Y1A- STA. 13+25 TO 16+25, 31' LT TO 35' RT
 - Y2- STA. 50+25 TO 65+75, 17' LT TO 27' LT & 17' RT TO 23' RT
 - Y3- STA. 18+25 TO 21+40, 8' LT TO 14' LT & 10' RT TO 38' RT
 - Y7- STA. 11+75 TO 14+25, 32' LT TO 38' RT
 - Y7- STA. 23+75 TO 26+25, 20' LT TO 20' RT
 - Y7- STA. 27+25 TO 29+75, 15' LT TO 13' RT
 - Y7- STA. 37+25 TO 38+75, 19' LT TO 19' RT
 - Y7- STA. 61+75 TO 62+75, 19' LT TO 19' RT
 - DET1- STA. 23+25 TO 23+75, 15' LT TO 15' RT
 - DET1- STA. 25+25 TO 25+40, 15' LT TO 15' RT
 - DET1- STA. 35+25 TO 40+40, 15' LT TO 15' RT
 - DET2- STA. 14+75 TO 19+25, 20' LT TO 20' RT
 - DET2- STA. 28+25 TO 35+51, 15' LT TO 20' RT



USE TYPICAL SECTION NO.1
 -LWB- STA. 18+50.00 TO -LWB- STA. 39+38.57
 -LEB- STA. 18+50.00 TO -LEB- STA. 39+47.20
 -L- STA. 10+00.00 TO -L- STA. 105+30.00
 *USE Z2 AND C1 WHERE PROPOSED PAVEMENT SURFACE IS LESS THAN 3" HIGHER THAN THE EXISTING SURFACE ELEVATION
 NOTES:
 MILL AS NEEDED
 SEE PLANS FOR AUXILIARY LANE LOCATIONS



R:\B0_4/29/2022_R5819_R5820_RDY_TYP.dgn