

**This electronic collection of documents is provided  
for the convenience of the user  
and is Not a Certified Document –**

**The documents contained herein were originally issued  
and sealed by the individuals whose names and license  
numbers appear on each page, on the dates appearing  
with their signature on that page.**

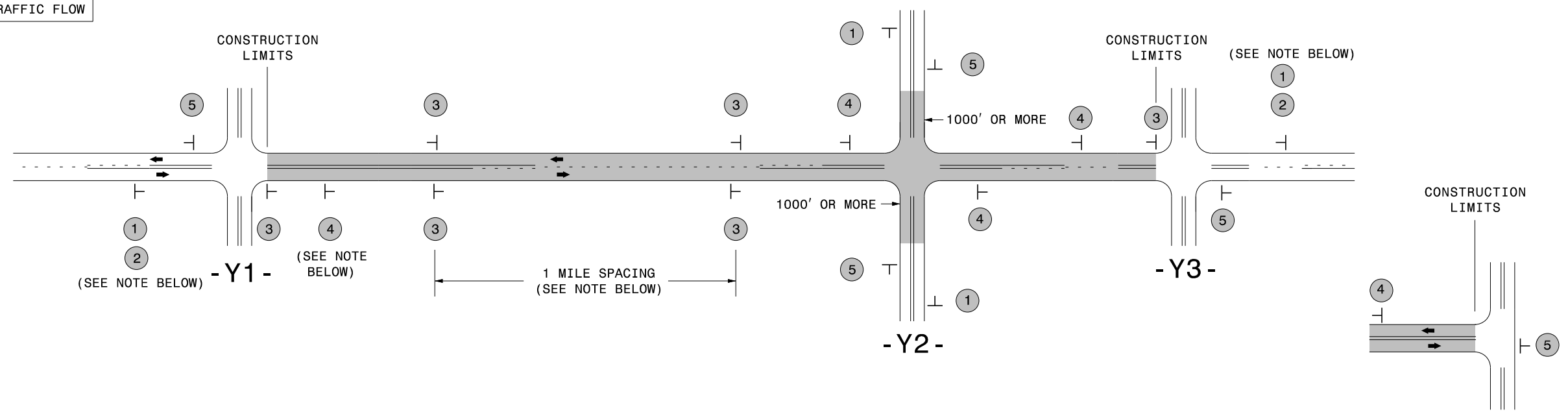
**This file or an individual page  
shall not be considered a certified document.**

# SIGNING FOR RESURFACING PROJECTS

**LEGEND**

┆ STATIONARY SIGN

← DIRECTION OF TRAFFIC FLOW



## MAINLINE (-L-) SIGNING

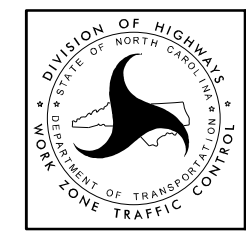
## -Y- LINE SIGNING

SIGNING NOTES AND PLACEMENT PER DIRECTION	1		PLACE 1000' PRIOR TO BEGINNING OF CONSTRUCTION LIMITS. ONLY USED ON -Y- LINES IF RESURFACING LIMITS EXTEND 1000' ALONG -Y- LINE.	<p><b>NO REQUIRED STATIONARY SIGNING FOR THE FOLLOWING -Y- LINE CONDITIONS:</b></p> <ol style="list-style-type: none"> <li>LESS THAN 1000' OF RESURFACING ALONG -Y- LINE</li> <li>SUBDIVISION ROADS</li> <li>DEAD END ROADS</li> </ol> <p>WHEN PAVING/CONSTRUCTION ACTIVITIES PROCEED ACROSS AN UNSIGNED -Y- LINE, PORTABLE ADVANCE WARNING SIGNS SHALL BE USED ALONG THE -Y- LINE AS SHOWN BELOW. REMOVE UPON COMPLETION OF WORK.</p> <div style="display: flex; justify-content: space-around;"> <div style="text-align: center;">               PLACED 500' IN ADVANCE OF FLAGGER.         </div> <div style="text-align: center;">               PLACED 250' IN ADVANCE OF FLAGGER.         </div> </div>
	2		#2 SIGN ONLY USED WHEN CONSTRUCTION LIMITS ARE 2 OR MORE MILES IN LENGTH. ROUND UP TO NEXT WHOLE NUMBER. (NO FRACTIONAL OR DECIMAL NUMBERS)	
	3		- PLACE INITIALLY AT THE CONSTRUCTION LIMITS AND SPACE 1 MILE APART THEREAFTER. - AT TEE INTERSECTIONS INSTALL INITIALLY 1/2 MILE FROM INTERSECTION AND SPACE 1 MILE APART THEREAFTER.	
	4		- THESE ARE FOR -Y- LINES THAT ARE "THROUGH" ROADWAYS. - DEAD END AND SUBDIVISION ROADS ARE NOT "THROUGH" ROADWAYS. - INSTALL 500' +/- FROM EACH -Y- LINE APPROACH AS SHOWN ABOVE. - FOR MULTIPLE -Y- LINES THAT ARE SEPARATED BY 0.25 MILES OR LESS, TREAT AS A SINGLE UNIT AND INSTALL WITHIN 500' OF EACH APPROACH. - A MAXIMUM OF 2 SIGN SETS PER MILE. DO NOT INSTALL WHEN -Y- LINES ARE WITHIN 0.5 MILES FROM "END ROAD WORK" SIGN. - FOR TEE INTERSECTIONS, INSTALL WITHIN 500' +/- OF THE INTERSECTION ALONG -L- LINE.	
	5		PLACE 500' FOLLOWING THE END OF CONSTRUCTION LIMITS OR AS SHOWN WHEN WORK ENDS AT A 3-WAY TEE INTERSECTION.	

THE ABOVE SIGNS ARE ALL THAT ARE REQUIRED FOR A CONTRACTOR TO BEGIN A RESURFACING CONTRACT. ANY ADDITIONAL SIGNS REQUESTED BY NCDOT DIVISIONS SHALL BE INSTALLED WITHIN 7 BUSINESS DAYS OF THE START OF CONTRACT WORK.

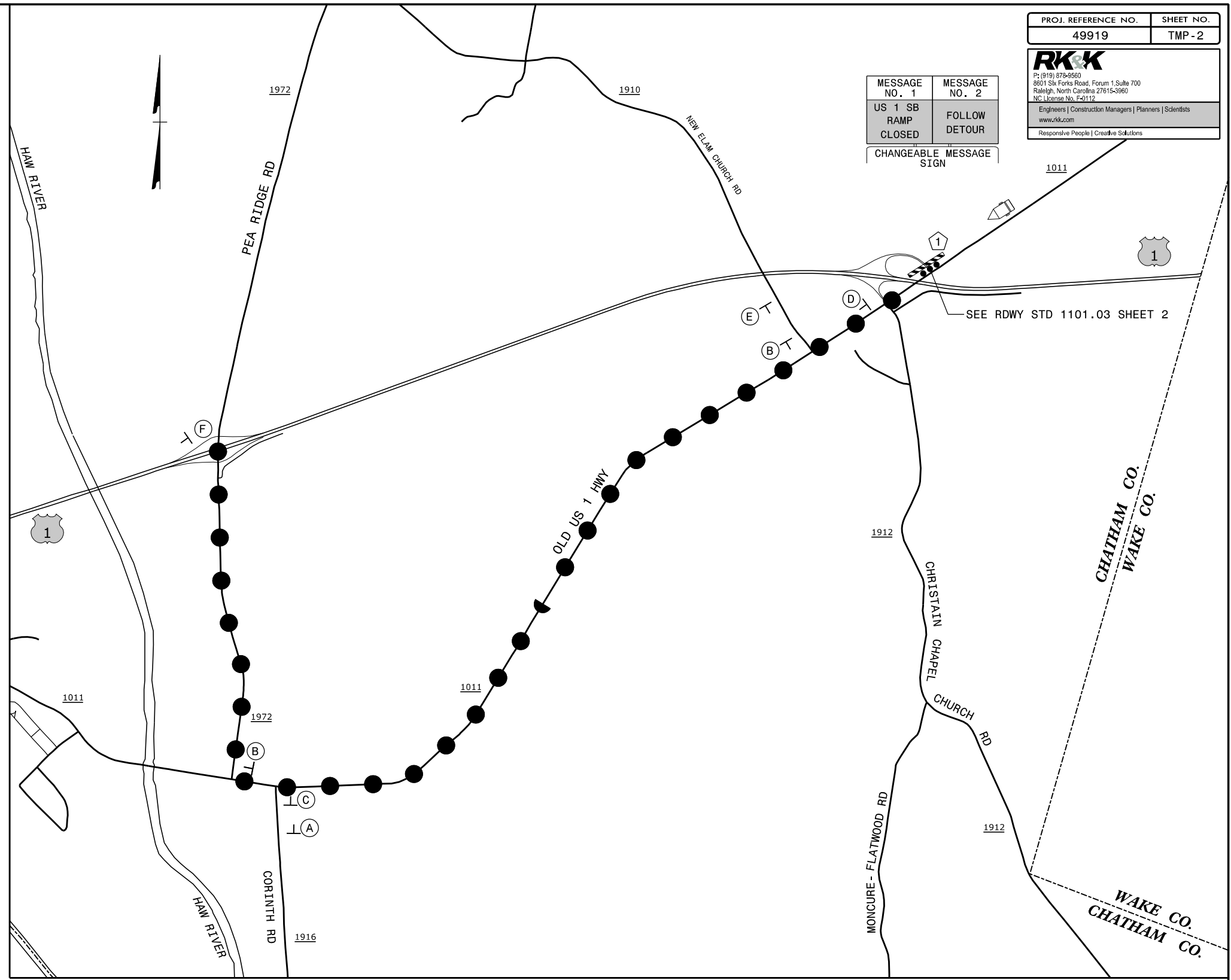
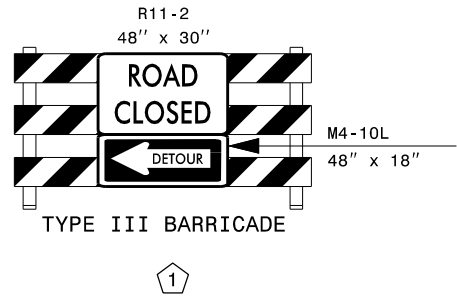
### MAPS LESS THAN 2 MILES

FOR RESURFACING MAPS WITH CONSTRUCTION LIMITS LESS THAN 2 MILES IN LENGTH, NO STATIONARY SIGNS ARE REQUIRED. USE PORTABLE "ROAD UNDER CONSTRUCTION" OR "ROAD WORK AHEAD" SIGNS IN LIEU OF STATIONARY ADVANCE WARNINGS SIGNS.



**ADVANCE WARNING SIGNS FOR RURAL AND SUBURBAN 2-LANE ROADWAY RESURFACING**

MESSAGE NO. 1	MESSAGE NO. 2
US 1 SB RAMP CLOSED	FOLLOW DETOUR
CHANGEABLE MESSAGE SIGN	



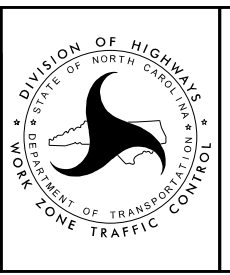
ROAD CLOSURE FOR US 1 SOUTHBOUND RAMP CAN NOT OCCUR CONCURRENTLY WITH OLD US 1 ROAD CLOSURE

- |              |  |              |  |              |  |              |  |              |  |              |  |
|--------------|--|--------------|--|--------------|--|--------------|--|--------------|--|--------------|--|
| <br><b>A</b> | M4-8<br>24" X 12"<br>M3-3<br>24" X 12"<br>M1-4<br>24" X 24"<br>M5-1<br>21" X 15" | <br><b>B</b> | M4-8<br>24" X 12"<br>M3-3<br>24" X 12"<br>M1-4<br>24" X 24"<br>M6-1<br>21" X 15" | <br><b>C</b> | M4-8<br>24" X 12"<br>M3-3<br>24" X 12"<br>M1-4<br>24" X 24"<br>M6-3<br>21" X 15" | <br><b>D</b> | M4-8<br>24" X 12"<br>M3-3<br>24" X 12"<br>M1-4<br>24" X 24"<br>M6-3<br>21" X 15" | <br><b>E</b> | M4-8<br>24" X 12"<br>M3-3<br>24" X 12"<br>M1-4<br>24" X 24"<br>M5-1<br>21" X 15" | <br><b>F</b> | M4-8A<br>24" X 18"<br>M3-3<br>24" X 12"<br>M1-4<br>24" X 24" |
|--------------|--|--------------|--|--------------|--|--------------|--|--------------|--|--------------|--|

APPROVED: \_\_\_\_\_  
 DATE: \_\_\_\_\_

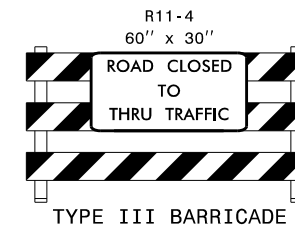
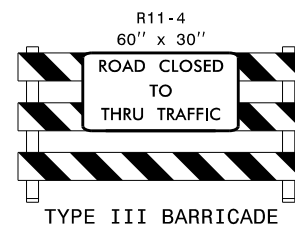
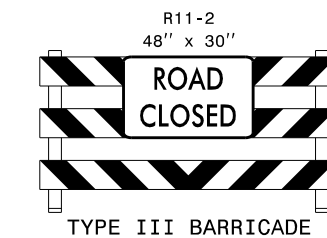
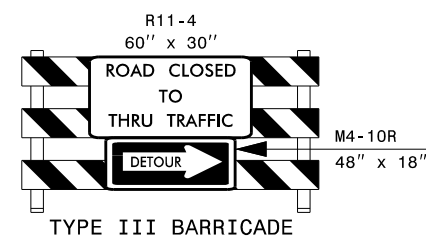
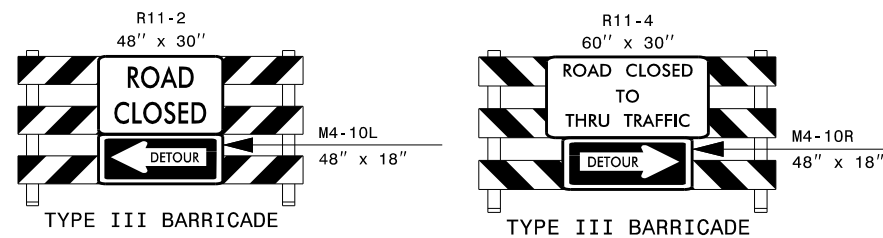
SEAL

**DOCUMENT NOT CONSIDERED FINAL  
 UNLESS ALL SIGNATURES COMPLETED**

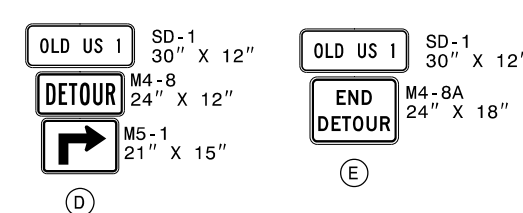
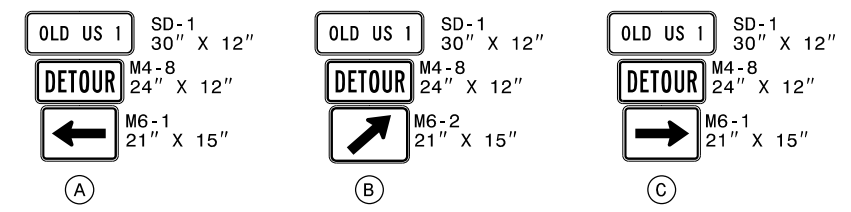
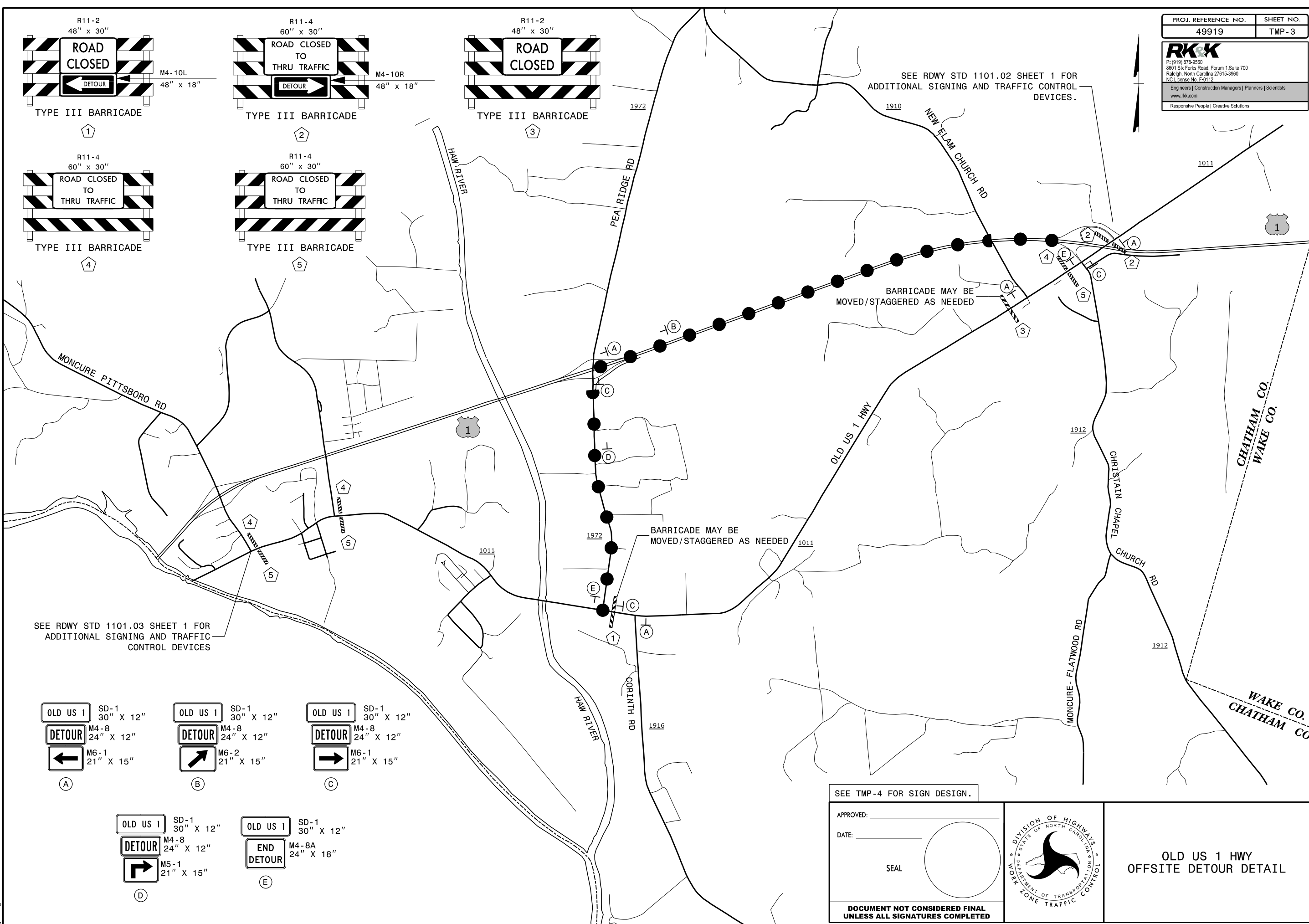


**US 1 SOUTH ON-RAMP  
 OFFSITE DETOUR DETAIL**

5/17/2022  
 R:\TrafficControl\TCP\BLUE\_TMP\_FSH02-RAMP.dgn  
 Joiner



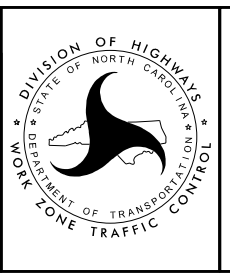
SEE RDWY STD 1101.02 SHEET 1 FOR ADDITIONAL SIGNING AND TRAFFIC CONTROL DEVICES.



SEE TMP-4 FOR SIGN DESIGN.

APPROVED: \_\_\_\_\_  
 DATE: \_\_\_\_\_  
 SEAL

DOCUMENT NOT CONSIDERED FINAL  
 UNLESS ALL SIGNATURES COMPLETED



OLD US 1 HWY  
 OFFSITE DETOUR DETAIL

SIGN NUMBER: SD-1	BACKG COLOR: Fluorescent Orange	DESIGN BY: A. TUTT	CHECKED BY: D. SEARS	May 12, 2022
TYPE: STATIONARY	COPY COLOR: Black	PROJECT ID: 49919	LOCATION: VARIES	DIV: 8
QUANTITY: SEE PLANS				

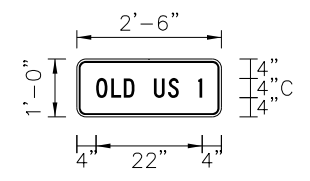
SYMBOL	X	Y	WID	HT

MAT'L: 0.080" (2.0 mm) ALUMINUM

NO. Z BARS:  
LENGTH:

USE NOTES: 1,2

- Legend and border shall be direct applied black non-reflective sheeting.
- Background shall be NC GRADE B fluorescent orange retroreflective sheeting.



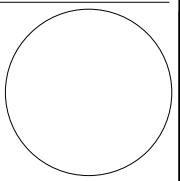
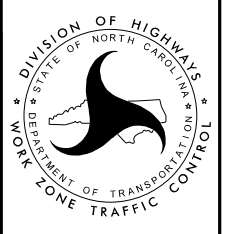
Spacing Factor is 1 unless specified otherwise

LETTER POSITIONS

Letter spacings are to start of next letter

	O	L	D		U	S	1														Series/Size
	4	3.2	2.6	2.2	4	2.9	2.2	4	0.8	4											C 2000
																					22

FILENAME: BLUE\_TMP\_PSH03 NORTH CAROLINA D.O.T. SIGN DETAIL

APPROVED: _____ DATE: _____  SEAL 		<h1>SIGN DESIGN</h1>
<b>DOCUMENT NOT CONSIDERED FINAL UNLESS ALL SIGNATURES COMPLETED</b>		