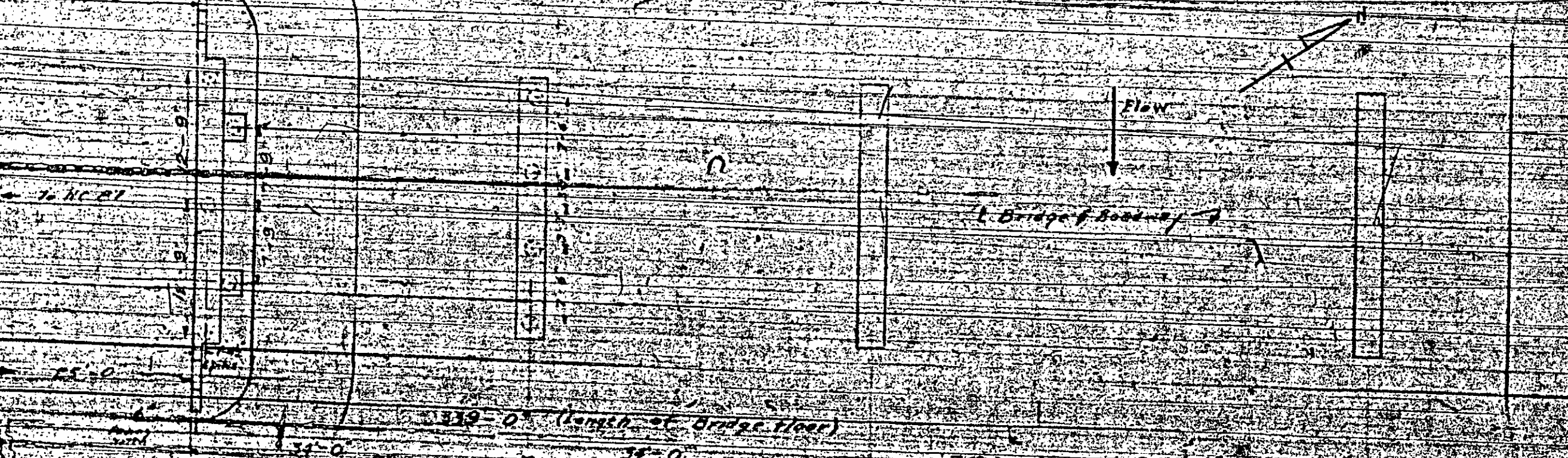
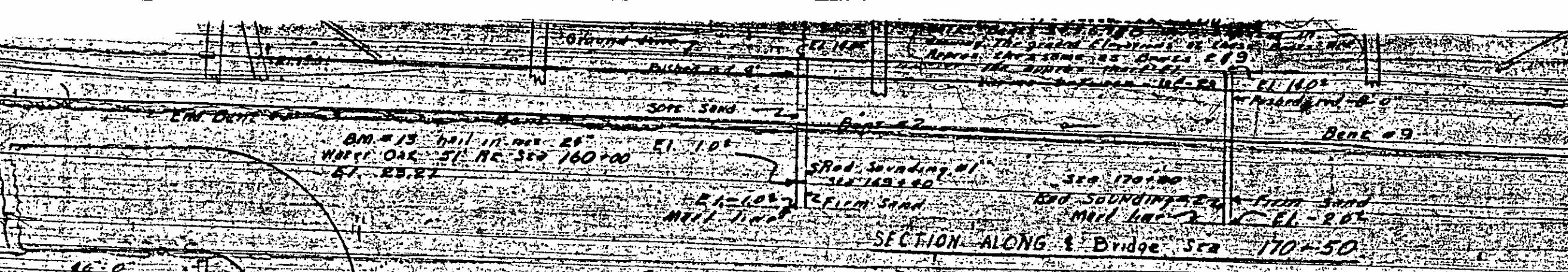


Nov-11-42-20

See 141-42-20 for

plans.

NEW # 080018



DESIGNED BY: [Signature]  
 DRAWN BY: [Signature]  
 CHECKED BY: [Signature]  
 DATE: [Date]  
 DATE: [Date]

PLAN

COPIED from BEG #18  
 S-LEE 3-23-00

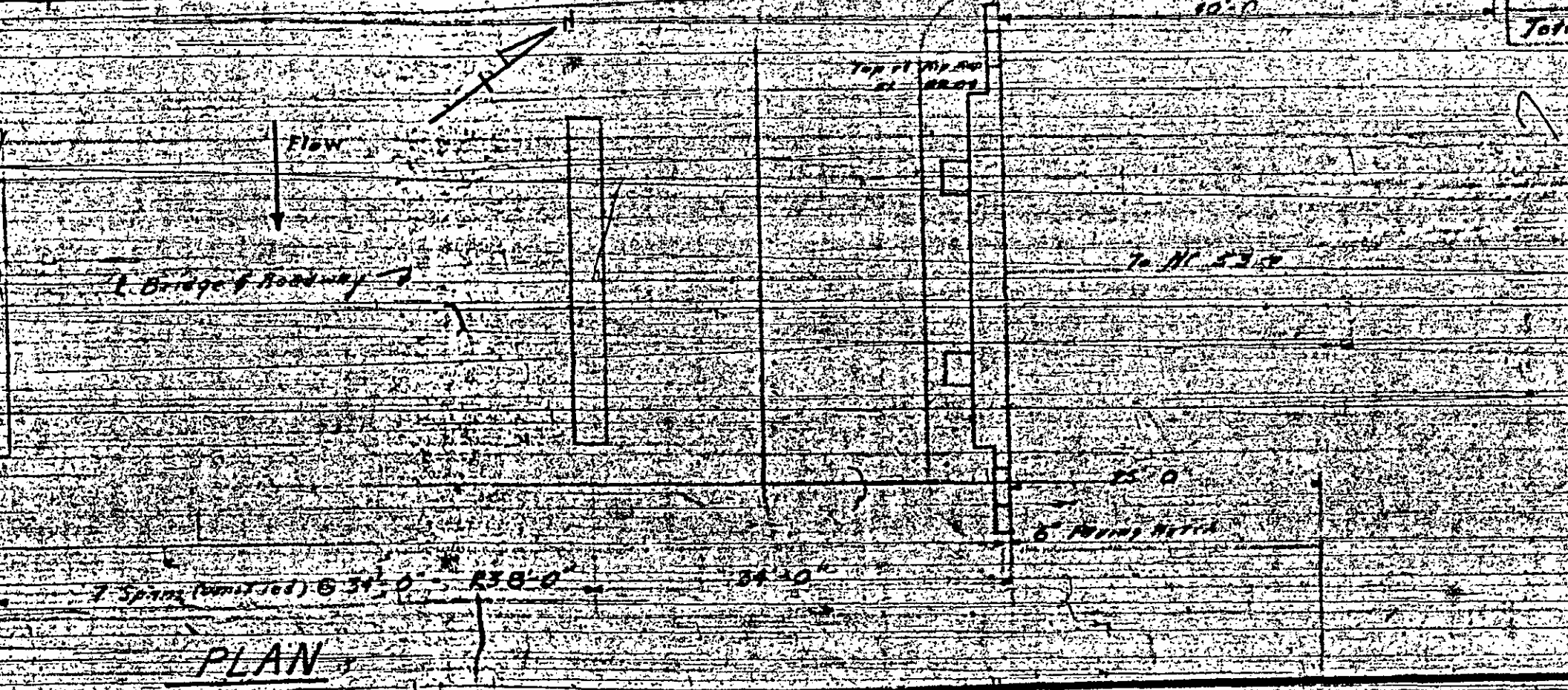
Approx. Cross-section of bridge  
 11-22  
 11-22

EL 140  
 End Bent #2  
 Bent #9

Superstructure	412.0	128.14	
End Bent	P.I. 2	405.2	10
9 Bent	66.8	15.512	36
10 Bent			
APX. CURB	5.7	99	
Total	437.2	161.587	0

11-22  
 11-22  
 11-22

CROSS SECTION ALONG & Bridge Sta 170+50



PROJECT NO  
 COLUMBUS-BLADEN

STATION: 102  
 112  
 170

STATE OF NORTH CAROLINA  
 STATE HIGHWAY  
 PUBLIC WORKS COMMISSION

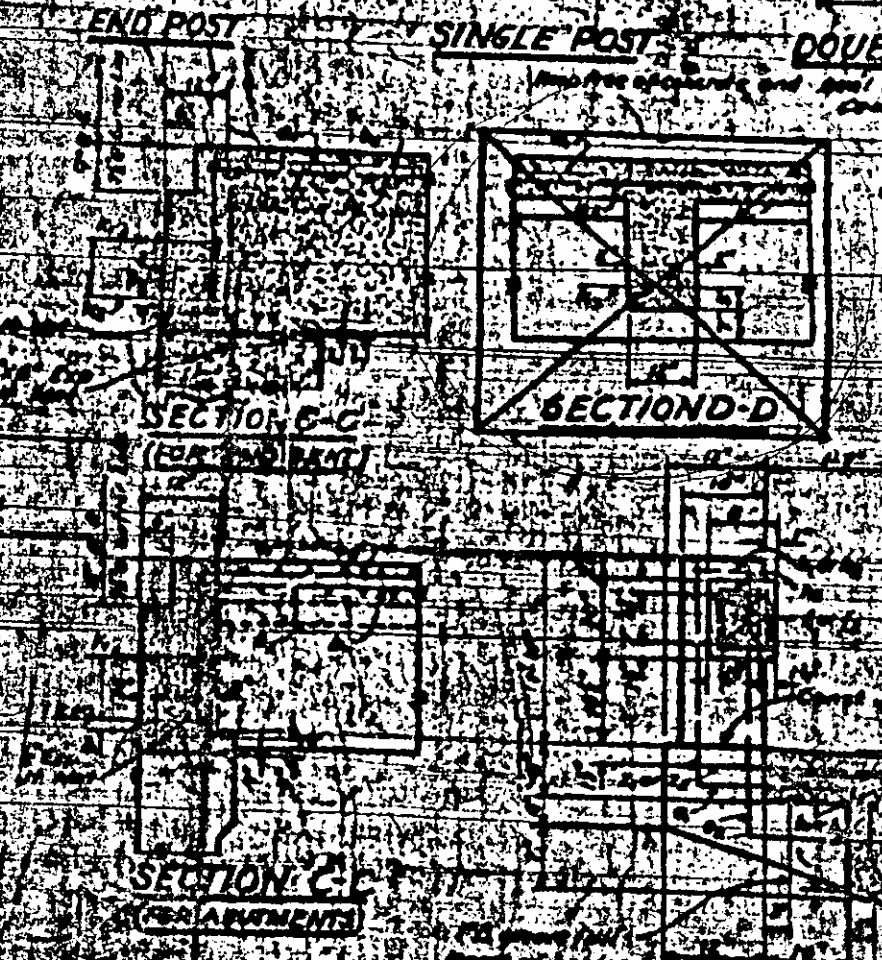
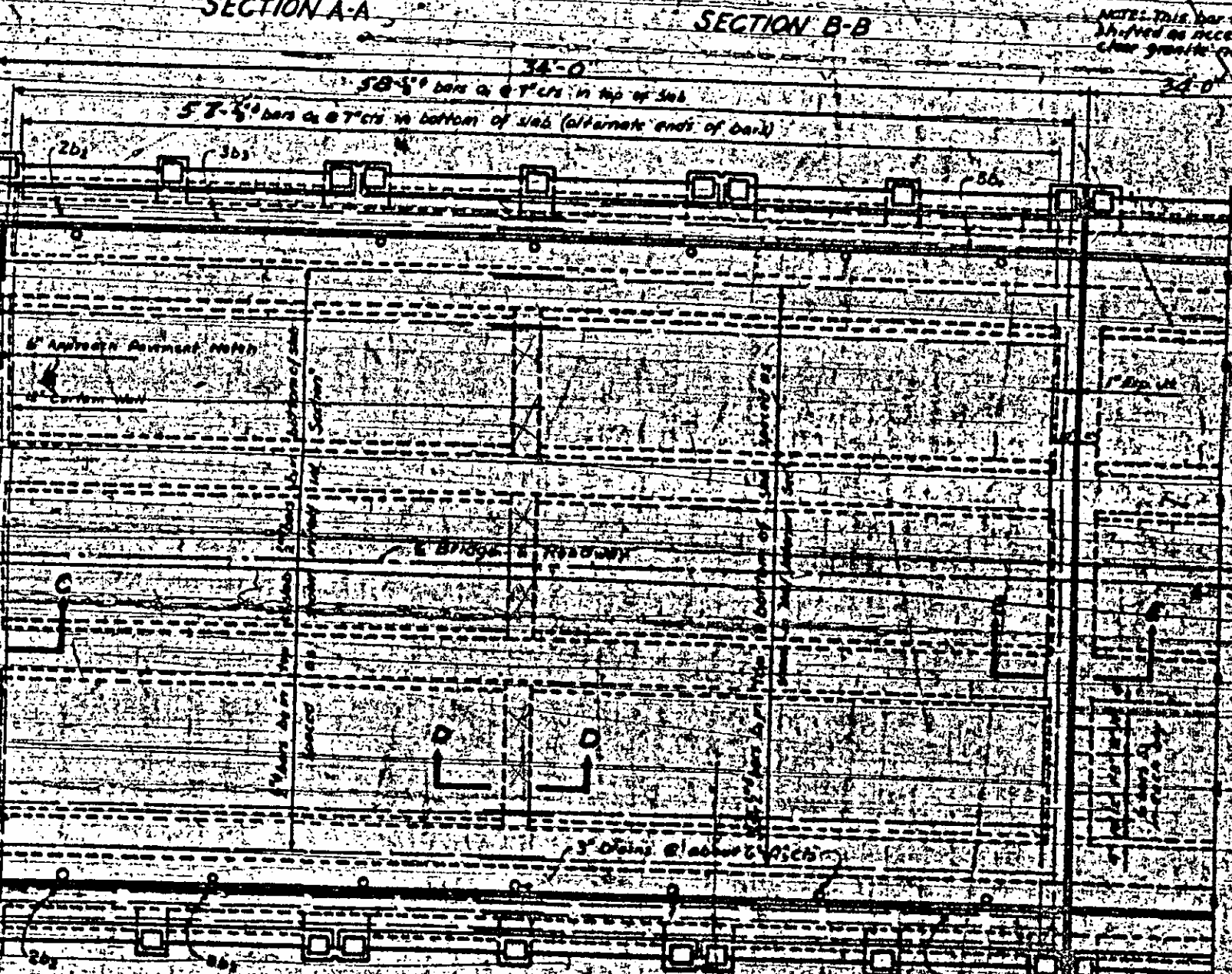
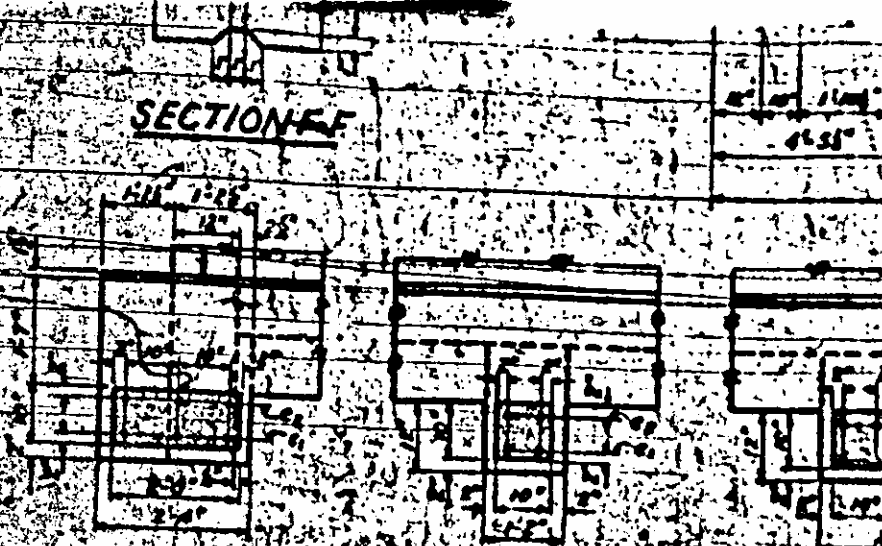
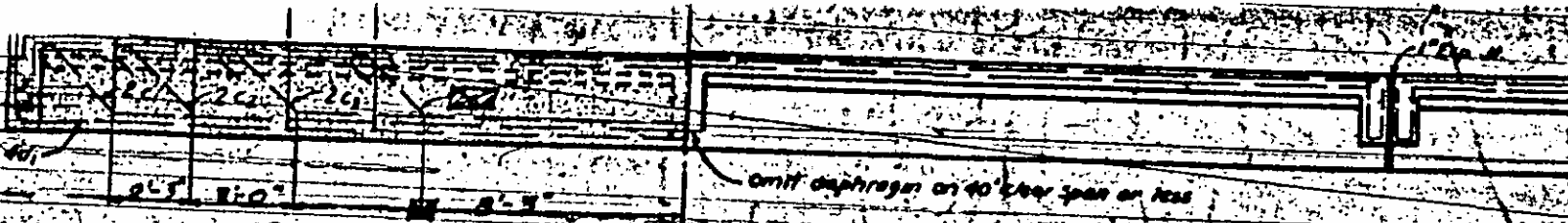
GENERAL DRAWING  
 CAPE FEAR  
 OVERFLOW

AUG 19

DESIGNED BY  
 APPROVED BY

PLAN





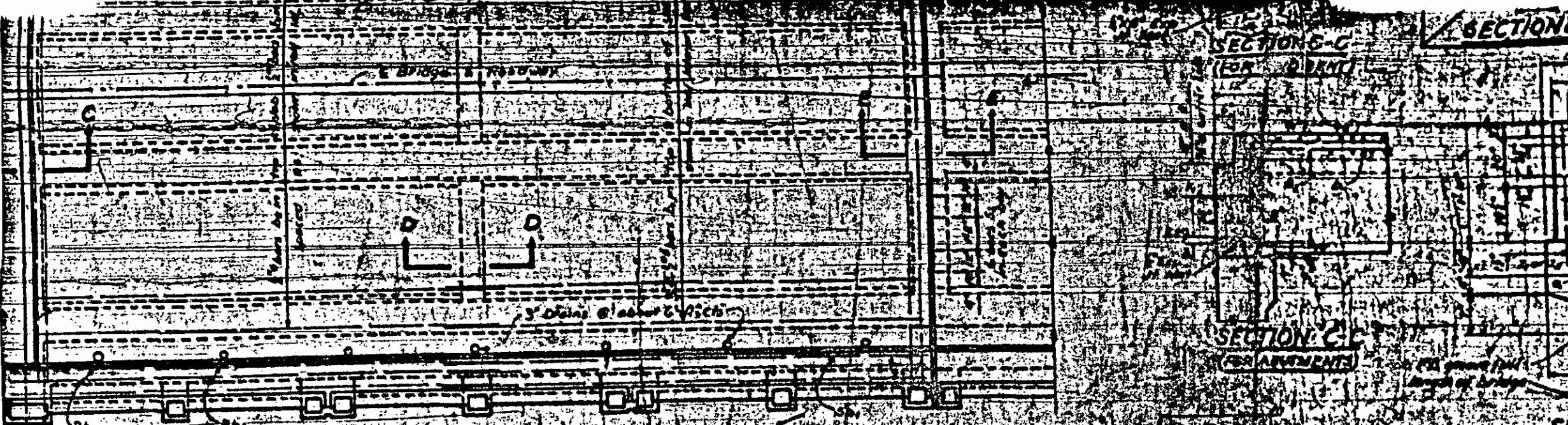
5" @ 7" CTS.

SECTION E-C SECTION

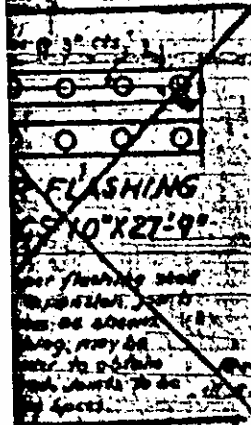
(FOR DETAILS)

SECTION G-C

(FOR DETAILS)



PLAN



FLASHING  
CS 10" X 27'-9"

For flashing see  
 specification  
 may be above  
 may be below  
 may be in place  
 may be in place  
 may be in place

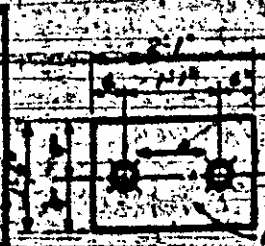


PLATE P  
4 REQUIRED

Refer to call for APSTANDARD II - CONCRETE  
 FOR DETAILS (SEE PLAN) BY MP-578

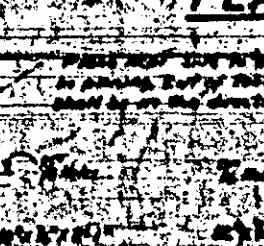


PLATE P  
78 REQUIRED



DRAIN  
DETAIL

4 REQUIRED



NO.	DESCRIPTION	DATE
1	...	...
2	...	...
3	...	...
4	...	...
5	...	...
6	...	...
7	...	...
8	...	...
9	...	...
10	...	...

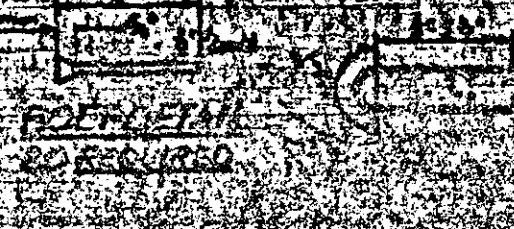
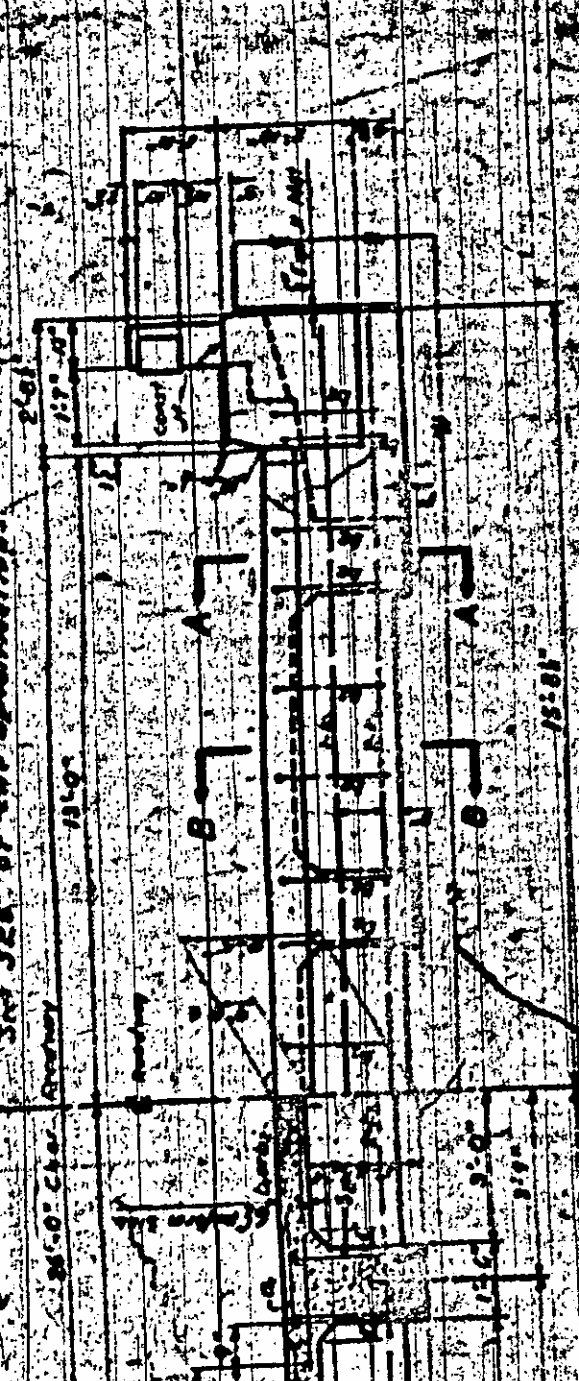


PLATE P  
20 REQUIRED



FOR SECTION

HALF END VIEW

DESIGN DATA

SPECIFICATIONS: A.A.S.N.O.  
 ASSUMED LIVE LOAD: 175-312  
 IMPACT ALLOWANCE: See Specifications  
 RAINFALLING OTHER IN BRIDGE: 16,000 lbs per span (16)  
 RAINFALLING OTHER IN TRUSS: 16,000 lbs per span (16)  
 REINFORCING OTHER IN CONCRETE: 1000 lbs per sq ft  
 SHEAR: CLASS A CONCRETE: 90 lbs per sq ft

SECTION E-E  
FOR GIRDER ON BRIDGE

GENERAL NOTE

**CONCRETE:** Class A concrete using the Standard  
 coarse aggregate and be used throughout.  
**CHAMBERS:** All exposed corners of concrete  
 shall be chamfered to a minimum of 1/4" on all  
 sides. The chamfer shall be made by using a  
 round in one operation, allowing no time for  
 set to take place between forms.  
**REINFORCING STEEL:** All reinforcing steel  
 to be furnished by the manufacturer.  
 The diameter of bars shall be as shown on the  
 drawings and the spacing of bars shall be as shown  
 on the drawings. The diameter of bars shall be as shown  
 on the drawings and the spacing of bars shall be as shown  
 on the drawings.

GIRDER DETAIL

BILL OF MATERIAL

BAR	SIZE	LENGTH	WEIGHT
1	5/8"	28'-7"	172.81
2	5/8"	28'-0"	167.36
3	1/2"	18'-0"	102.54
4	1/2"	19'-0"	114.87
5	1/2"	19'-0"	114.87
6	1/2"	19'-0"	114.87
7	1/2"	19'-0"	114.87
8	1/2"	19'-0"	114.87
9	1/2"	19'-0"	114.87
10	1/2"	19'-0"	114.87
11	1/2"	19'-0"	114.87
12	1/2"	19'-0"	114.87
13	1/2"	19'-0"	114.87
14	1/2"	19'-0"	114.87
15	1/2"	19'-0"	114.87
16	1/2"	19'-0"	114.87
17	1/2"	19'-0"	114.87
18	1/2"	19'-0"	114.87
19	1/2"	19'-0"	114.87
20	1/2"	19'-0"	114.87
21	1/2"	19'-0"	114.87
22	1/2"	19'-0"	114.87
23	1/2"	19'-0"	114.87
24	1/2"	19'-0"	114.87
25	1/2"	19'-0"	114.87
26	1/2"	19'-0"	114.87
27	1/2"	19'-0"	114.87
28	1/2"	19'-0"	114.87
29	1/2"	19'-0"	114.87
30	1/2"	19'-0"	114.87
31	1/2"	19'-0"	114.87
32	1/2"	19'-0"	114.87
33	1/2"	19'-0"	114.87
34	1/2"	19'-0"	114.87
35	1/2"	19'-0"	114.87
36	1/2"	19'-0"	114.87
37	1/2"	19'-0"	114.87
38	1/2"	19'-0"	114.87
39	1/2"	19'-0"	114.87
40	1/2"	19'-0"	114.87
41	1/2"	19'-0"	114.87
42	1/2"	19'-0"	114.87
43	1/2"	19'-0"	114.87
44	1/2"	19'-0"	114.87
45	1/2"	19'-0"	114.87
46	1/2"	19'-0"	114.87
47	1/2"	19'-0"	114.87
48	1/2"	19'-0"	114.87
49	1/2"	19'-0"	114.87
50	1/2"	19'-0"	114.87
51	1/2"	19'-0"	114.87
52	1/2"	19'-0"	114.87
53	1/2"	19'-0"	114.87
54	1/2"	19'-0"	114.87
55	1/2"	19'-0"	114.87
56	1/2"	19'-0"	114.87
57	1/2"	19'-0"	114.87
58	1/2"	19'-0"	114.87
59	1/2"	19'-0"	114.87
60	1/2"	19'-0"	114.87
61	1/2"	19'-0"	114.87
62	1/2"	19'-0"	114.87
63	1/2"	19'-0"	114.87
64	1/2"	19'-0"	114.87
65	1/2"	19'-0"	114.87
66	1/2"	19'-0"	114.87
67	1/2"	19'-0"	114.87
68	1/2"	19'-0"	114.87
69	1/2"	19'-0"	114.87
70	1/2"	19'-0"	114.87
71	1/2"	19'-0"	114.87
72	1/2"	19'-0"	114.87
73	1/2"	19'-0"	114.87
74	1/2"	19'-0"	114.87
75	1/2"	19'-0"	114.87
76	1/2"	19'-0"	114.87
77	1/2"	19'-0"	114.87
78	1/2"	19'-0"	114.87
79	1/2"	19'-0"	114.87
80	1/2"	19'-0"	114.87
81	1/2"	19'-0"	114.87
82	1/2"	19'-0"	114.87
83	1/2"	19'-0"	114.87
84	1/2"	19'-0"	114.87
85	1/2"	19'-0"	114.87
86	1/2"	19'-0"	114.87
87	1/2"	19'-0"	114.87
88	1/2"	19'-0"	114.87
89	1/2"	19'-0"	114.87
90	1/2"	19'-0"	114.87
91	1/2"	19'-0"	114.87
92	1/2"	19'-0"	114.87
93	1/2"	19'-0"	114.87
94	1/2"	19'-0"	114.87
95	1/2"	19'-0"	114.87
96	1/2"	19'-0"	114.87
97	1/2"	19'-0"	114.87
98	1/2"	19'-0"	114.87
99	1/2"	19'-0"	114.87
100	1/2"	19'-0"	114.87

EXPANSION JOINT MATERIAL

The expansion joint material shall be of the  
 type known as "Neoprene" and shall be furnished  
 by the manufacturer. The material shall be  
 of the type known as "Neoprene" and shall be  
 furnished by the manufacturer.

NAME PLATES

The name plates shall be of the type known as  
 "Aluminum" and shall be furnished by the  
 manufacturer. The name plates shall be of the  
 type known as "Aluminum" and shall be  
 furnished by the manufacturer.

MATERIAL AND WORKMANSHIP

The material and workmanship shall be in  
 accordance with the specifications for  
 the State Highway Department. The material  
 and workmanship shall be in accordance with  
 the specifications for the State Highway  
 Department.

PROJECT NO. 5-21  
 STATION 1021+00  
 112+00  
 170+00

STATE OF NORTH CAROLINA  
 STATE HIGHWAY DEPARTMENT  
 PUBLIC WORKS COMMISSION  
 COLUMBUS - BLADEN - COUN  
 REINFORCED CON  
 DECK GIRDER  
 SPAN 19'-0"  
 STANBARD