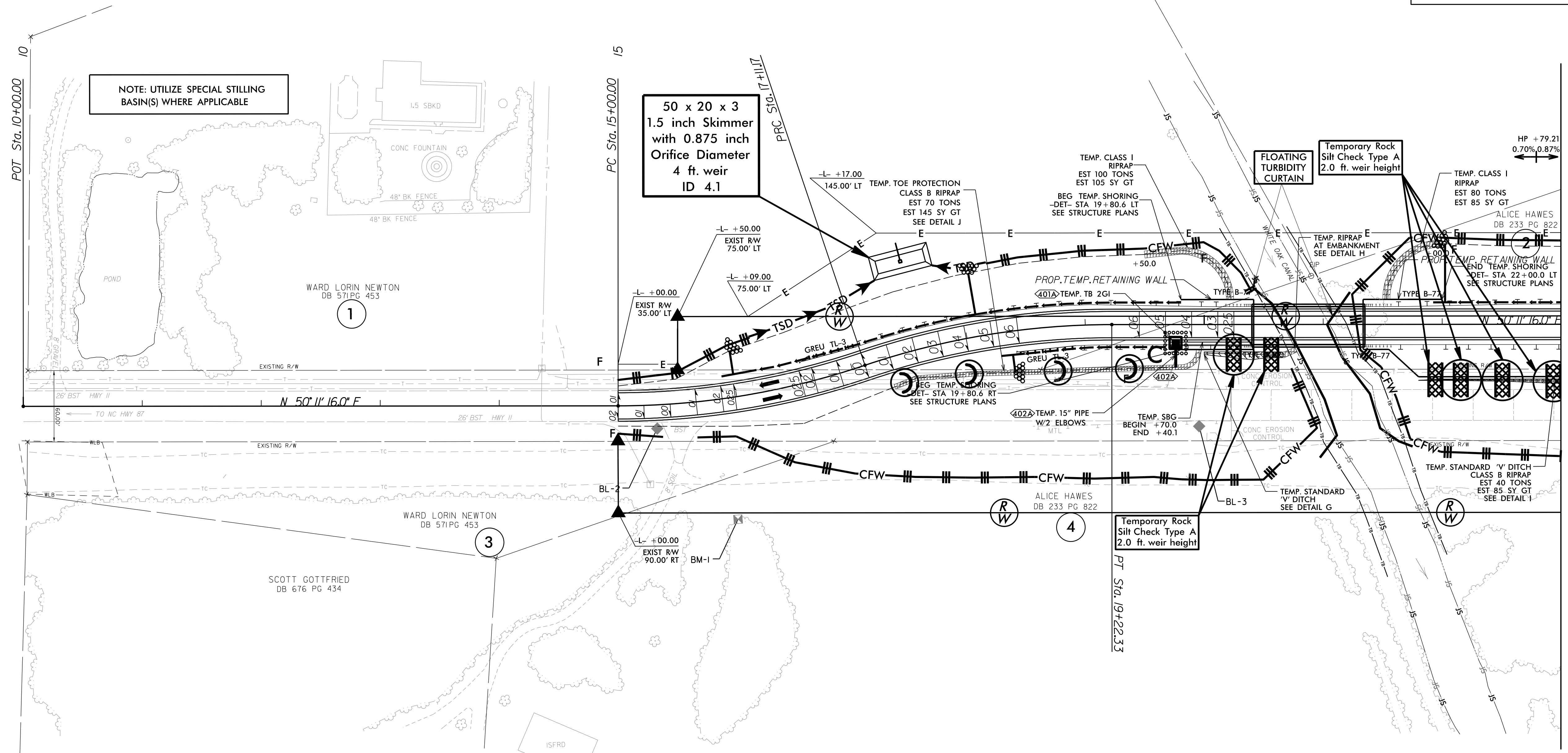
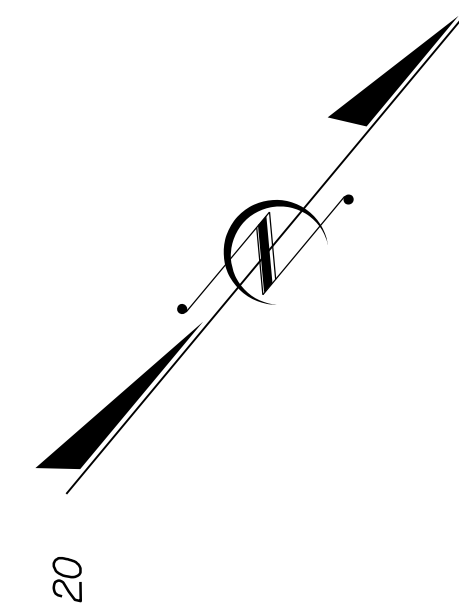


-DET-

PI Sta 16+06.52 Δ = 18° 36' 49.2" (LT) D = 8' 48' 53.0" L = 211.7' T = 106.52' R = 650.00'	PI Sta 18+17.69 Δ = 18° 36' 49.2" (RT) D = 8' 48' 53.0" L = 211.7' T = 106.52' R = 650.00'	PI Sta 27+18.97 Δ = 18° 36' 49.2" (RT) D = 8' 48' 53.0" L = 211.7' T = 106.52' R = 650.00'	PI Sta 29+30.14 Δ = 18° 36' 49.2" (LT) D = 8' 48' 53.0" L = 211.7' T = 106.52' R = 650.00'
---	---	---	---

# DETOUR



NOTE: UTILIZE SPECIAL STILLING BASIN(S) WHERE APPLICABLE

50 x 20 x 3  
1.5 inch Skimmer  
with 0.875 inch  
Orifice Diameter  
4 ft. weir  
ID 4.1

MATCH LINE STA. 23+00.00 - SEE SHEET EC-9

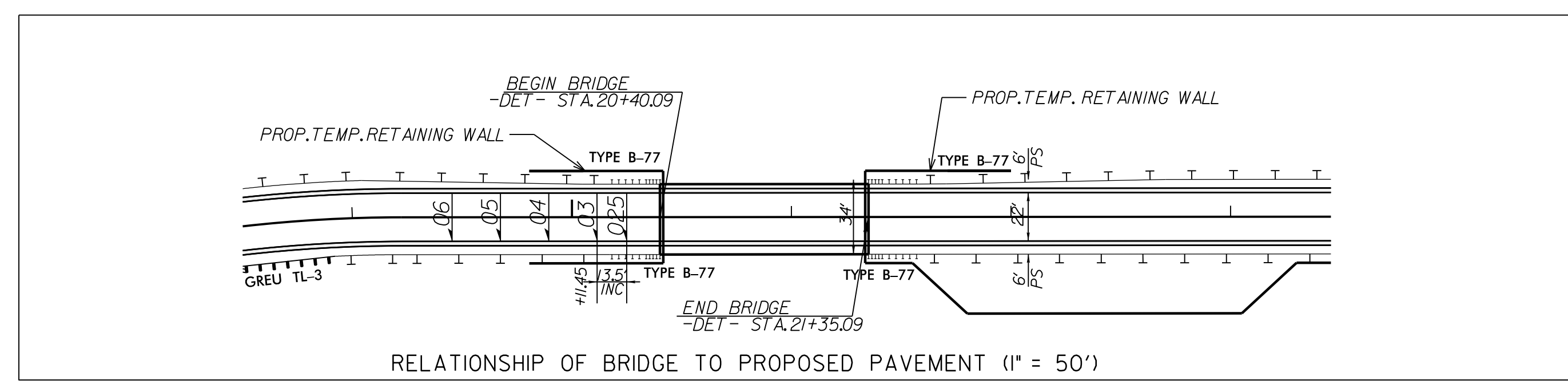
REVISIONS

Temp. Standard 'V' Ditch - RT Side  
Sta. = -DET- 19+76.1 to 20+67.3  
Q = 2.3 cfs  
V = 2.7-4.5 f/s  
d = 0.5-0.7 ft  
s = 0.0416-0.1691 f/ft  
n = 0.05  
Liner = Class I Riprap or Similar  
Required Shear Stress = 5.3 lbs/ft

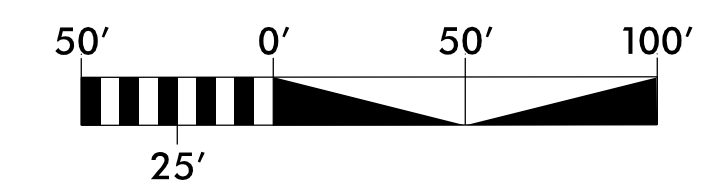
Temp. Standard 'V' Ditch - LT Side  
Sta. = -DET- 21+80.1 to 24+15.0  
Q = 4.8 cfs  
V = 1.2-4.1 f/s  
d = 0.8-1.4 ft  
s = 0.003-0.0820 f/ft  
n = 0.05  
Liner = Class I Riprap or Similar  
Required Shear Stress = 3.9 lbs/ft

0401A TEMPORARY TB 2GI  
@ -DET- STA 19+76.1 RT  
DA = 0.15 ac  
C = 0.90  
l = 4.0 in/hr  
Spread = 3.5 ft  
Shoulder = 6.0 ft  
Rdwy Grade = 0.007 f/ft  
Cross Slope = 0.046 f/ft  
Rim = 25.9 ft  
Invert = 22.8 ft

0402A  
Temporary 15" Pipe  
US = 0401A  
US Invert = 22.8 ft  
DS = 0402A  
DS Invert = 18.9 ft  
L = 19.0 ft  
n = 0.024  
s = 19.4%  
Q10 = 0.9 cfs  
V10 = 6.8 f/s



FOR -DET- PROFILE SEE SHEET 9  
FOR -L- SEE SHEET 4/5



6/7/2018 2:51:01 PM B:\5694\Roadside\CADD\PSH\B-5694\_reu\_EC08.dgn