
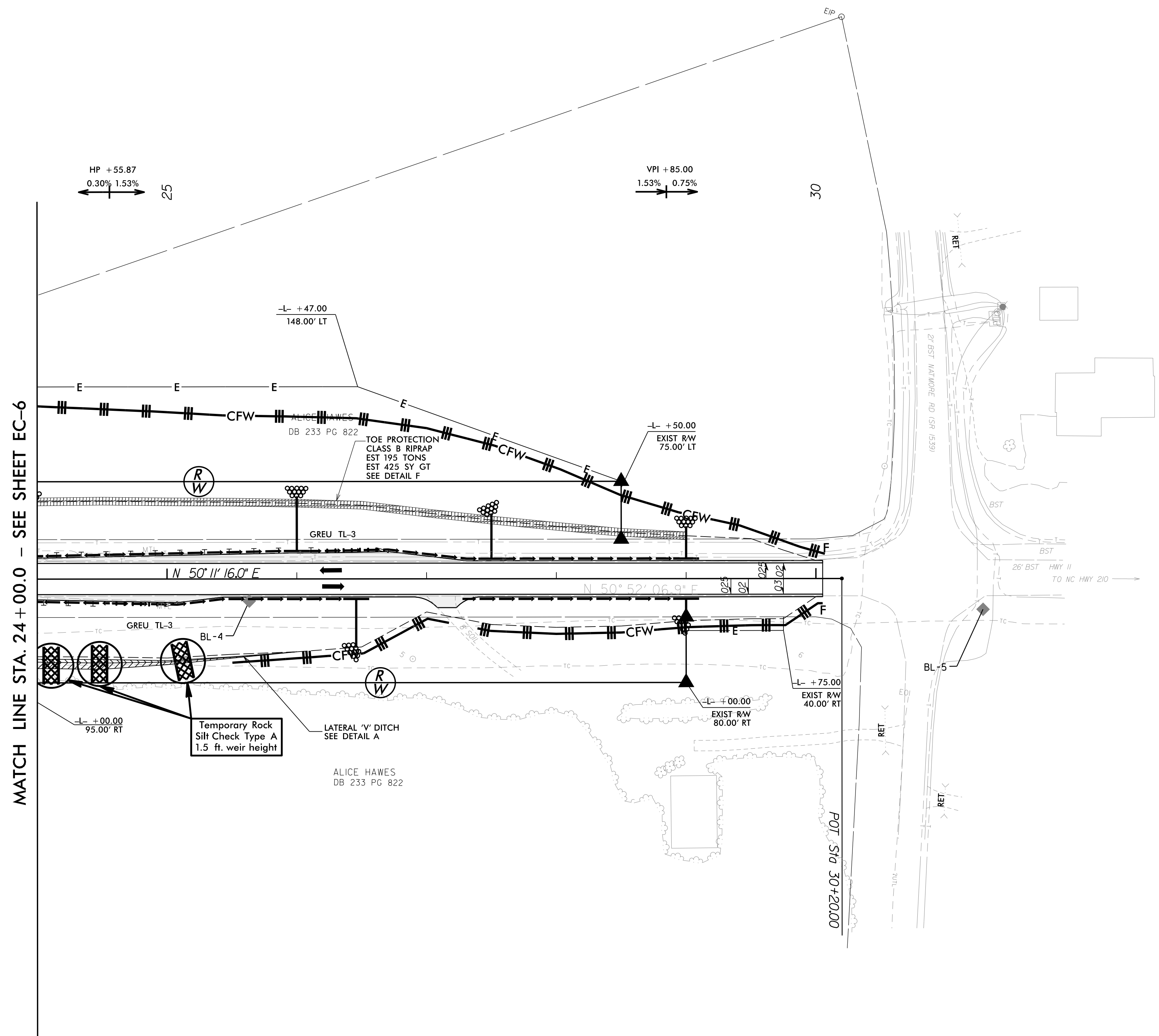
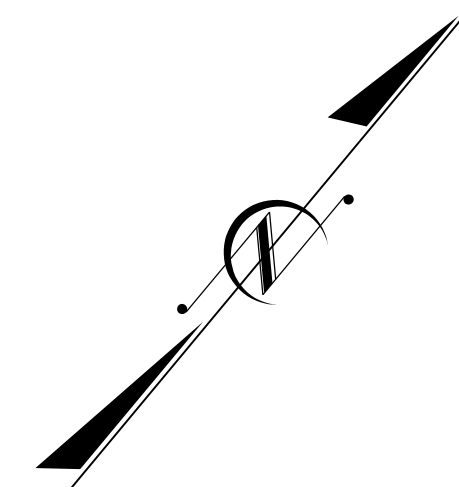


PROJECT REFERENCE NO.	SHEET NO.
B-5694	EC-7/CONST.5
RW SHEET NO.	5
ROADWAY DESIGN ENGINEER	HYDRAULICS ENGINEER
 KCI Engineers • Planners • Scientists • Construction Managers 4505 Falls of Neuse Road, Suite 400 Raleigh, NC 27609 Phone (919) 783-9214 • Fax (919) 783-9266	



REVISIONS
 6/7/2018 8:25:18 AM 251801945.12 B-5694 \Roadside\CADD\PSH\B-5694_reu_EC07.dgn
 Sawyer-Walters

Standard 'V' Ditch - RT Side
 Sta. = -L- 23+72.0 to 24+50.0
 Q = 2.3 cfs
 V = 1.3 f/s
 d = 0.8 ft
 s = 0.0031 f/ft
 n = 0.035

Lateral 'V' Ditch - RT Side
 Sta. = -L- 24+50.0 to 26+00.0
 Q = 2.3 cfs
 V = 1.9 f/s
 d = 0.6 ft
 s = 0.0100 f/ft
 n = 0.035

FOR -L- PROFILE SEE SHEET 8
 FOR DETOUR SEE SHEET 6/7

