

5/28/24

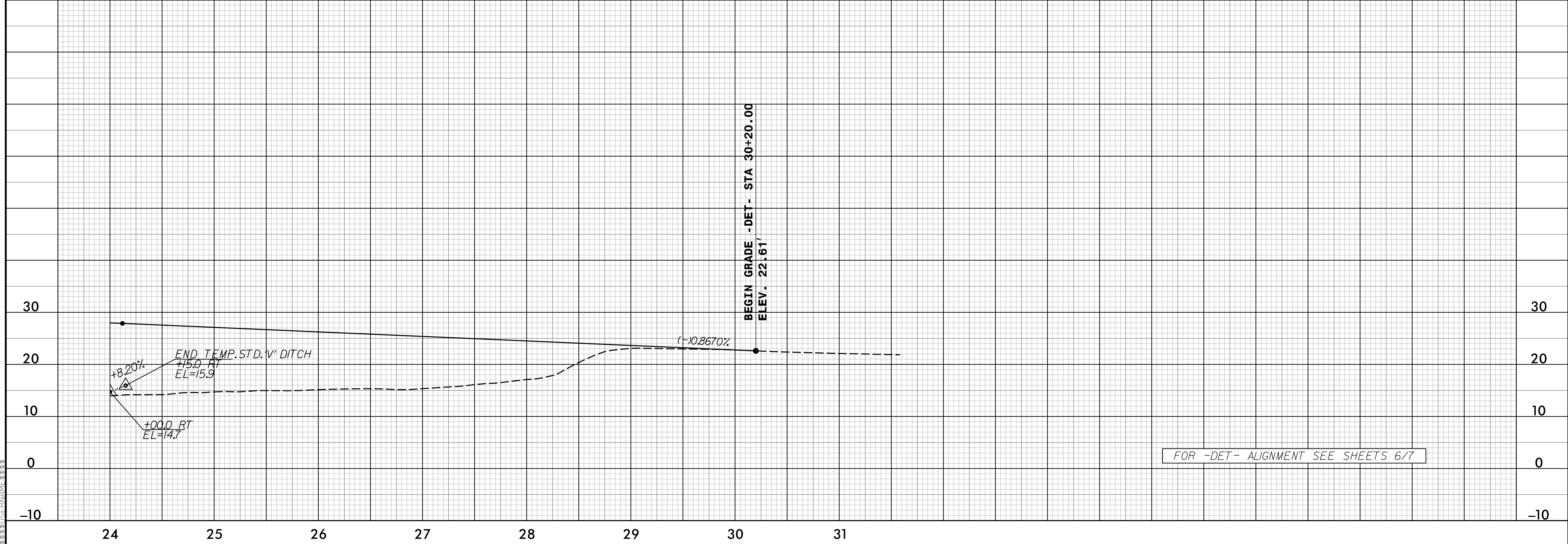
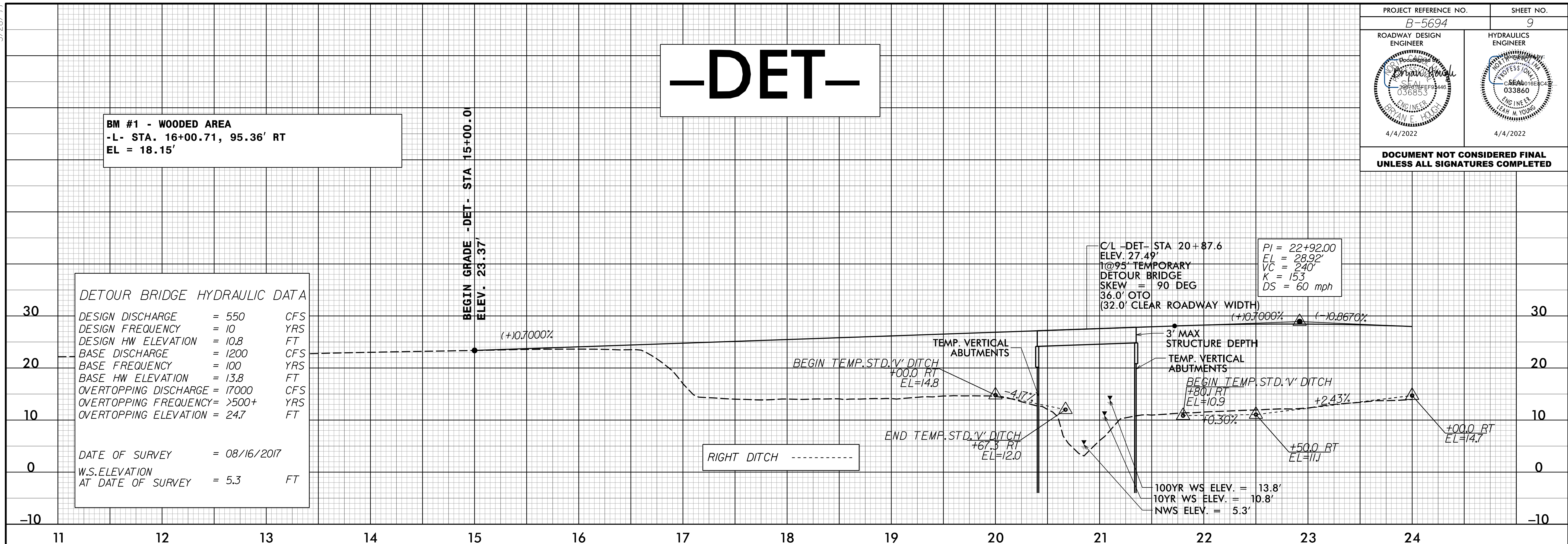
PROJECT REFERENCE NO. B-5694	SHEET NO. 9
ROADWAY DESIGN ENGINEER <i>[Signature]</i>	HYDRAULICS ENGINEER <i>[Signature]</i>
4/4/2022	4/4/2022

DOCUMENT NOT CONSIDERED FINAL UNLESS ALL SIGNATURES COMPLETED

-DET-

BM #1 - WOODED AREA
 -L- STA. 16+00.71, 95.36' RT
 EL = 18.15'

DETOUR BRIDGE HYDRAULIC DATA		
DESIGN DISCHARGE	= 550	CFS
DESIGN FREQUENCY	= 10	YRS
DESIGN HW ELEVATION	= 10.8	FT
BASE DISCHARGE	= 1200	CFS
BASE FREQUENCY	= 100	YRS
BASE HW ELEVATION	= 13.8	FT
OVERTOPPING DISCHARGE	= 17000	CFS
OVERTOPPING FREQUENCY	= >500+	YRS
OVERTOPPING ELEVATION	= 24.7	FT
DATE OF SURVEY	= 08/16/2017	
W.S. ELEVATION AT DATE OF SURVEY	= 5.3	FT



D:\FEB-2022\1407... B-5694\Roadway\Proj\B-5694_Rdy_det-.pl_psh.dgn