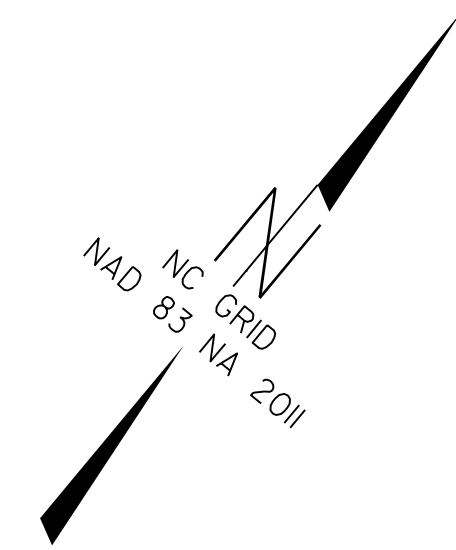


8/17/99

-DET-

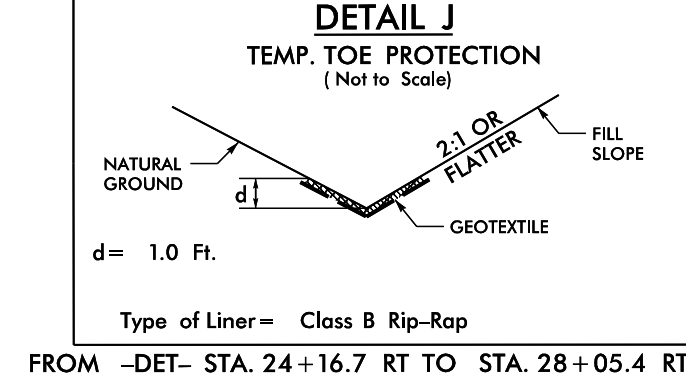
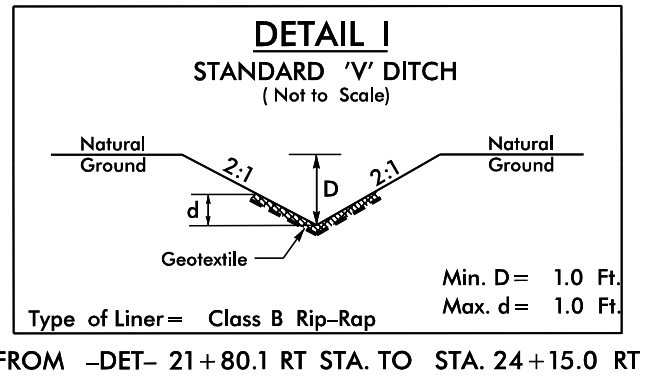
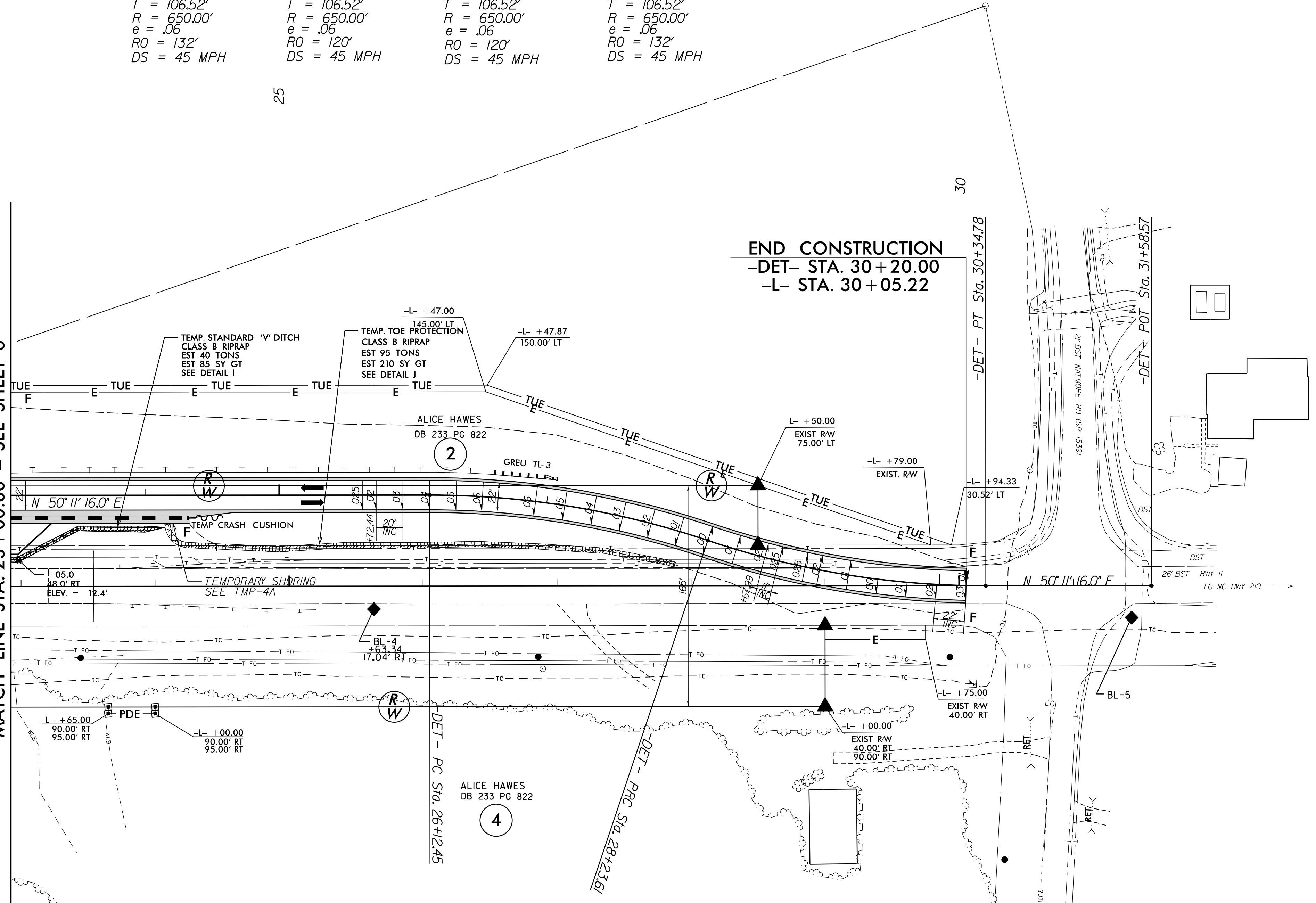
PI Sta 16+06.52 Δ = 18° 36' 49.2" (LT) D = 8' 48' 53.0" L = 211.7' T = 106.52' R = 650.00' e = .06 RO = 132' DS = 45 MPH	PI Sta 18+17.69 Δ = 18° 36' 49.2" (RT) D = 8' 48' 53.0" L = 211.7' T = 106.52' R = 650.00' e = .06 RO = 120' DS = 45 MPH	PI Sta 27+18.97 Δ = 18° 36' 49.2" (RT) D = 8' 48' 53.0" L = 211.7' T = 106.52' R = 650.00' e = .06 RO = 120' DS = 45 MPH	PI Sta 29+30.14 Δ = 18° 36' 49.2" (LT) D = 8' 48' 53.0" L = 211.7' T = 106.52' R = 650.00' e = .06 RO = 132' DS = 45 MPH
--	--	--	--



PROJECT REFERENCE NO. B-5694	SHEET NO. 7
ROADWAY DESIGN ENGINEER BRYAN E. HODGINS Professional Engineer No. 036853 4/4/2022	HYDRAULICS ENGINEER Professional Engineer No. 033860 4/4/2022
<b>DOCUMENT NOT CONSIDERED FINAL UNLESS ALL SIGNATURES COMPLETED</b>	
 <small>Engineers • Planners • Scientists • Construction Managers 4505 Falls of Neuse Road, Suite 400 Raleigh, NC 27609 Phone (919) 783-9214 • Fax (919) 783-9266</small>	

MATCH LINE STA. 23+00.00 - SEE SHEET 6

END CONSTRUCTION  
-DET- STA. 30+20.00  
-L- STA. 30+05.22



REVISIONS

23-MAR-2022 13:17  
M:\2018\1801945\12 B-5694\Roadway\Proj\B-5694\_Rdy\_det.psh,1.dgn  
BRYAN E. HODGINS

FOR -DET- PROFILE SEE SHEET 9  
FOR -L- SEE SHEETS 4/5