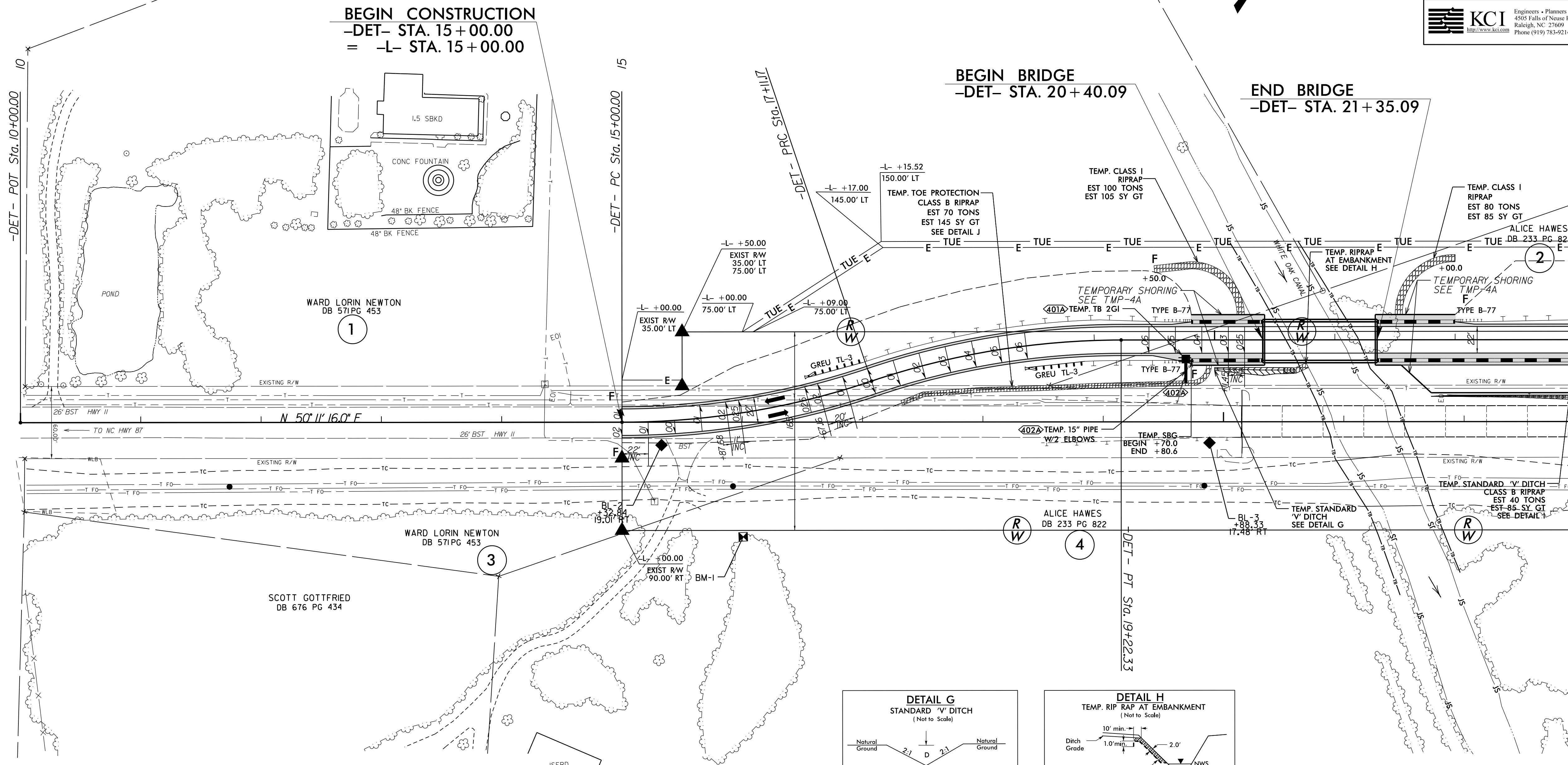
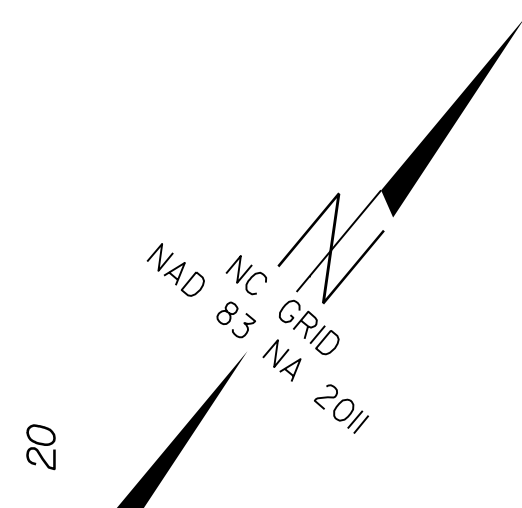


-DET-

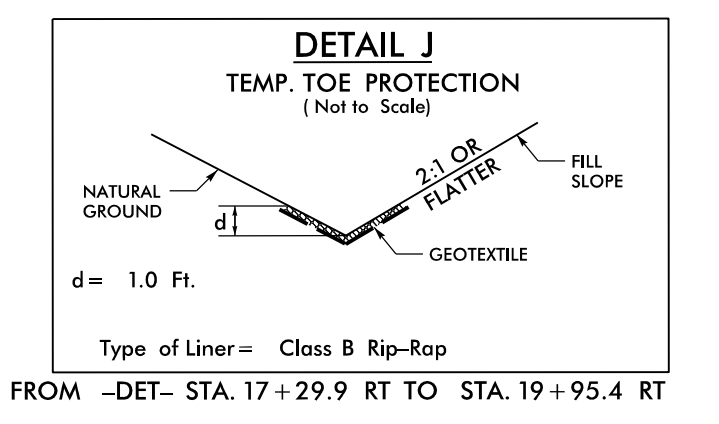
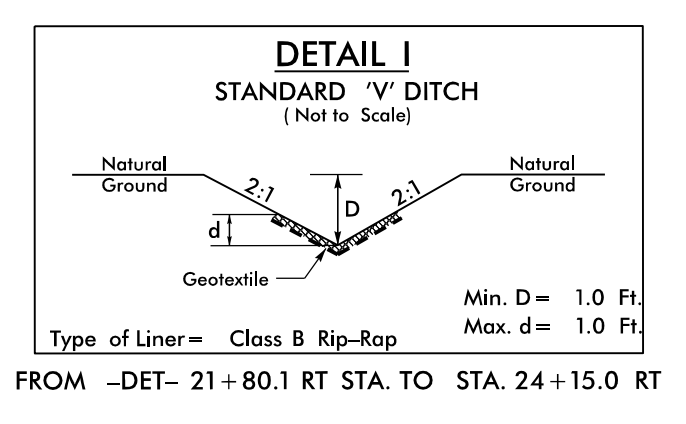
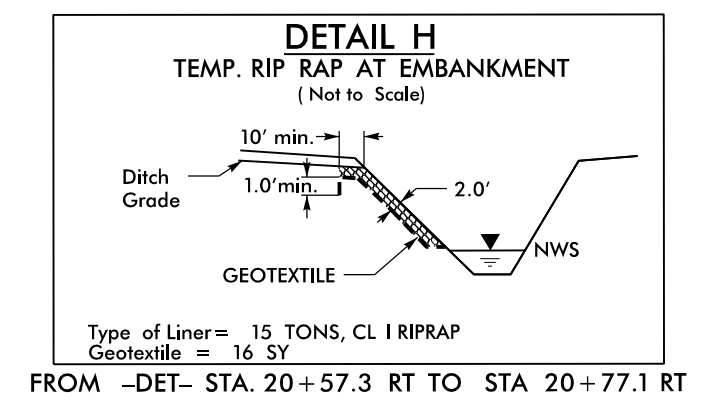
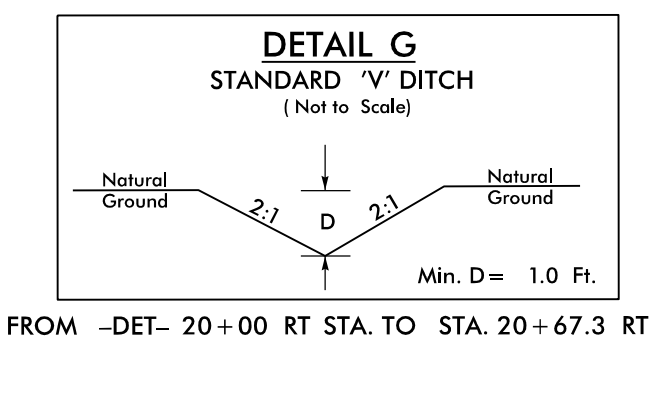
PI Sta 16+06.52 Δ = 18° 36' 49.2" (LT) D = 8' 48' 53.0" L = 211.7' T = 106.52' R = 650.00' e = .06 RO = 132' DS = 45 MPH	PI Sta 18+17.69 Δ = 18° 36' 49.2" (RT) D = 8' 48' 53.0" L = 211.7' T = 106.52' R = 650.00' e = .06 RO = 120' DS = 45 MPH	PI Sta 27+18.97 Δ = 18° 36' 49.2" (RT) D = 8' 48' 53.0" L = 211.7' T = 106.52' R = 650.00' e = .06 RO = 120' DS = 45 MPH	PI Sta 29+30.14 Δ = 18° 36' 49.2" (LT) D = 8' 48' 53.0" L = 211.7' T = 106.52' R = 650.00' e = .06 RO = 132' DS = 45 MPH
--	--	--	--

PROJECT REFERENCE NO. B-5694	SHEET NO. 6
R/W SHEET NO.	HYDRAULICS ENGINEER
ROADWAY DESIGN ENGINEER 	HYDRAULICS ENGINEER
DOCUMENT NOT CONSIDERED FINAL UNLESS ALL SIGNATURES COMPLETED	
KCI Engineers • Planners • Scientists • Construction Managers 4505 Falls of Neuse Road, Suite 400 Raleigh, NC 27609 Phone (919) 783-9214 • Fax (919) 783-9266	



REVISIONS

MATCH LINE STA. 23+00.00 - SEE SHEET 7



FOR -DET- PROFILE SEE SHEET 9
 FOR -L- SEE SHEETS 4/5
 FOR STRUCTURES SEE SHEETS S-1 TO S-37

11-MAY-2022 10:14
 M:\2018\21801945\12 B-5694\Roadway\Proj\B-5694_Rdy_det.psh.dgn
 20220511 10:14:55 AM